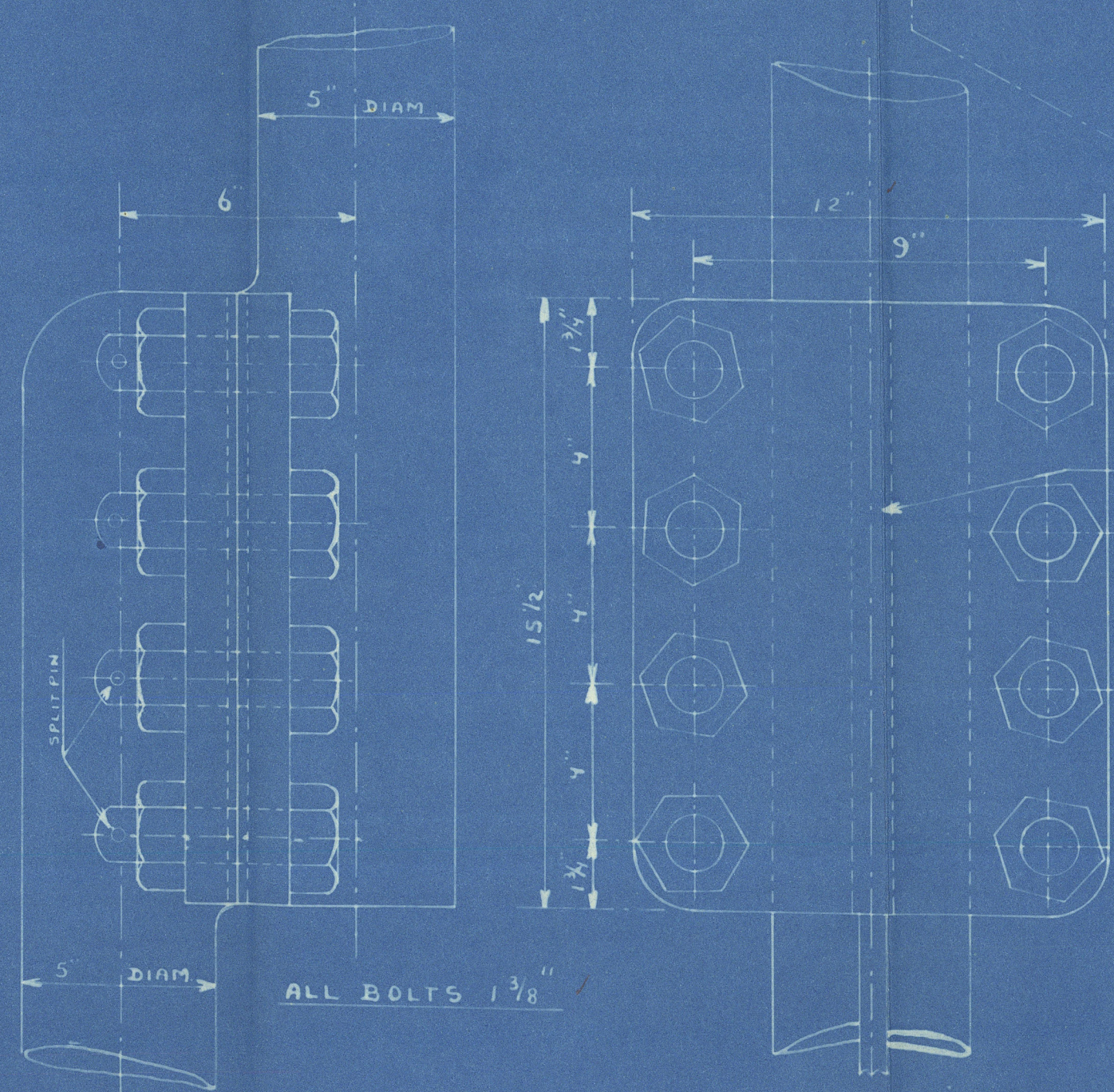


RUDDER.

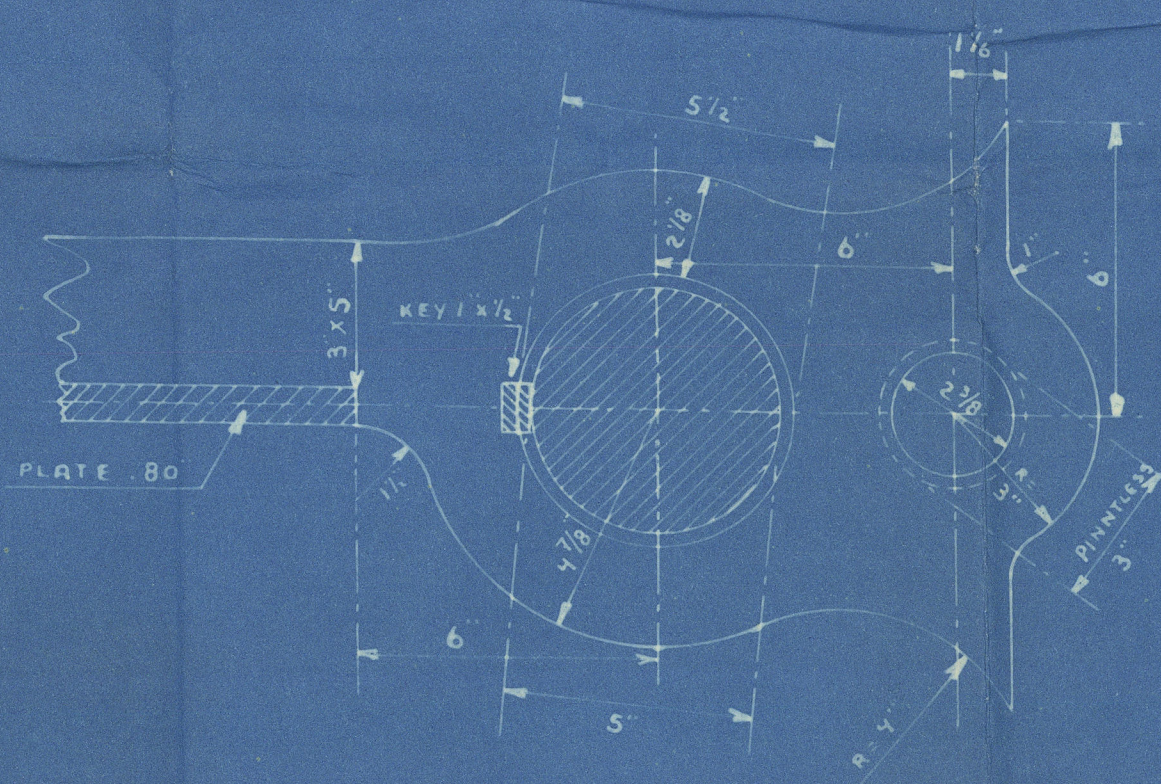
SPEED NOT EXCEEDING 10 KNOTS.

SCALE 1" = 3'-0".

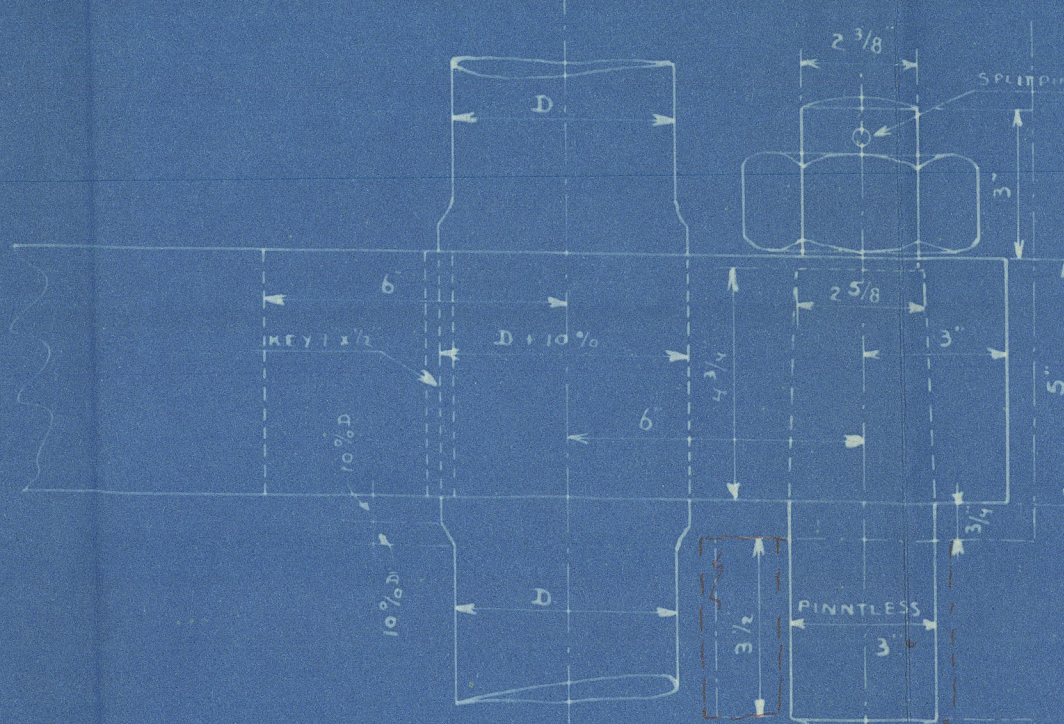
COUPLING OF RUDDERHEAD.



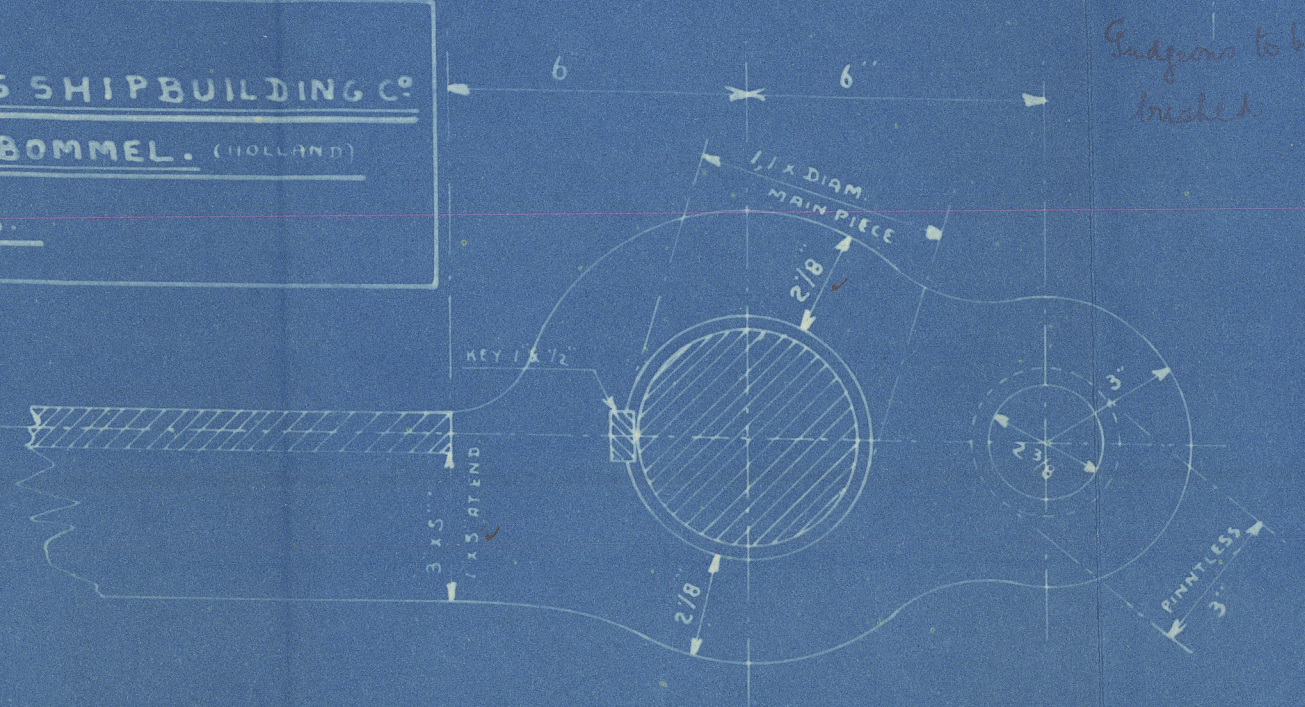
TOP ARM WITH STOPPER 42°



CONNECTION ARM AND MAIN PIECE.

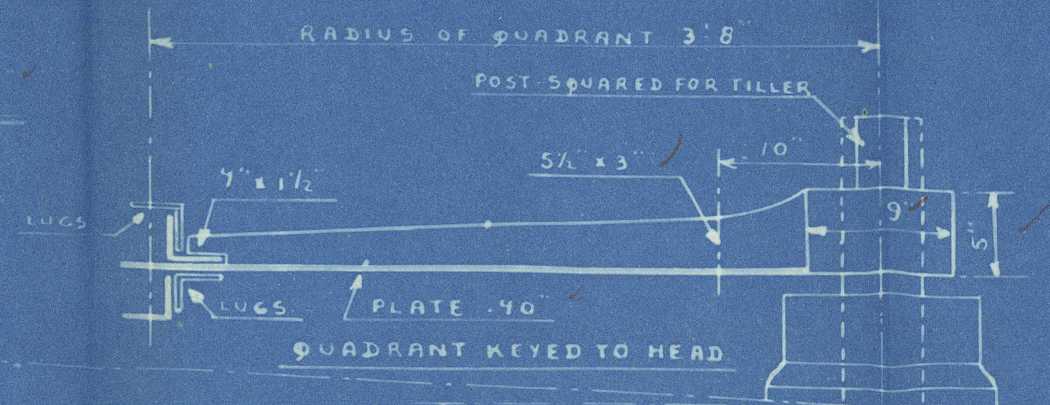


J. MEYERS SHIPBUILDING CO.
ZALT-BOMMEL, (HOLLAND)
OCT 8th 1925



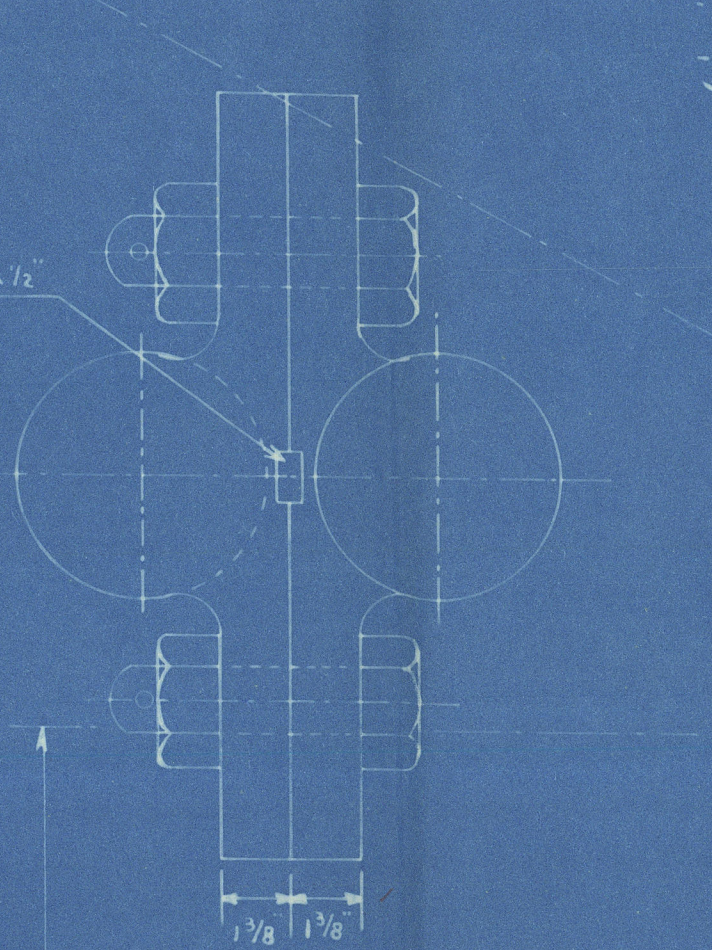
End piece to be built

STEERING CHAINS 3/8"
STEERING RODS 1 1/8" φ



RUDDERHEAD 5"

for A x D not exceeding 105



RUDDER PLATE .80"

RUDDER ARMS 5 x 3"
5 x 1" AT POINT

MAINPIECE IN WAY OF ARMS
TO BE INCREASED FOR 10%

IN ARMS 1/8" RIVETS SPACED 4 1/2" C.C.

HEIGHT OF MAINPIECE 13'-8"

BASE LINE

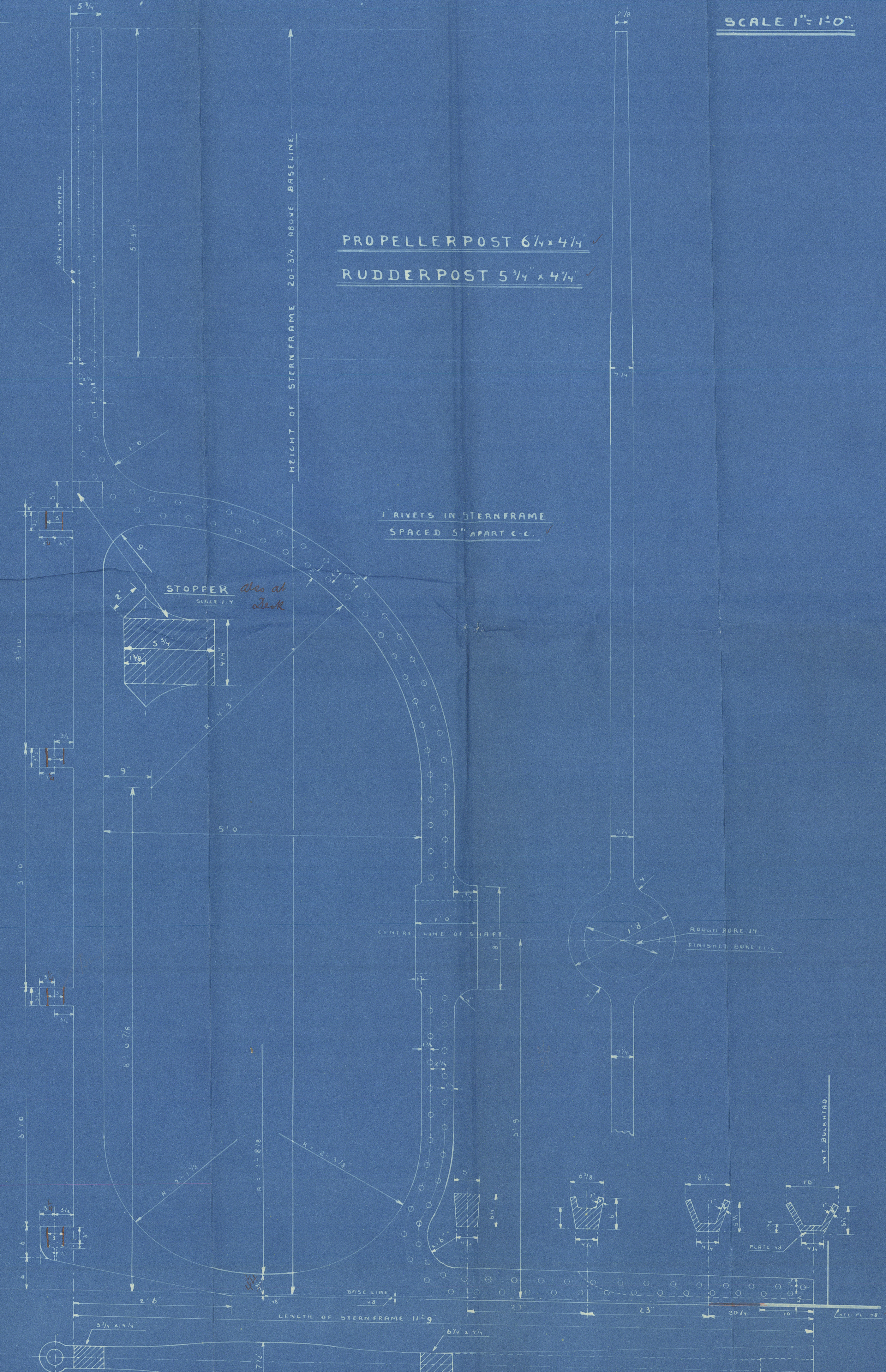
STEAM HOPPER BARGE.

Nº 499.

TO CLASS: 100 A.1. AT LLOYDS.

STERN FRAME.

SCALE 1" = 1'-0".



Comilla
10/10/25

Messrs J. Meyers & B. Co

Yard No 499.

Sternframe & Rudder,

Foremost 36

Gen. Box 733



© 2020

Lloyd's Register
Foundation

007422-007431-0083