

30 OCT 1945

Index No. 38255
(For London Office only).

Lloyd's Register of Shipping.

SURVEYS FOR FREEBOARD.

(CONDITIONS OF ASSIGNMENT.)

Sms Rpt No. 21906

Ship's Name **"EMPIRE TAGEOS" (EX "ADRIA")**
N.N. KARPATY

Official Number **180598**

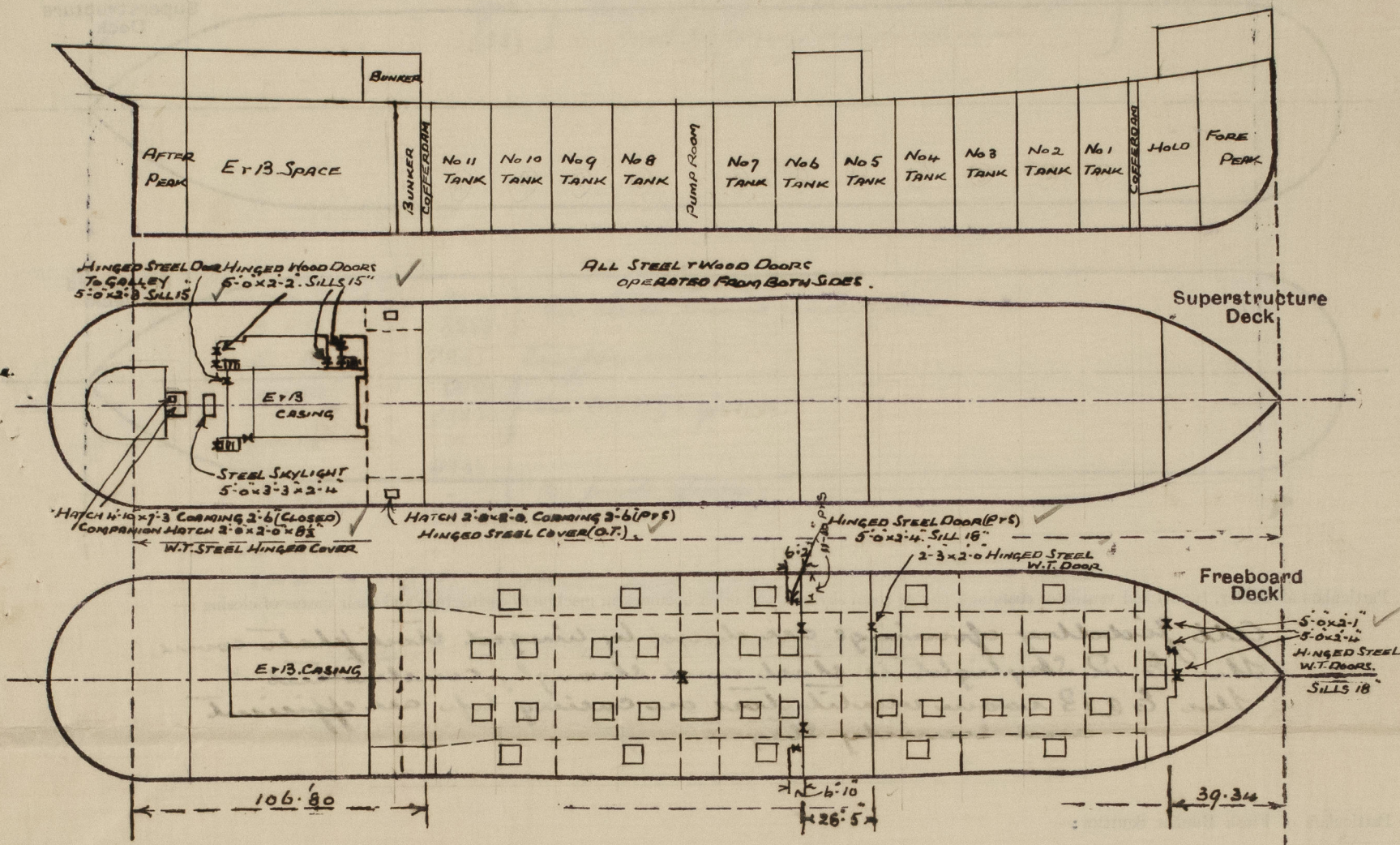
Nationality and Port of Registry **BRITISH, LONDON.**

Port of Survey **IMMINGHAM**

Surveyor's Signature **F. J. Palmer**

Date of Survey **5 & 16 OCTOBER 1945**

Disposition and dimensions of superstructures, trunks, deckhouses and machinery casings to be inserted in the diagrams and tabular statement:—



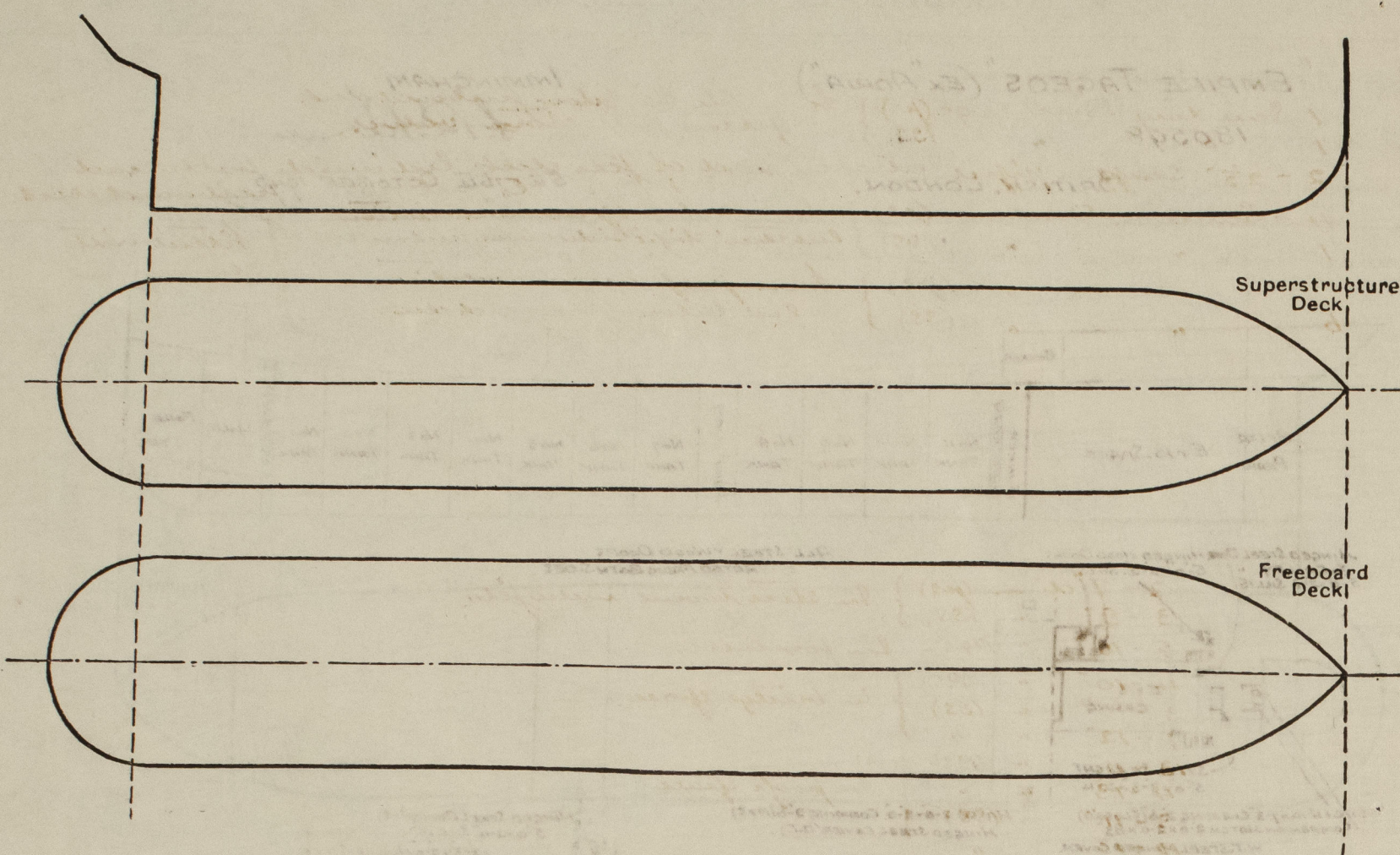
Particulars of Superstructures, Trunks, Casings, Deckhouses.

	Coaming	Plating	Stiffeners	Spacing	End Attachments of Stiffeners	Size of Openings	Height of Sills	Height of Casings
Poop Bulkhead ...	✓	.40	7½ x 3 x .40 BA	2'-0"	BKTS TOP & BOTTOM	NONE	✓	7'-6" ✓
Raised Quarter Deck Bulkhead ...								
Bridge, After Bulkhead ...	✓	.38	5½ x 2½ x .38 BA	2'-6"	✓	TWO 5'-0" x 3'-0"	18"	7'-6" ✓
Bridge, Forward Bulkhead ...	✓	.40	9 x 3½ x .40 BA	2'-6"	BKTS TOP & BOTTOM	ONE 2'-3" x 2'-0"	24"	7'-6" ✓
Forecastle Bulkhead ...	✓	.38	3 x 3 x .32 a	2'-3"	✓	THREE (2) 5'-0" x 2'-4" (1) 5'-0" x 2'-1"	18"	7'-6" ✓
Trunk, Aft ...								
Trunk, Forward ...								
Exposed Machinery Casings on Freeboard or Raised Quarter Decks ...								
Exposed Machinery Casings on Superstructure Decks ...	✓	.32	3 x 3 x .32 a	2'-6"	✓	COMPANION DOORS TO ACCOMMODATION 5'-3" x 2'-4" (3) ONE 5'-3" x 2'-3" (5)	18"	7'-6" ✓
Machinery Casings within Superstructures not fitted with Class I Closing Appliances ...								
Deckhouses on Flash Deck Ships PUMP ROOM ...	✓	.32	5 x 3 x .32 BA	2'-3"	BKTS AT CENTRE LINE & SIDES	5'-4" x 2'-10"	18"	7'-6" ✓

Particulars of Closing Appliances (state if capable of being manipulated from both sides).

Poop Bulkhead ...	NO OPENINGS ✓							
Raised Quarter Deck Bulkhead ...								
Bridge, After Bulkhead ...	TWO HINGED STEEL W.T. DOORS, OPERATED FROM BOTH SIDES. ✓							
Bridge, Forward Bulkhead ...	ONE	"	"	"	(P.S.)	"	"	"
Forecastle Bulkhead ...	THREE	"	"	"	"	"	"	"
Exposed Machinery Casings on Freeboard or Raised Quarter Decks ...	THREE	"	"	"	"	"	"	"
Exposed Machinery Casings on Superstructure Decks ...	ONE	"	"	"	(COMPANION)	"	"	"
Machinery Casings within Superstructures not fitted with Class I Closing Appliances ...	ONE	"	"	"	"	"	"	"
Deckhouses on Flash Deck Ships PUMP ROOM ...	ONE	"	"	"	"	"	"	"

The following diagrams should be used to indicate the positions of cargo and coaling hatchways, gangway, cargo and coaling ports, ventilators, companionways, etc., which would affect the seaworthiness of the ship:—



Particulars of fiddley, funnel and ventilator coamings, engine room skylight and other openings in machinery casing tops and their means of closing :—

All fidchley openings are closed by hinged steel plate covers. The E. 12. Skylight is steel and strongly constructed. ✓
The E. 13 room ventilators on casing top, are efficient and securely stayed. ✓

Particulars of Flush Bunker Scuttles :—

None ✓

Particulars of Companionways:—

Three stack compartments in prop. to accommodation
@ 6 x 13 spaces, with openings 5'-3" x 2'-4", 18" sills, closed by
stack doors operated from both sides. ✓

Particulars of Ventilators in exposed positions on freeboard and superstructure decks :—

FORECASTLE :- 1-9" diam, Coaming 3-3" x 7/8" To store
5-7" " " 3-6" x 7/8" " accommodation.
1-15" " " 2-6" x 3/8" - for $\frac{1}{2}$ hold.

FORE DECK :- 2-15" " " 2-9" x 7/8" " "
2-6" " " 2-9" x 7/8" " Cofferdam

AFTER DECK :- 2-6" " " " " "
2-15" " " " " " " Main pump room.

POOP DECK AND CASING TOP.

6 - 6"	"	"	1 - 6" x 3/8"	TO ACCOMMODATION (PS) (BOAT DECK)
2 - 11"	"	"	"	TO STORE ROOMS (AFTER DECKHOUSE TOP)
1 - 11"	"	"	"	TO GALLEY ON CASING TOP.
1 - 14"	"	"	ON POOP DECK (SS) TO ENGINE ROOM SECURED TO CASING SIDE.	

ALL VENTILATORS ARE CLOSED BY WOOD PLUGS & CANVAS COVERS OR
STEEL HINGED COVERS ✓

Particulars of Air Pipes in exposed positions on freeboard, raised quarter, or superstructure decks :—

1 - 4" AIR PIPE TO EACH MAIN OIL TANK, CORMING LED INTO COMMON PIPES CARRIED UP FORE Q MAIN MASTS.
 1 - 4" " " " " SUMMER TANK 8'-0" ABOVE DECK, FITTED WITH GAUGE WIRE Q CANVAS COVER.
 1 - 3 1/2" " " AT FORE END OF FORE DECK TO FORE BUNKER LED UP FLE FRONT 6'-0" GOOSENECK SILL.
 4 - 3 1/2" " " " " " POOP DECKHOUSE, 8'-0" GOOSENECK SILL.
 6 - 2" " " ON POOP DECK (PS) } TO AFTER TANKS, 32" SILL,
 5 - 2" " " " (SS)

OPENINGS CLOSED WITH WOOD PLUGS OR HINGED PLATES.

Particulars of Gangway Cargo and Coaling Ports:—

Empire Pageos.

Name _____

Particulars of Scuppers and Sanitary Discharge Pipes :—

1 Sanitary Discharge (pc) } from file led below foreward deck
1 " " (SS) } filled with storm valve.
2 - 2 1/2" Scupper pipes at after end of file deck led inside bulkhead
4 - Sanitary Discharge (pc) } from relieving accommodation
1 " " (SS) } led thro' slip side above foreward deck } filled with
5 " " (pc) } from poop accommodation } storm valve.
6 " " (SS) } led below foreward deck }

Particulars of Side Scuttles :—

2 - 8" diam (PS) } In store room under file.
3 - 8" " (SS) }
5 - 10" " (PS) } In forecabin.
4 - 10" " (PS) }
3 - 10" " (SS) } In bridge space.
1 - 12" " " }
13 - 11" " (PS) }
4 - 13" " " } In poop space ✓
3 - 11" " (SS) }
12 - 13" " " }
1 - 11" " (PS) } Below poop space.
2 - 11" " (SS) }

All fitted with hinged deadlights.

Vertical distance of Sill of lowest Side Scuttle above top of keel.....30'-6"

Particulars of Guard Rails :—

One pile 3'-6" high, 3 rails, stanchions 11'-6" apart.
One Post 3'-6" " 3 " " 11'-6" "
In Wells 3'-6" " top bar 7' x 2 1/2" B.A. C two rails 9' apart.
Stanchions 11'-3" apart.

Particulars of Gangways, Lifelines, etc. :—

Strongly constructed f@ a gangways are fitted from forecastle to bridge & from bridge to poop with efficient supports about 9'-0" apart.

Particulars of Freeing Arrangements.						
	Length of Bulwark	Height of Bulwark	Size of Freeing Ports	Number each side	Area each side	Rule area each side
After Well	16'-0" FROM RAFT 12'-0" " 1321055	7'-6" To 3'-6"	<div style="display: flex; align-items: center;"> <div style="font-size: 4em; margin-right: 10px;">}</div> <div> <p>OPEN RAILS OTHERWISE IN WELLS.</p> <p>SHEERSTRAKE PLATE 11' ABOVE DECK.</p> </div> </div>			
Forward Well	10'-0" FROM BRIDGE 11'-0" " FOLE	7'-6" To 3'-6"				

State position of each freeing port	{ After Well :— ✓ { Forward Well :— ✓
(F. and A. position and height above deck edge)			

State whether the freeing ports are fitted with shutters, bars, or rails, and give particulars of such:—✓

Additional area where sheer is less than standard.

PARTICULARS OF PROTECTION TO OPENINGS, ETC.

HATCHWAYS ON FREEBOARD AND SUPERSTRUCTURE DECKS.										
← FREEBOARD DECK → SUPERSTRUCTURE →										
Description of Hatchway			FORWARD HATCH	32 OIL HATCHES	COFFEDAM (4)	OPENING ON FORWARD HATCH	SKYLIGHT AT FILE FRONT	HATCH ON POOP DECK	SKYLIGHTS (2) ON PUMP ROOM TOP	
Dimensions of Hatchway			6'-6" x 7'-6"	5'-10" x 4'-0"	2'-2" x 2'-0"	3'-0" x 2'-9"	3'-0" x 2'-0"	4'-10" x 7'-3"	4'-6" x 3'-3"	
COAMINGS	{	Height above Deck	2'-6" AT SIDE	2'-7 1/2"	2'-10 1/2"	2'-9"	2'-0" MEAN	2'-6"	2'-3" MEAN	
		Thickness { Sides	1/4"	1/4"	1/4"	✓	3/8"	3/8"	1/30	
		Ends								
		Stiffeners	✓	3" x 3"	✓	✓	✓	✓	✓	
		Brackets, Stays	✓	✓	✓	✓	✓	✓	✓	
HATCH BEAMS	{	Number								
		Spacing	NONE	NONE	NONE			✓		
		Scantling and Sketch								
		Bearing Surface								
FORE AND AFTERS	{	Number								
		Spacing	NONE	NONE	NONE			✓		
		Unsupported Lengths								
		Scantling* and Sketch								
		Bearing Surface								
HATCH COVERS	{	Material	STEEL ✓	STEEL ✓	STEEL ✓	STEEL ✓	STEEL COVER PERMANENTLY HINGED & SCREWED BY TWO	STEEL COVER PERMANENTLY HINGED & SECURED BY TURNBUCKLES		
		Thickness	5/8"	5/8"	5/8"	5/8"		CLOSED		
		How fitted	BOLTED, 5/8" BOLTS 3 1/2" APART	BOLTED, 3 1/2" APART	SCREW DOWN	HINGED COVER				
		Bearing Surface	TOGGLE JOINTED 1-5" APART			2 TURNBUCKLES TURNBUCKLES SCREWS EACH SIDE GLASS 15 x 9		2-10" GLASSES IN COVERS		
Spacing of Cleats			✓	✓	✓	✓	✓	✓	✓	
Number of Tarpaulins			✓	✓	✓	✓	✓	✓	✓	

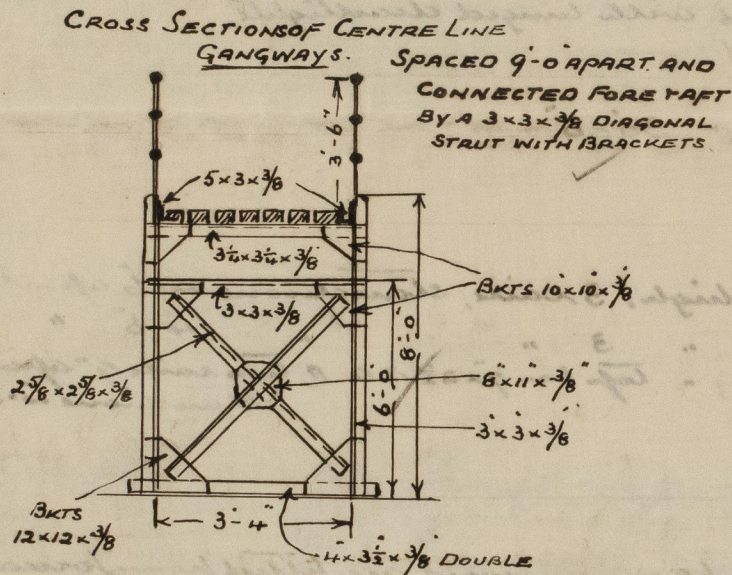
*Are wood fore and afters steel shod at all bearing surfaces?

Are battens and wedges efficient and in good condition? ✓

Are tarpaulins in good condition and in accordance with rule requirements?

Are lashings provided in accordance with rule requirements?

Particulars of any special features :—



Endorsement at first survey and at surveys for renewal of Certificate :—

The fittings and appliances are in accordance with the particulars shown on this form (or as now modified) and are in good condition.