

fld. 1980-

Index No. 37279  
(For London Office only).

# Lloyd's Register of Shipping.

## SURVEYS FOR FREEBOARD.

### (CONDITIONS OF ASSIGNMENT.)

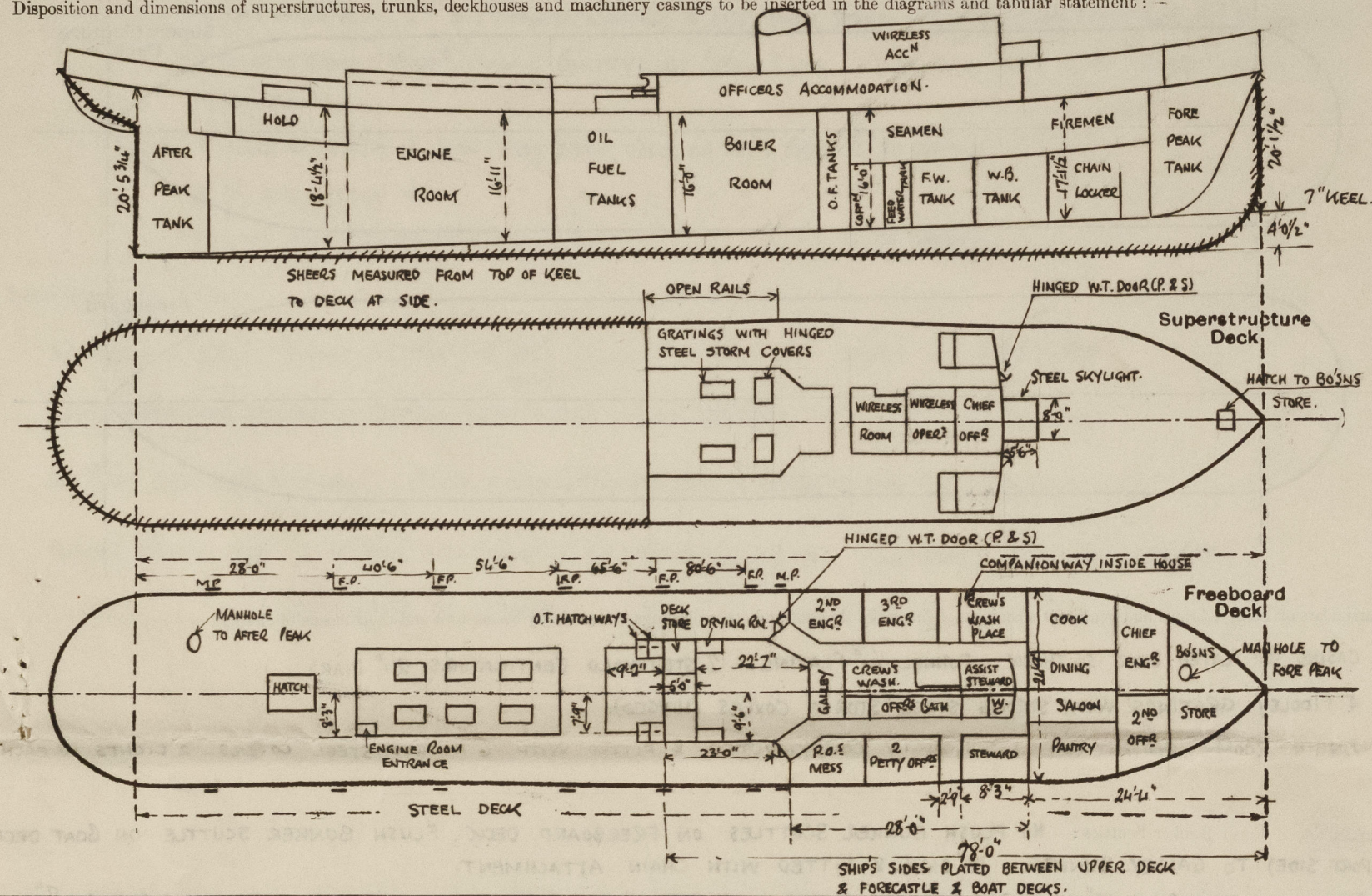
4 JUN 1943

Ship's Name "ANTIC". Port of Survey Hull.

Official Number None Surveyor's Signature J. Macleod

Nationality and Port of Registry BRITISH - None. Date of Survey During construction

Disposition and dimensions of superstructures, trunks, deckhouses and machinery casings to be inserted in the diagrams and tabular statement: -



Particulars of Superstructures, Trunks, Casings, Deckhouses.

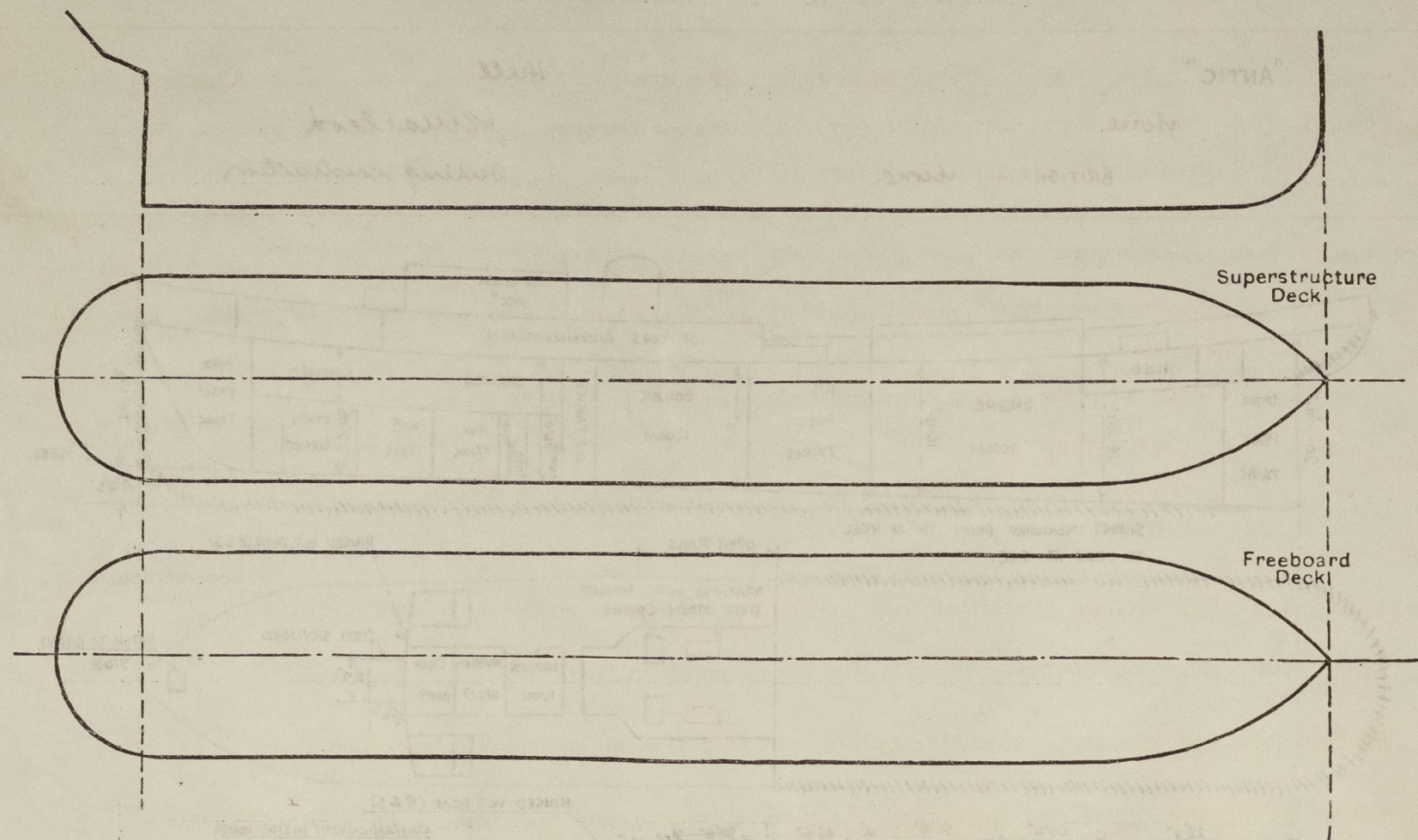
	Coaming	Plating	Stiffeners	Spacing	End Attachments of Stiffeners	Size of Openings	Height of Sills	Height of Casings
Poop Bulkhead ... ..	✓							
Raised Quarter Deck Bulkhead ...	✓							
Bridge, After Bulkhead ... ..	✓							
Bridge, Forward Bulkhead ... ..	✓							
Forecastle Bulkhead (ON FRAME N° 65)	✓	25	2½ x 2½ x 25	30"	NONE	4'10" x 1'9"	15	7'3"
Trunk, Aft (FRAME N° 31-36)...	30	30	3 x 2½ x 30	30"	NONE	4 O.T. HATCHWAYS ON TOP OF TRUNK	✓	3'0"
Trunk, Forward ... ..	✓							
Exposed Machinery Casings on Freeboard or Raised Quarter Decks ...	18" x 32	28	3½ x 2½ x 30	APPROX 26"	BKTS AT TOP	4'0" x 1'9"	24"	7'3"
Exposed Machinery Casings on Superstructure Decks ... ..	✓							
Machinery Casings within Superstructures not fitted with Class I Closing Appliances ... ..	✓							
Deckhouses on Flush Deck Ships ...	✓							

Particulars of Closing Appliances (state if capable of being manipulated from both sides).

Poop Bulkhead ... ..	✓
Raised Quarter Deck Bulkhead ...	✓
Bridge, After Bulkhead ... ..	✓
Bridge, Forward Bulkhead ... ..	✓
Forecastle Bulkhead ... ..	
Exposed Machinery Casings on Freeboard or Raised Quarter Decks ...	TO SALOON, ACCOMMODATION & WASH PLACES ETC. WOOD DOORS 4'10" x 1'9" x 1½" THICK WITH 15" SILLS. TO DECK STORE (PORT) STEEL DOOR 4'0" x 1'9" x 24" SILL. TO DRYING ROOM (P. & S) STEEL DOORS 4'3" x 1'9" x 21" SILL. TO GALLEY (P. & S) STEEL DOORS (IN HALVES) 5'0" x 1'9" x 15" SILL. TO FOOD STORE (STBD) W.T. DOOR 4'0" x 2'3" x 24" SILL.
Exposed Machinery Casings on Superstructure Decks ... ..	TO BOILER ROOM (P. & S) STEEL DOOR 4'0" x 1'9" x 24" SILL.
Machinery Casings within Superstructures not fitted with Class I Closing Appliances ... ..	ENTRANCE DOOR OF COMPANION ON UPPER DECK FORWARD (PORT) WOOD DOOR 4'7" x 1'9" x 1½" THICK WITH 18" SILL. ALL DOORS FITTED WITH SPRING LOCKS OPERATED FROM BOTH SIDES.
Deckhouses on Flush Deck Ships ...	✓



The following diagrams should be used to indicate the positions of cargo and coaling hatchways, gangway, cargo and coaling ports, ventilators, companionways, etc., which would affect the seaworthiness of the ship :—



CASING TOP PLATED OVER .26 THICK. FUNNEL  $\frac{1}{4}$ " PLATING. 2 STOKEHOLD VENTILATORS 24" DIAR.  
4 FIDDLEY GRATINGS WITH STRONG STEEL STORM COVERS (HINGED).  
ENGINE ROOM SKYLIGHT (STEEL) STRONGLY CONSTRUCTED & FITTED WITH 6 HINGED STEEL COVERS- 2 LIGHTS IN EACH COVER

Particulars of Companionways:— UPPER DECK AFT. ENGINE ROOM CASING (AFTER END STBD. SIDE) 2'6" x 2'5" x 24" SILL - PLATING - END 30; TOP 26. AND FITTED WITH TEAK DOOR (HINGED) 2" THICK. - TEAK SLIDING TOP.

UPPER DECK FORWARD. INSIDE SIDEHOUSE (PORT SIDE) PLATING - 75 THICK. STIFFERS. 2 1/2" x 1 1/4" HALF ROUND BAR SPACED 3'3". DOOR 4'7" x 1'9" x 3/8" THICK. WITH 18" SILL. DOORS FITTED WITH SPRING LOCKS OPERATED FROM BOTH SIDES.

UPPER DECK. TO BOILER FEED TANK (P.S.). 2" DIAR. 3'-5" TO MOUTH. PROTECTED BY BULWARK. AIR PIPES TO TANKS SUPPLIED WITH WOOD PLUGS. TO OIL FUEL TANKS SUPPLIED WITH 2 GAUZZES.

" LAMP ROOM (S.S.) 1 1/2" " 3' 6" " " " " " " " " "

" AFTER PEAK TANK (P.S.) 3" " 3' 2" " " " " " " " "

" FORWARD OIL FUEL TANKS. 3 OFF. 3" DIAR. 6'-2" FROM DECK TO OPENING. PROTECTED BY DECKHOUSE.

TRUNK TOP. " AFTER OIL FUEL TANKS. 4 OFF. 3" DIAR. 3' 6" " " " " " " " " "

FORECASTLE DECK. TO FORE PEAK TANK. 3" DIAR. 3'-3" TO OPENING. PROTECTED BY BULWARK. ✓

" SIDE OIL FUEL TANKS (P.S.). 3" DIAR. 5" TO OPENING.

W.B. TANK, F.W. TANK, FEED WATER TANK & COFFERDAM (P.S.) 8 OFF. 2" DIAR. 5" TO OPENING.

NONE.

4 JUN 1943

" CREW'S WASH PLACE & COOK'S ROOM (PORT) 2 $\frac{1}{2}$ " " " " " " " - 16 $\frac{1}{2}$ " " "

" CREW'S W.C. (PORT). 4" " " " " " " 15" TO BOTTOM OF OPENING.

" CREW'S WASH PLACE, 2<sup>ND</sup> & 3<sup>RD</sup> ENGRS. CABINS. 3" DIAR WITH STORM VALVE ON SHIP'S SIDE (PORT). 15" TO OPENING.

" STEWARDS ROOM, 2<sup>ND</sup> OFF<sup>R</sup>S ROOM & PANTRY WASH BASIN & SINK. 2" DIAR. WITH STORM VALVE ON SHIP'S SIDE (STBD)- 13" TO OPENING.

" OFFICERS W.C. (STBD) 4" DIAR WITH STORM VALVE ON SHIP'S SIDE. 15" TO OPENING.

" P.O.'S W.C. (STBD) 4" " " " " " " 15" " " .

" OFFICERS BATH, GALLEY ETC. (STBD) 3" DIA. " " " " " 15" TO OPENING.

BOILER CASING SIDE 2-18" DIAM SIDELIGHTS. (P. & S). WITH HINGED W.I. DEADLIGHTS. - 4'6" FROM UPPER DECK  
TO BOTTOM OF OPENING.

ON BOAT DECK (AFTER END) 3'3" " " 3" " " 4'0" "

" " " (AT SIDES) 2'4" " " 2" " " 3'6" "


NONE.

Particulars of Freeing Arrangements.						
	Length of Bulwark	Height of Bulwark	Size of Freeing Ports	Number each side	Area each side	Rule area each side
After Well ... ..	65'0"	4'0"	28" x 16 1/2"	5	16.0 s.f.	13.0 s.f.
Forward Well ... ..	✓	✓				

State position of each freeing port ... .. { After Well :— FOR POSITION SEE SKETCH ON PAGE 1. 7 1/2" ABOVE DECK EDGE.  
(F. and A. position and height above deck edge) { Forward Well :—

State whether the freeing ports are fitted with shutters, bars, or rails, and give particulars of such :— BALANCED STEEL SHUTTERS.

Additional area where sheer is less than standard.



© 2020  
Lloyd's Register  
Foundation



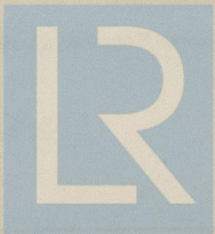
PARTICULARS OF PROTECTION TO OPENINGS, ETC.

HATCHWAYS ON FREEBOARD AND SUPERSTRUCTURE DECKS.									
		TRUNK TOP		UPPER DECK		UPPER DECK.		FORECASTLE DECK	
Description of Hatchway		4 O.T. HATCHWAYS TO AFTER OIL FUEL TANKS		HATCH TO HOLD AFT.		2 O.T. HATCHWAYS TO SIDE OIL FUEL TANKS		HATCHWAY TO BO'SNS STORE	
Dimensions of Hatchway		2 @ 2'0" x 2'6" 2 @ 2'6" x 1'9"		8'0" x 6'0"		11 1/2" x 9 1/2"		2'9" x 2'9"	
COAMINGS	Height above Deck	48"		27"		15"		12"	
	Thickness	.30		.40		.30		.375	
	Sides	.30		.40		.30		.375	
	Ends	.30		.40		.30		.375	
Stiffeners		NONE		NONE		NONE		NONE	
Brackets, Stays		NONE		NONE		NONE		NONE	
HATCH BEAMS	Number	NONE		NONE		NONE		NONE	
	Spacing	NONE		NONE		NONE		NONE	
	Scantling and Sketch	NONE		NONE		NONE		NONE	
	Bearing Surface	NONE		NONE		NONE		NONE	
FORE AND AFTERS	Number	NONE		NONE		NONE		NONE	
	Spacing	NONE		NONE		NONE		NONE	
	Unsupported Lengths	NONE		NONE		NONE		NONE	
	Scantling and Sketch	NONE		NONE		NONE		NONE	
Bearing Surface		✓		✓		✓		✓	
HATCH COVERS	Material	STEEL COVER PLATE .50		PINE		STEEL COVER PLATE .375		STEEL COVER PLATE	
	Thickness	SECURED BY 7/8" DIAR.		3"		SECURED BY 7/8" DIAR.		SECURED BY 7/8" DIAR.	
	How fitted	EYEBOLTS WITH		F.B.A.		EYEBOLTS WITH		EYEBOLTS WITH	
	Bearing Surface	GUNMETAL TOGGLES		3"		GUNMETAL TOGGLES		GUNMETAL TOGGLES.	
Spacing of Cleats		✓		24"		✓		✓	
Number of Tarpaulins		✓		2		✓		✓	
<p>*Are wood fore and afters steel shod at all bearing surfaces? <i>yes.</i></p> <p>Are battens and wedges efficient and in good condition? <i>yes.</i></p> <p>Are tarpaulins in good condition and in accordance with rule requirements? <i>yes.</i></p> <p>Are lashings provided in accordance with rule requirements? <i>yes.</i></p>									

Particulars of any special features :—

Endorsement at first survey and at surveys for renewal of Certificate :—

The fittings and appliances are in accordance with the particulars shown on this form (or as now modified) and are in good condition.



© 2020

Lloyd's Register Foundation