



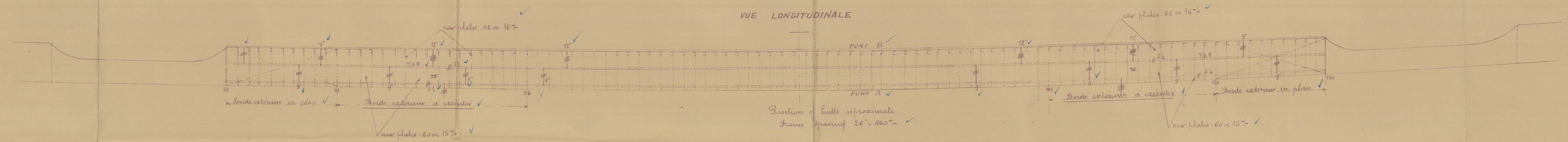
TRANSFORMATION DE CARGOS  
TYPE "BOUSSOLE"

SAINT-ÉLOI

MODIFICATION DU CHÂTEAU ET DU BORDE EXTERIEUR

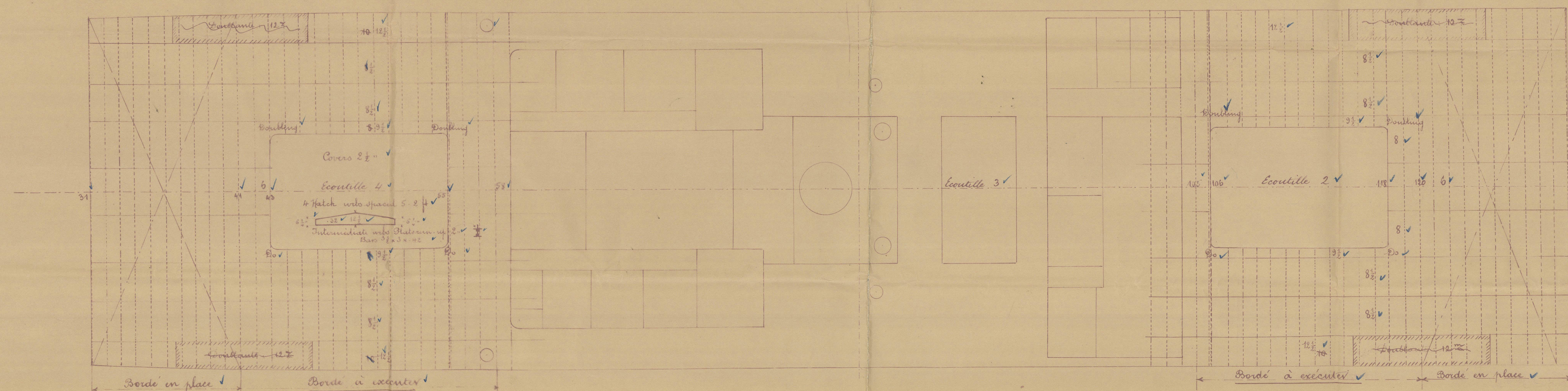
Echelle 1/100

VUE LONGITUDINALE

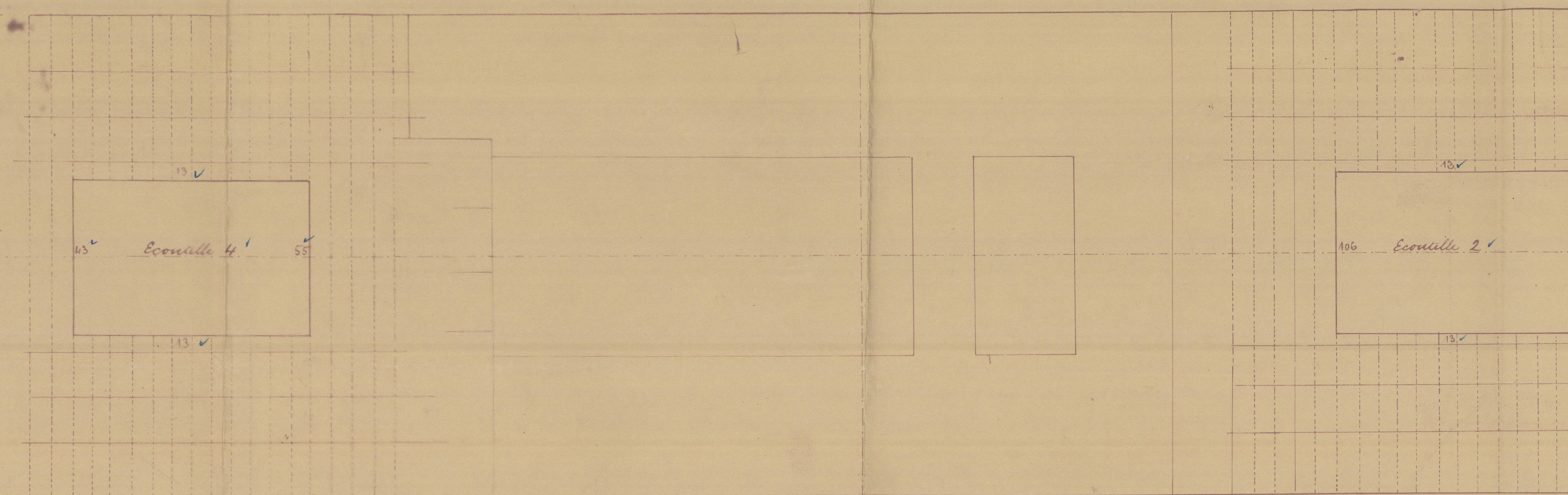


120  
31  
89  
2-2  
198  
166  
214-6

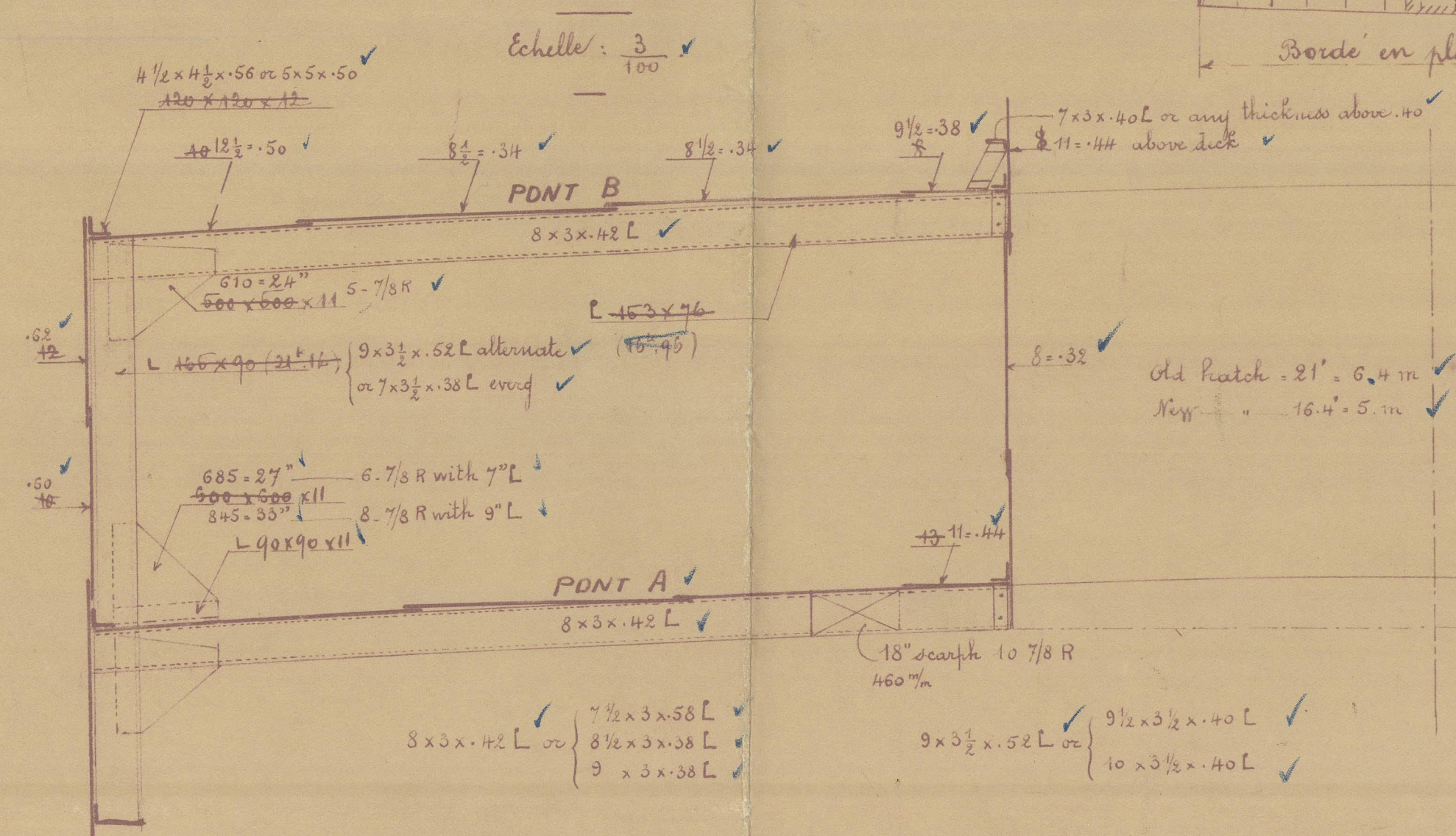
VUE HORIZONTALE DU PONT B



VUE HORIZONTALE DU PONT A

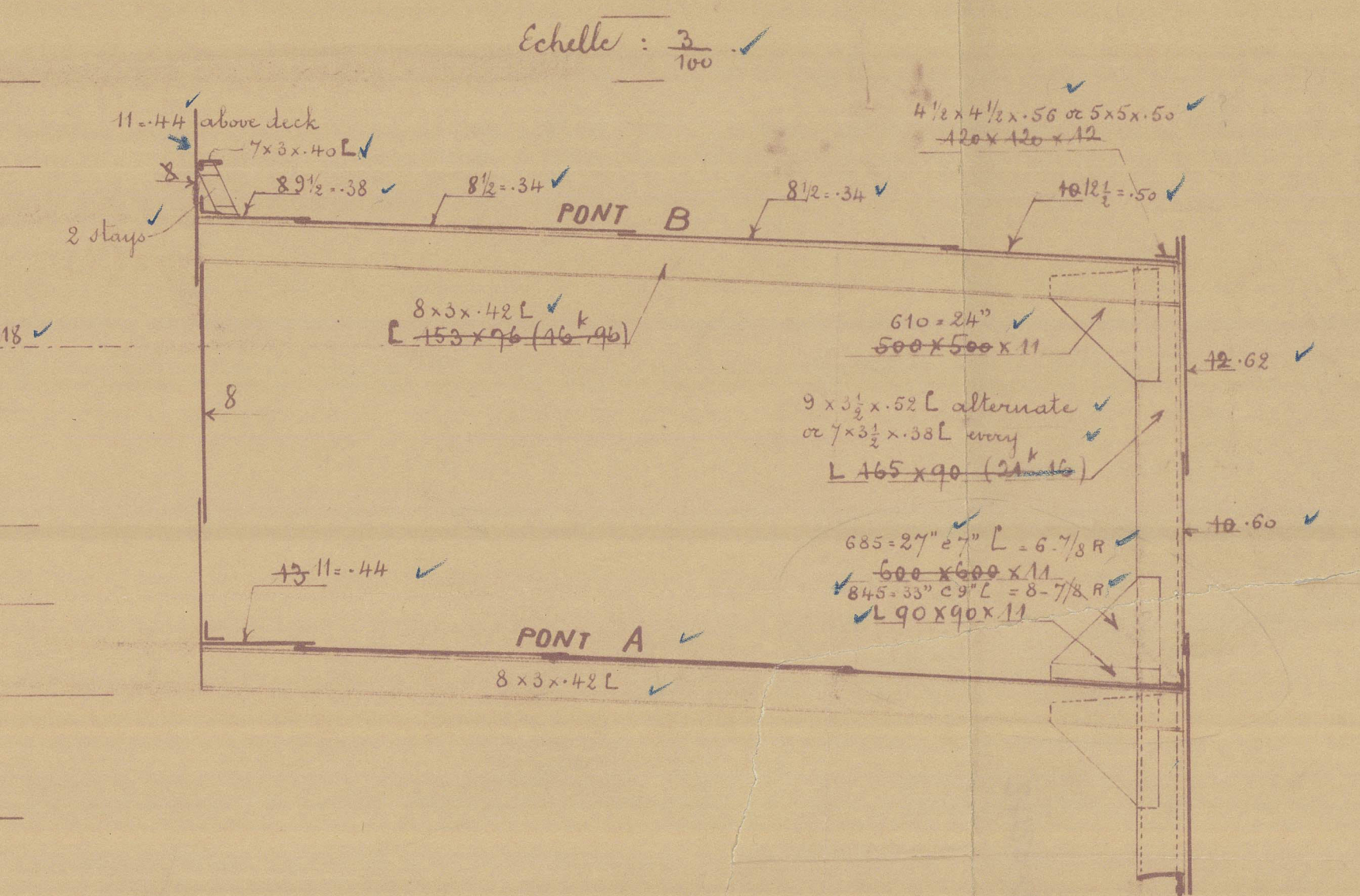


COUPE TRANSVERSALE AU COUPLE 45



Note. Frames in way of existing work platforms to be reinforced equivalent to new frames  
4 frames at every frame at bridge ends

COUPE TRANSVERSALE AU COUPLE 110



Bordeaux, le 7 Août 1930

Approuvé, le 11 Août 1930

1. q. 30.

S. Boussole, (ex St. Eloi)  
Bx n° 16 435