

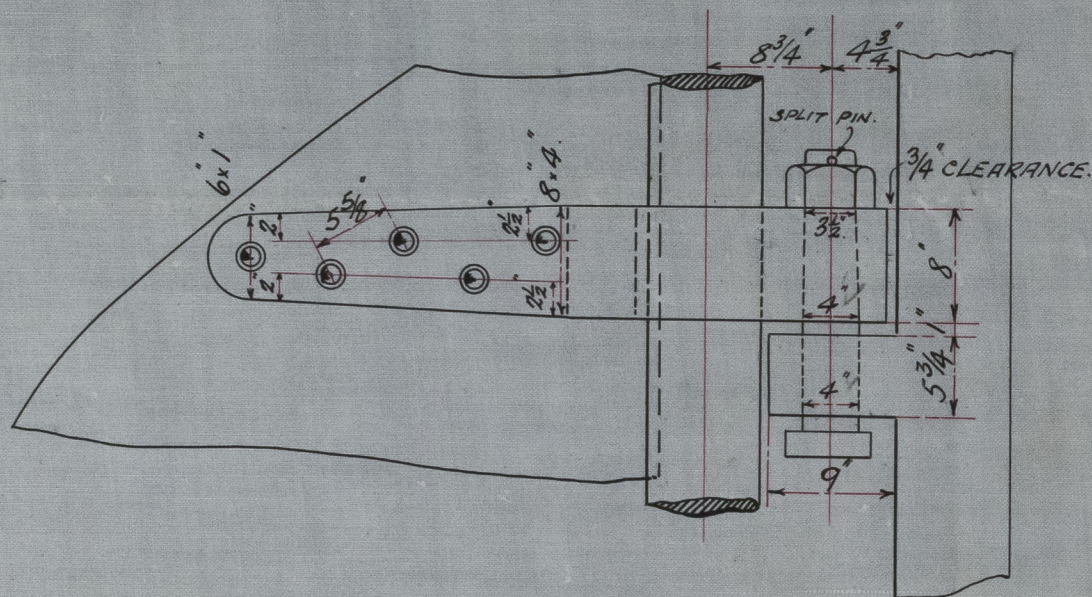
# PROPOSED SINGLE PLATE RUDDER FORGING.

S.S.N<sup>o</sup> 156.

SCALE  $\frac{1}{2}$ " = 1 FT.

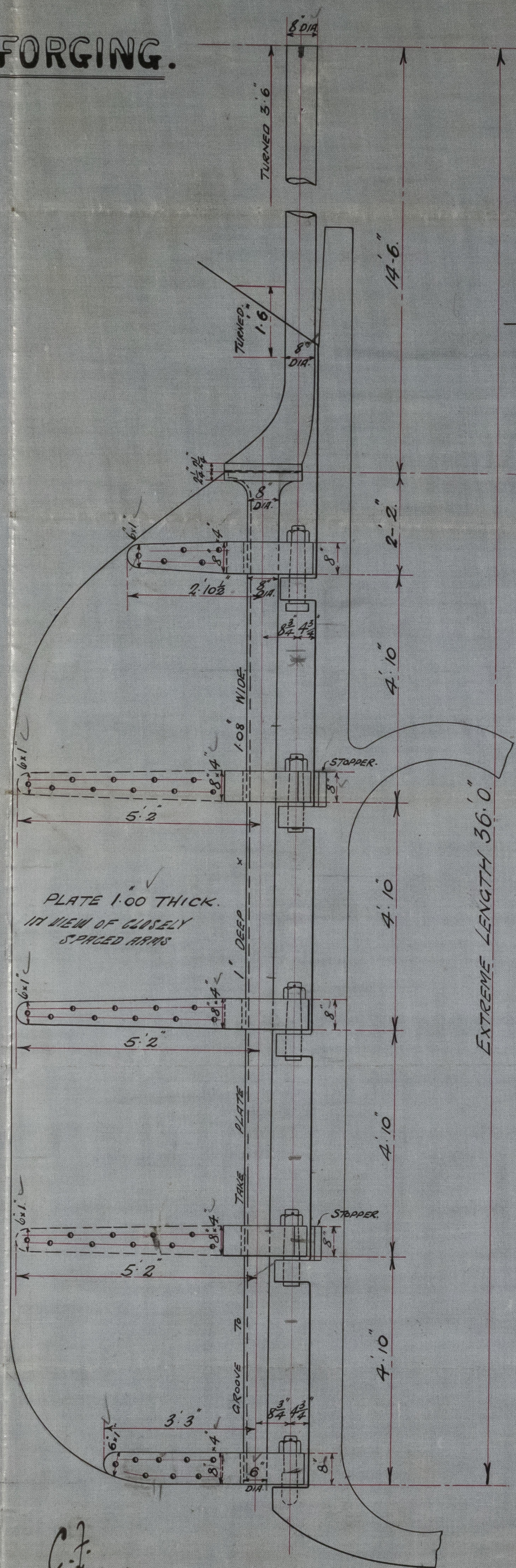
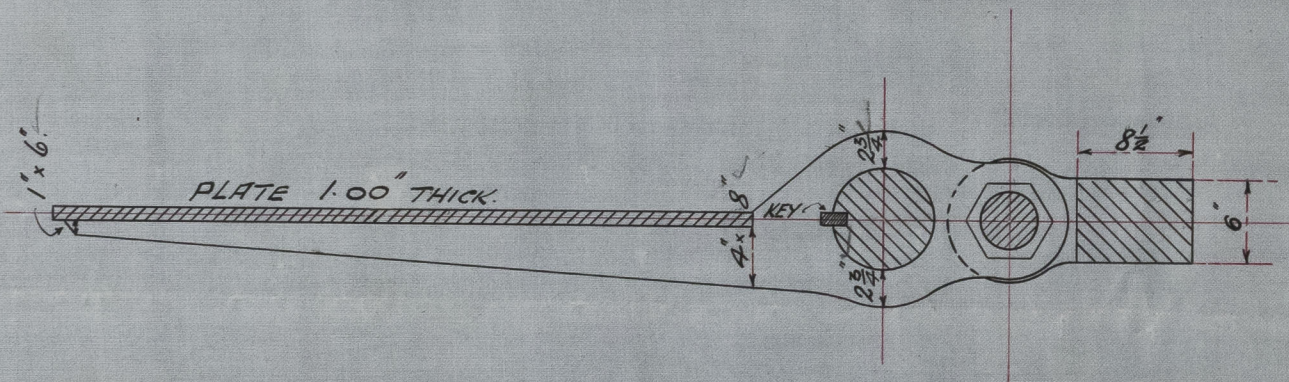
RIVETS  $\frac{1}{4}$ " DIA. SPACED  $5\frac{5}{8}$ " APART C<sup>h</sup> C AS SHOWN  
COUNTERSUNK ON OUTSIDE.

SPEED OF VESSEL UNDER 10 KNOTS PER HOUR.

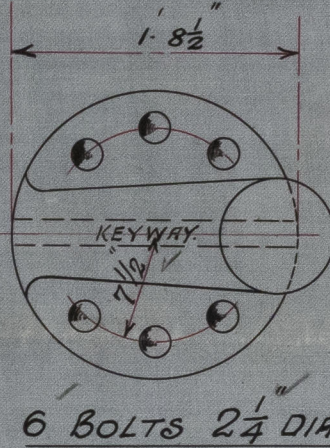


## DETAILS.

SCALE 1" = 1 FT.



## COUPLING.



C.F.  
8/12/09.



NEWCASTLE ON TYNE

RUDER.

REPORT No. 59410