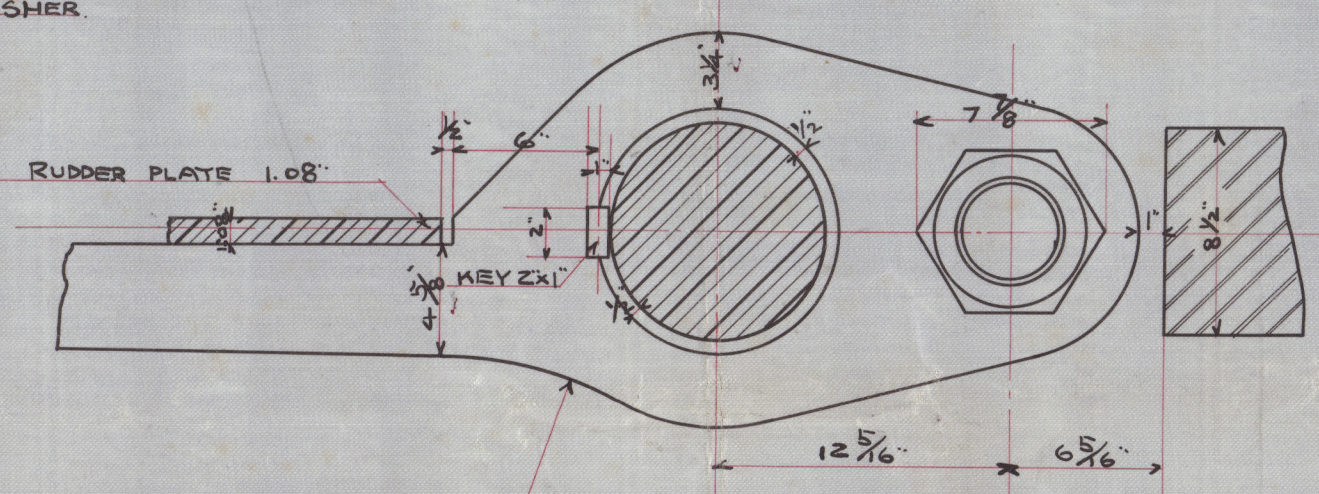
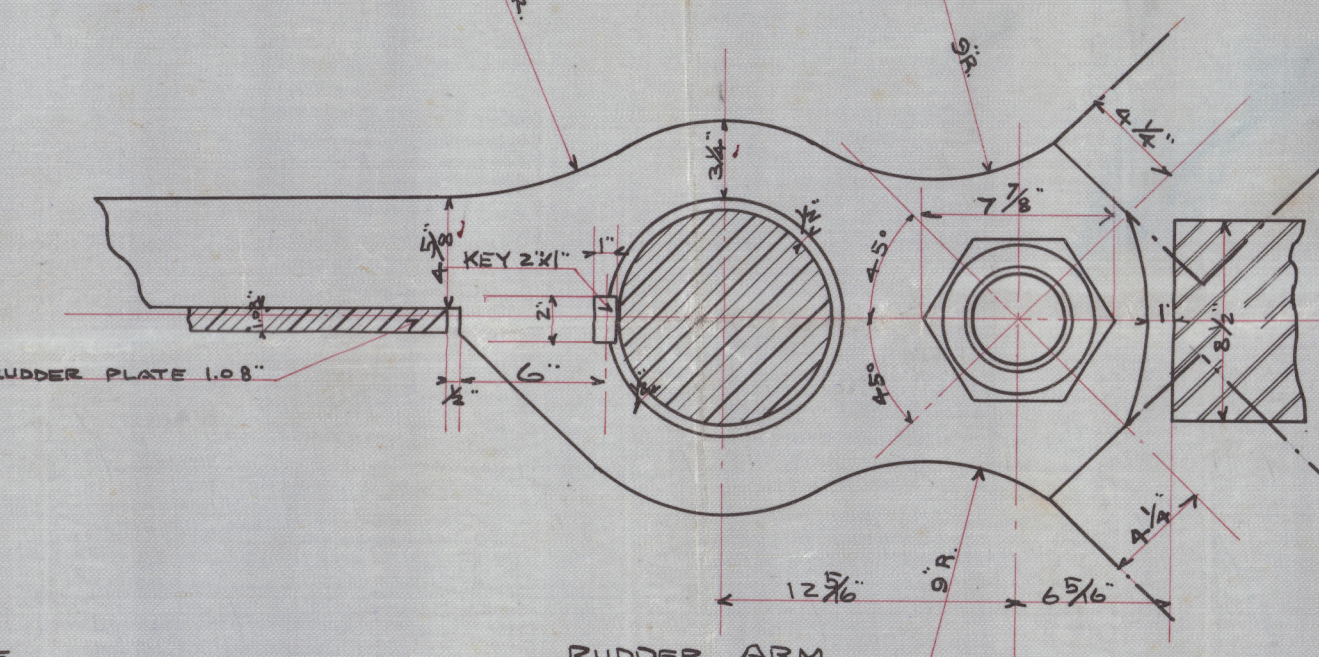
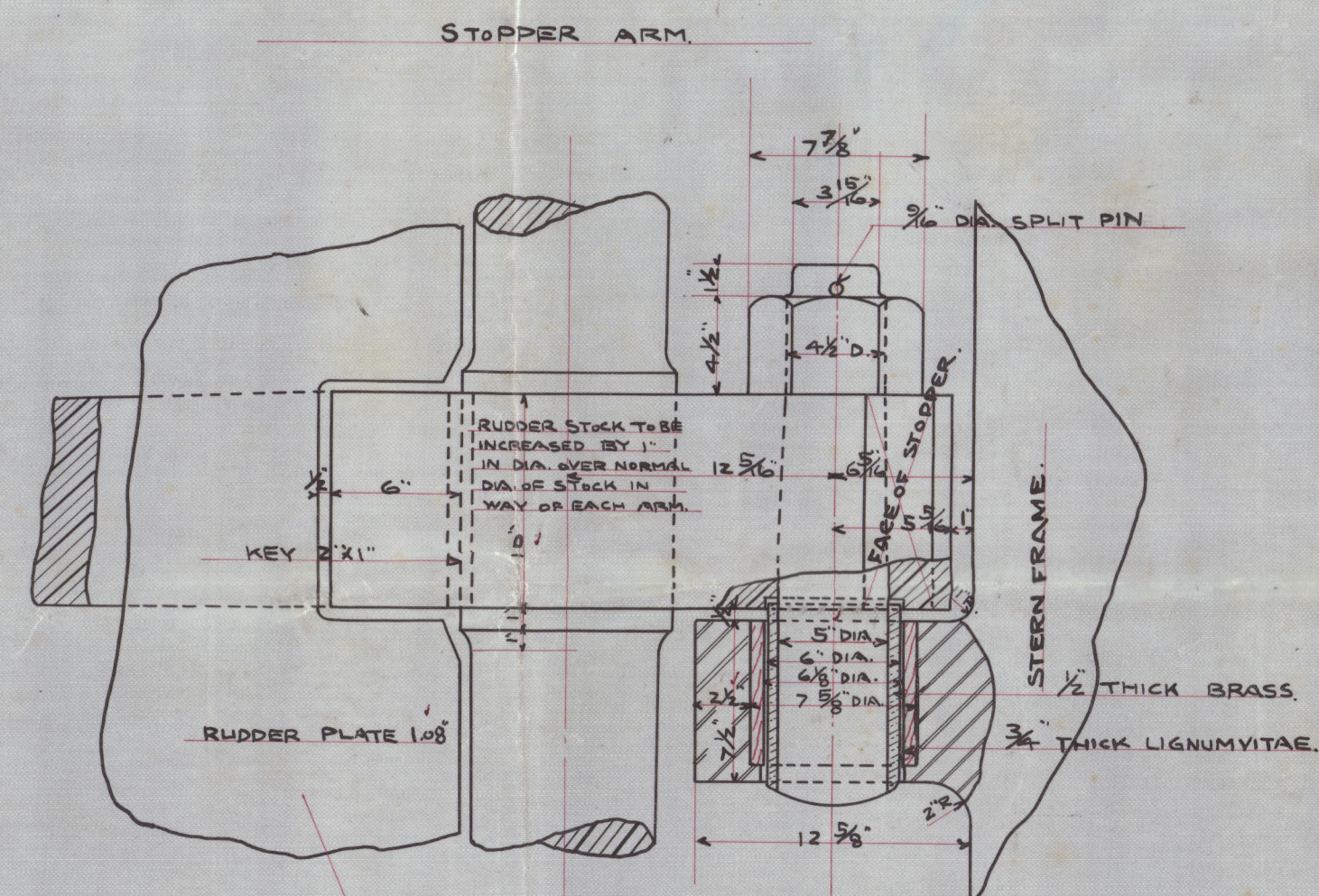
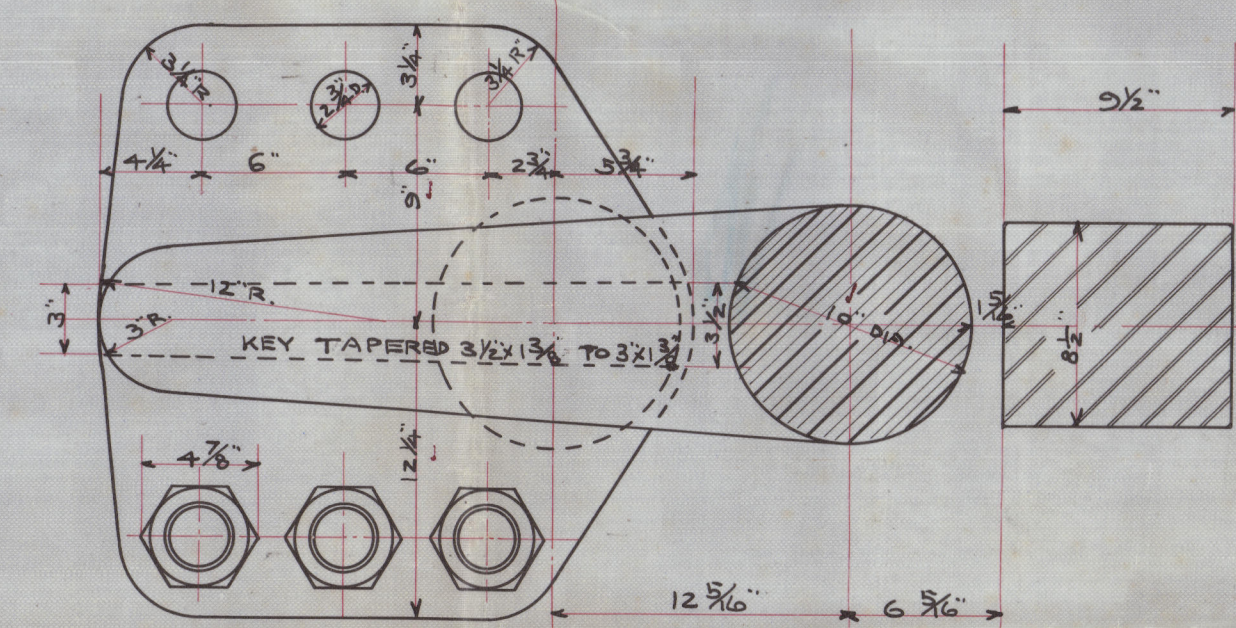
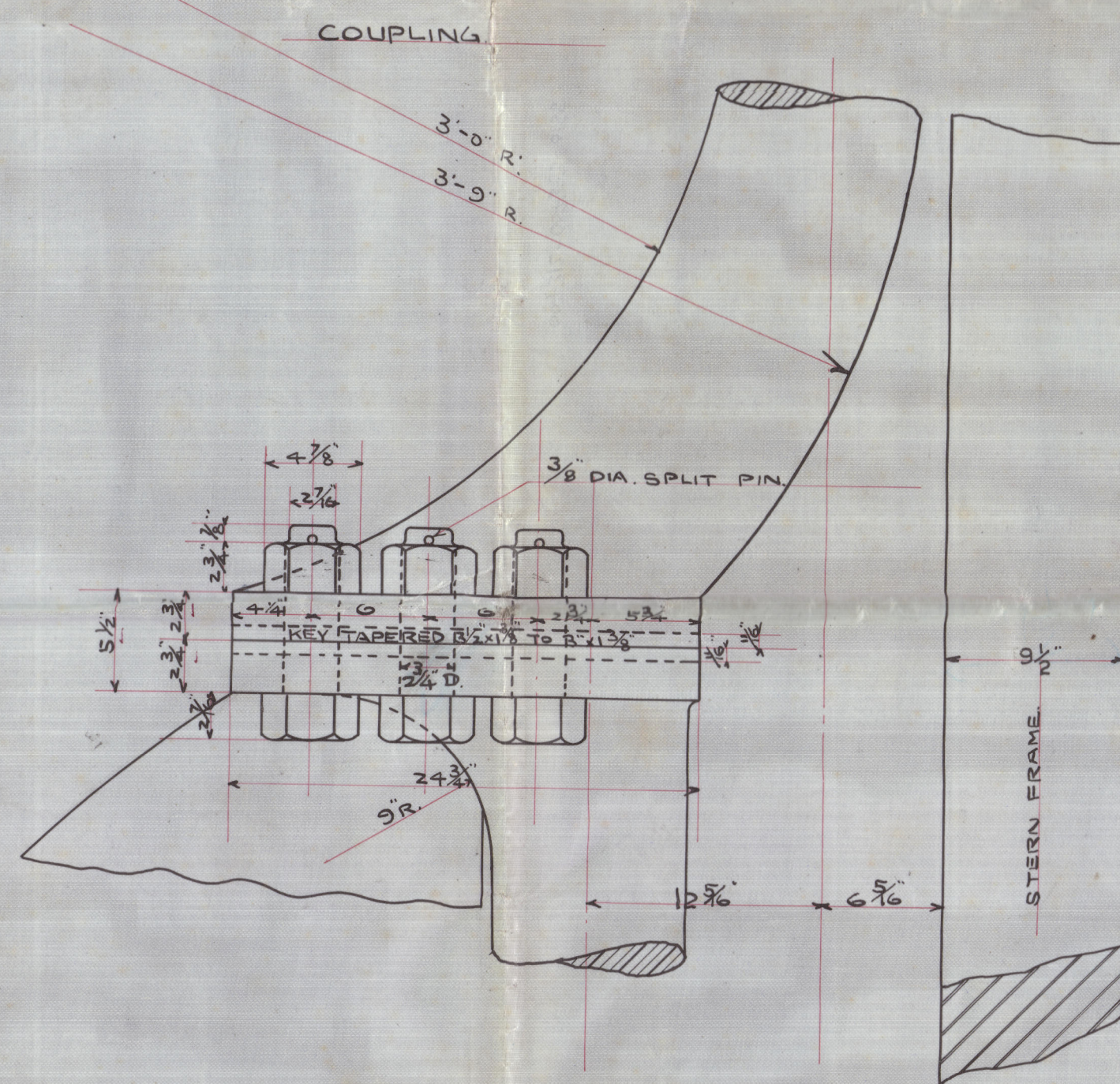


17.9.13

DETAILS.

SCALE $\frac{1}{2}$ INCH TO ONE FOOT.



NOS 242-3. STERN FRAME, SHAFT BRACKET & RUDDER. SCALE $\frac{1}{2}$ TO ONE FOOT.

SCANTLING NUMBER

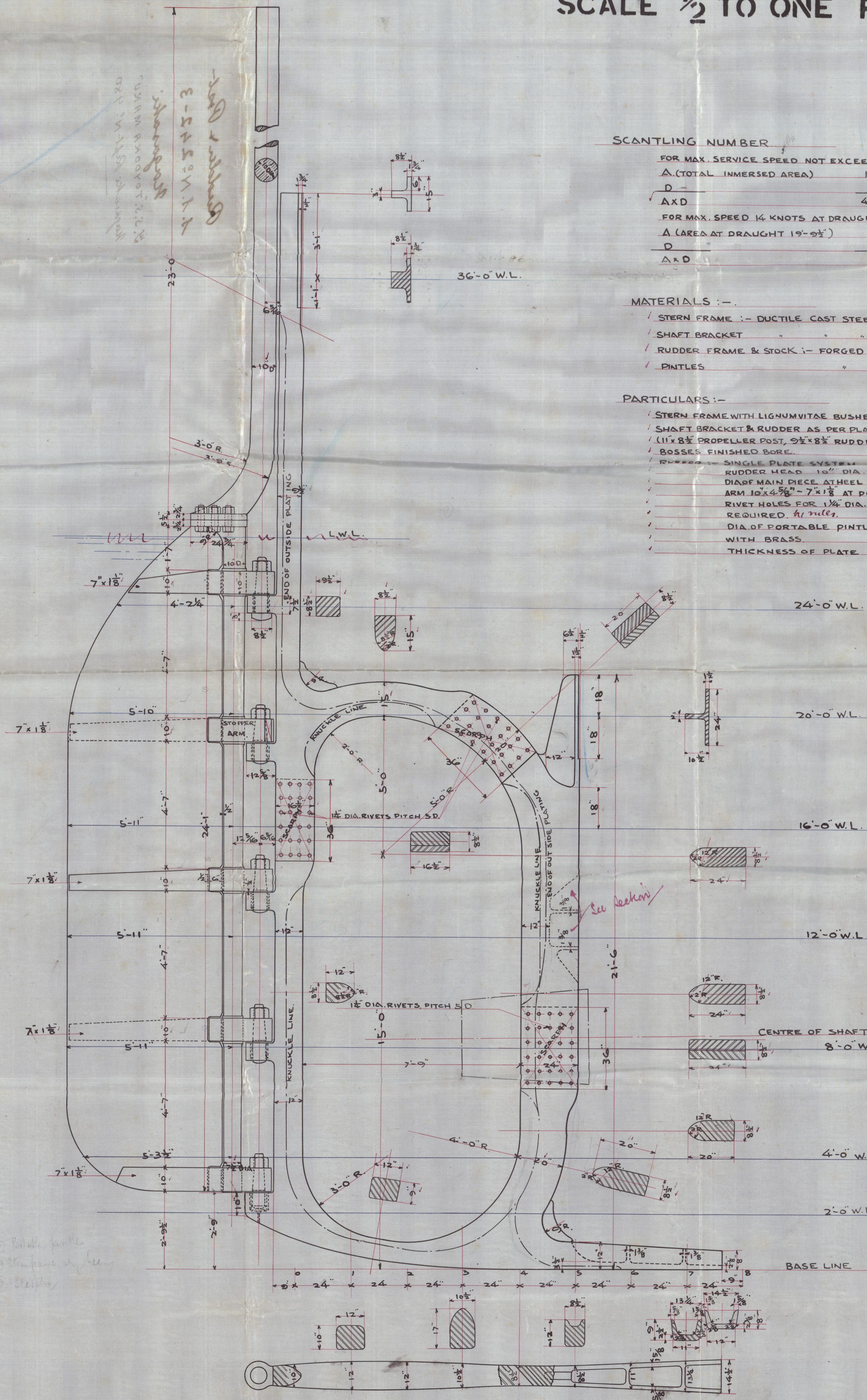
FOR MAX. SERVICE SPEED NOT EXCEEDING 12 KNOTS AT DRAUGHT 26' 8"	
A (TOTAL IMMERSED AREA)	137.31 SQ. FT.
D	3.61 FT.
A x D	495.69
FOR MAX. SPEED 14 KNOTS AT DRAUGHT 19' 8 1/2"	
A (AREA AT DRAUGHT 19' 8 1/2")	105.23 SQ. FT.
D	3.66 FT.
A x D	385.14

MATERIALS :-

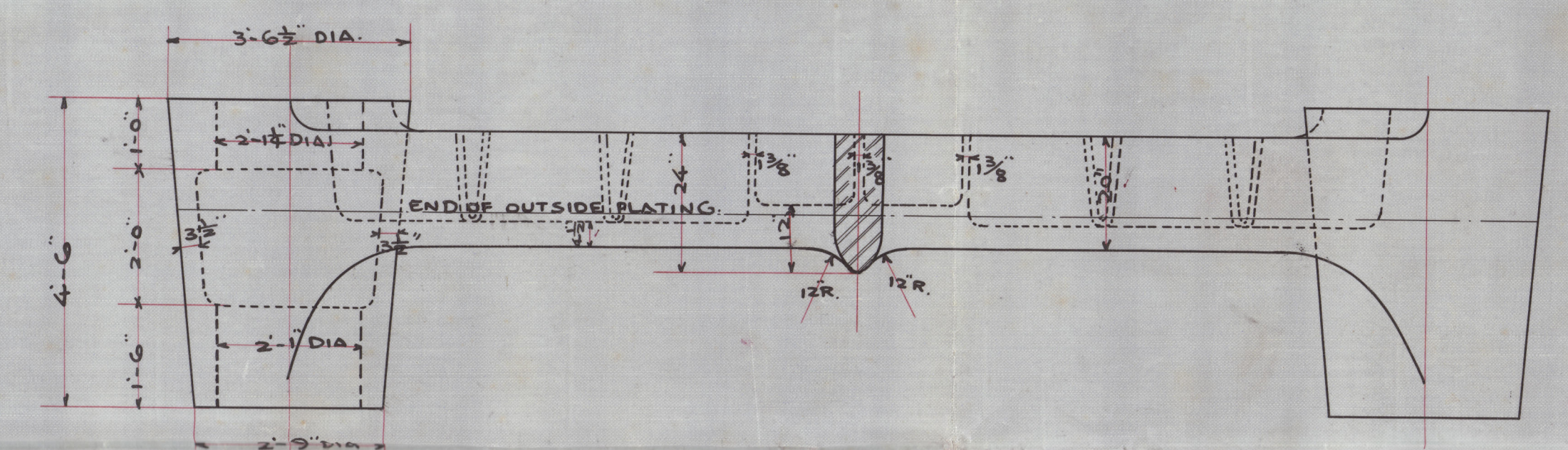
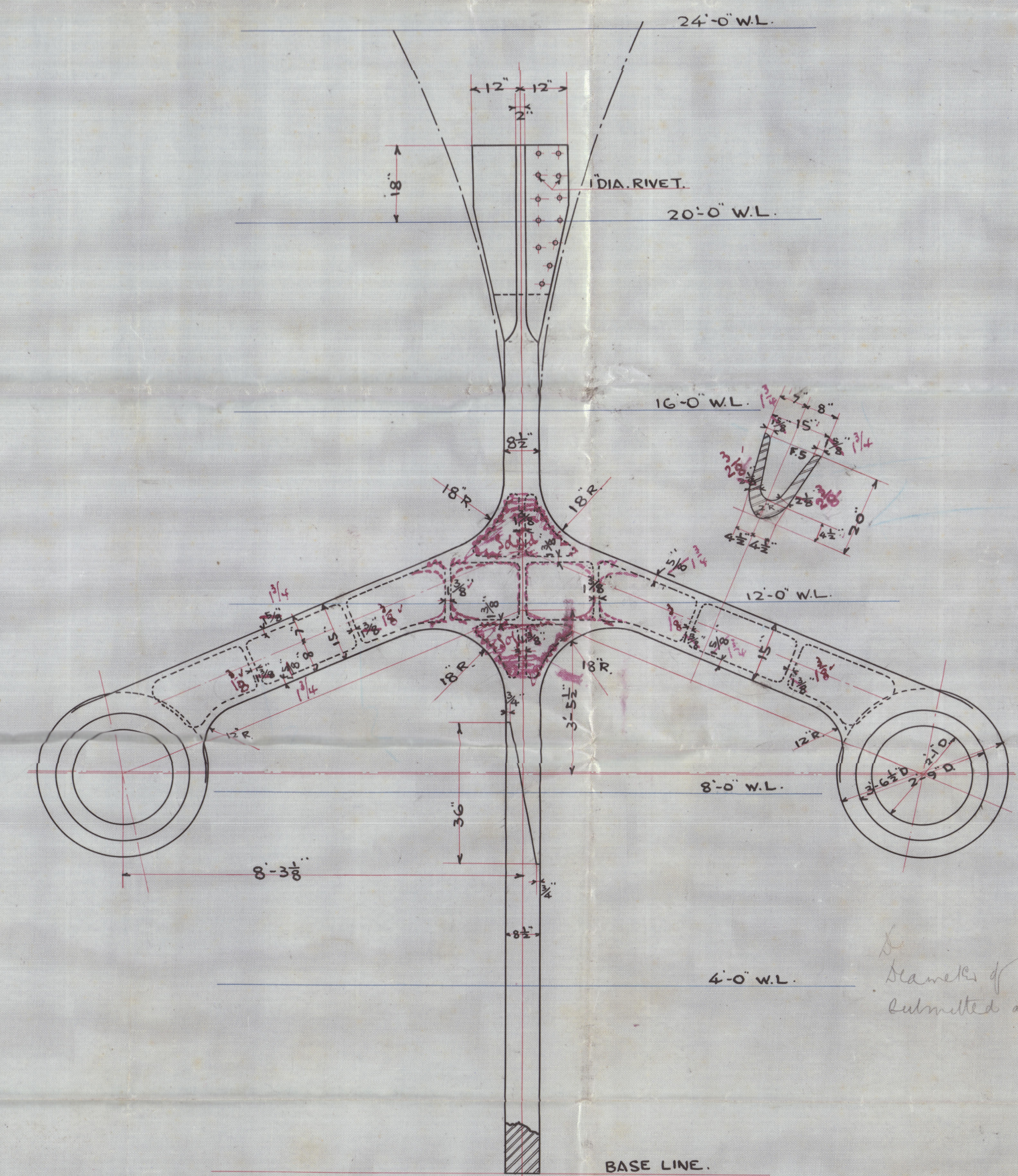
- STERN FRAME :- DUCTILE CAST STEEL.
- SHAFT BRACKET
- RUDDER FRAME & STOCK :- FORGED STEEL.
- PINTLES

PARTICULARS :-

- STERN FRAME WITH LIGNUMVITAE BUSHED BRACES :-
- SHAFT BRACKET & RUDDER AS PER PLAN.
- (11) 8 1/2" PROPELLER POST, 5 1/2" x 8 1/2" RUDDER POST.)
- BOSSES FINISHED BORE.
- RUDDER HEAD SINGLE PLATE SYSTEM.
- RUDDER HEAD 1 1/2" DIA.
- DIAPHRAGM MAIN PIECE ATHEEL 7 1/2"
- ARM 10 1/2" x 4 3/8" - 7 1/2" x 1 1/2" AT POINT.
- RIVET HALES FOR 1 1/2" DIA. RIVET, SPACED AS REQUIRED. 4 1/2" DIA.
- DIA. OF PORTABLE PINTLE 5" SHEATHED WITH BRASS.
- THICKNESS OF PLATE 1.08"



SHAFT BRACKET



242
3/10/13

MANUFACTURED BY
LLOYD'S REGISTER FOUNDATION

Rudder & Post-
S. S. N^o 242-3

Nagasaki
U. S. S. "TOYOOKA MARU"
Nagasaki Rept-N^o 980

Cancelled



© 2021

Lloyd's Register
Foundation

0073127007323-0755