



S.S. N° 75

PROFILE & DECK PLAN.

CLASS 100 H 1 LLOYD'S.

PRINCIPAL DIMENSIONS: 250'-0" x 38'-0" x 22'-3" TO UPPERDECK.

Relieving arrangements throughout to Board & Trade  
Surveys satisfaction WITH 10' FREEBOARD

W.T. BULKHEAD N° 96.  
PLATES VERT. 36"  
STIFFENERS C 6" x 3" x 40" - 24" PART WITH BRACKETS AT TOP & BOTTOM  
SINGLE ANGLE TO SHELL & TANKTOP: 4 1/2" x 4 1/2" x 44"  
DECK: 3 1/2" x 3 1/2" x 32"

CHAIN LOCKER BULKHEAD  
PLATES: 36"  
STIFFENERS: C 5" x 3" x 30" 30" PART  
BOUNDARY ANGLES: 3" x 3" x 28"

FORE CASTLE FRONT  
PLATES: 36" - 10 CORNING  
STIFFENERS: C 4" x 3" x 30" 30" PART  
BOUNDARY: 1" x 3" x 28"

CABINS  
PLATES: 36" PLANGED  
BOUNDARY: C 3" x 3" x 28"  
DECK: 3" x 3" x 30"  
BRIDGE FRONT  
PLATES: 36" 34" CORNING: 36" 38"  
STIFFENERS: C 4" x 3" x 30" 30" PART  
BOUNDARY: 1" x 3" x 28"  
STIFFENERS BRACKETED TOP & BOTTOM

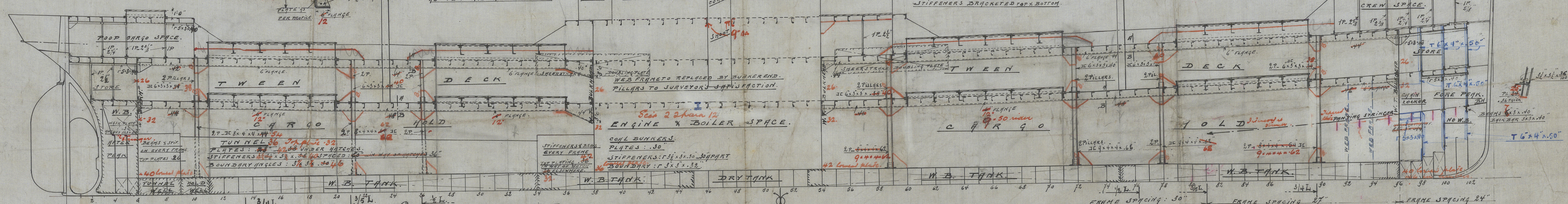
BRIDGE END BULKHEAD  
PLATES: 36" - 10 CORNING  
STIFFENERS: C 4" x 3" x 30" 30" PART  
BOUNDARY ANGLES: 3" x 3" x 28"

See main section

Main section to Surveyors satisfaction

Supporting brackets every 2'-3" beam in way of hatches

W.T. BULKHEAD N° 632-26  
PLATES VERT. 36" lower plate 40"  
STIFFENERS: C 6" x 3" x 40" WITH BRACKET AT TOP - 24" PART  
SINGLE ANGLE TO SHELL & TANKTOP: 4 1/2" x 4 1/2" x 42"  
DECK: 3 1/2" x 3 1/2" x 30"  
POOP FRONT  
PLATING: 36" 34" CORNING: 36" 38"  
STIFFENERS: C 4" x 3" x 30" 30" PART  
BOUNDARY ANGLES: 1" x 3" x 28"



THE RIVETS IN THE FRAMES & PLATING FORMING THE PLAT OF THE BOTTOM SPACED 5 1/2" DIA. APART BEFORE 36" & BOTTOM STRENGTHENED AS PER RULE & TO SURVEYORS SATISFACTION.

PEAK FLOORS: 36" PLANGED  
INTER COSTS: 36"  
ANGLES: 3" x 3" x 30"

PEAK FLOORS: 36" PLANGED  
INTER COSTS: 36"  
ANGLES: 3" x 3" x 30"

1/2 PLAN OF POOP DECK.

N° 4 HATCH.  
3" WOOD COVERS FORE & AFT.  
WEB PLATE BEAMS: 11" x 11" x 54" 12" 32"  
1" 3" DEPTH IN LIEU OF BRACKETED  
DOUBLE TOP & BOTTOM ANGLES: 3" x 3" x 40"  
OR 2" x 4" x 50"  
DECK BEAMS: 3" x 3" x 44" AT SIDES  
3" x 3" x 40" AT ENDS  
3" x 3" x 48" AT CORNERS

SCANTLING AS PER HATCH N° 4.

N° 2 HATCH.  
3" WOOD COVERS FORE & AFT.  
WEB PLATE BEAMS: 11" x 11" x 54" 12" 32"  
1" 3" DEPTH IN LIEU OF BRACKETED  
DOUBLE ANGLES AT TOP & BOTTOM: 3" x 3" x 40"  
OR 2" x 4" x 50"  
DECK BEAMS: 3" x 3" x 44" AT SIDES  
3" x 3" x 40" AT ENDS  
3" x 3" x 48" AT CORNERS

N° 1 HATCH.  
SCANTLING AS PER HATCH N° 2.

1/2 PLAN OF FORE CASTLE DECK.

N° 1, 2, 3 & 4 HATCH  
AS IN ALTERNATIVE THE DIVIDING WEBS TO BE STIFFENED AT BOTTOM WITH 6" PLATE INSTEAD OF DOUBLE ANGLES  
3 WEBS INCREASED 2" IN DEPTH.

1/2 PLAN OF UPPER DECK.

1/2 PLAN OF MAIN DECK.

N° 4 HATCH.  
3" WOOD COVERS FORE & AFT.  
WEB PLATE BEAMS: 11" x 11" x 54" 12" 32"  
1" 3" DEPTH IN LIEU OF BRACKETED  
DOUBLE TOP & BOTTOM: 3" x 3" x 40"  
OR 2" x 4" x 50"  
DECK BEAMS: 3" x 3" x 44"

N° 3 HATCH.  
SCANTLING AS PER HATCH N° 4.

N° 2 HATCH.  
3" WOOD COVERS FORE & AFT.  
WEB PLATE BEAMS: 11" x 11" x 54" 12" 32"  
1" 3" DEPTH IN LIEU OF BRACKETED  
DOUBLE ANGLES AT TOP & BOTTOM: 3" x 3" x 40"  
OR 2" x 4" x 50"  
DECK BEAMS: 3" x 3" x 44"

N° 1 HATCH.  
SCANTLING AS PER HATCH N° 2.



Antwerp, July 75  
Profile. rdc

N.N. Adele Croce

Feb. 11/4/13



© 2021

Lloyd's Register  
Foundation

007257-007265-0120