

~ RUDDER FRAME ~

RUDDER SEMI-BALANCED TYPE.
 FRAME STEEL CASTING.
 STOCK FORGED STEEL.
 MATERIAL TO LLOYD'S AND CANADIAN STEAMBOAT INSPECTION.
 TEST PIECES TO BE CAST OR FORGED WITH MATERIAL.
 RUDDER PLATES TO BE WELDED TO FRAME BEFORE RIVETING.

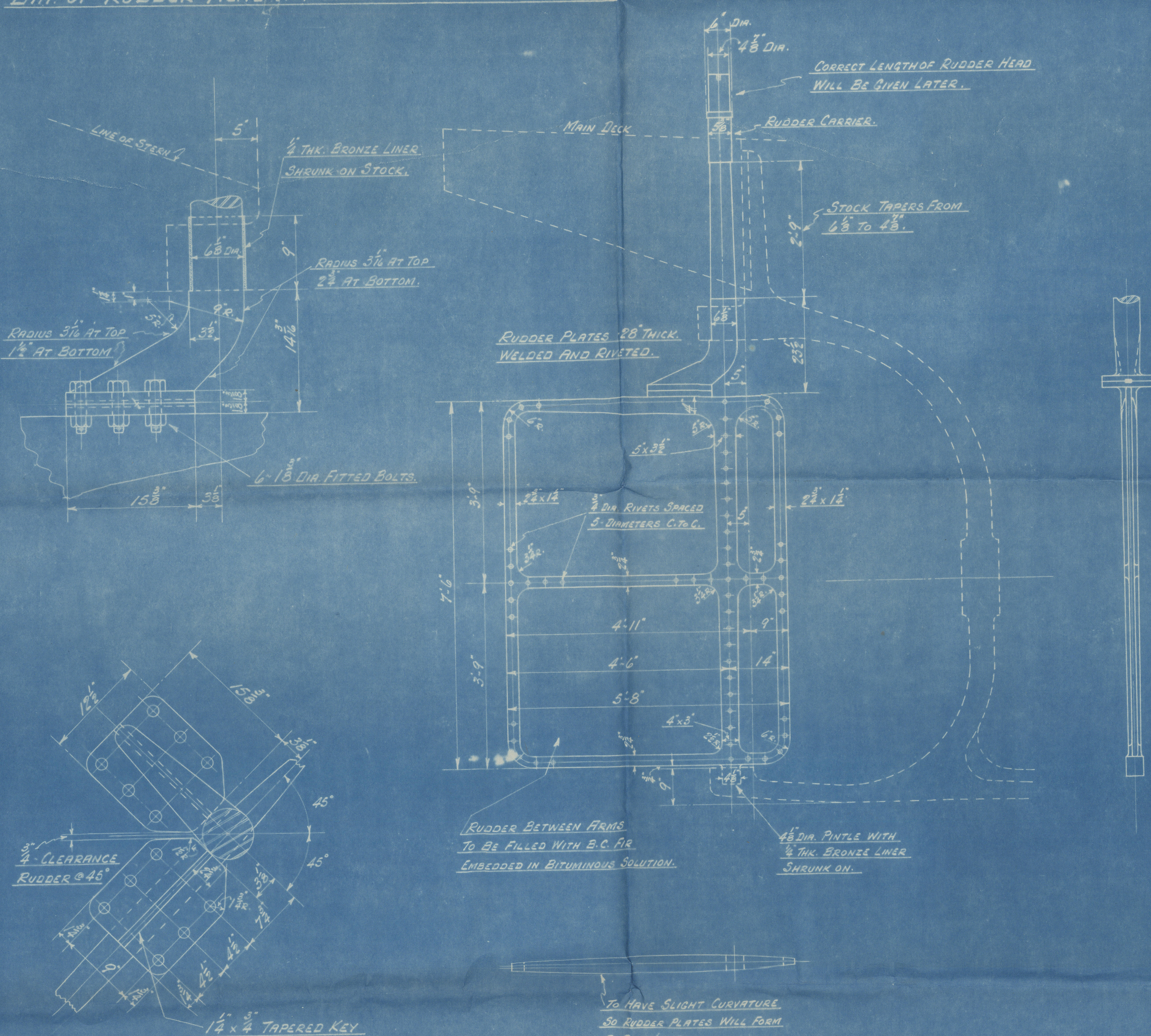
AREA OF RUDDER "A" ABAFT C OF PINTLES "A" 33.75 SQ. FT.

C OF G ABAFT C OF PINTLES "D" 2.25'

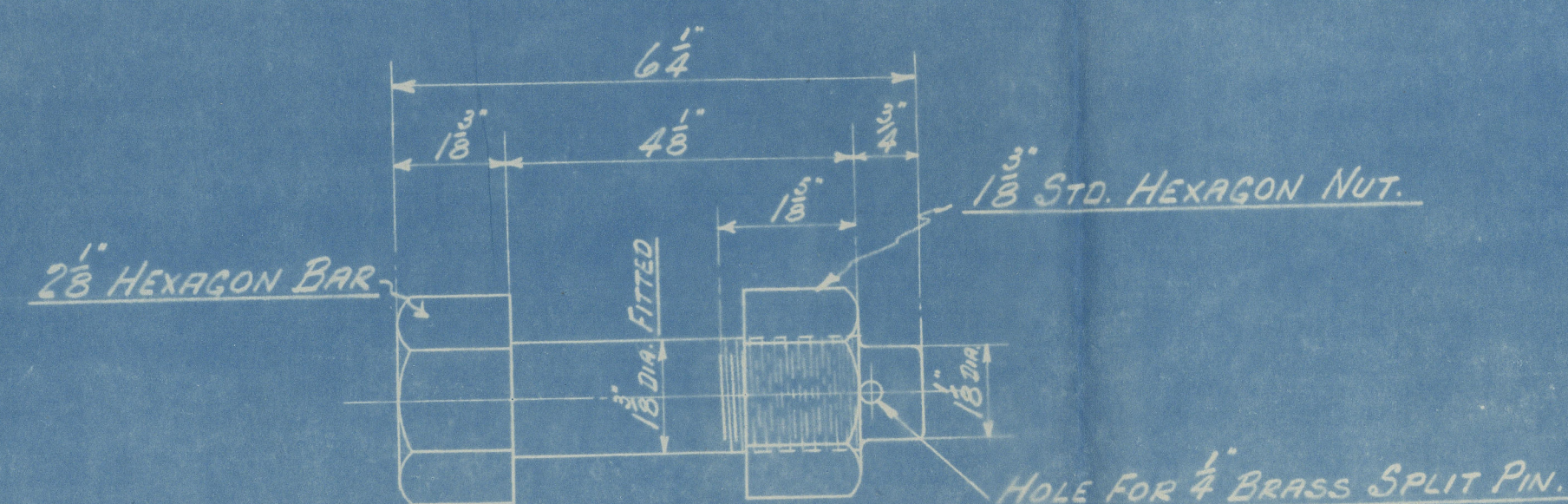
"A" x "D" 75.9

SPEED OF VESSEL UNDER 10-KNOTS.

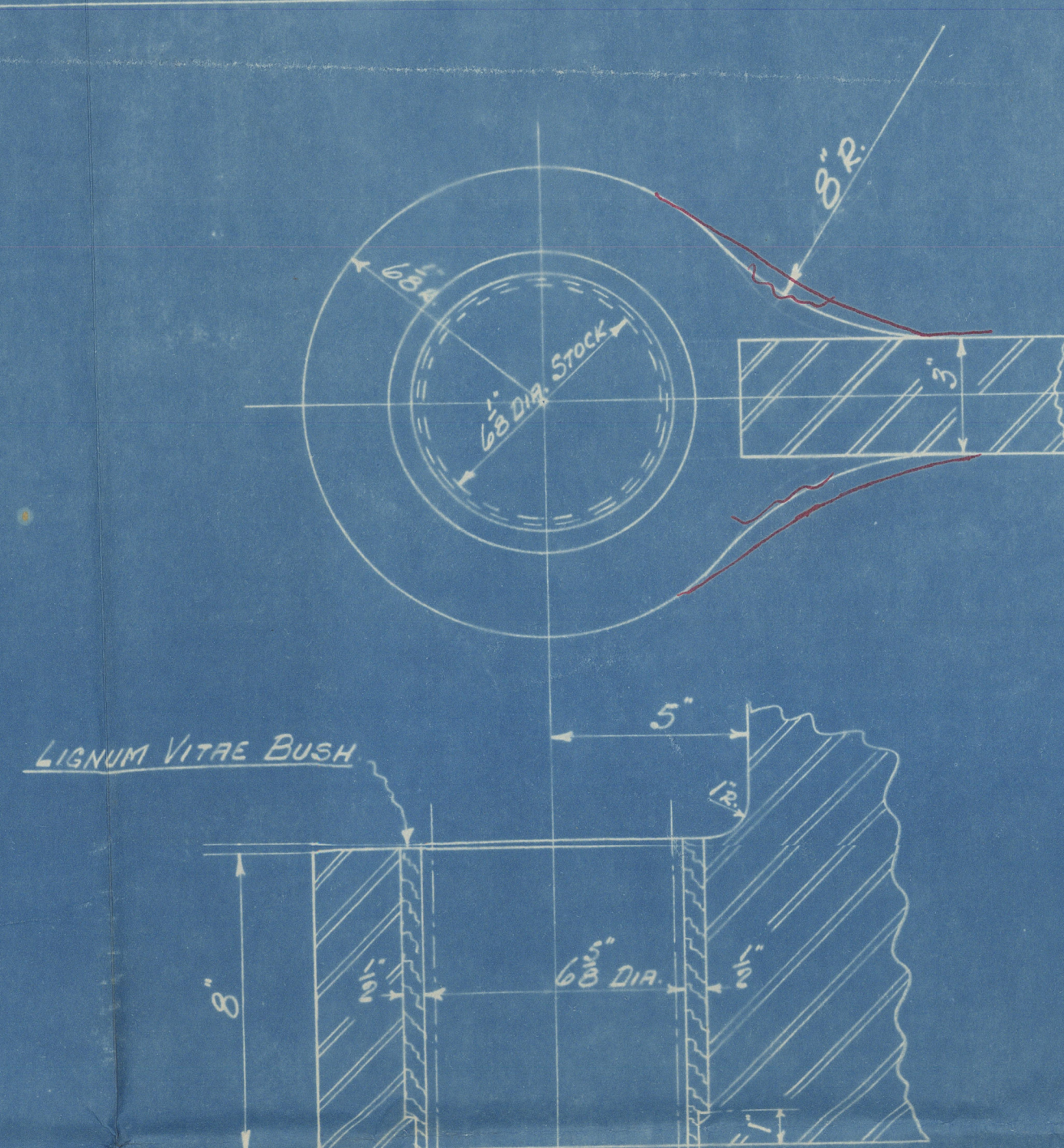
DIA. OF RUDDER HEAD (10% INCREASE FOR TANKERS) 4 1/8" DIA.



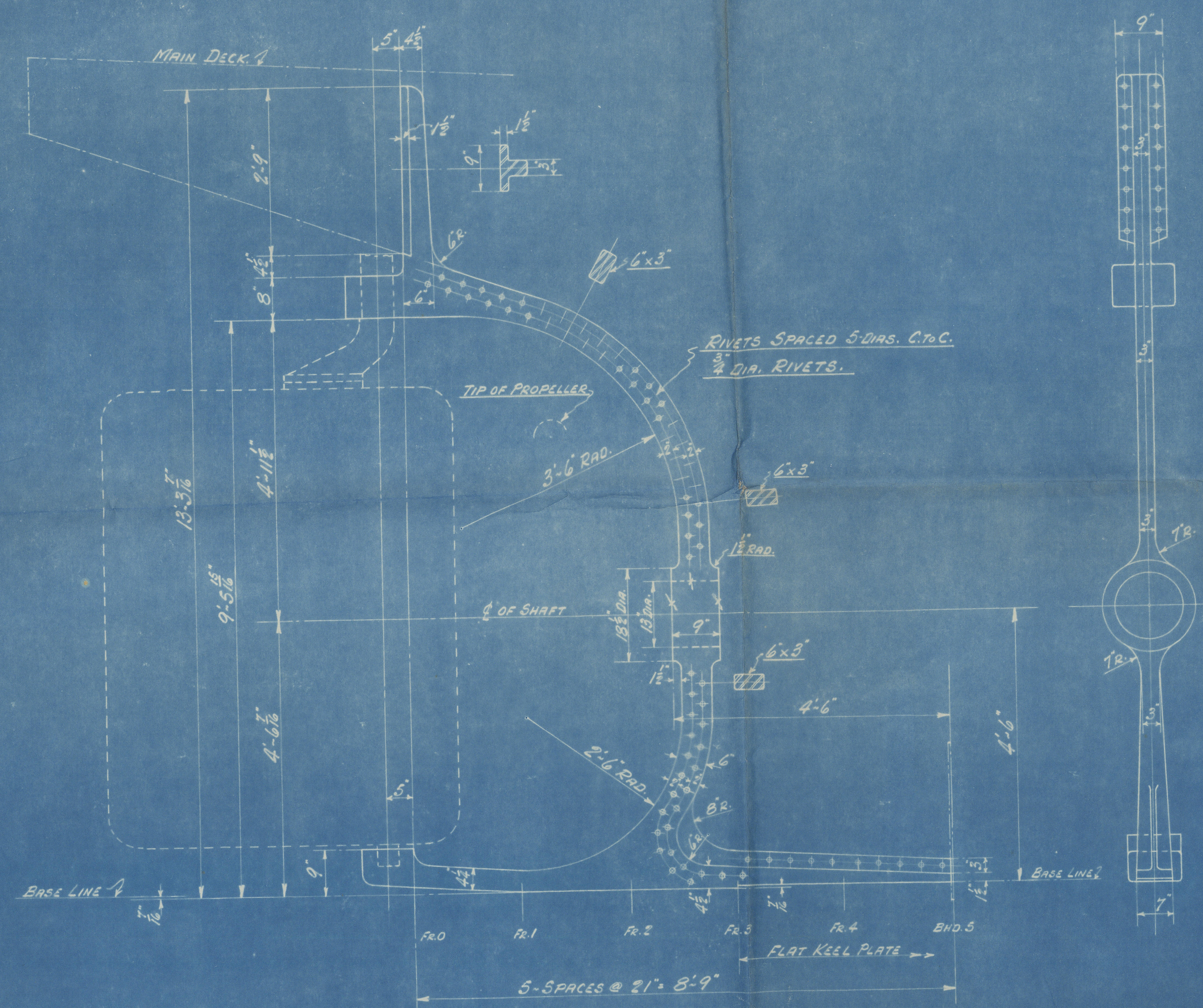
SCALE: 1 1/2" PER FOOT



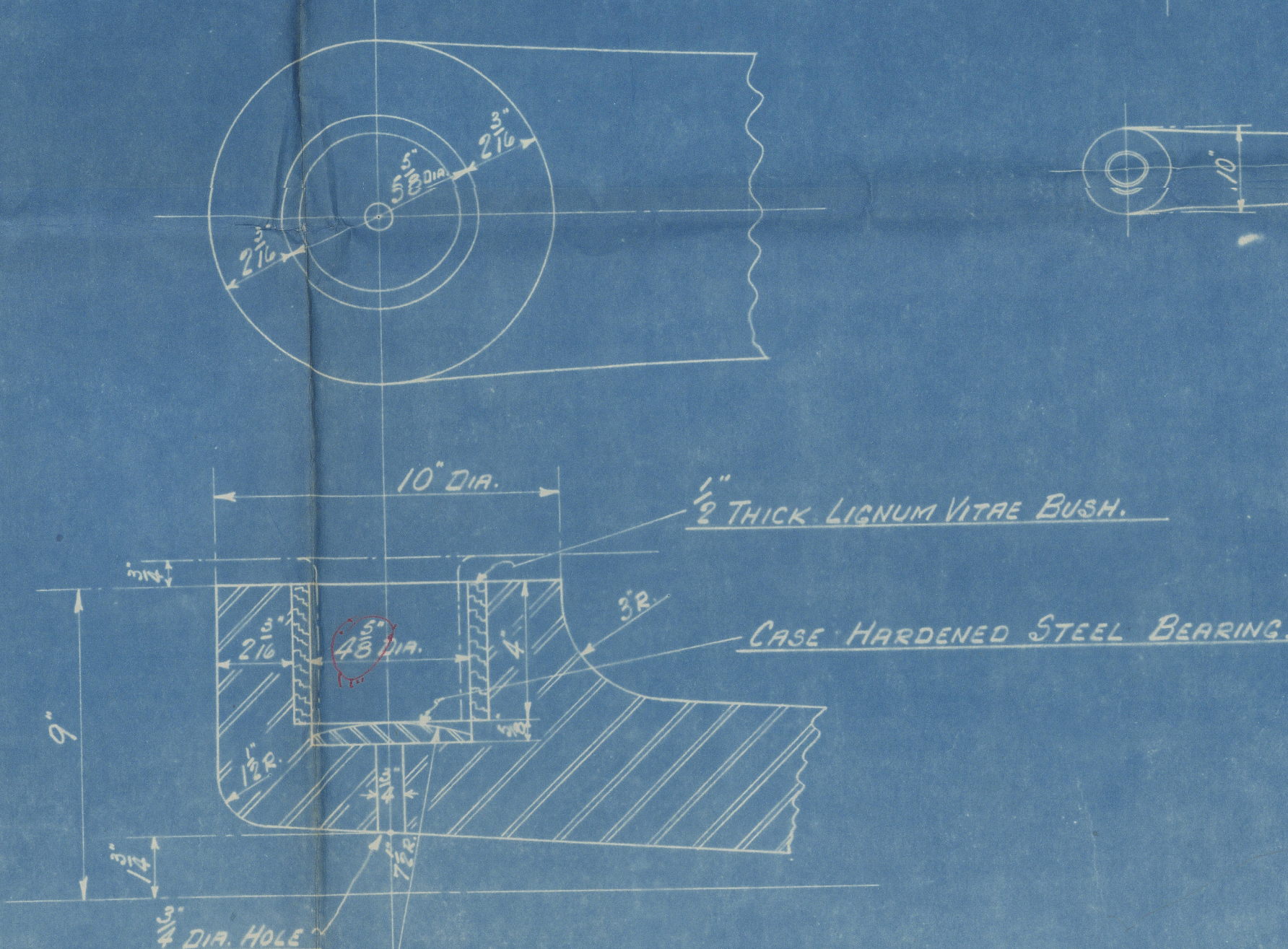
~ COUPLING BOLTS ~
 SCALE: HALF SIZE



~ TOP GUDGEON ~
 SCALE: 3" 1" 0"



SCALE: 3/4" PER FOOT



~ BOTTOM GUDGEON ~
 SCALE: 3" 1" 0"

~ STERN FRAME ~

MATERIAL: STEEL CASTING.
 MATERIAL TO LLOYD'S AND CANADIAN STEAMBOAT INSPECTION.
 TEST PIECES TO BE CAST WITH MATERIAL.

ALL EXPOSED EDGES OF FRAME TO HAVE ROUNDED CORNERS.
 ALL RIVETS COUNTERSUNK BOTH SIDES.

Imperial Machinery
 "Beesedile"
 Marine Industries Ltd.
 Yard No. 56
 Montreal, Canada

APPROVED
 JUL 27 1937
 LLOYD'S REGISTER OF SHIPPING
 NEW YORK

MANSEAU SHIPYARDS LTD.
 SOREL QUE.

~ RUDDER & STERN FRAME ~
 12T-6 WELDED OIL TANKER.

DRAWN BY: [Signature]
 CHECKED BY: [Signature]
 CONTRACT NO. 56

APPROVED: [Signature]
 DATE: 13-7-37
 SCALE: AS NOTED
 DRAWING NO. 56-12