

11/7/24
N^o 952-3 SHIPS

STERN FRAME & RUDDER

SCALE 1/2" = 1 FOOT

LENGTH B.P. 280'-0" * BREADTH MLD 47'-0" * DEPTH MLD 16'-6"

STERN FRAME OF FORGED STEEL

RUDDER FRAME & ARMS OF FORGED STEEL

RUDDER ARMS SHRUNK ON & KEYED TO MAINPIECE

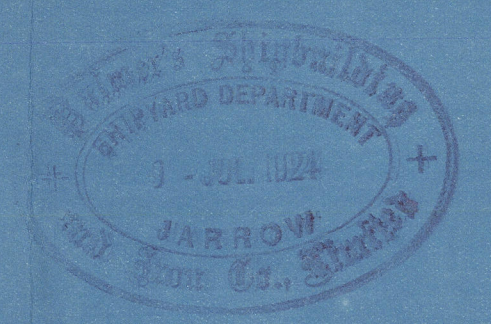
TOTAL AREA OF RUDDER TO COUPLING = 69.4 sq ft

C^{RE} OF GRAVITY ABAFT C^{RE} LINE OF PINTLES = 2.99

SPEED OF SHIP = 10 KNOTS

LLOYDS N^o A * D = 69.4 * 2.99 = 207.5

DIA OF RUDDER HEAD (BY RULE = 6 3/4") + 1/2" = 7 1/4"

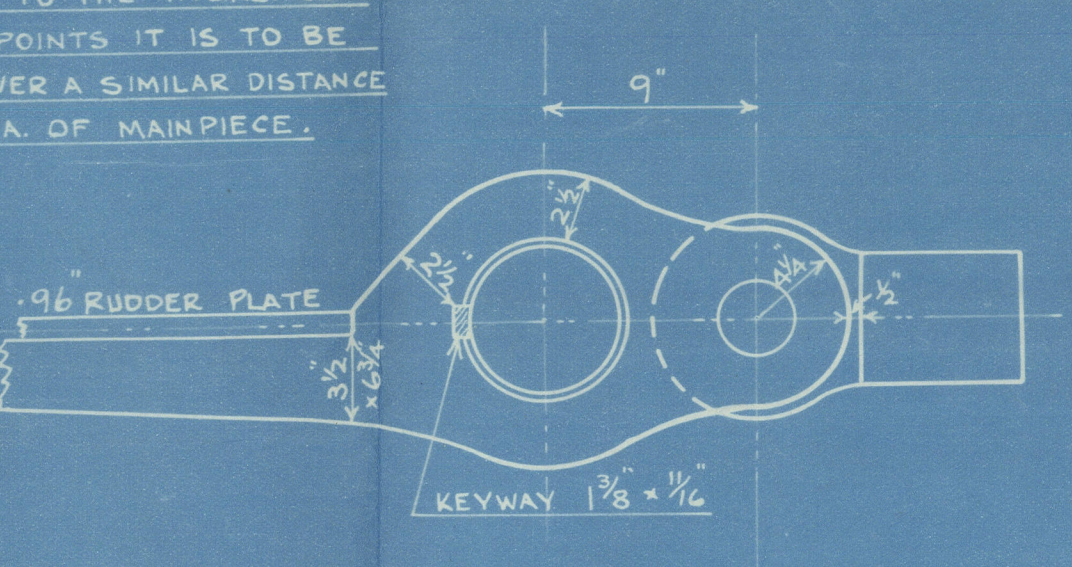
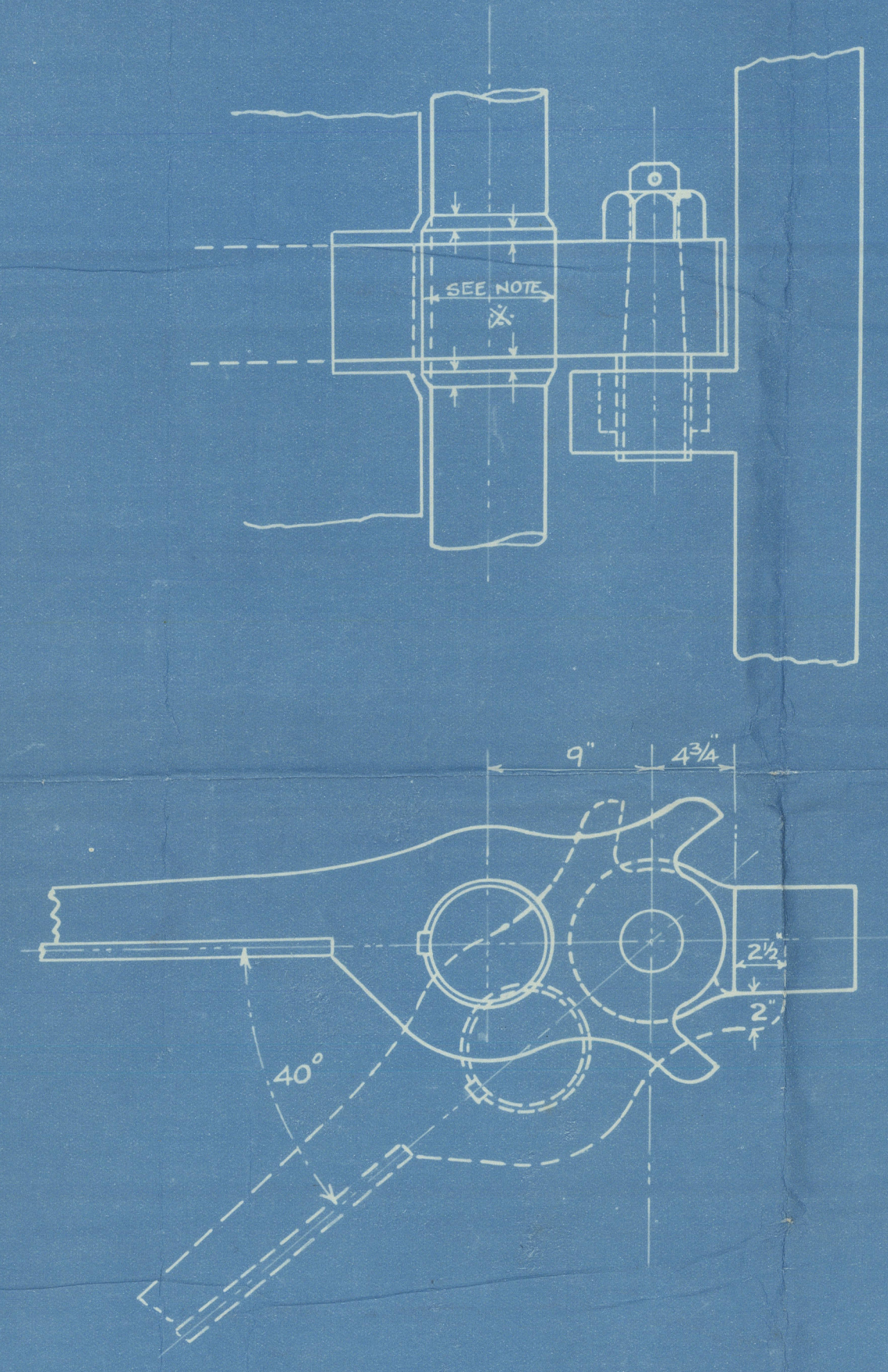
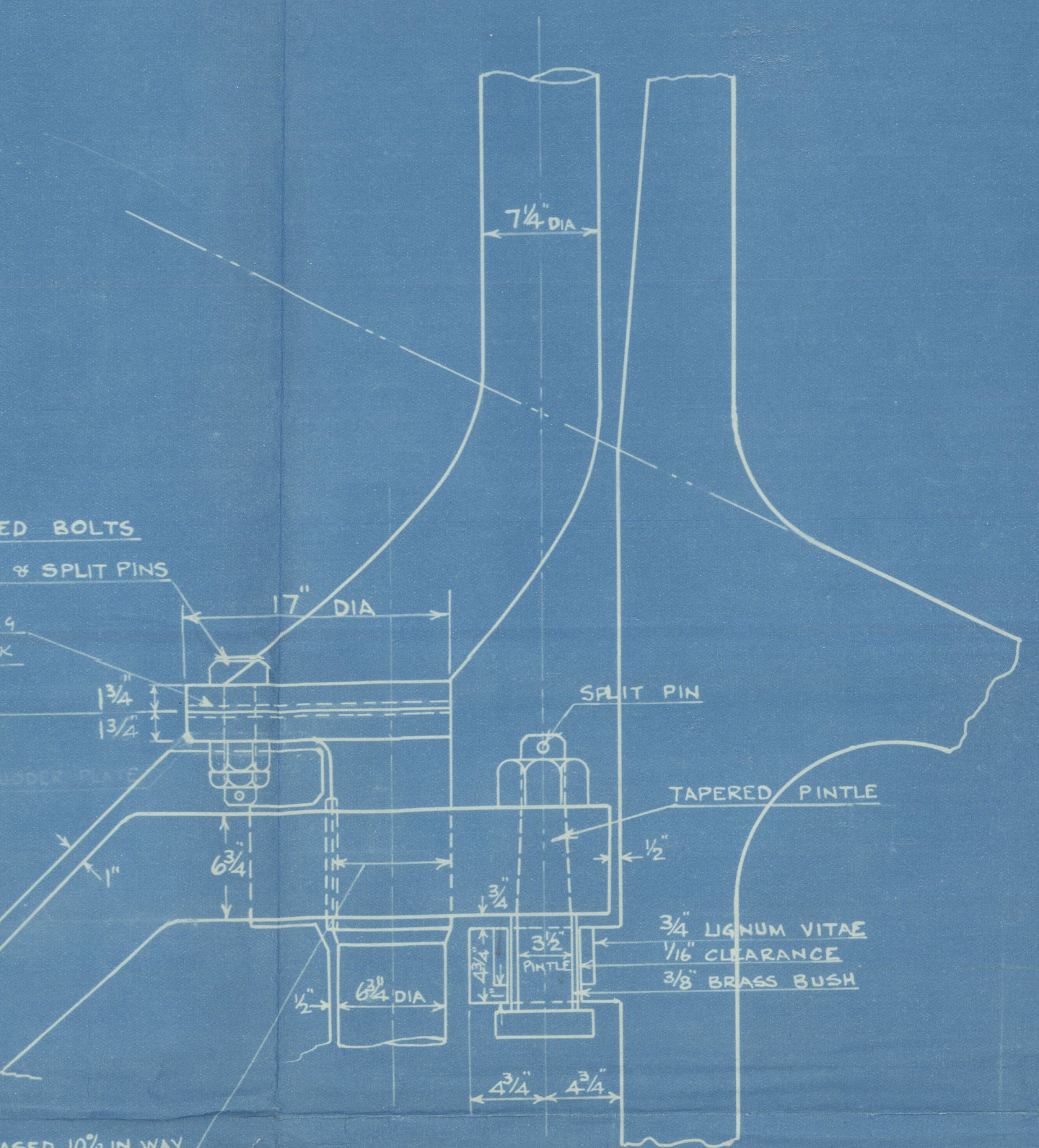
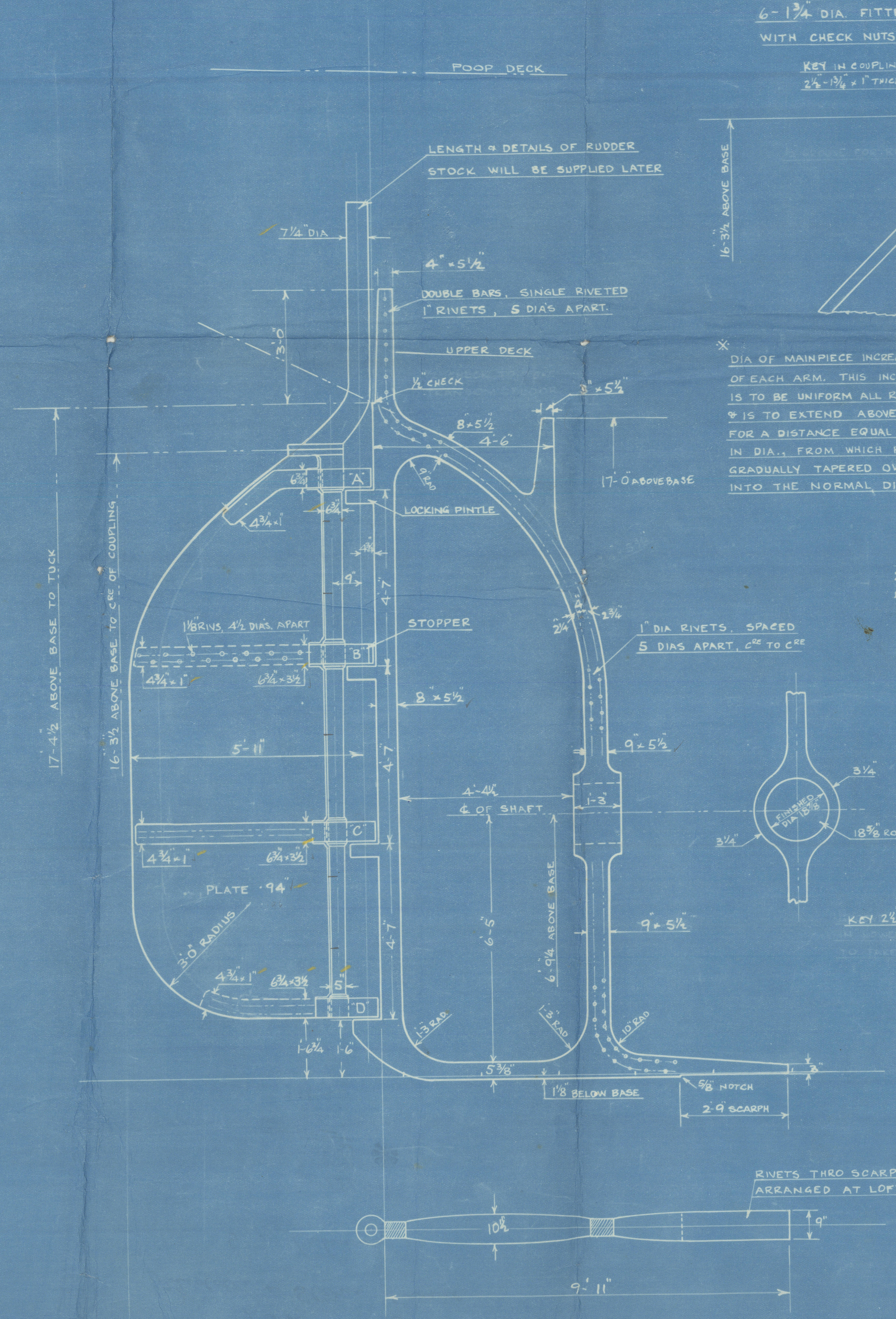


DETAIL OF COUPLING & GUDGEON AT "A" & "C"

SCALE 1/2" = 1 FOOT

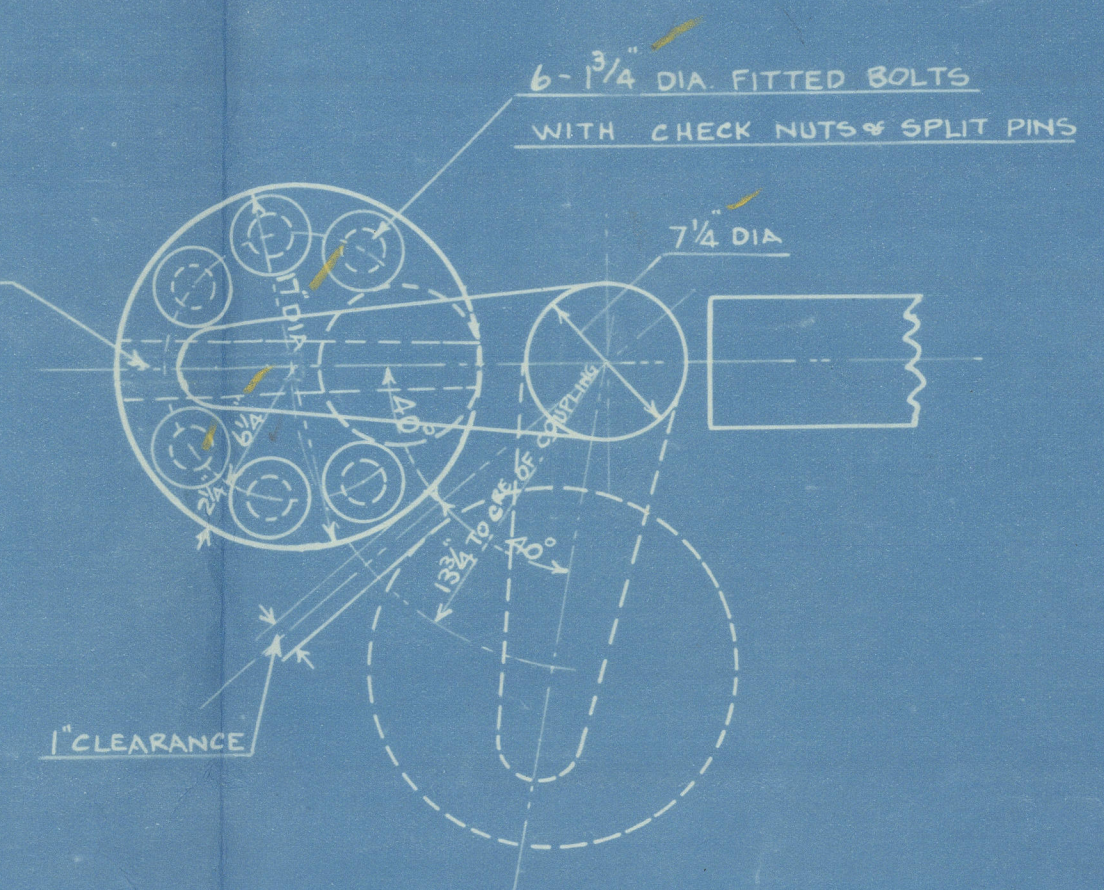
DETAIL OF STOPPER AT "B"

SCALE 1/2" = 1 FOOT



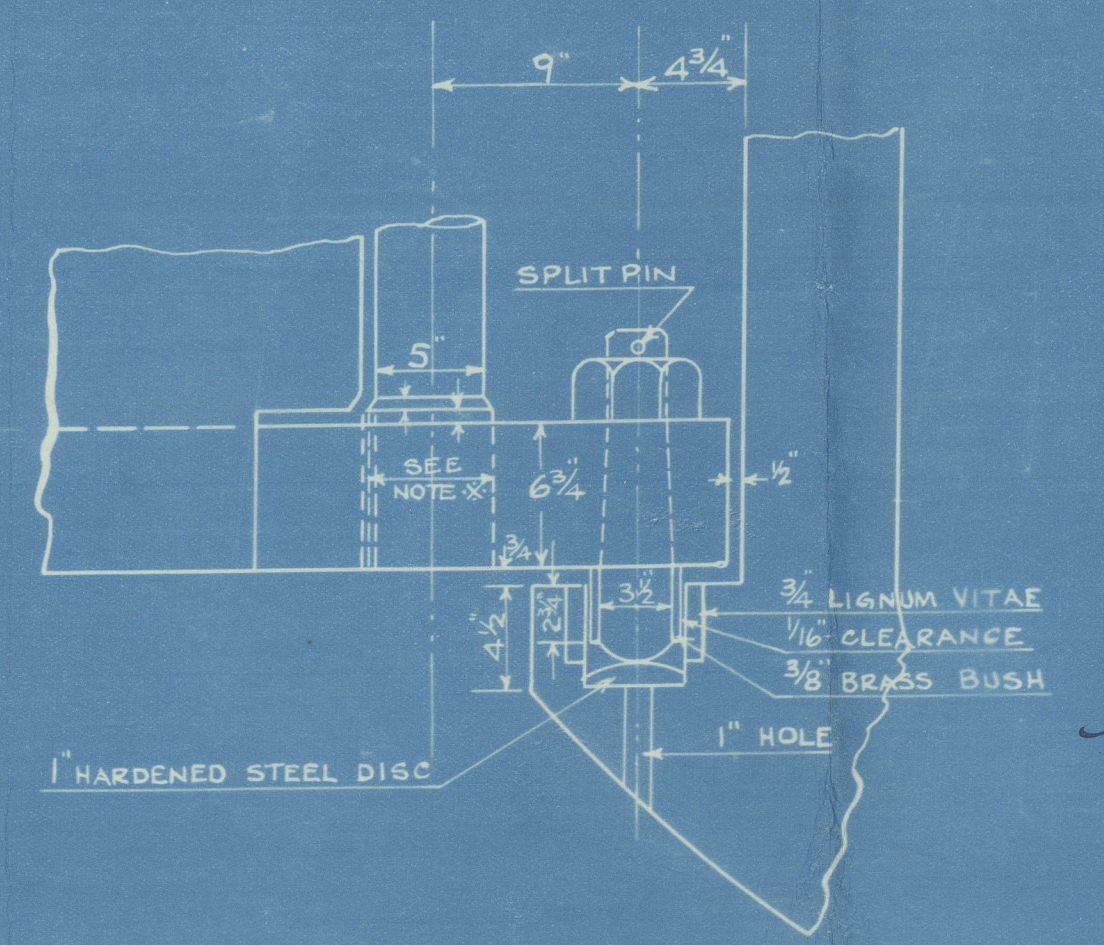
PLAN SHOWING CLEARANCE FOR UNSHIPING RUDDER

SCALE 1/2" = 1 FOOT



DETAIL OF BOTTOM GUDGEON "D"

SCALE 1/2" = 1 FOOT



11.7.24

No 5

Palmer's

952 . 953 and 960-961

Rudder + Stern - Frame

S. S. Bahamas

NEWCASTLE ON TYNE

Report No.

78676

S. S. Parana

S. S. PARAGUANA



NEWCASTLE ON TYNE.

Report No. 78829

S. S. ZAPARA

NEWCASTLE ON TYNE.

Report No. 80380

S. S. TOAS

NEWCASTLE ON TYNE.

Report No. 80423



© 2020

Lloyd's Register
Foundation