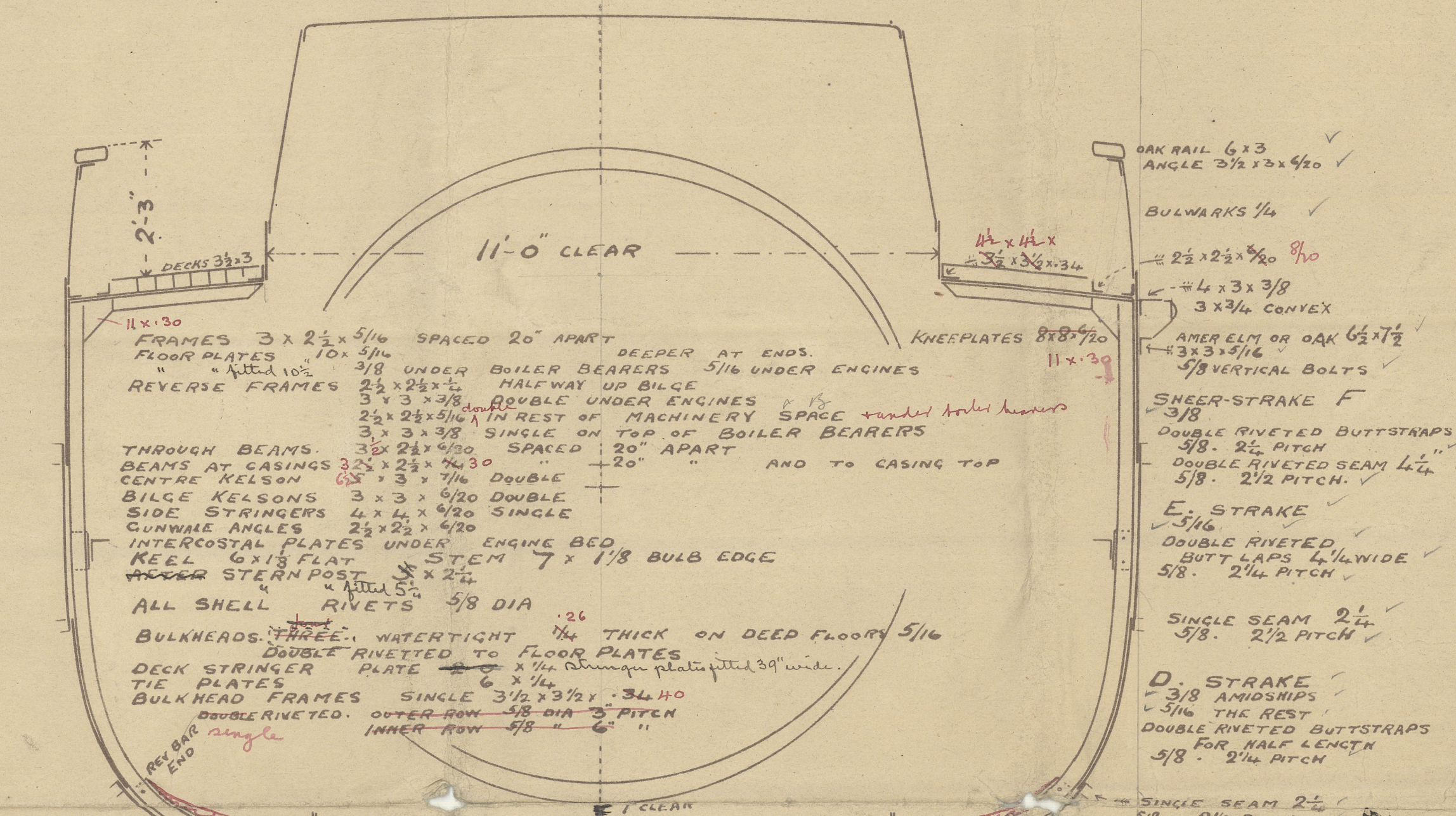
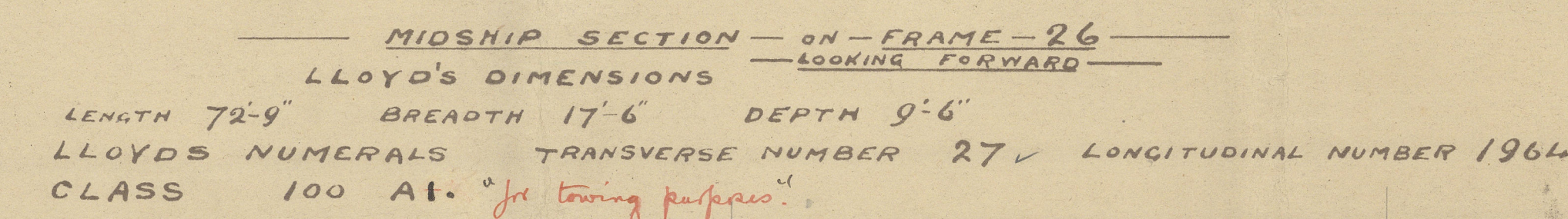


SCREW TUG - "TYKE" - FOR MESSRS JOHN A SCOTT LTD - OF HULL - YARD NUMBER - 231 -

	— DIMENSIONS —		
LENGTH	71-8	INSIDE OF STEM	2 ST POST
	77-8	OVERALL	
BREADTH	17-6	MOULDED	
DEPTH	9-6	MOULDED	AMIDSHIP
	12-6	"	EACH END



RIVET SPACINGS

GUNWALL ANGLES $\frac{5}{8}$ DIA. 2 PITCH
 WATERWAY $\frac{3}{8}$ 3/4"
 DECK BUTLAPS $\frac{3}{8}$ 2 1/2"
 FRAME REVERSE $\frac{3}{8}$ 2 COORS. KELSEY &
 BEAMS $\frac{3}{8}$ 1 1/2"
 BULKHEAD SEAM $\frac{3}{8}$ 2 3/4"
 STIFFENERS $\frac{3}{8}$ 2 3/4"
 BUNKER SEAMS $\frac{3}{8}$ 2 3/4"
 A. STRAKE $\frac{3}{8}$ THICK
 DOUBLE RIVETED BUTLAPS $\frac{3}{8}$ 2 1/2 PITCH
 KEEL DOUBLE RIVETED BUTLAPS $\frac{3}{8}$ 2 PITCH
 STEM PLATE $\frac{3}{8}$ ABOVE KEEL BOTTOM
 STEGION FRAME $\frac{3}{8}$ RIVETS
 EACH ROW $\frac{3}{8}$ PITCH
 ROWS 2 1/2" APART

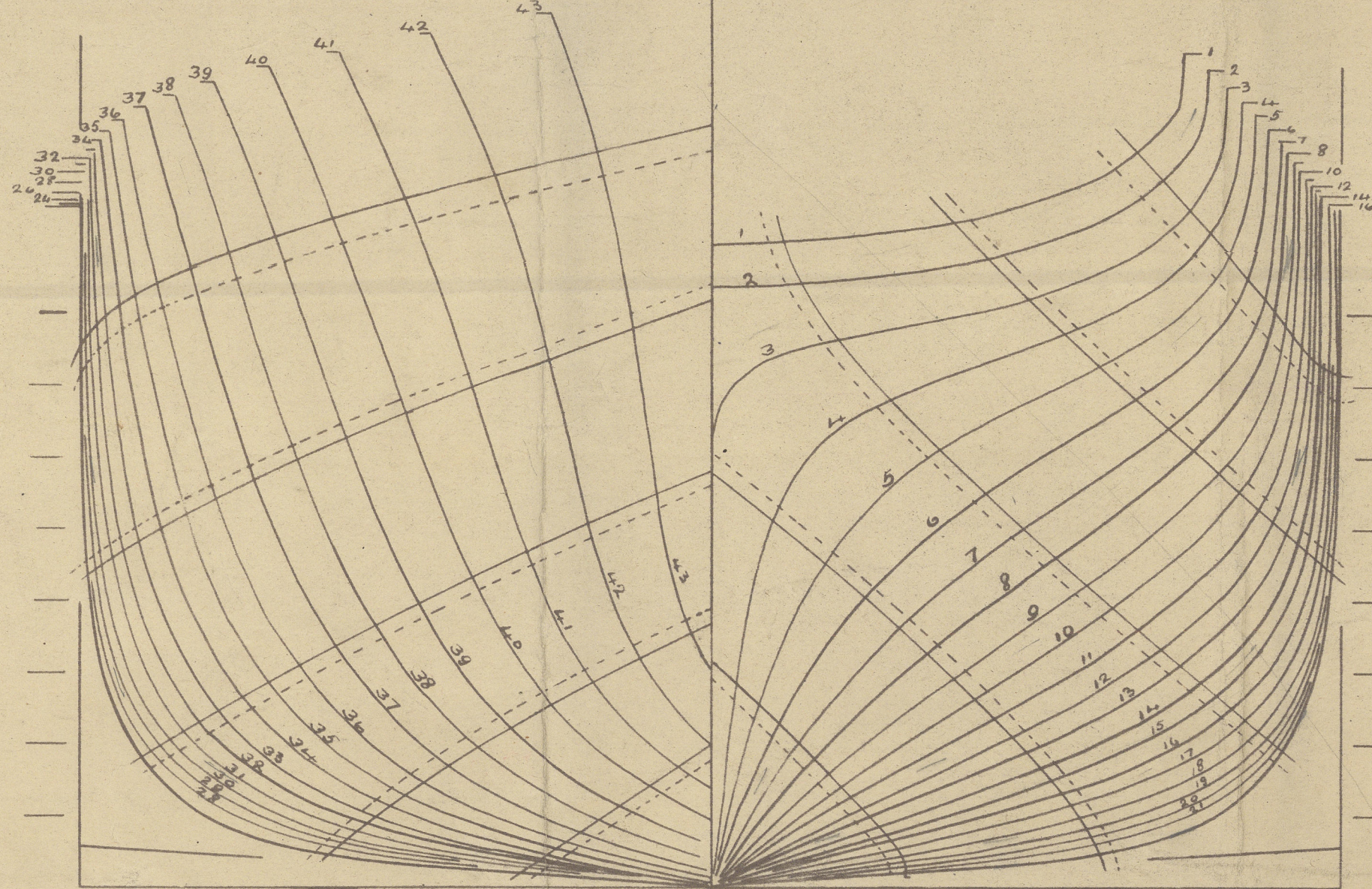
PLATE END BUTTS BETWEEN FRAMES

A	STRANE. PORT.	6.7	13-14	20.21	27.28	34.35	
B	"	8.9	15-16	22.23	29.30	36.37	
C	STARBD.	4.5	11-12	18.19	25.26	32.33	39.40
D	"	2.3	9-10	16-17	23.24	30.31	37.38
E	"	7.8	14-15	21.22	28.29	35.36	41-42
F	"	5.6	12-13	19.20	26.27	33.34	40.41
G	"	1.2	9-10	16-17	23.24	30.31	37-38

DRAWN APRIL 1913
W. L. Scarv.

42 } arrangement
of letters &
Savigny
satisfactory

ARW
9.4.13.



Henry Dean ^{L^o}

No. 231

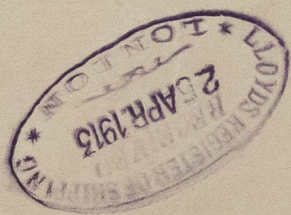
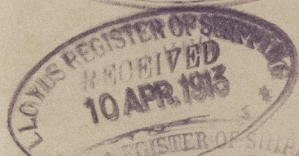
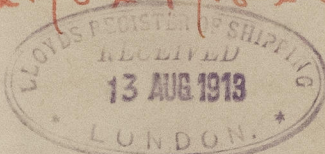
S.S. "Jayke".

Hull Rph No. 27167.

Midship Section, Profile

and Deck Plan;

42.45' x 14.5' x 9.5'.



007139-007149-0018



© 2020

Lloyd's Register
Foundation



8100-14100-0018



© 2020

Lloyd's Register
Foundation

LLOYD'S REGISTER
OF SHIPPING.
Q - APR 1913
HULL

007139-007149-0018



© 2020

Lloyd's Register
Foundation