





Do all the Frames extend to the top height in the Poop? *Yes* Raised Quarter Deck? *✓* Bridge House? *Yes* Forecastle? *Yes*  
 To what height do the Reverse Frames extend? *Bulk angles fitted*  
 Has the Poop or Raised Quarter Deck an efficient Iron Bulkhead at the fore end? *Yes*  
 Give particulars of the means for closing the openings in Bulkhead *Iron H.T. Doors.* *✓*  
 Is the Poop or Raised Quarter Deck connected with the Bridge House? *No* Has the Bridge House an efficient Bulkhead at the fore end? *Yes*  
 Give particulars of the means for closing the openings in Bulkhead *Steel H.T. Doors* *✓*  
 What is the thickness of the Bridge Front plating? *.40* and Coaming plate? *.44*  
 Give scantlings and spacing of the Stiffeners *8 x 3 1/2 x .66 BAs stiffeners 80" spacing* *✓*  
 Are bracket plates fitted at each end of the Stiffeners? *Yes* Are hor'l. brackets fitted connecting Bridge Bulk'd. with Bulwarks? *Yes*  
 Has the Bridge House an efficient Iron Bulkhead at the after end? *Yes*  
 How are the openings closed? *Channels fitted to take wood battens, extending to a height of 6'-0" above deck.* *✓*  
 Is the Forecastle at least as high as the main or top-gallant rail? *Yes* Has the Forecastle an efficient Iron or Wood Bulk'd. at after end? *Yes*  
 Are the Engine and Boiler openings covered by a Bridge, Poop, Raised Quarter Deck, or enclosed by a Strong Iron or Steel Deckhouse? *Covered by Bridge.* *✓*  
 If the openings are not so protected are the exposed parts of the Casings efficiently constructed? *✓*  
 Give thickness of plating; scantlings and spacing of Stiffeners *✓*  
 What is the height of the exposed Casings? *✓* Are suitable means provided for closing all openings in them in bad weather? *✓*  
 Are the Weather Deck Hatchways efficiently constructed and at least equal to the requirements of Section 28 of the Rules for 1904-5? Give particulars below:— *Yes* *✓*

Position and Size.		N <sup>o</sup> 1. 29'-9" x 20'-0"		N <sup>o</sup> 2. 34'-0" x 20'-0"		N <sup>o</sup> 3. 34'-0" x 20'-0"		N <sup>o</sup> 4. 29'-9" x 20'-0"			
Item.		Ship.	Rule.	Ship.	Rule.	Ship.	Rule.	Ship.	Rule.	Ship.	Rule.
COAMING.	Height above top of DECK	36"	5.1	36"		36"		36"	20'-		
	Thickness { Sides.....	.50	4.2	.54		.64		.50			
	{ Ends.....	.44		.44		.44		.44	8.5		
SHIFTING BEAMS OR WEB PLATES.	Number .....	5		6		6		5			
	Section and Scantlings .....	PLATE 36x18x9"		Do		Do		Do			
	Material .....	STEEL 4 ANGLES 4x3x.44		Do		Do		Do			
* FORE AND AFTERS.	Number .....										
	Section and Scantlings .....	NONE		NONE		NONE		NONE			
	Material .....										
HATCHES Thickness		Wood 2 1/2		2 1/2		2 1/2		2 1/2			
Remarks.....		7 1/2 x 3 1/2 x .44 B.A. FITTED AROUND SIDES & ENDS WITH BRACKETS TO DECK.									

\* The depth of Fore and Afters should be stated from the underside of the hatches in all cases.

(If the sill of the lowest side scuttle will be less than 6 inches above the Indian Summer Load Line if assigned under the tables, state vertical distance from top of deck at side amidships to lower edge of lowest side scuttle.)

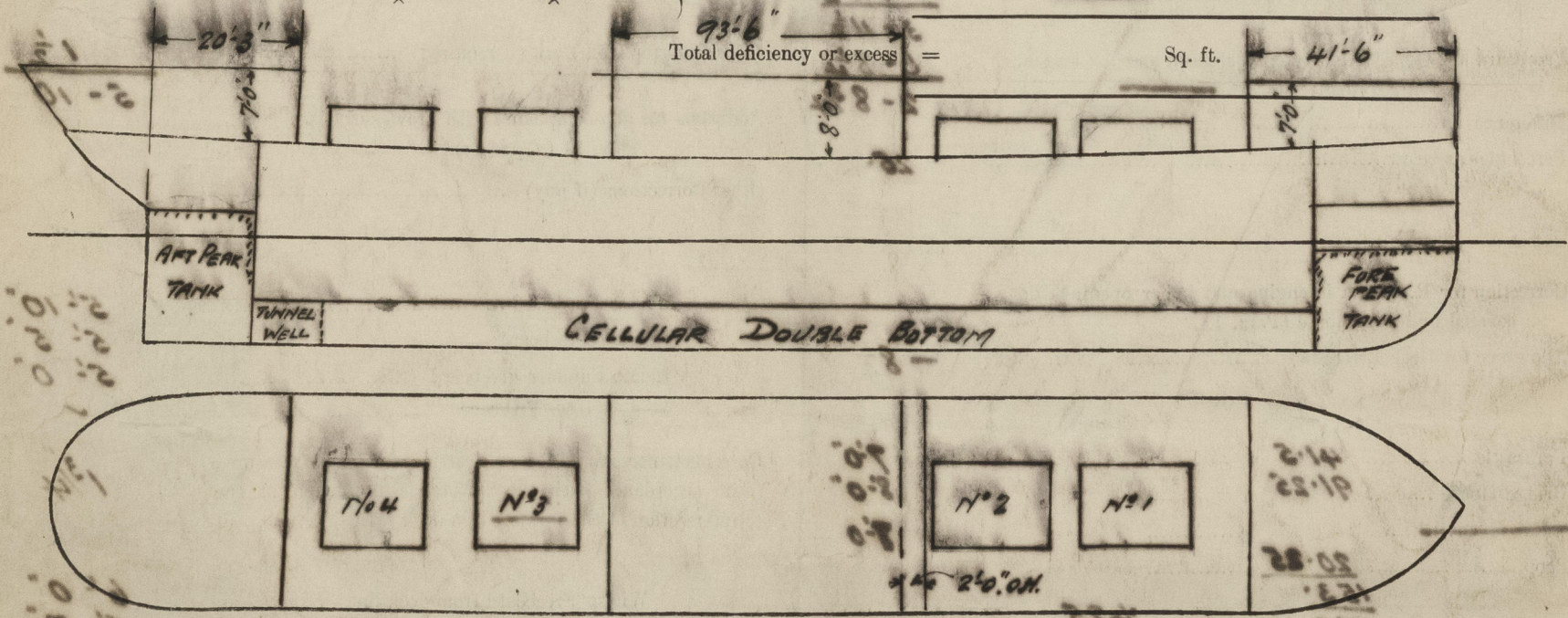
The following information is to be given in all Cases of vessels dealt with under Paras. 11, 12 (under 15 feet Moulded depth) and under Shelter Deck Rules.

What is the thickness of the Bridge Sheerstrake? *✓* Strake between Main and Bridge Sheerstrakes? *✓*  
 Delete the words { The Crew are, are not, berthed in the bridge house.  
 that do not apply { The arrangements to enable them to get backwards and forwards from their quarters are, are not satisfactory.

Length of Bulwarks in well

Area of Freeing Ports required by Para. 11 (e) each side of vessel = Sq. ft.

Ft. Tenths.    Ft. Tenths.    No.    Freeing Ports (each side of vessel) = Sq. ft.



Show hereon line of Floors or Tank Top with position of any Breaks in same; also height of Peak Tank tops, &c., &c.

State any special features in the construction of the Vessel *Tank top runs straight out to side, shell plating fitted with bilge pockets.*

Owners *Nippon Yusen Kaisha*  
 Address *Yurakucho Ichome Kojimachi Tokyo.*  
 Fee *YEN 120:-*  
 Received by me *25/9/20 H.D. Buchanan.*