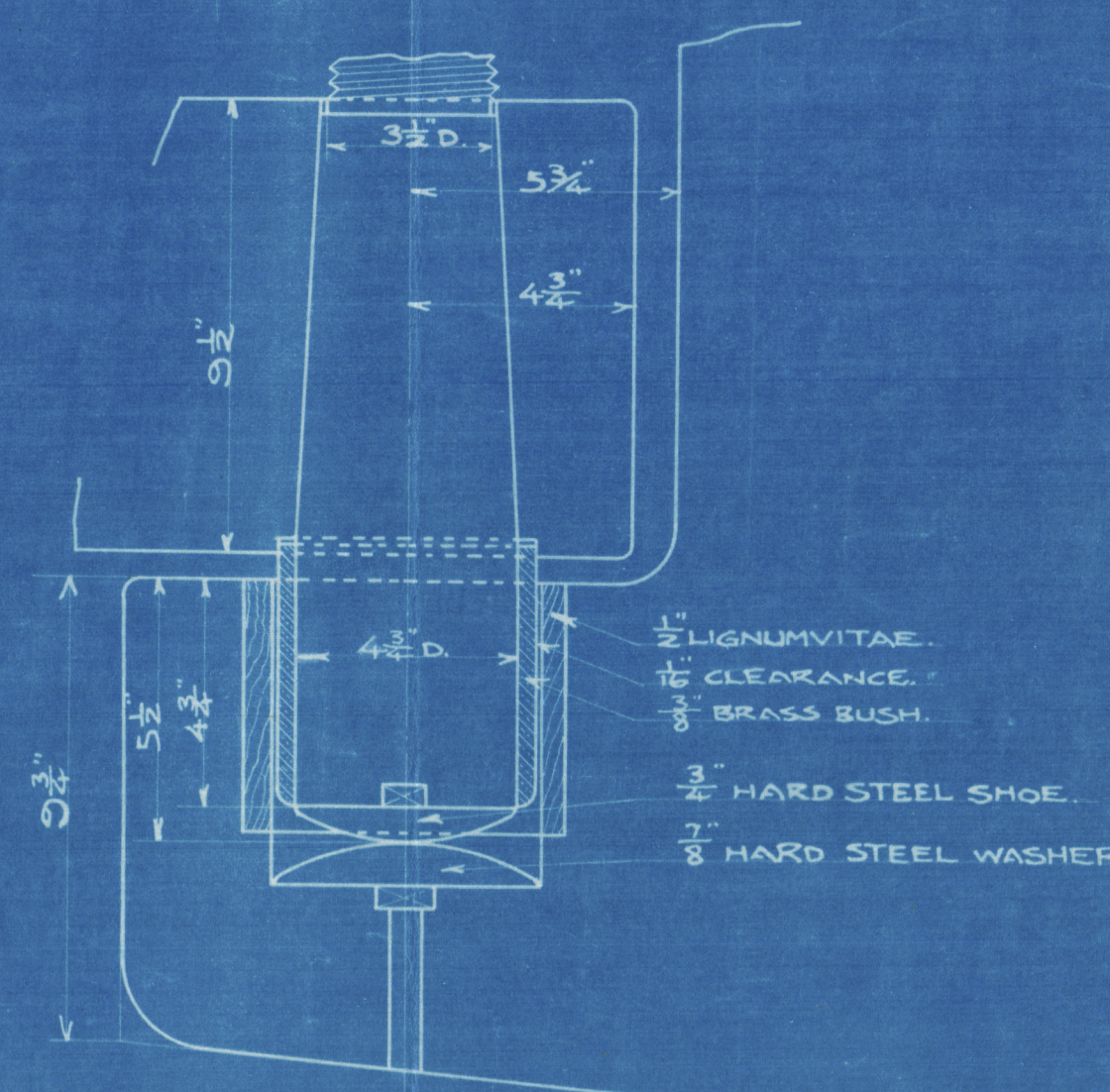
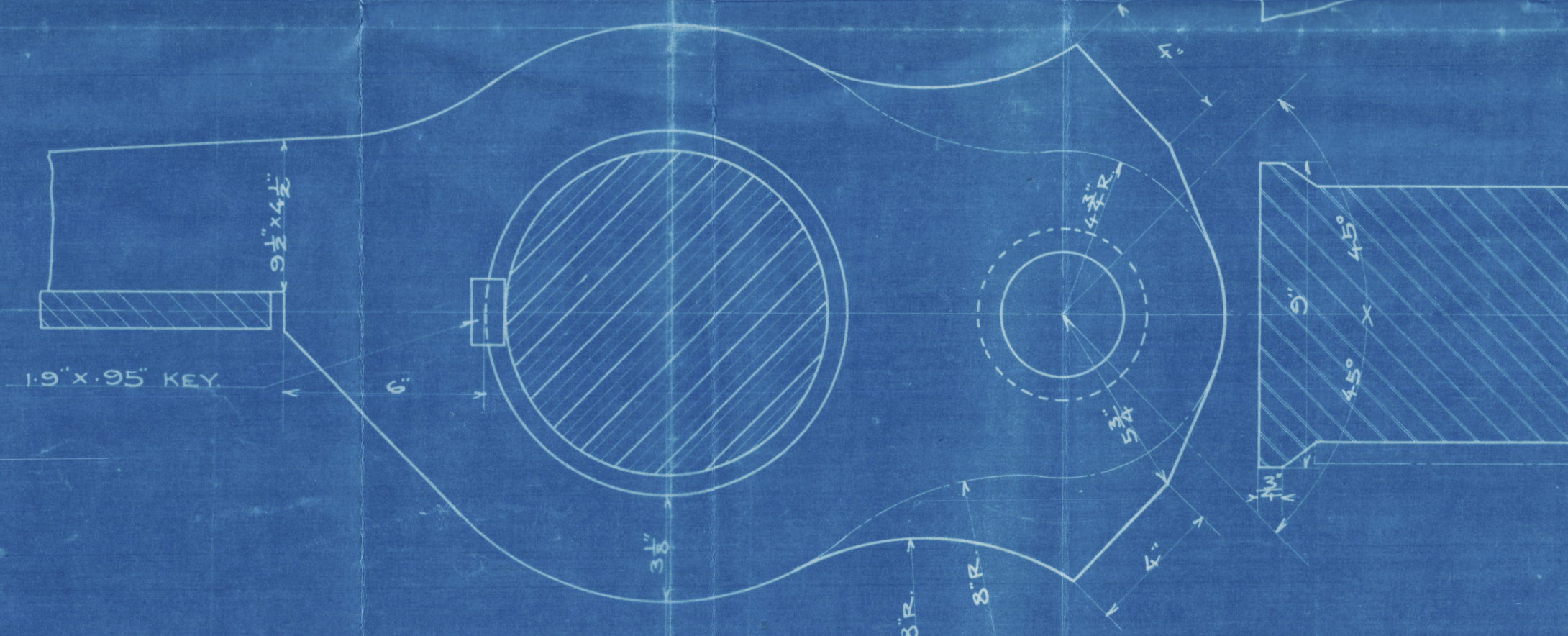
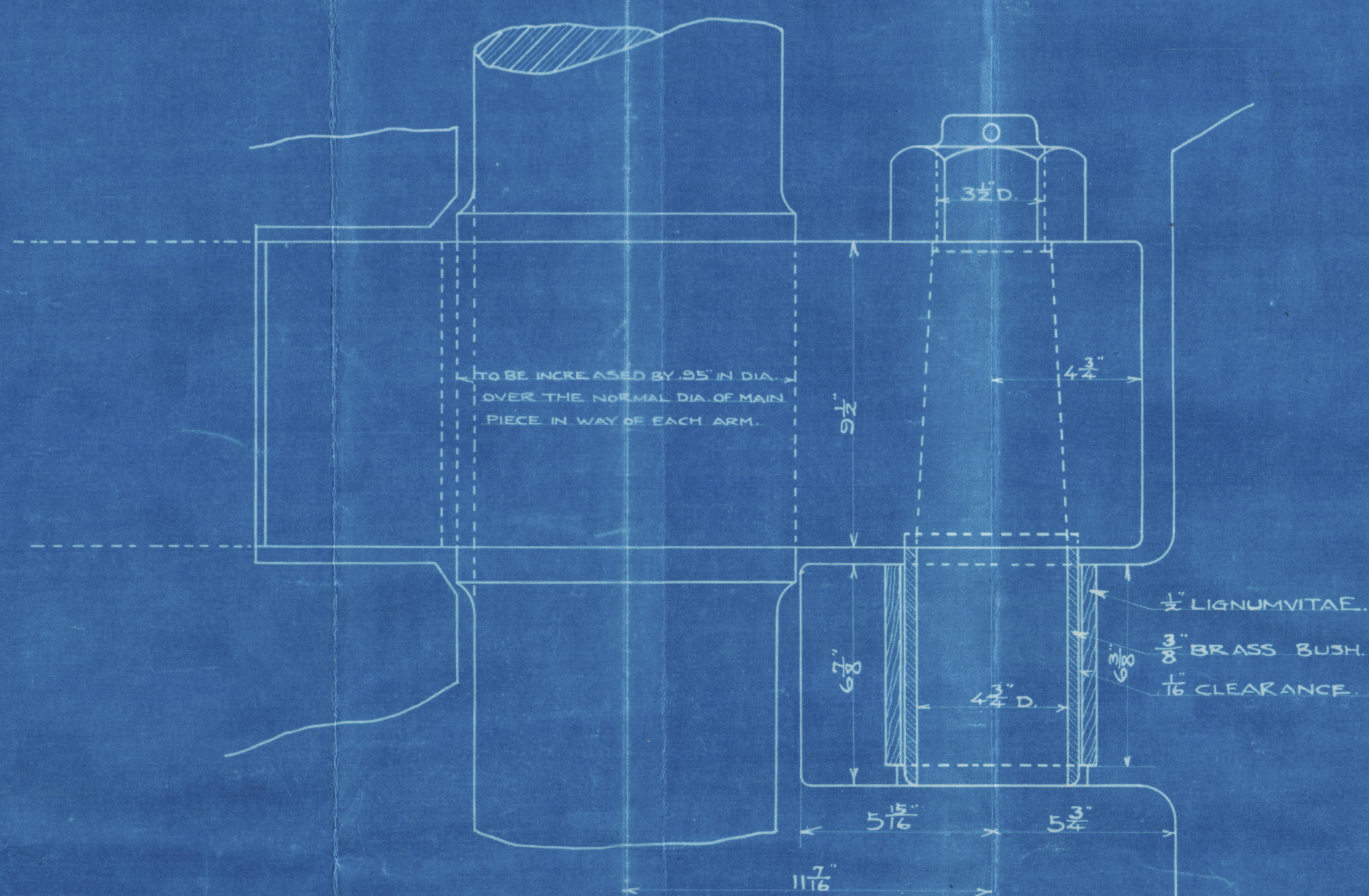
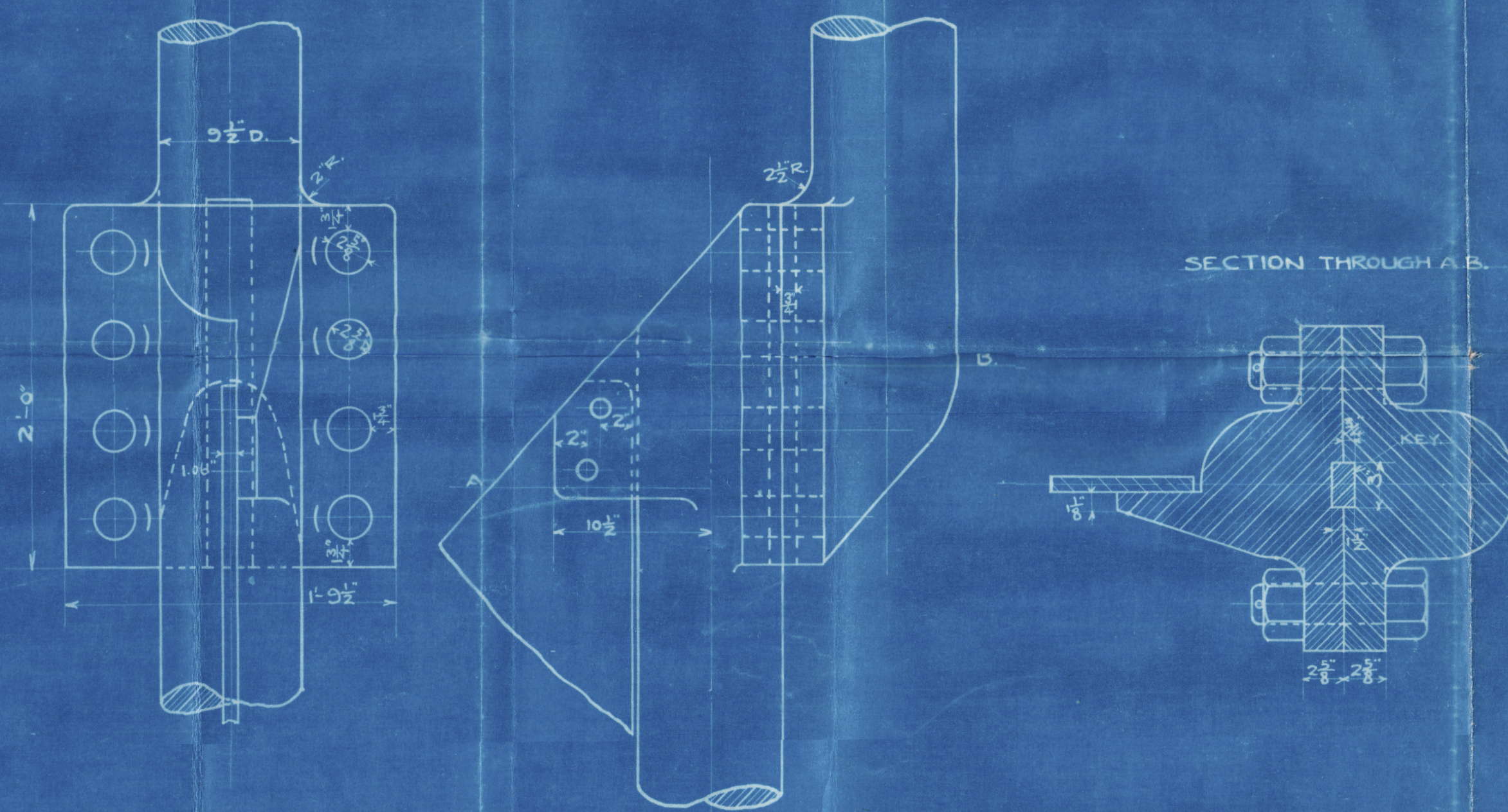


S.S. MURORAN MARU.

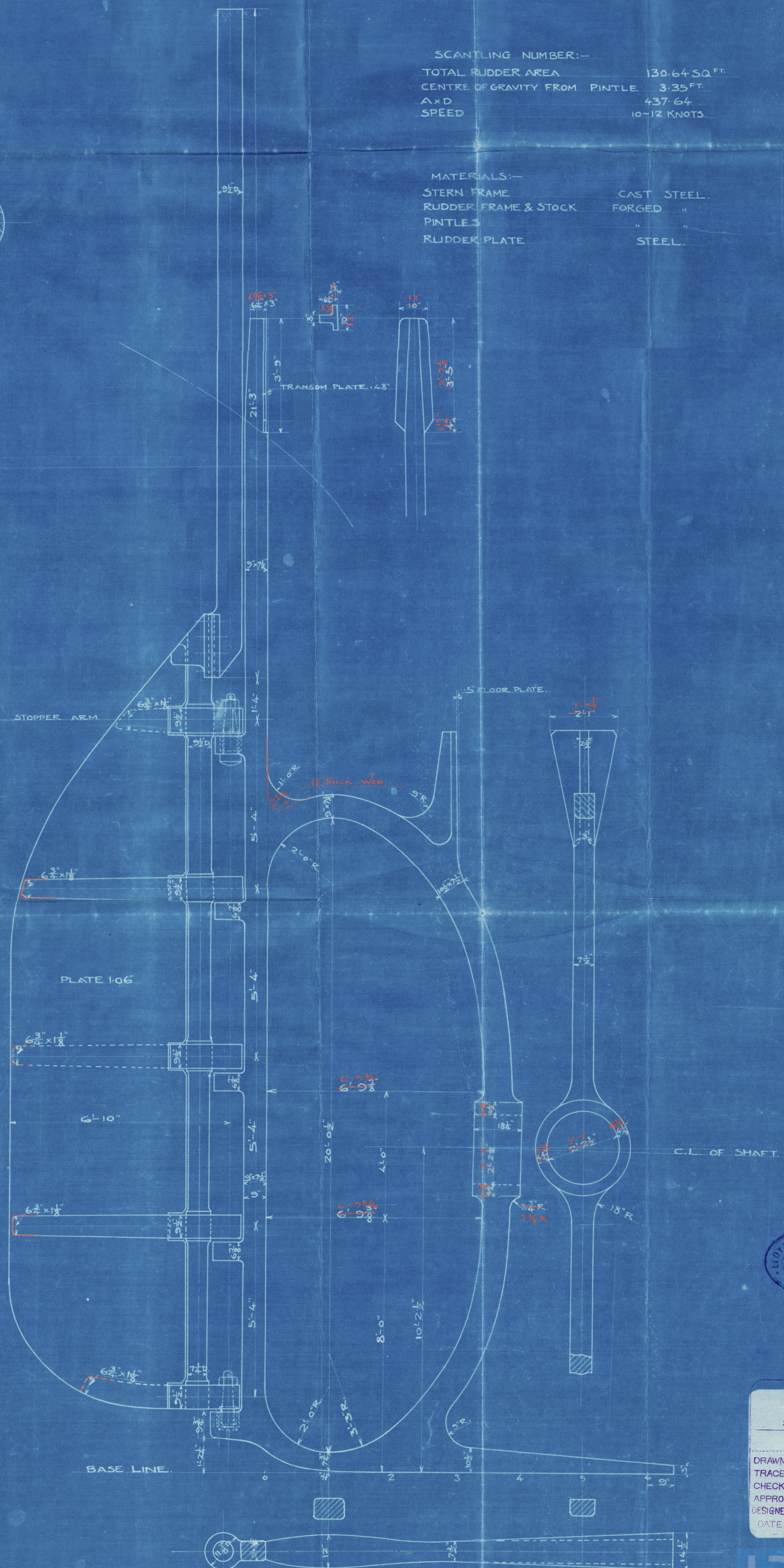
RUDDER & STERN FRAME.

SCALE $\frac{1}{2}$ INCH TO ONE FOOT.
SCALE $\frac{1}{2}$ & 3 INCH TO A FOOT FOR DETAILS.

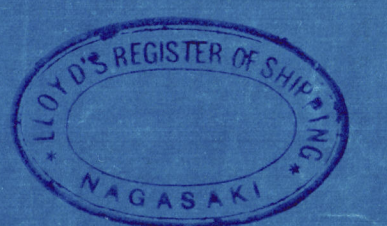


SCANTLING NUMBER:—
TOTAL RUDDER AREA 130.64 SQ. FT.
CENTRE OF GRAVITY FROM PINTLE 3.35 FT.
A x D 437.64
SPEED 10-12 KNOTS.

MATERIALS:—
STERN FRAME CAST STEEL
RUDDER FRAME & STOCK FORGED "
PINTLES " "
RUDDER PLATE STEEL.



SE Y



MITSUBISHI
ZOSEN KAISHA LTD.
NAGASAKI WORKS
SHIP DESIGNER'S OFFICE. A
DRAWN BY
CHECKED BY
APPROVED BY
DESIGNER'S OFFICE NO. 6560
DATE





Rudder & Stern Frame,

S. S. No. 279.

Mitsubishi Gasen Kaisha,

Yokohama Report No. 1264.

"Murotan Maru"
Wag. 1264.



© 2020

Lloyd's Register
Foundation

007088-007099-0152