

Rpt. C.11. **DISCLOSED SECTION**

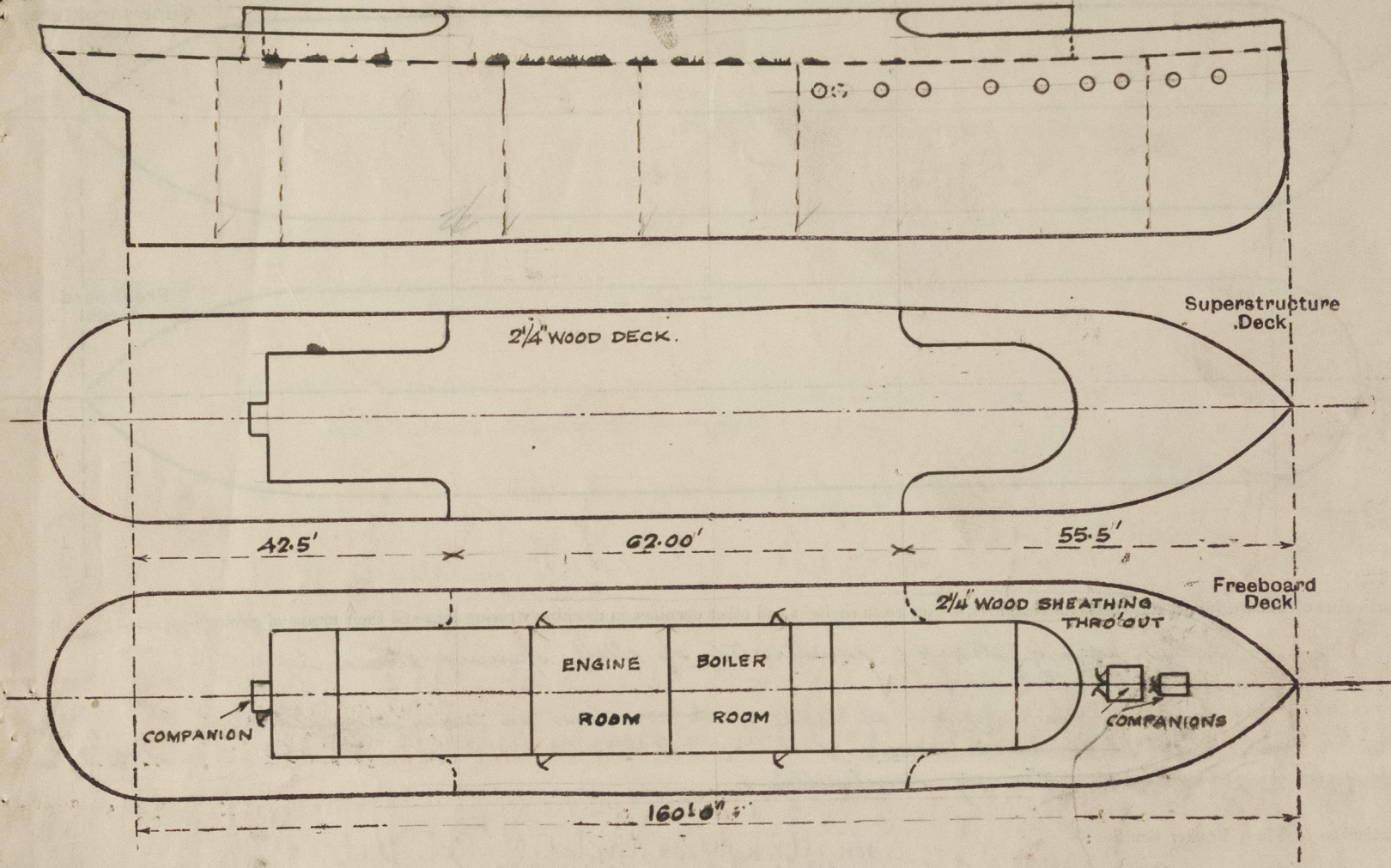
25 MAR 1946
Index No. 23698
(For London Office only)

Lloyd's Register of Shipping.
SURVEYS FOR FREEBOARD.
(CONDITIONS OF ASSIGNMENT.)

No. 424
Jhr 6223

Ship's Name **T.S.S. "ROBINA"** Port of Survey **LIVERPOOL**
Official Number **135726** Surveyor's Signature *Harish C. Murray*
Nationality and Port of Registry **BRITISH FALMOUTH** Date of Survey *16th, 19th & 21st March, 1946.*

Disposition and dimensions of superstructures, trunks, deckhouses and machinery casings to be inserted in the diagrams and tabular statement:--

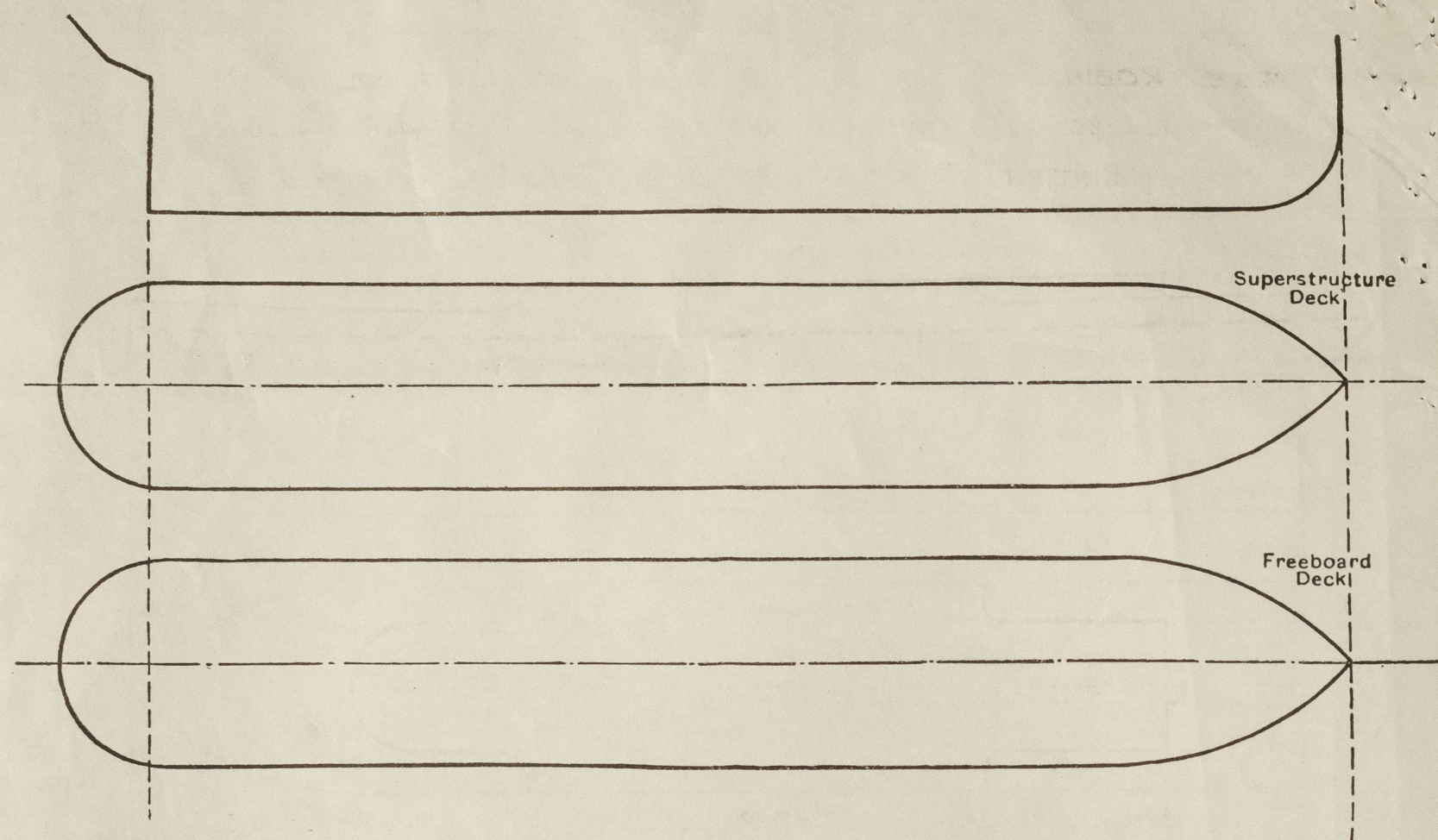


Particulars of Superstructures, Trunks, Casings, Deckhouses.								
	Coaming	Plating	Stiffeners	Spacing	End Attachments of Stiffeners	Size of Openings	Height of Sills	Height of Casings
Poop Bulkhead								
Raised Quarter Deck Bulkhead								
Bridge, After Bulkhead	OPEN							
Bridge, Forward Bulkhead								
Forecastle Bulkhead								
Trunk, Aft								
Trunk, Forward								
Exposed Machinery Casings on Freeboard or Raised Quarter Decks								
Exposed Machinery Casings on Superstructure Decks		26"				NONE		2.5'
Machinery Casings within Superstructures not fitted with Class I Closing Appliances30	.25	2 1/2 x 2 1/2 x 5/16"	27"	NONE	5'-0" x 2'-0"	13"	7.0'
Deckhouses on Flush Deck Ships								

Particulars of Closing Appliances (state if capable of being manipulated from both sides).	
Poop Bulkhead	
Raised Quarter Deck Bulkhead	
Bridge, After Bulkhead	OPEN ✓
Bridge, Forward Bulkhead	
Forecastle Bulkhead	
Exposed Machinery Casings on Freeboard or Raised Quarter Decks	
Exposed Machinery Casings on Superstructure Decks	
Machinery Casings within Superstructures not fitted with Class I Closing Appliances	No openings 2 Hinged tank doors to Engine Room 2 Hinged steel doors to Boiler Room } operated from both sides.
Deckhouses on Flush Deck Ships	

PARTICULARS OF PROTECTION TO OPENINGS, ETC.

The following diagrams should be used to indicate the positions of cargo and coaling hatchways, gangway, cargo and coaling ports, ventilators, companionways, etc., which would affect the seaworthiness of the ship:—



Particulars of fiddley, funnel and ventilator coamings, engine room skylight and other openings in machinery casing tops and their means of closing:—

Trailer casing strongly constructed of steel, opening closed by hinged steel cover. ✓
 Engine room skylight of teak with windows in sides provided with steel plate storm covers. ✓
 Ventilators strongly constructed. ✓

Particulars of Flush Bunker Scuttles:—

2 each side 14" diam. Iron, strongly constructed, bayonet joints.
1 off end with permanent chain attachments ✓
on bridge and piers ✓

Particulars of Companionways

One to crew space Hinged teak doors Sill $2\frac{1}{4}$ " high
 " " fore cabin " " $2\frac{1}{4}$ " high
 Each strongly constructed of teak
 One to after compartment in sickhouse. Hinged teak door, Sill 14" high.

} operated from both sides

- hinged teak secured in the door portion

Particulars of Ventilators in exposed positions on freeboard and superstructure decks :—

Swan neck ventilators on foreboard deck 6" diam. 7" to top.
Mushroom " " " " with screw down W.T. tops ✓
Efficient means of closing provided ✓

Particulars of Air Pipes in exposed positions on freeboard, raised quarter, or superstructure decks:—

Due to after peak 9" to lip.
Efficient means of closing provided ✓

Particulars of Gangway Cargo and Coaling Ports:—

NONE

Particulars of Scuppers and Sanitary Discharge Pipes :—

Open scuppers from freeboard deck, pipe thro' stringer & sheerstrake
Discharges from lavatories etc on freeboard deck led thro' ship's side
below freeboard deck & fitted with non return valves.

Particulars of Side Scuttles:—

9" diameter scuttles to forward accommodation
G.M. fitted with hinged deadlights ✓

- Vertical distance of Sill of lowest Side Scuttle above top of keel

Particulars of Guard Rails :—

4 Rails on Bridge deck 3'-6" high, stanchions 4'-6" apart.
Steel bulwarks on freeboard deck ✓

Particulars of Gangways, Lifelines, etc. :—

NONE

Particulars of Freeing Arrangements.						
	Length of Bulwark	Height of Bulwark	Size of Freeing Ports	Number each side	Area each side	Rule area each side
After Well	42.5	3'-6"	2'-8" x 1'-6"	53	12.20	11.75
Forward Well	55.5	3'-6"	2'-8" x 1'-6"	3	12	12.1

State position of each freeing port { After Well :—
 (F. and A. position and height above deck edge) { Forward Well :—

SEE SKETCH 7" above deck

State whether the freeing ports are fitted with shutters, bars, or rails, and give particulars of such :— Angled steel shutters & two horizontal bars.

Additional area where sheer is less than standard.

PARTICULARS OF PROTECTION TO OPENINGS, ETC.

HATCHWAYS ON FREEBOARD AND SUPERSTRUCTURE DECKS.											
Description of Hatchway											
Dimensions of Hatchway											
COAMINGS	{	Height above Deck ...									
		Thickness { Sides ...									
		{ Ends ...									
		Stiffeners									
		Brackets, Stays ...									
HATCH BEAMS	{	Number									
		Spacing									
		Scantling and Sketch ...									
		Bearing Surface									
FORE AND AFTERS	{	Number									
		Spacing									
		Unsupported Lengths ...									
		Scantling* and Sketch ...									
		Bearing Surface	No								
HATCH COVERS	{	Material									
		Thickness									
		How fitted (over)									
		Bearing Surface									
Spacing of Cleats											
Number of Tarpaulins											
<p>*Are wood fore and afters steel shod at all bearing surfaces ?</p> <p>Are battens and wedges efficient and in good condition ?</p> <p>Are tarpaulins in good condition and in accordance with rule requirements ?</p> <p>Are lashings provided in accordance with rule requirements ?</p>											

HATCHWAYS ✓

No

Particulars of any special features :—

Endorsement at first survey and at surveys for renewal of Certificate :—

The fittings and appliances are in accordance with the particulars shown on this form (or as now modified) and are in good condition.

Harish B. Murthy



© 2021

Lloyd's Register Foundation