

DISCLOSED SECTION

Rpt. C.11.

Lloyd's Register of Shipping.

Index No. **14-662**
(For London Office only.)

SURVEYS FOR FREEBOARD.

13 MAY 1932

Computation of Freeboard for ~~Steamer~~ Sailing Ship, Tanker
 having **POOP BRIDGE & FORECASTLE.** Port of Survey **Pontsmuth.**

OLCADES (Type of Superstructures.)
 Ship's Name **BRITISH BEACON.** Nationality and Port of Registry **BRITISH LONDON** Official Number **142670** Gross Tonnage **6891** Date of Build **1918-10**

Moulded Dimensions: Length **429.5** Breadth **56.75** Depth **33.58**
 Moulded displacement at moulded draught = 85 per cent. of moulded depth **15845** tons
 Coefficient of fineness for use with Tables **.797**

Particulars of Classification **+100A1.**
Adapted for Oil Fuel 10, 18 & 20 tons carrying petroleum in bulk.

Depth for Freeboard (D)		Depth correction		Round of Beam correction	
Moulded depth	33.58	(a) Where D is greater than Table depth (D-Table depth) R =		Moulded Breadth (B)	56.75
stringer plate	.06	(33.64 - 28.63) x 3.0 =	15.03	Standard Round of Beam = $\frac{B \times 12}{50}$	13.62
heathing on exposed deck		(b) Where D is less than Table depth (if allowed) (Table depth-D) R =		Ship's Round of Beam	13.00
$T \left(\frac{L-S}{L} \right) =$		If restricted by superstructures		Difference	Deficient .62
Depth for Freeboard (D) =	33.64			Restricted to	
				Correction = $\frac{\text{Diff}^\circ}{4} \times (1 - \frac{S_1}{L})$	$\frac{.62}{4} \times .5978 = +.09$

DEDUCTION FOR SUPERSTRUCTURES.

	Mean Covered Length (S)	Equivalent Enclosed Length (S ₁)	Height	Height Correction	Effective Length (E)	
Poop enclosed	94.0	94.00	7.10"	-	94.00	Standard Height of Superstructure 7.50
" overhang						" " R.Q.D.
R.Q.D. enclosed						Deduction for complete superstructure 42.00
" overhang						Percentage covered $\frac{S}{L} = 41.07$
Bridge enclosed	23.6	23.50	7.6"	-	23.50	" " $\frac{S_1}{L} = 40.22$
" overhang aft	4.6	3.38			3.38	" " $\frac{E}{L} = 40.22$
" overhang forward	5.1	2.54			2.54	Percentage from Table, Line A.
Fore enclosed	56.9	49.35	8.0	-	49.35	(corrected for absence of forecastle (if required))
" overhang	49.35					Percentage from Table, Line B. Tanker 31.22
Trunk aft						(corrected for absence of forecastle (if required))
" forward						Interpolation for bridge less than .2L (if required)
Tonnage opening aft						Deduction = $42.00 \times .3122 = -13.11$
" forward						
Total	176.43	172.77			172.77	

SHEER CORRECTION.

Station	Standard Ordinate	S	M	Product	Actual Ordinate	Effective Ordinate	S	M	Product	Mean actual sheer aft =	Mean standard sheer aft =
P. ...	52.95	1		52.95	44 "	44.00	1		44.00	Deficient	49.9% Standard
from A.P. ...	23.56	4		94.24	13 "	10.70	4		42.80	Mean actual sheer forward	Mean standard sheer forward = Excess
" ...	5.82	2		11.64	2 1/2 "	-1.90	2		-3.80	Length of enclosed superstructure	forward of amidships =
amidships ...		4			0		4			L	
from F.P. ...	11.65	2		23.30	15 1/2 "	17.00	2		23.30	"	" aft of " =
" ...	47.13	4		188.52	51 "	53.00	4		188.52	sheers aft	Standard
P. ...	105.90	1		105.90	106 "	106.00	1		105.90	Actual	
Total				476.55					400.72	52.95 1 52.95 44.00 1 44.00	
										23.56 3 70.68 10.70 3 32.10	
										5.82 3 17.46 -1.90 3 -5.70	
Correction =	Difference between sums of products 18									$(.75 - \frac{S}{2L}) = \frac{75.83}{18} (.75 - .2053) = +12.29$	
If limited on account of midship superstructure.											
If limited to maximum allowance of 1 1/2 ins. per 100 ft.											

Deduction for Tropical Freeboard.	Deduction for Fresh Water.	TABULAR FREEBOARD corrected for Flush Deck (if required)
Depth to Freeboard Deck = 33.64	Displacement in salt water at summer load water line $\Delta = 14987$	Correction for coefficient $.797 + .680 = 1.477$
Summer freeboard = 6.67	Tons per inch immersion at summer load water line $T = 50.0$	Depth Correction ... 15.03
Moulded draught (d) = 26.97	Deduction = $\frac{\Delta}{40T}$ inches = 7.49	Deduction for superstructures ... 13.11
Deduction for Tropical freeboard and addition for Winter freeboard = $\frac{d}{4}$ inches = 6.74		Sheer correction ... 2.29
Addition for Winter North Atlantic Freeboard (if required) = 4 1/4"		Round of Beam correction09
		Correction for Thickness of Deck amidships ...
		Other corrections, scantlings, etc. ...
		Summer Freeboard = 69.7

SUMMER FREEBOARD amidships from Centre of Disc to top of Deck Line, Wood, Steel, Deck:-

Tropical Fresh Water Line above Centre of Disc	14 1/4"
Fresh Water Line	7 1/2"
Tropical Line	6 3/4"
Winter Line below	6 3/4"
Winter North Atlantic Line	11"

Tropical Fresh Water Freeboard	5' - 5"
Fresh Water	6' - 1"
Tropical	6' - 1"
Winter	7' - 0"
Winter North Atlantic	7' - 0"

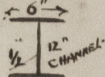
17 MAY 1932

See amended Rpt. 511

© 1931

Lloyd's Register Foundation

PARTICULARS OF PROTECTION TO OPENINGS, ETC.

HATCHWAYS ON FREEBOARD AND SUPERSTRUCTURE DECKS											
Description of Hatchway			16 OT HATCHES	16 OT HATCHES	2 OF BUNKER	CARGO HATCH	4 COMPOUNDED BATHES	4 COAL BUNKER ON POOP	2 COAL BUNKER OR TOP OF SIDE HOUSES	FOREPEAK	MAGAZINE
Dimensions of Hatchway			6' x 4'	6' x 4'	4' x 4'	8' 8" x 12' 0"	10' x 8'	5' 6" x 4' 6"	4' 6" x 4' 3"	2' 5" x 2' 3"	3' x 3'
COAMINGS	{	Height above Deck	10"	30"	10"	30"	12"	30"	3" angle	15"	18"
		Thickness	Sides	46"	44"	46"	44"	50"	9 1/4"	5 1/4"	5 1/4"
			Ends	46"	44"	46"	40"				
		Stiffeners	46"	44"	46"	40"					
		Brackets, Stays	✓	✓	✓						
HATCH BEAMS	{	Number				1	2000s STIFFS 6" x 3 1/2" x 240				
		Spacing					each side of old hatch	✓		✓	✓
		Scantling and Sketch					oil hatch beamings 6" x 3 1/2" x 145"				
		Bearing Surface				6"					
FORE AND AFTERS	{	Number	✓	✓	✓	✓		✓		✓	✓
		Spacing									
		Unsupported Lengths									
		Scantling* and Sketch									
		Bearing Surface									
HATCH COVERS	{	Material	STEEL	- do -	- do -	WOOD steel 2 1/2" hatch	STEEL 60	WOOD 2 1/2"	WOOD 3"	WOOD 3"	STEEL 3/8"
		Thickness	60			hatch top 6" with toggles and	OT	humpship 3"	- do - 3 1/2"	F x A 3"	✓
		How fitted	OT								
		Bearing Surface	✓								
Spacing of Cleats						26"	26"	26"	26"	26"	26"
Number of Tarpaulins						4	2	2	2	2	2

*Are wood fore and afters steel shod at all bearing surfaces ?

Are battens and wedges efficient and in good condition ?

Are tarpaulins in good condition and in accordance with rule requirements ?

Are lashings provided in accordance with rule requirements ?

Particulars of fiddley, funnel and ventilator coamings :—

Stairhold gratings covered by steel humped cross.
 Ceiling & funnel ventilator in apparent condition.
 Empire room sky light of steel strongly constructed.

Particulars of Flush Bunker Scuttles:—

Particulars of Companionways :—

Particulars of Companionways:—

Ramp Rooms. toward { 15' x 8' x 7' high 5/16 plating. Steel doors permanently hinged. Sill 18" handles from both sides.
 5 ft 11 in. 2 x 3 1/2 x 5/16 at 36" spacing. " " " " " "
 aft { 15' x 8' x 6' 9" 1/4 " " " " " "
 5 ft 11 in. 3 x 3 x 7/16 at 30" spacing.

ars of Ventilators in exposed positions on freeboard and superstructure decks :—

1 - 6' x 30' covering	5 crosshairs	Prop 2 - 10' x 30' covering.	Wal. Bunk.
1 - 12' x 12ft	Pump room (hold)	10 - 7' x 18" "	Sherry flat. Stones, etc.
2 - 12' x 30' "	Hold.	2 - 12' x 18" "	"
2 - 8' x 30' "	Cofferdam		
2 - 20' x 30' "	Fore Pump Room.		
2 - 8' x 30' "	Aft cofferdam		
2 - 20' x 30' "	Aft pump room		

Efficiency *apparently*
not worked

All ventilators constructed in accordance with rules.
 Binnings closed by wood plugs & canvas covers.

lars of Air Pipes in exposed positions on freeboard, raised quarter, or superstructure decks :—

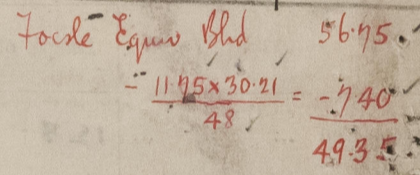
36 height
30
36
36
36
36

C
A
G
A
C
C

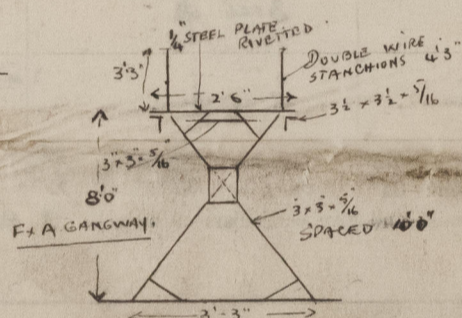
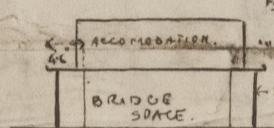
Pipes charred by wood, plus *Caninus* comb.

of Gangway Cargo and Coaling Ports:—

B.T. Co.



Bridge
Amids



Vessel examined in dry dock (Docking survey)

$5\frac{1}{2} \times 11K \checkmark$
 $+ 8\frac{1}{2} \times 50 \checkmark$
 $15500 \checkmark$
 $425 \checkmark$

 $15925 \checkmark$
 $80 \checkmark$

 $15845 \checkmark$

26-11³/₄ ✓
= 27-1³/₄ ✓ BK + 14900 ✓
+ 1³/₄ = 50
87 ✓

14987 ✓

Owners

The Admiralty. (The British Voucher Co Ltd Inqrs)

Fee £ 14 : 9 : 0

Received by me

2/2 18/5/32 *for*