

Lloyd's Register of Shipping.

HEAD OFFICE: 71, FENCHURCH STREET, LONDON, E.C. 3.

LLOYD'S REGISTER
LONDON

Fiume, 27 January 1922.

BONIVENTO,
ENGINEER SURVEYOR.

REC'D

1 FEB 1922

Via Pomerio No. 23/1

ANS'D

Dear Sir,

BOSNIA.

With reference to the Classification of the S/S BOSNIA of Sea Navigation Dalmatia I send you the Boiler plan and the Tubes plan for the consideration of the Committee and the required following particulars:

Diam. of Cylinder = $13\frac{7}{8}$ " X $22\frac{1}{4}$ " X 36"

Stroke = 24"

Rev. per minute = 140

Working pressure = 12 Atmosfere

Diam. of Screw-shaft $7\frac{3}{8}$ " (Cont. liner Diam. $7\frac{7}{8}$ ")

Length of stern bush = $19\frac{3}{4}$ "

Diam. of tunnel shaft = $7\frac{5}{16}$ "

Diam. of Thrust-shaft = $7\frac{1}{16}$ "

Diam. of Crank pin and journals = $7\frac{1}{16}$ "

Size of Crank - Web = 20.2" X 8.5" X 5"

Pith of Screw = 10'-3"

Total surface = 23"

Diam. of Feed pump = 2.25" Stroke = 13"

Diam. of Bilge pump = 3" Stroke = 13"

Size of Donkey pump:

Wier = 5" X 7" X 10"

Duplex = 6" X 5.75" X 4.75"

- 2 -

I remain your obedient servant

The Secretry-London-



© 2020

Lloyd's Register
Foundation

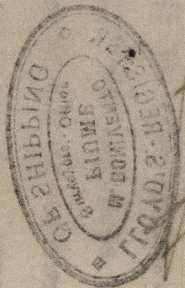
0242 1/2

Delivered to the Chief Engineer, Sardinia

Referred to the Chief Engineer Surveyor.

Handwritten initials

-1 FEB 1922



Handwritten signature

RECEIVED THE LLOYD'S REGISTER

- 8 -



LLOYD'S REGISTER

© 2020

Lloyd's Register
Foundation