

RUDDER

HOLES FOR $\frac{3}{4}$ " RIVETS DRILLED
5" DIA. APART
SCALE $\frac{3}{4}$ " = ONE FOOT.

NUMERAL FOR RUDDER 7446

SPEED 10 TO 12 KNOTS.

RUDDER PLATES .28 THICK

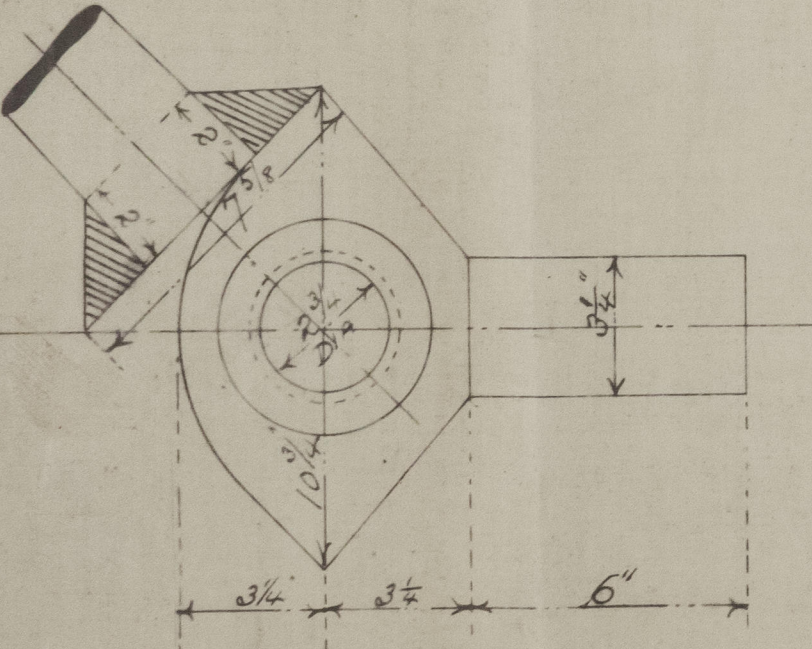
TURNED DOWN
3" FROM TOP

10.2.14

WEDGES & NUTS TO BE
FACED UP

ENLARGED VIEW OF PINTLES

NOTE - THESE PINTLES ARE LOOSE. THE
CENTRES ARE TO BE KEPT IN LINE WITH
CENTRE OF HOLES IN STERN POST.

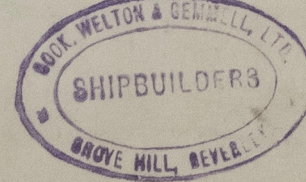


ENLARGED VIEW OF STOPPER

RUDDER TO HEEL OVER TO AN ANGLE OF 45° EXACTLY

DATE SUBMITTED FEB. 3RD 1914.

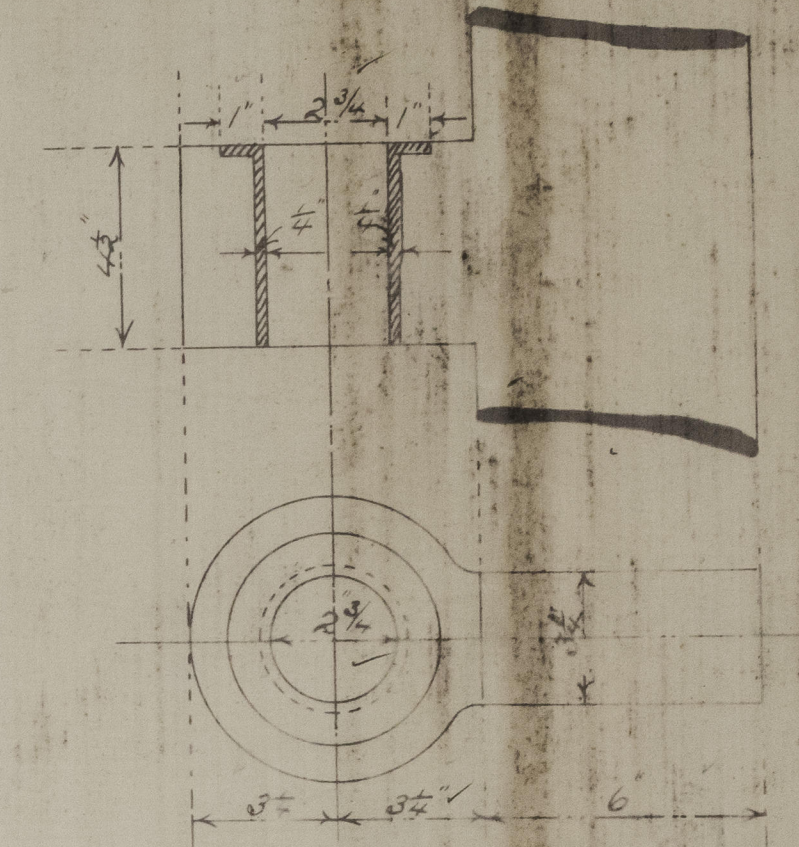
" APPROVED



Nº 308.

STERN FRAME

HOLES PITCHED 1 1/4" AND 2" FROM INNER EDGE OF POST
HOLES DRILLED FOR 1" RIVETS 5" DIA. APART
SCALE $\frac{3}{4}$ " = 1 FOOT



ENLARGED VIEW OF STEEL BUSHES

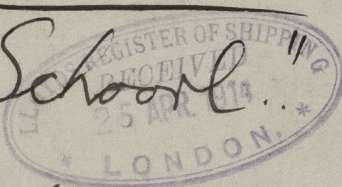
NOTE - THIS DIMEN-
SION TO BE BORED OUT
EXACTLY TO SIZE GIVEN

10.2.14

Cook, William & Grummett:

No 308.

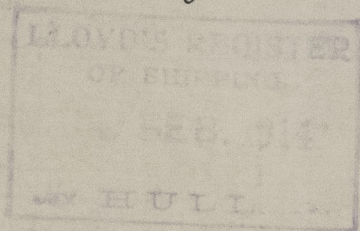
Steu. Frue & Rudder

M/n "School" 

S/S Cadet.

Hull Rpt. 28211

"Lady Estelle."



© 2020

Lloyd's Register
Foundation

007008-007020-0058

LR