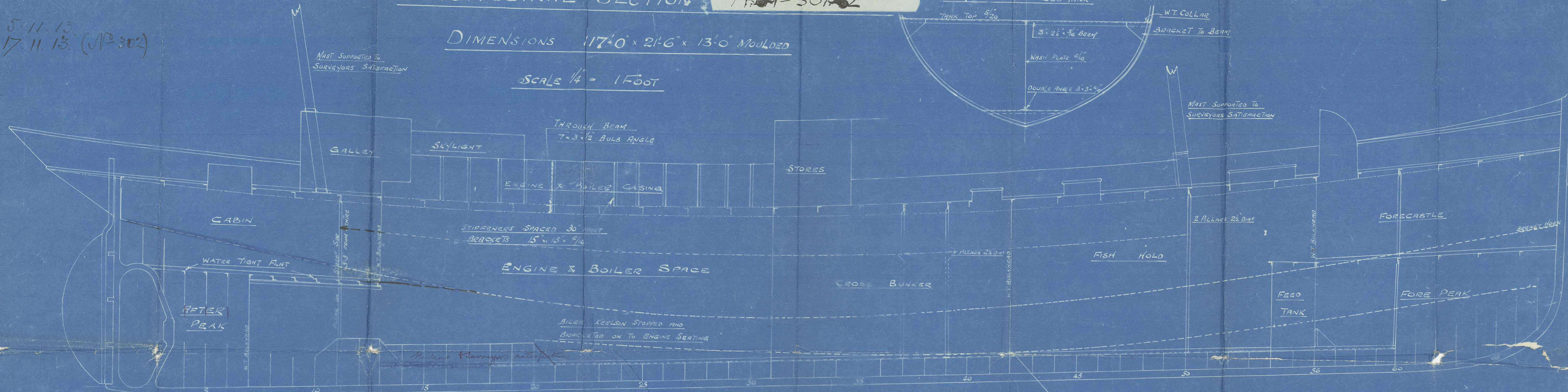


5.11.13.
17.11.13. (No 302)

LONGITUDINAL SECTION ~~S/F No 301-2~~

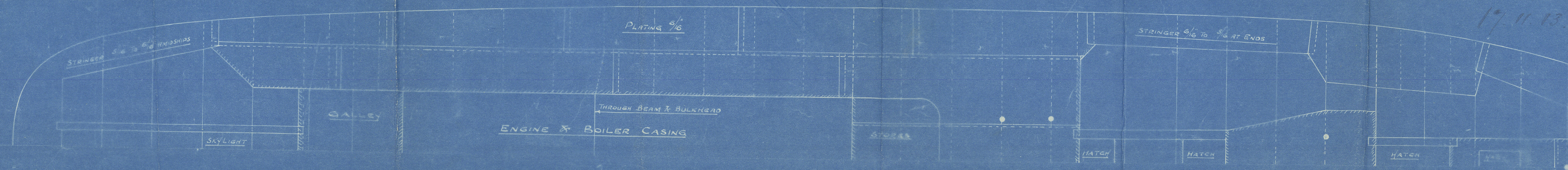
DIMENSIONS 117'-0" x 21'-6" x 13'-0" MOULDED

SCALE 1/4" = 1 FOOT



Pillaring throughout to
Surveyors satisfaction

KEELSON CONTINUOUS & MADE W.T.

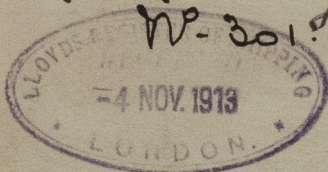


Oct 31st 1913

JOS. T. ELTRINGHAM & CO.
SHIP AND BOILER BUILDERS
SOUTH-SHIELDS
DRAWING No. 24
DATE Oct. 31st 1913

Profile and deck plan
Messrs J. P. Eltringham & Co

W-301.52



301 "John Donovan

302 "Alex Hastie

Inve. 16677.

NEWCASTLE-ON-TYNE.

Report No. 66575.

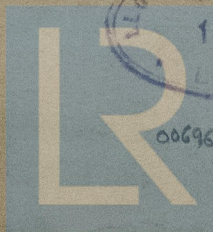


© 2021

Lloyd's Register
For information

006968-006982-0242

1000



006968-006982-0242

Lloyd's Register
Foundation