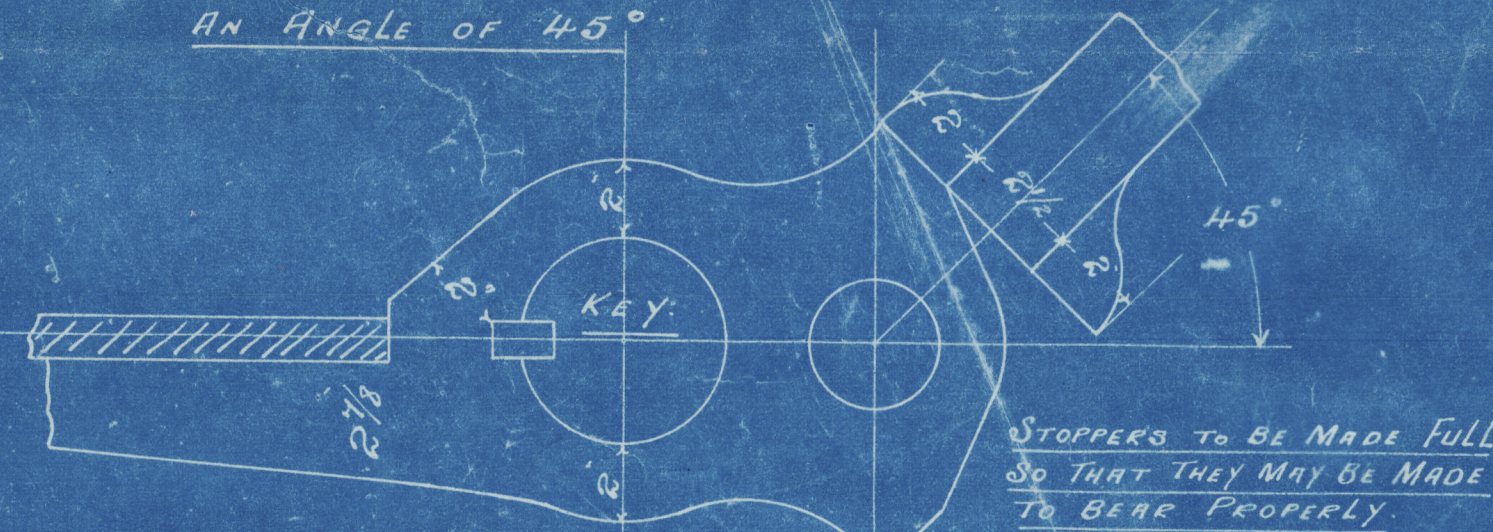


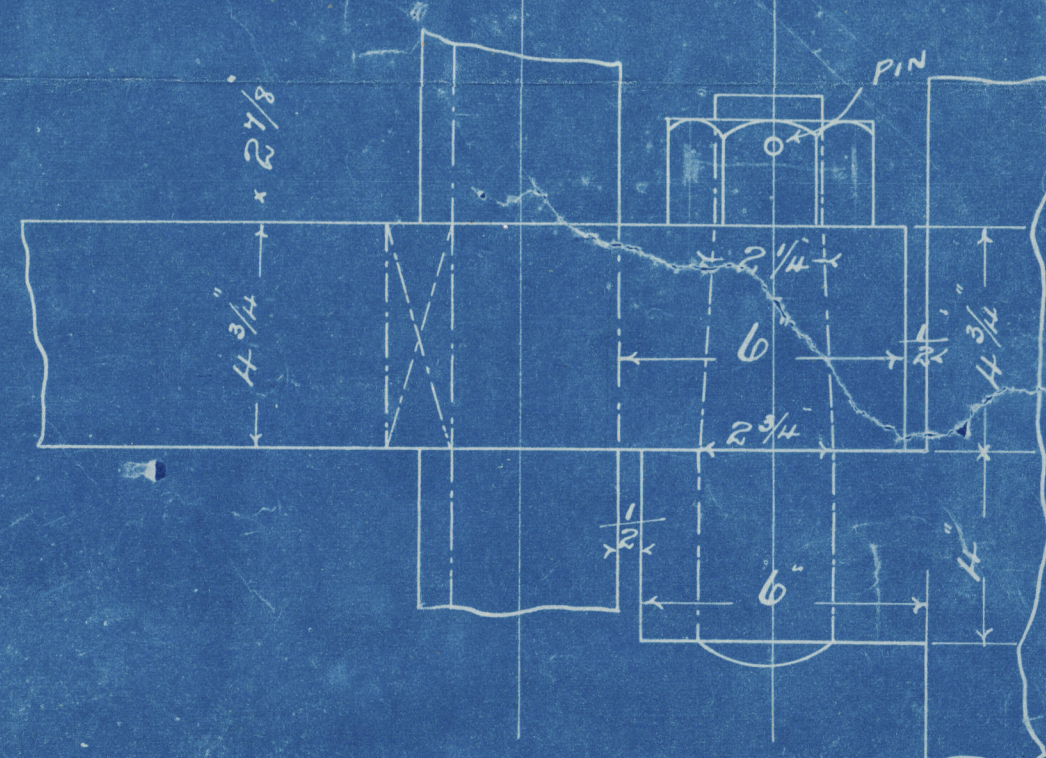
5.11.13
17.11.13 (No. 302)

RUDDER HEAD CUT SQUARE
AS SHOWN FOR A DEPTH OF 3"
DIAPHRAGM

RUDDER TO HEEL OVER TO
AN ANGLE OF 45°



SECTION AT A.B. & C.D.



2 3/4" LOOSE STEEL PINTLES TO SKETCH
SCALE 3" = 1 FOOT.

DETAIL OF RIVETING
IN WAY OF STOPPER B.

1" HOLES
5" APART

AREA OF RUDDER 32 $\frac{1}{2}$ = A.

CENTRE OF GRAVITY

AFT CENT. OF PINTLES

A * D = 54.72'

SPEED OF VESSEL 10 1/2 KNOTS.

STERN & RUDDER FRAMES

5. Nos 301.2.

SCALE 1" = 1 FOOT.

UNDER LLOYD'S SURVEY.

6'-2 1/2"

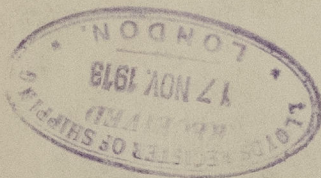
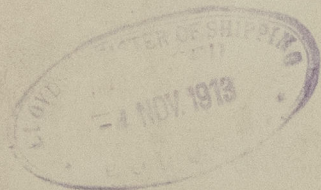
1" HOLES 5" APART.

TAPER FROM 7 1/2" x 2 1/2" TO 7 1/2" x 1 1/2"

DETAIL OF RIVETING IN ARMS
1 1/2" SCALE.

W. T. ELTRINGHAM & CO.
SHIP AND BOILER BUILDERS
SOUTH SHIELDS
DRAWING No. 23
DATE OCT 31 1913

Sternframe & Rudder
Messrs J. S. Eltringham & Co
No. 301. 12



301 "John Donovan"
302 Alex Ashie.
More 6697.

NEWCASTLE-ON-TYNE.

Report No. 665 N.



© 2021

Lloyd's Register
Foundation

006968-006982-0240