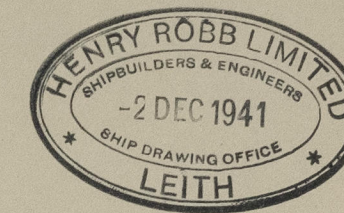


T.S. TUGS. M.S.C. "NEPTUNE" & "M.S.C. NYMPH."

MIDSHIP SECTION.



SCALE: 1/2" = 1 FOOT. DIMS. = 86'-0" B.P. x 23'-0" MLD. x 11'-6" MLD.

CLASSED LLOYDS * IOOA FOR RIVER & HARBOUR TOWING SERVICE.

EQUIPMENT LIST.

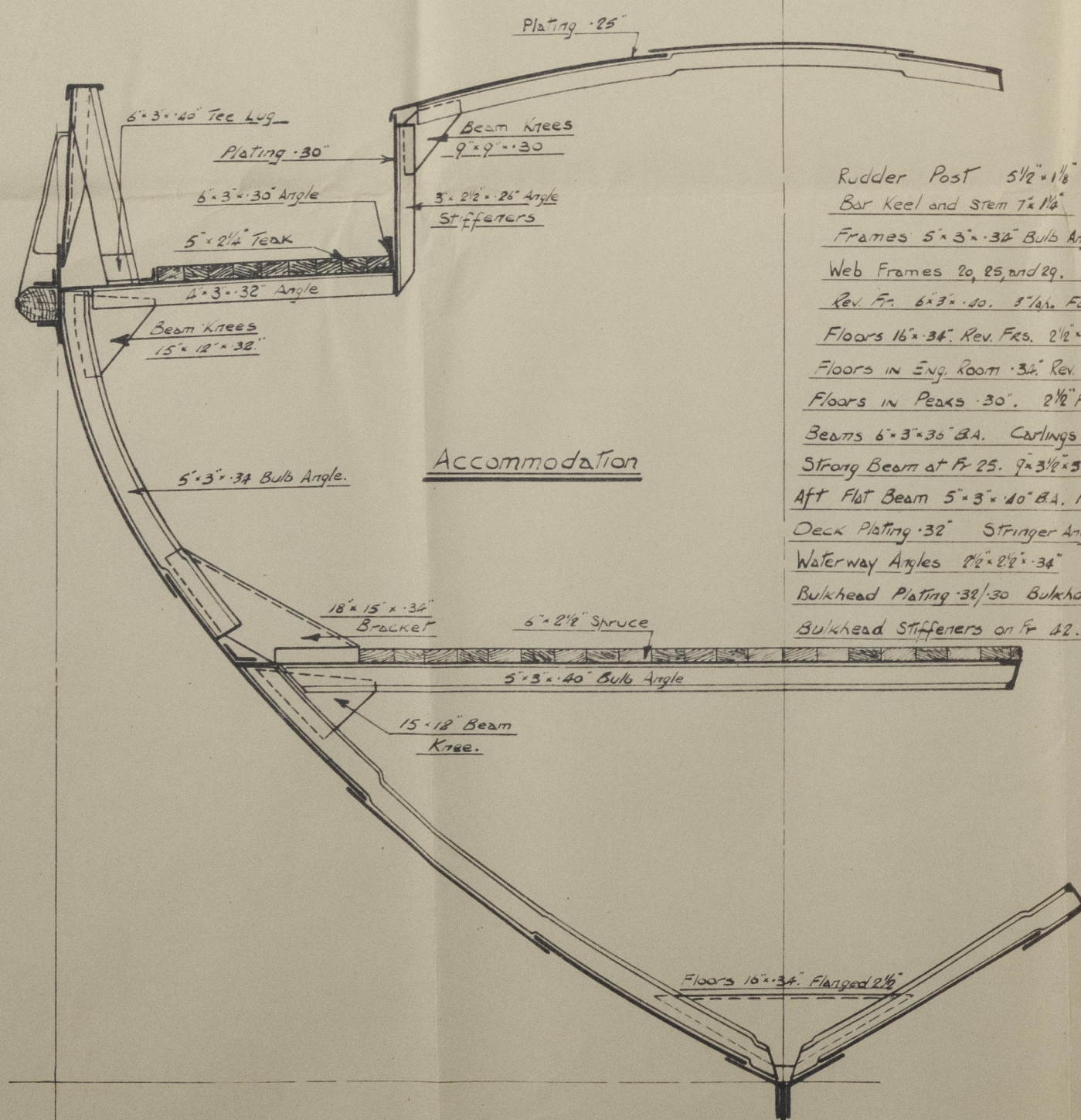
40 fathoms 5" Manila rope. 40 fathoms 4" Manila rope.
30 fathoms heavy wire.

LLOYDS NUMERALS

$$\begin{aligned} L \times D (86'0" \times 11'5") &= 989 \\ L \times (B+D) 86' (23'0" + 11'5") &= 2767 \\ \frac{L}{D} (86 \div 11.5) &= 7.47 \\ \frac{L}{B} &= 10.27 \end{aligned}$$

RIVETING NOTES

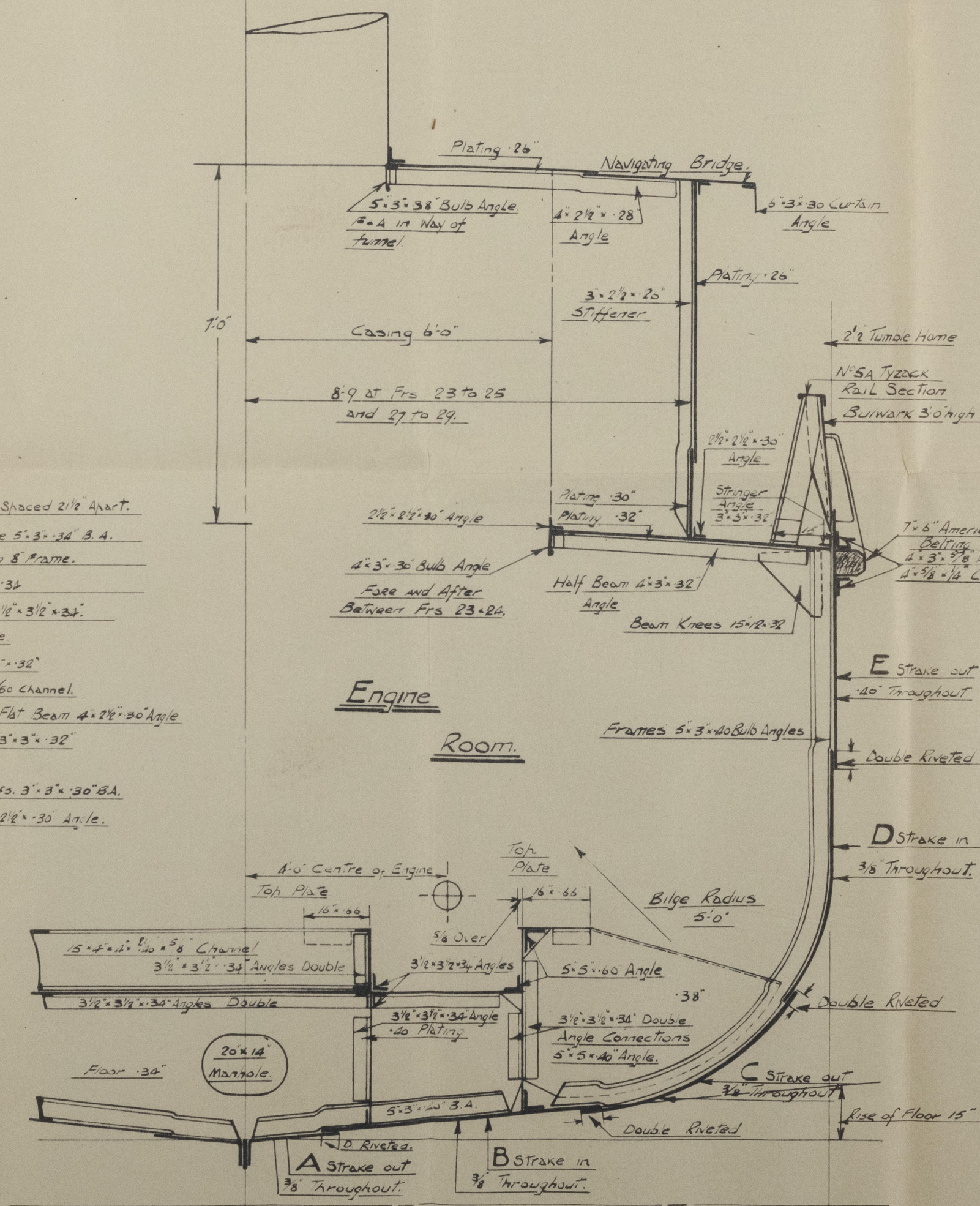
BUTTS of Sheerplate and girders, D.R. Stays
BUTTS of Shell Plating Double Riveted Laps
Seams of Shell Plating Doubled Riveted Laps
Remainder in Accordance with Lloyds Rules.



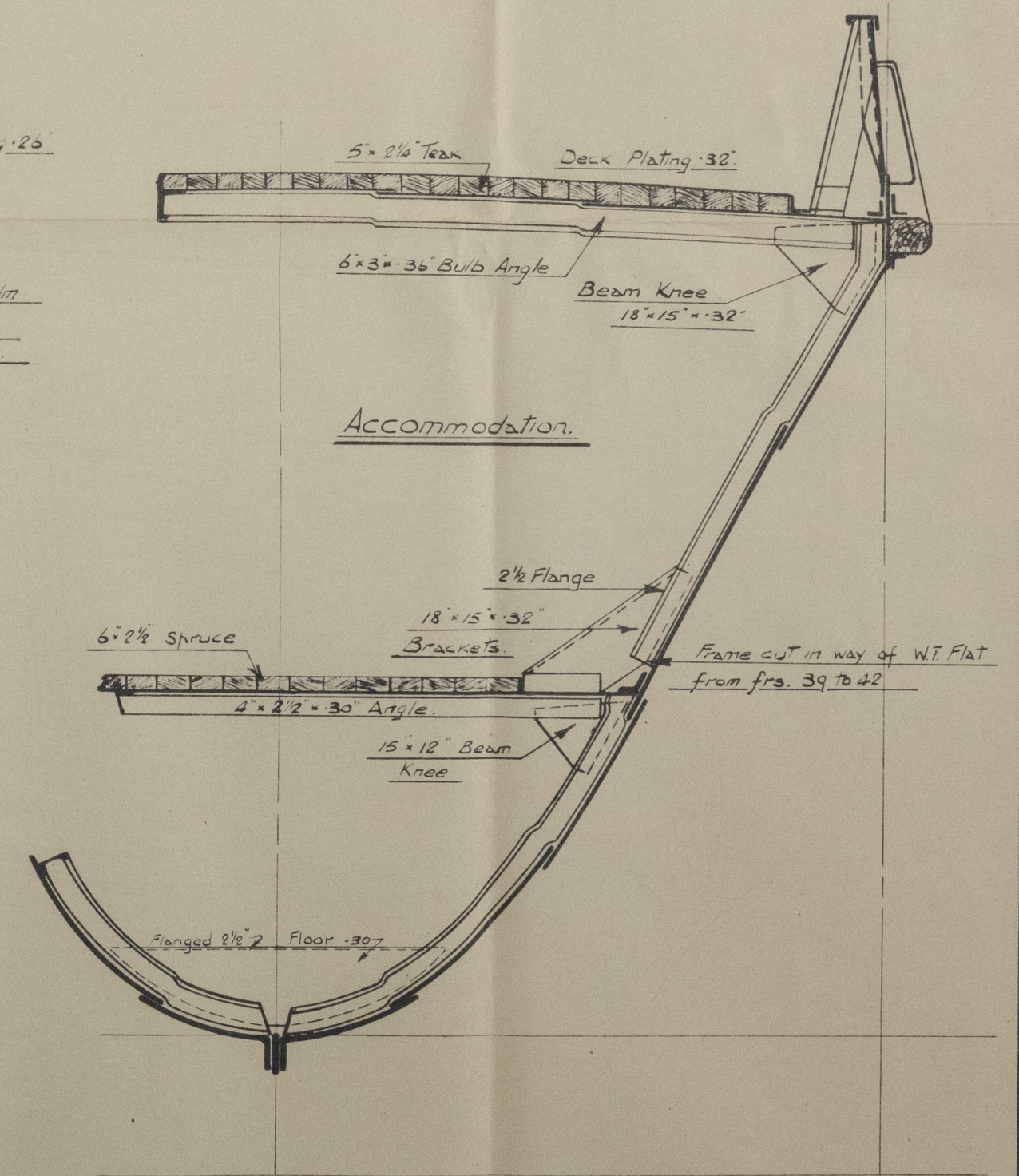
Section thro' Aft Accommodation.

at W.T. Flat.

HENRY ROBB LTD.
SHIPBUILDERS
LEITH SCOTLAND.



Section thro' Engine Room



Section thro' Ford. Accommodation.

at W.T. Flat.

HENRY ROBB LTD

YARD N° 319

MIDSHIP SECTION (AS BUILT)

TUG "M.S.C. NEPTUNE"

LEITH RPT. N° 20601



© 2021

Lloyd's Register
Foundation

006968-006982-0106