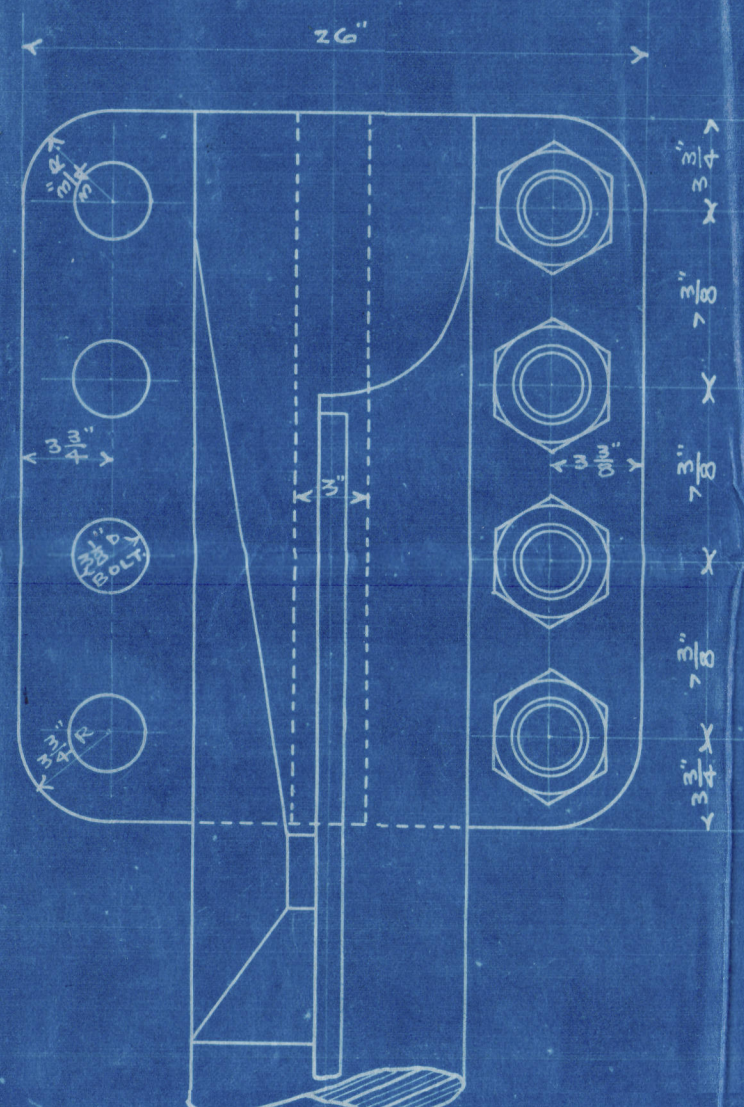


$$\frac{A}{D} = \frac{172.70}{3.69} = A \times D = 637.263$$

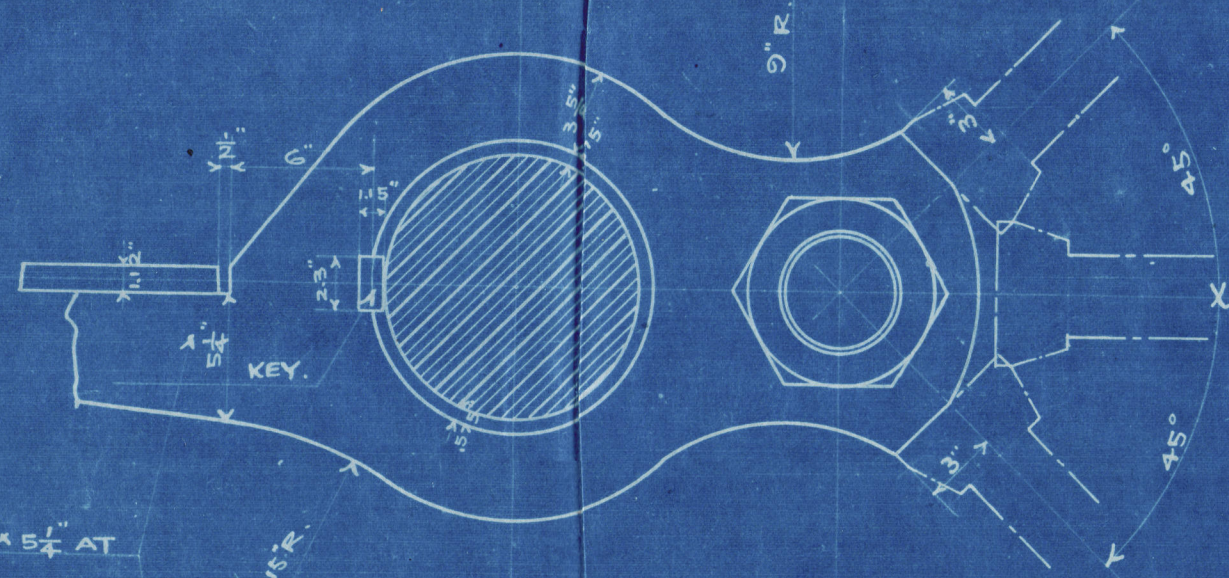
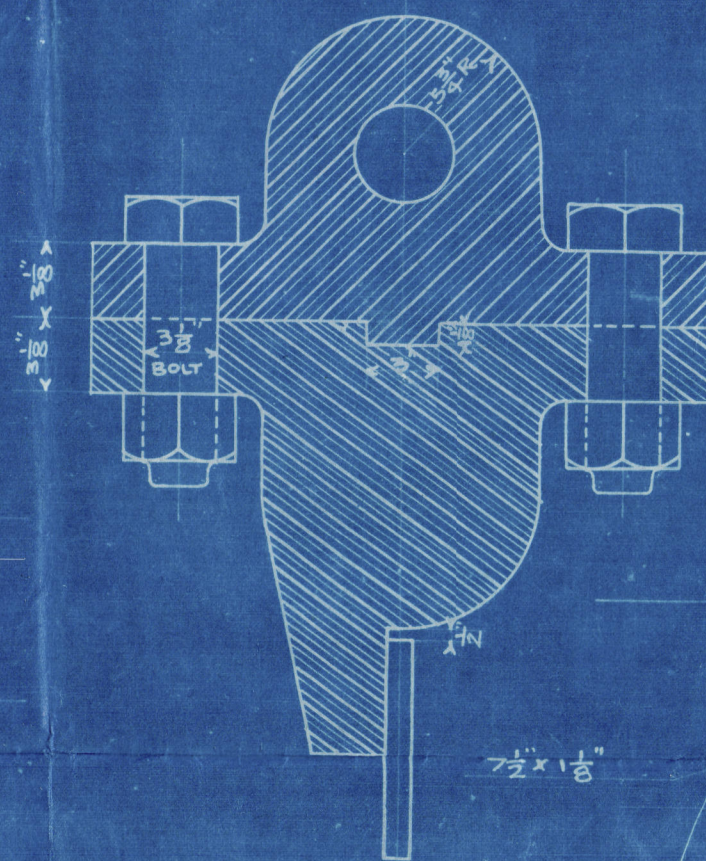
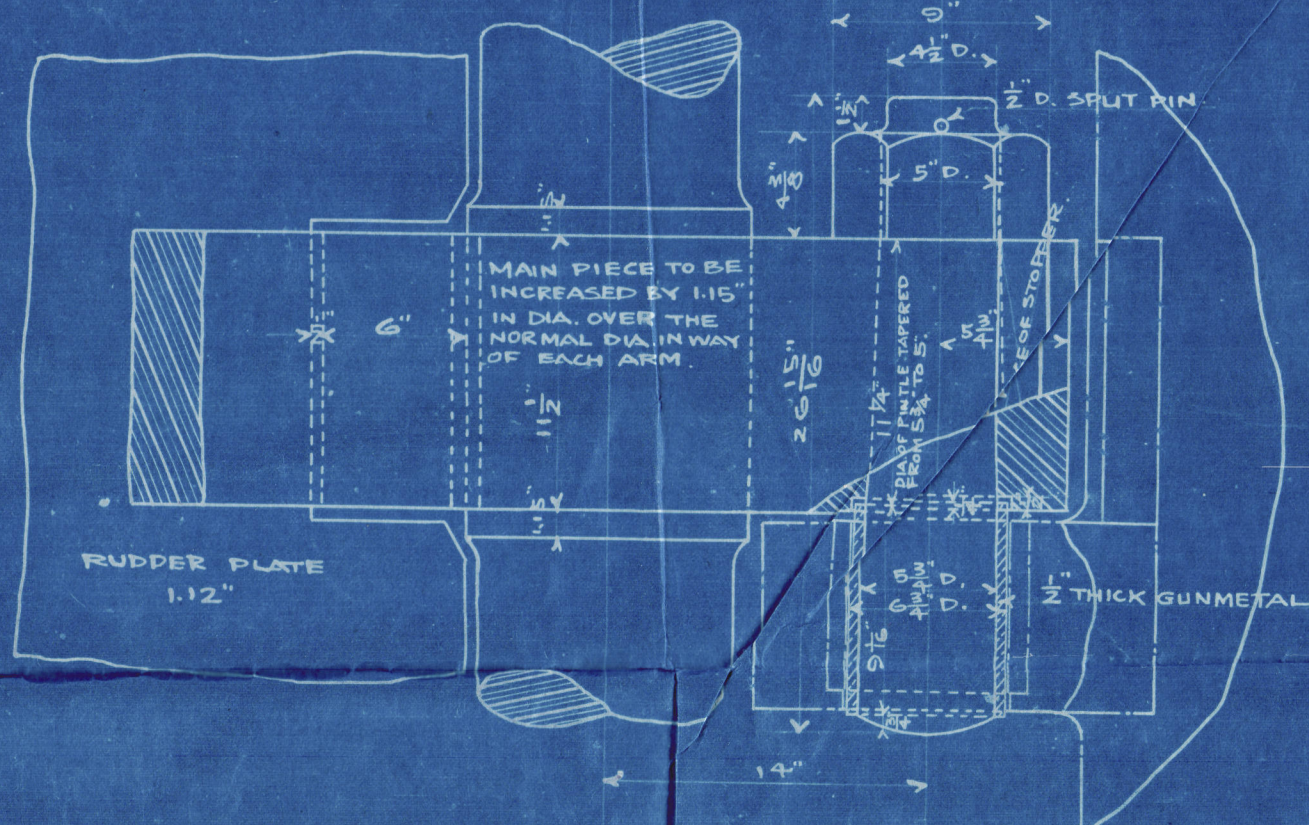
Speed 12-14

SCALE $1\frac{1}{2}$ INCH TO ONE FOOT.

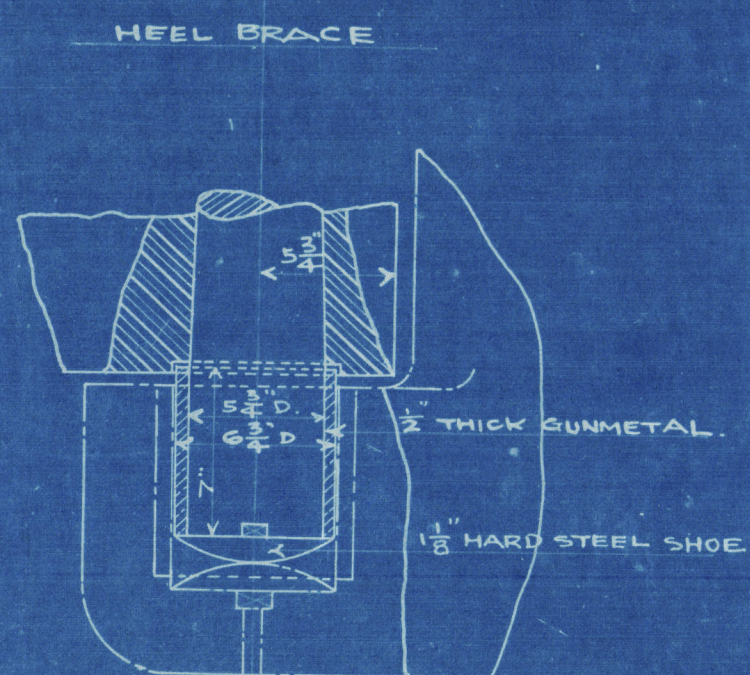
SCALE $\frac{1}{2}$ INCH TO ONE FOOT.



SECTION THROUGH A.B



RUDDER ARM TAPERED FROM $11\frac{1}{2} \times 5\frac{1}{4}$ " AT
MAIN PIECE TO $7\frac{1}{2} \times 1\frac{1}{8}$ " AT POINT.



RIVETS 1 1/4 DIA. SPACED 4 1/2 DIA.
APART C. TO C. WITH REEL RIVETING

M. STEEL RUDDER PLATE
1.12" THICK.

244
Amended Rudeler
Nagasaki Rept-N^o1005
"MANILA MARU"



006942-006953-0117



© 2021

Lloyd's Register
Foundation