

Scale $\frac{1}{2}$ in = 1 ft

Lloyds Numerals

$\frac{1}{2}$ Breadth 11.10

Depth --- 133'

1/2 Girlh - - - - - 20 12

$$T1 = 9.7 \text{ sec} \quad \frac{44.62}{110.53} = 1st$$

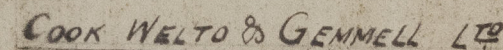
Lloyd's length 110.08
4911.77 - 2nd

Proportions

Depth in Length = 824

Breadths . . . 4 92

E. B. Casner as approved



BEVERLEY

Date Submitted. JAN 27TH 1909

Date Approved. " 28TH "

Lloyd's Register
Foundation

006930-006941-0233

Cook, Melton & Gemmell

— No 180 —

of "Yorick"

Hull Report No 21567



© 2021

Lloyd's Register
Foundation

006930 - 006941 - 0233