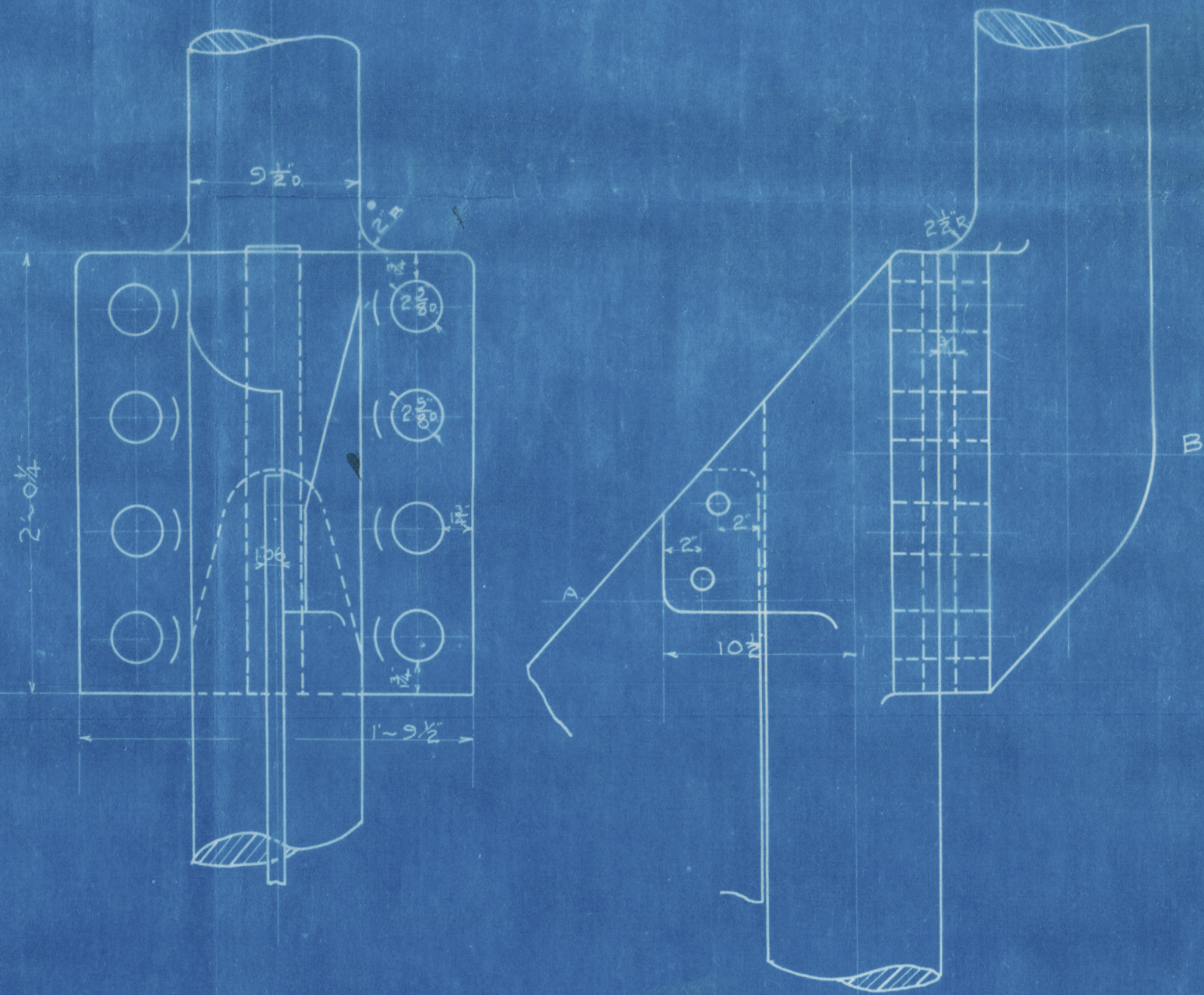


Nº 91. S. S. MALACCA MARU.

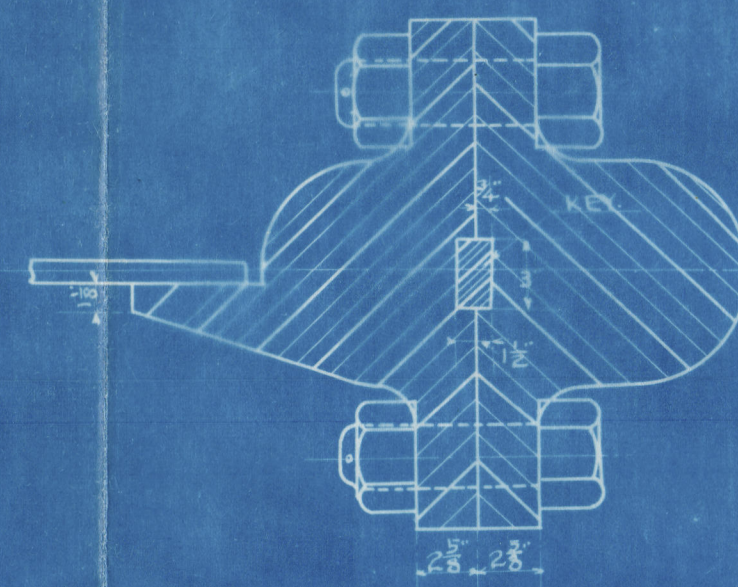
RUDDER & STERN FRAME.

SCALE $\frac{1}{2}$ INCH TO A FOOT

SCALE $\frac{1}{2}$ & 3 INCH TO A FOOT FOR DETAILS.

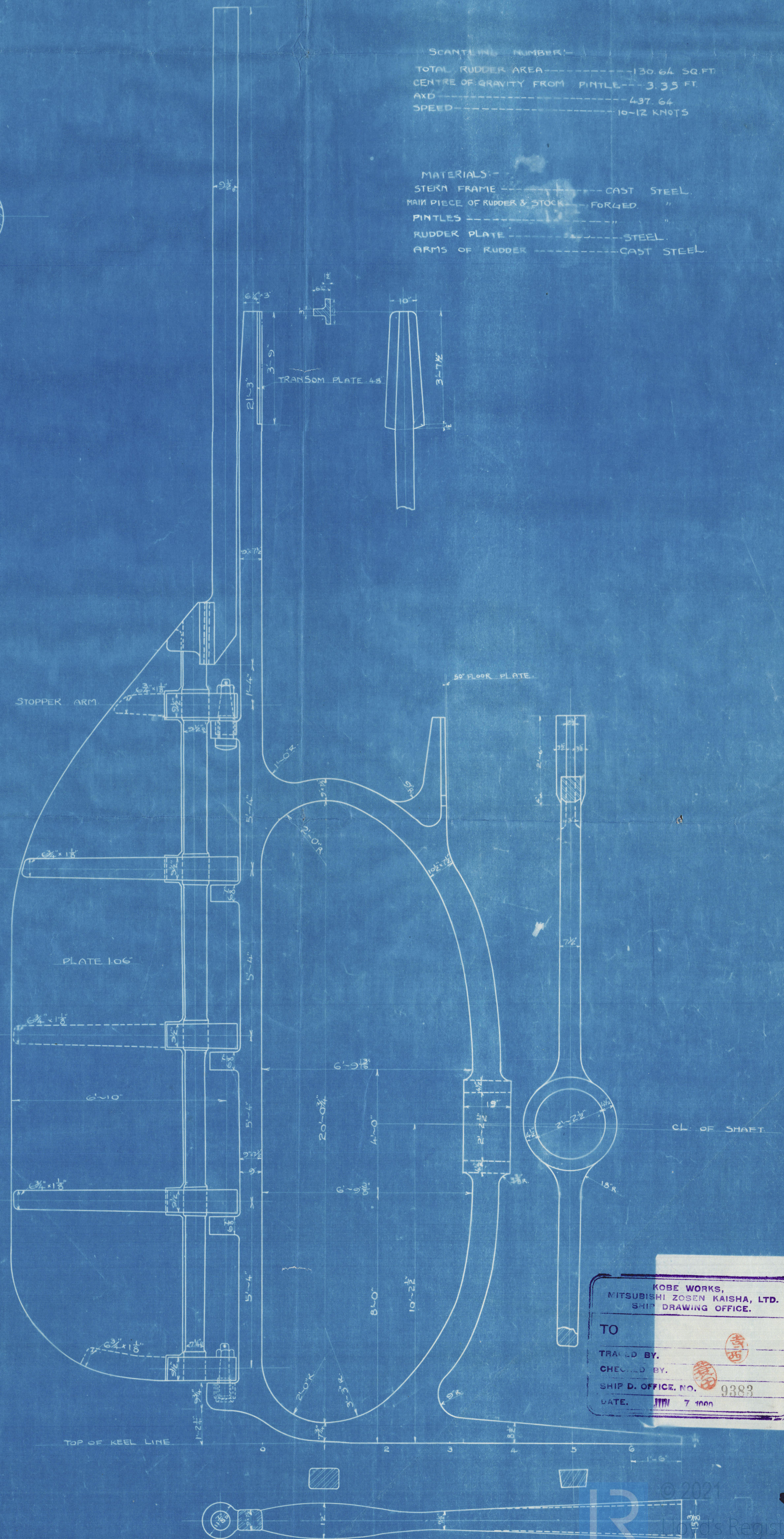
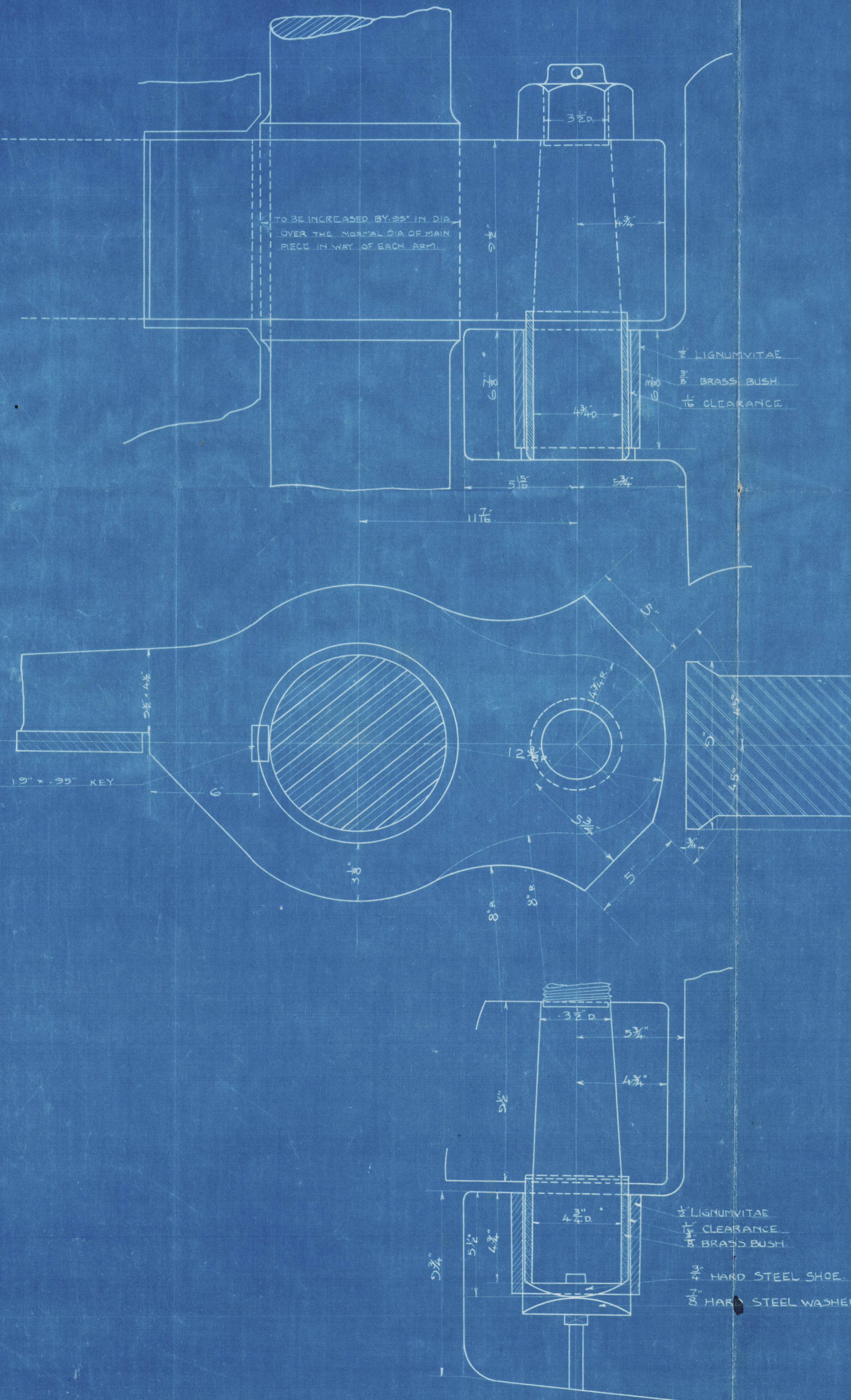


SECTION THROUGH A.B.



SCANTLING NUMBER: 130.64 SQ. FT.
TOTAL RUDDER AREA: 130.64 SQ. FT.
CENTRE OF GRAVITY FROM PINTLE: 3.35 FT.
AXD: 437.64
SPEED: 16-12 KNOTS

MATERIALS:-
STERN FRAME: CAST STEEL
MAIN PIECE OF RUDDER & STOCK: FORGED
PINTLES: STEEL
RUDDER PLATE: STEEL
ARMS OF RUDDER: CAST STEEL



KOBE WORKS,
MITSUBISHI ZOSEN KAISHA, LTD.
SHIP DRAWING OFFICE.

TO
DRAWN BY
CHECKED BY
SHIP D. OFFICE NO. 9383
DATE. 7 1900

of "Malacca Maru"

Kobe Mitsubishi Hull No 91.

Stern Frame & Rudder
of vessel as built

Report No. 2869.

Plan transferred to
Permanent Cement Dis 33

006930-006941-0054



© 2021

Lloyd's Register
Foundation