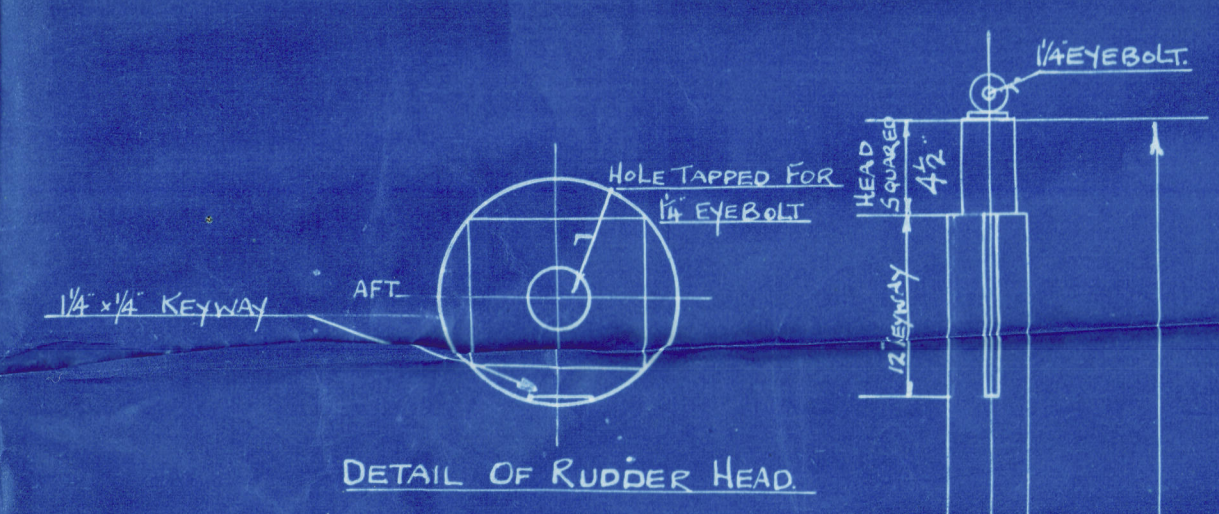


MATERIAL - FORGED IRON.  
HOLES IN STERNFRAME 1" DIA. 5" PITCH.  
ALL TO LLOYD'S TESTS.  
GUDGEONS 7 1/8" PROJECTION.



| No | ORDS | 5 Functions<br>M | (ORD) | 5 Functions<br>Prod. C. |
|----|------|------------------|-------|-------------------------|
| 1  | 1.03 | 1.03             | 1     | 1                       |
| 2  | 3.20 | 4.29             | 10    | 4.20                    |
| 3  | 3.49 | 7.76             | 15    | 2.30                    |
| 4  | 4.09 | 10.12            | 19    | 6.4                     |
| 5  | 8.87 | 77.4             | 13    | 30                      |
| 6  | 8.12 | 72.89            | 10    | 40                      |

58.33                      20.5

AREA:  $58.33 \times 2.67 = 40.24^{\frac{1}{2}}$

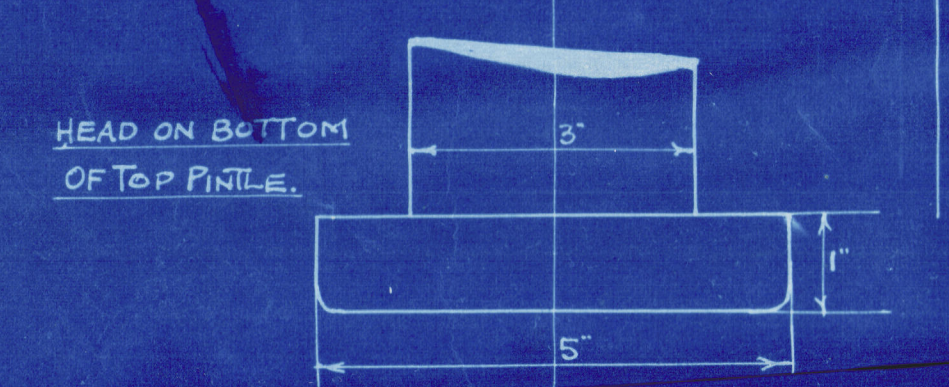
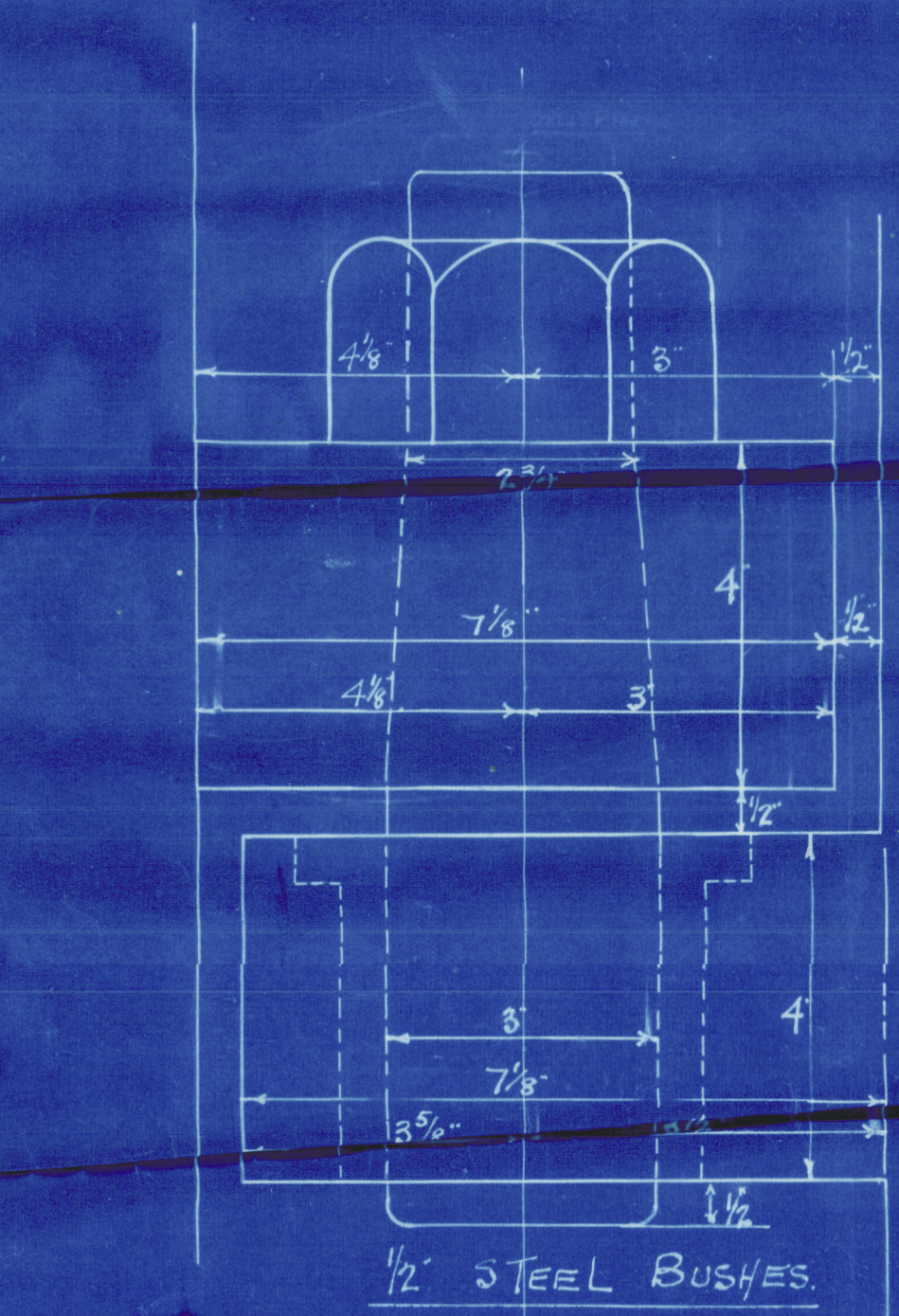
$C_4 = \frac{20.5}{58.33} = 1.76$

D:  $C_4 \times D = \text{DISTANCE TO CENTER OF GRAVITY}$

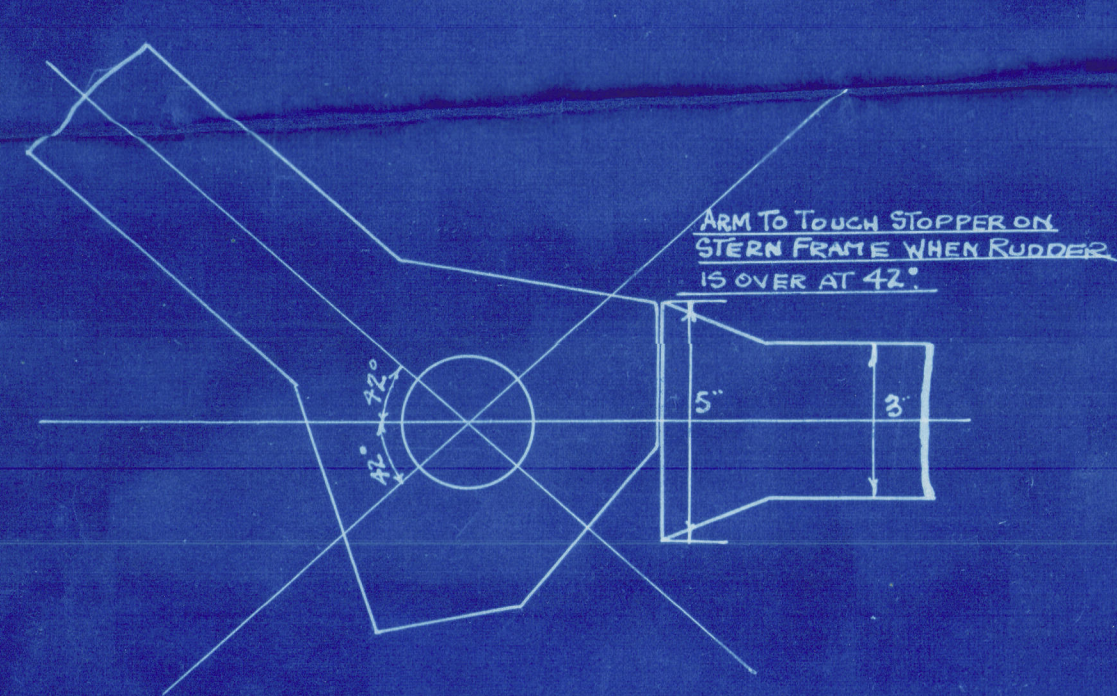
D:  $1.76 \times 34 = 2.10$

A.D.  $84.50$

SPEED NOT EXCEEDING 10 KNOTS.



DETAIL OF GUDGEONS & PINTLES.

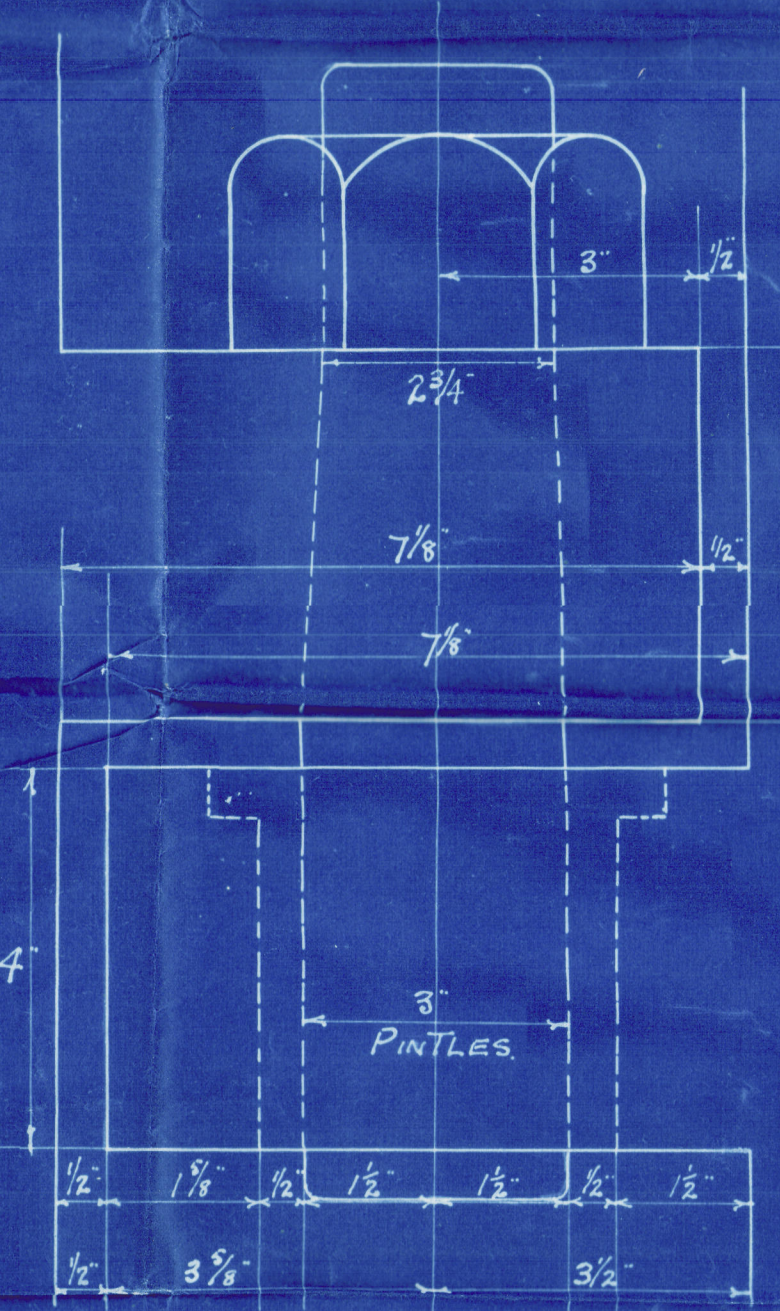


DETAIL OF STOPPER ON TOP GUDGEON.  
SCALE  $\frac{1}{4}$ " = ONE INCH.

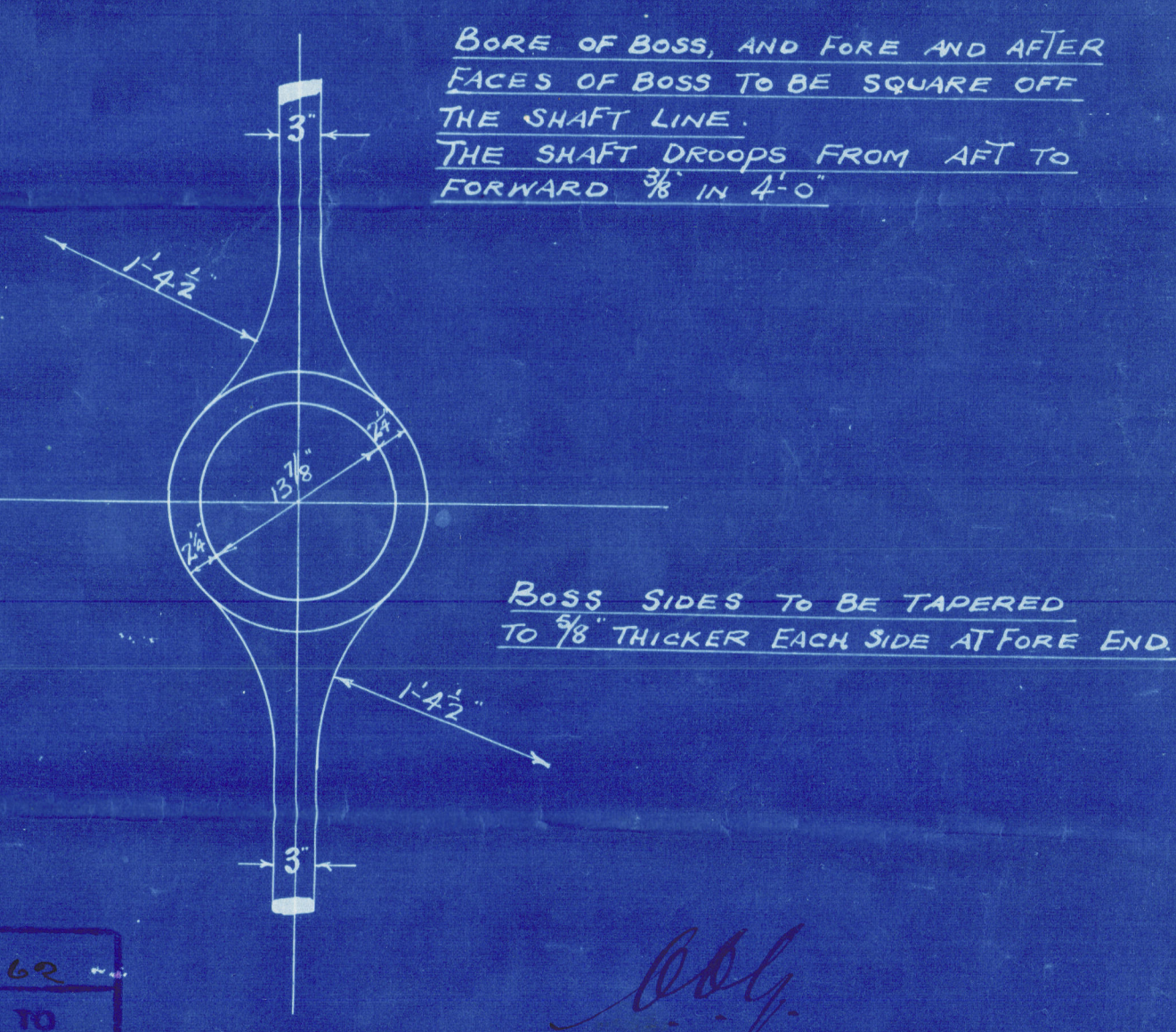
**RUDDER FRAME.**  
No. [REDACTED]  
SCALE 1" = 1 FOOT.

7/8" RIVETS. 5 DIAS. APART CR. TO CR.  
TO LLOYDS TESTS.

NOTE. THE UPPER & LOWER SURFACES OF GUDGEONS TO BE SQUARE TO POST & DEAD LEVEL SO THAT PINLE NUTS WILL BEAR TRUE ON SAME.



DETAIL OF PINTLES.  
1/2 STEEL BUSHES.



BORE OF BOSS, AND FORE AND AFTER  
FACES OF BOSS TO BE SQUARE OFF  
THE SHAFT LINE.  
THE SHAFT DROOPS FROM AFT TO  
FORWARD  $\frac{3}{8}$  IN 4'-0"

BOSS SIDES TO BE TAPERED  
TO  $\frac{5}{8}$ " THICKER EACH SIDE AT FORE END.

AMENDED To LLOYD'S.



Stern & ruder der Jrame

Bochrane No 988.494

<sup>s</sup> Daingroates  
Hull Report 36401.

" 40 am flower "

Hull F. B. Report - No 34144

Lloyds