

13.11.29

No 179

S.S. MOTOR TANKER

MLP DIM: 190'-0" x 32'-6" x 14'-3"

SCALE 1/2" = 1 FOOT

5'-0" DEPTH OF TRUNK

TEST HEAD 5'-0" ABOVE TRUNK TOP

8'-0" ABOVE UPPER D^K WING TANKS

TRANSVERSE O.T. B^{HD}S

PLATING .35" - .30"

STIFFS IN TRUNK 6 1/2" x 3" x 38" B.A. SPACED 27"

" CLEAR OF TRUNK 5 1/2" x 3" x 38" B.A. " 21 3/4"

BOUNDARY BARS 3" x 3" x 32" DOUBLE

NOTE: TRANSVERSE B^{HD}S INTERCOSTAL
& LONGITUDINAL B^{HD} CONTINUOUS

NUMERALS

L x B + D = 8882.5

L x D = 2707.5

D TO UPPER D^K 13.33

D TO TRUNK = 9.58

MOULDED DRAUGHT:

EQUIPMENT NUMERALS

L x B + D = 190'-0" x 32'-6" + 14'-3" = 8882.5

POOP = 53'-7 1/2" x 7'-5" x 7'-5" = 302.0

FOCLE = 22'-0" x 6'-5" x 7'-5" = 107.0

TRUNK = 114'-2 1/2" x 5'-0" x 5'-0" = 285.6

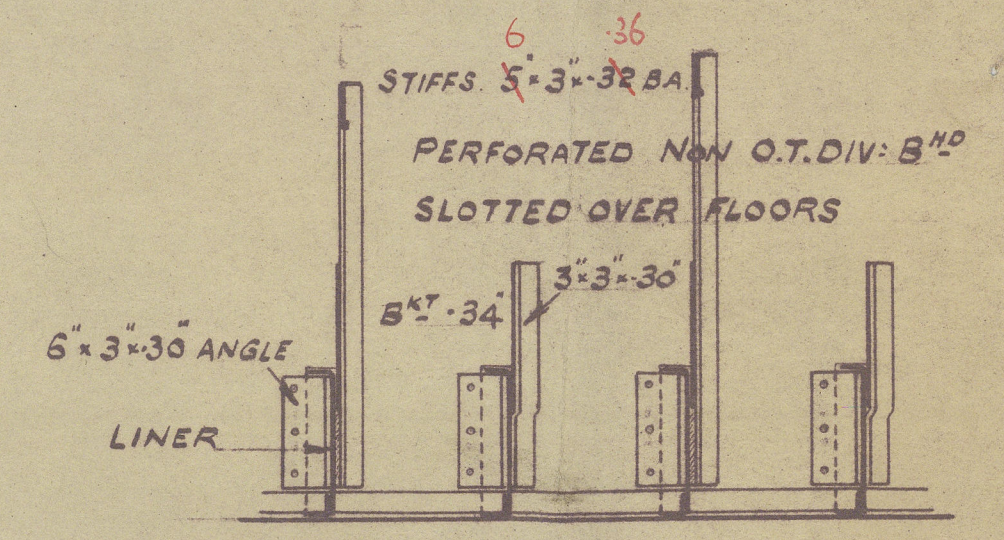
HOUSE = 27'-0" x 7'-5" x 5'-0" = 101.25

MACHINERY CASING 23'-5" x 7'-5" x 5'-0" = 88.0

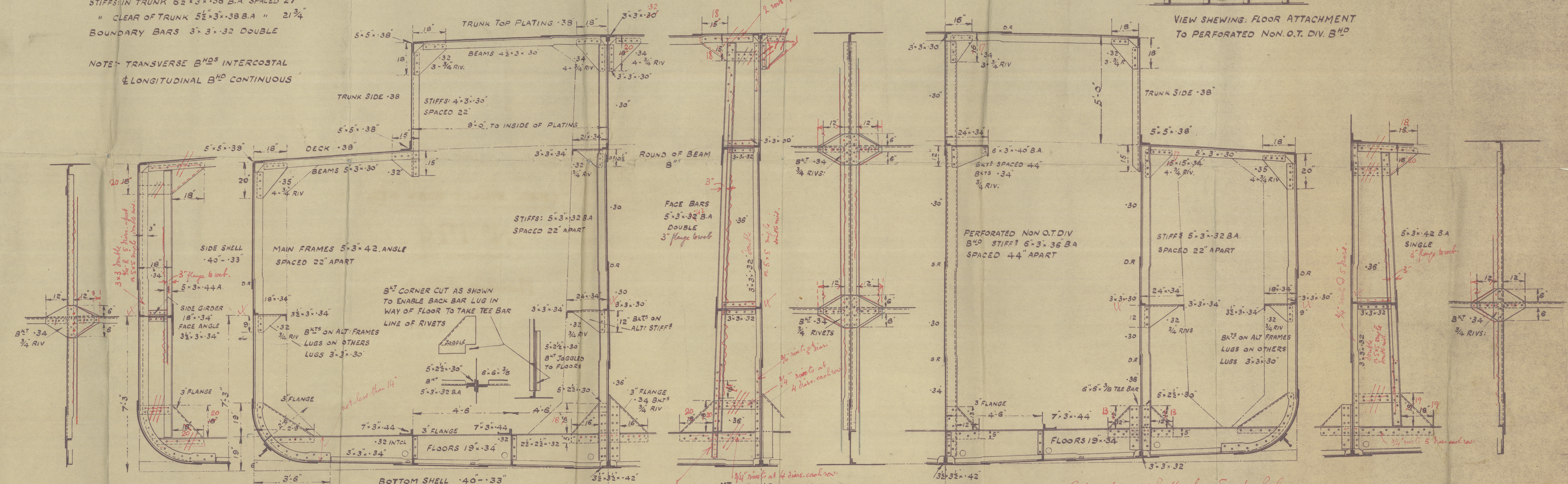
HOUSE = 9'-2 1/2" x 7'-5" x 5'-0" = 34.65

9801.00

Equipment as per Rules.



VIEW SHEWING FLOOR ATTACHMENT
TO PERFORATED NON O.T. DIV. B^{HD}



ARR^{MT} OF WEB AT MID-LENGTH
OF TANKS NOS 1-2 & 3 PORT & STAR^{BD}

REV ANGLES FOR D 1/2 L 3" x 3" x 30"
MIDSHIP THICKNESS OF 2 STRAKES MAINTAINED
TO RULE POSITION OF COLLISION BULKHEAD

ARR^{MT} OF WEB AT MID LENGTH
OF TANKS NOS 1 & 3 STAR^{BD} SIDE

Strengthening of Bottom forward as per Rules.

ARR^{MT} OF WEB AT MID LENGTH
OF TANK NO 2

X hup connecting longitudinal girders to shell & bulkhead to double for 3 frame spaces at each side of web & transverse bulkhead.

13.11.29

006819-006830-0057

CHAS. HILL & SONS LTD

Nº 179.

Midship Section.



Russellwood

006819 - 006830 - 0057



© 2020

Lloyd's Register
Foundation