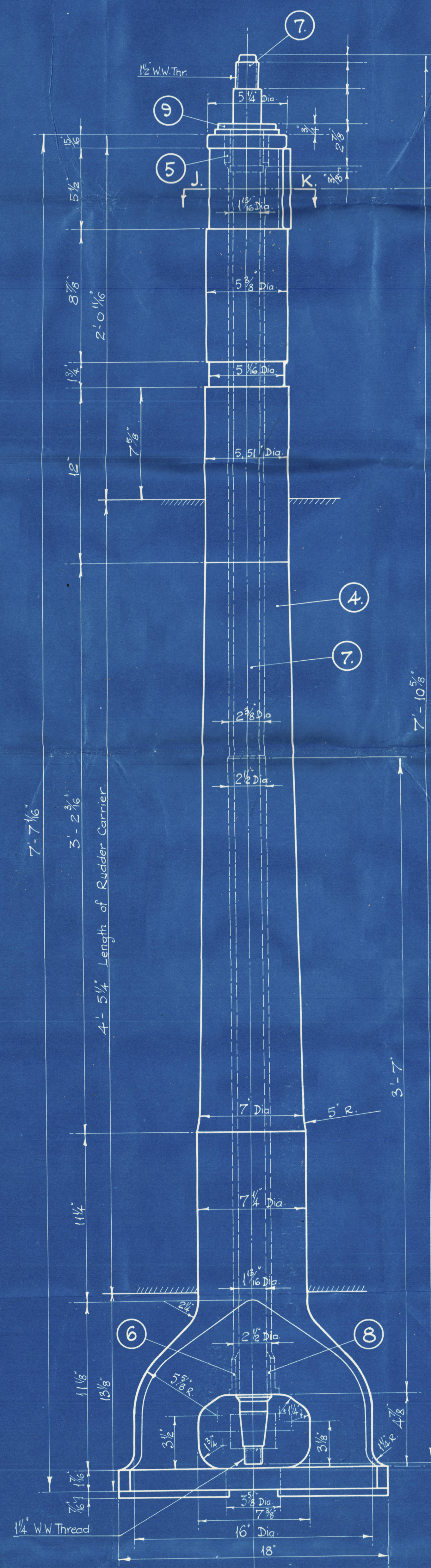
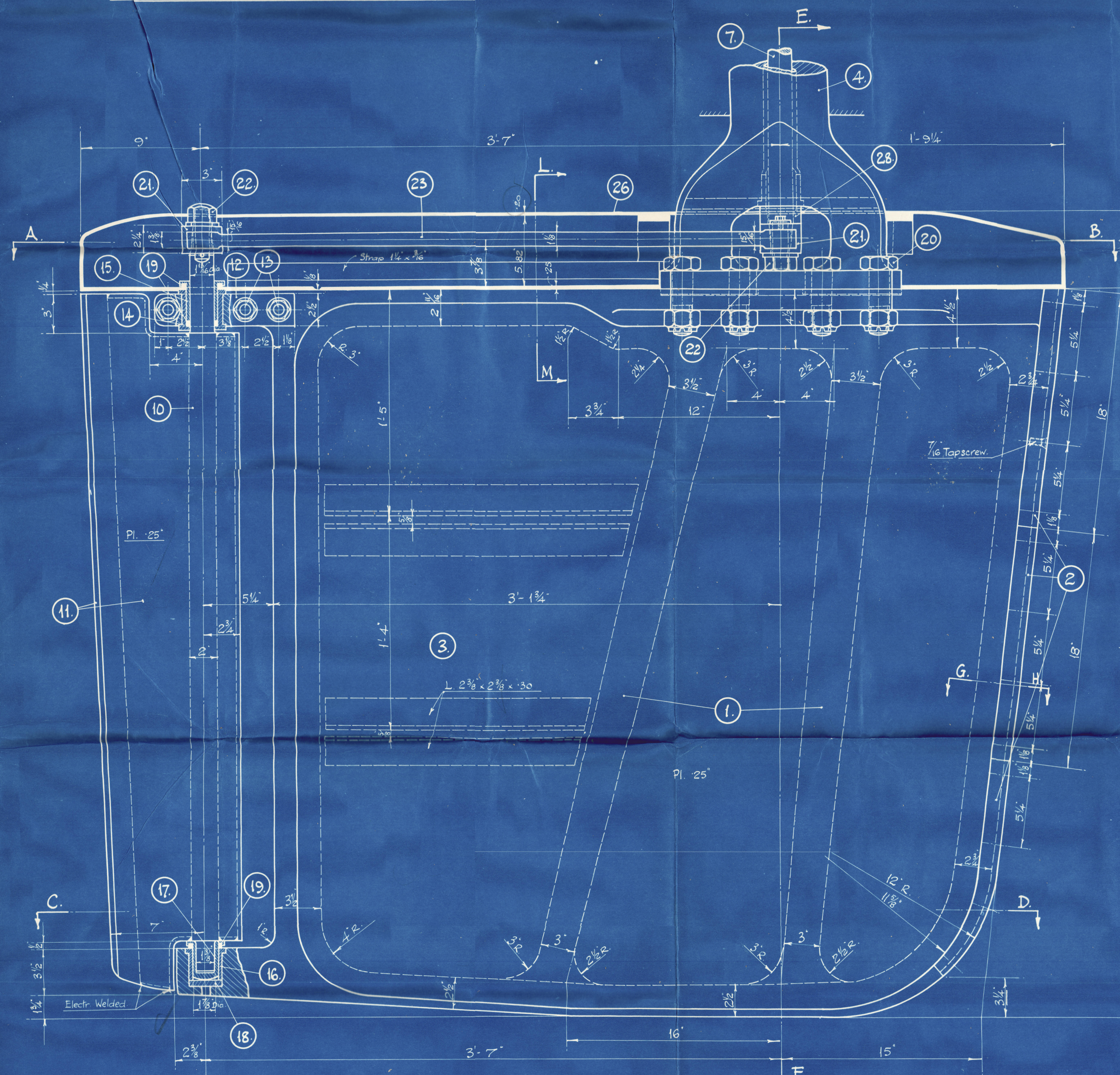
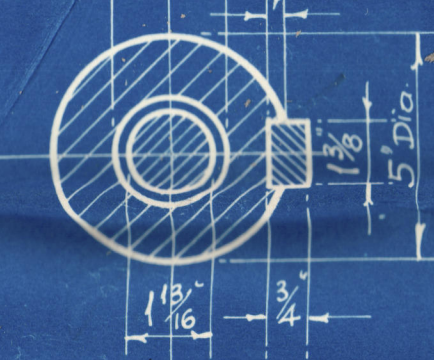


# FLETTNER - RUDDER AND RUDDERSTOCK.

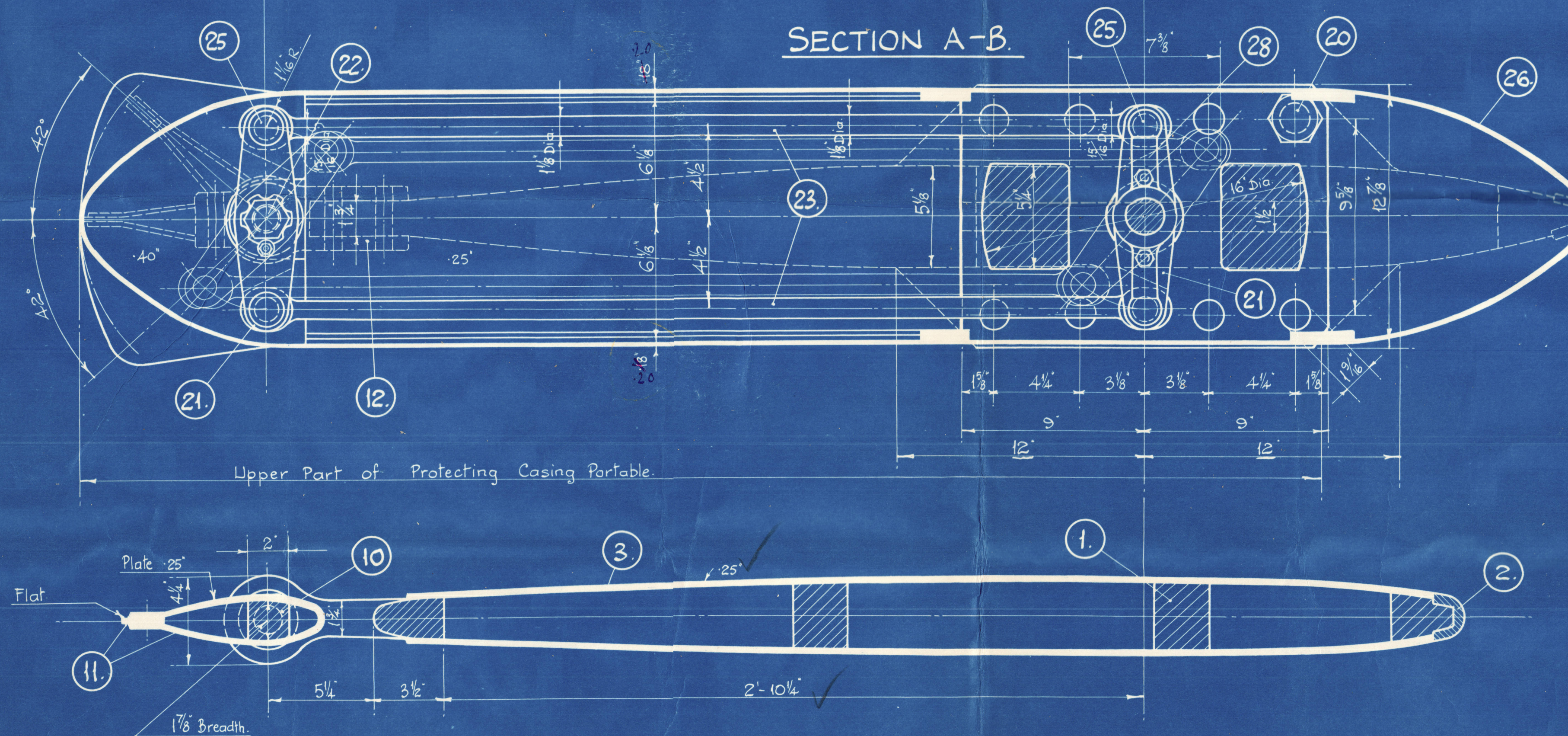
SCALE: 3" = 1 FOOT &c FULL SIZE.



SECTION J-K.

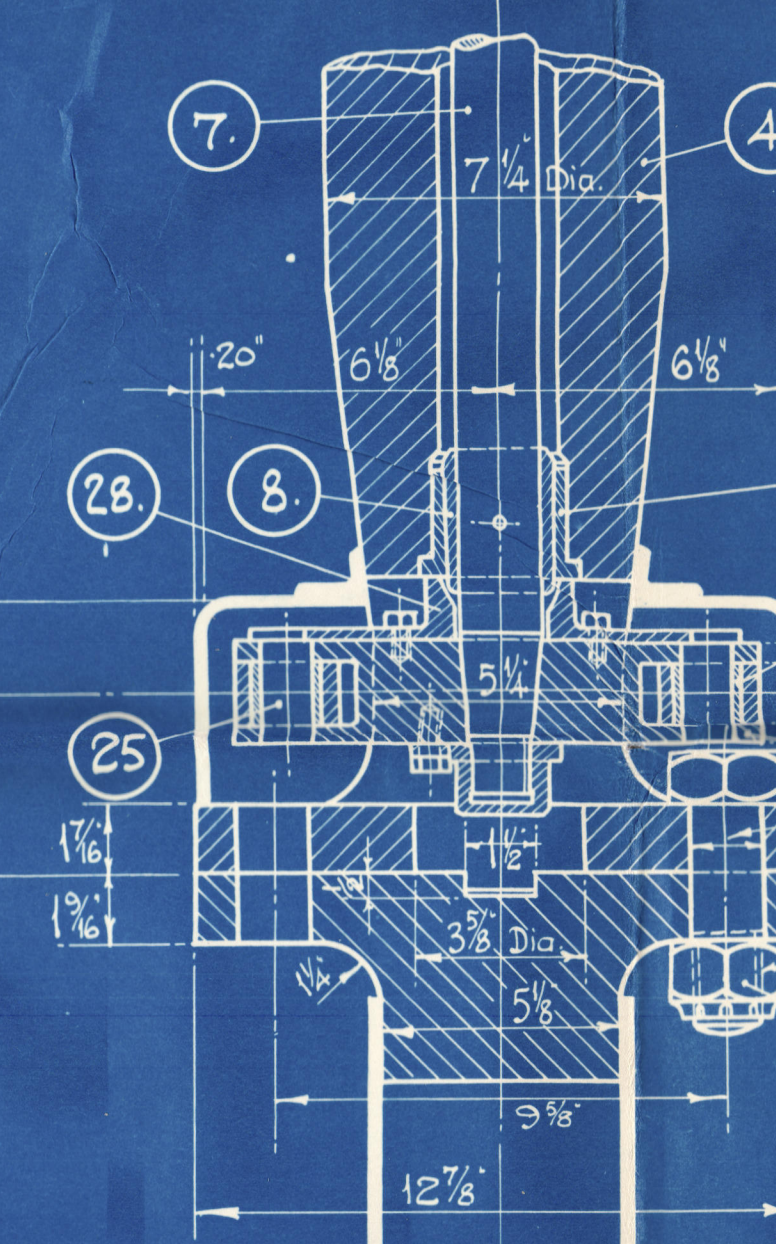


SECTION A-B.

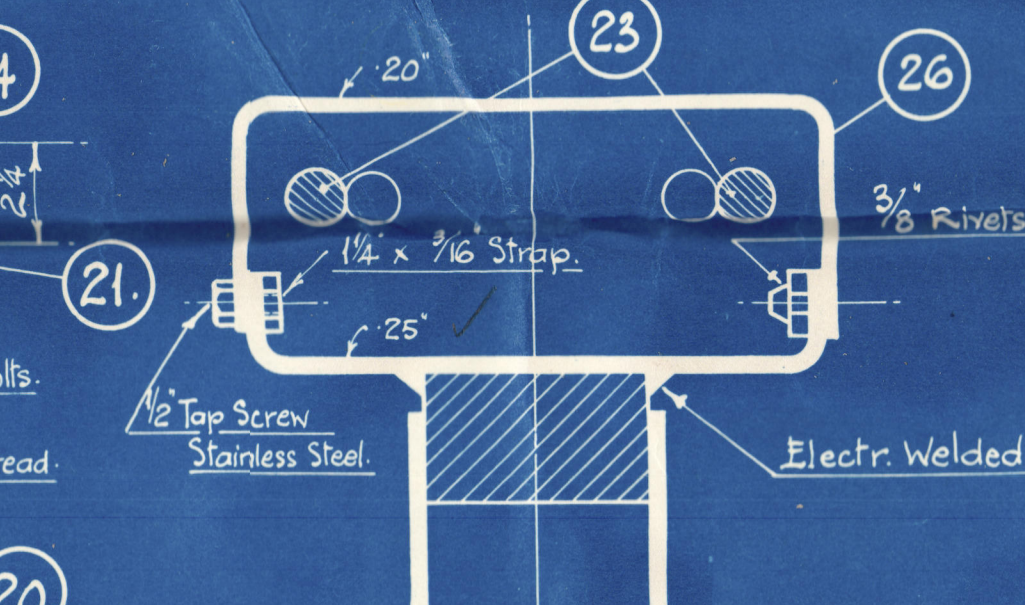


SECTION C-D.

SECTION E-F.



SECTION L-M.

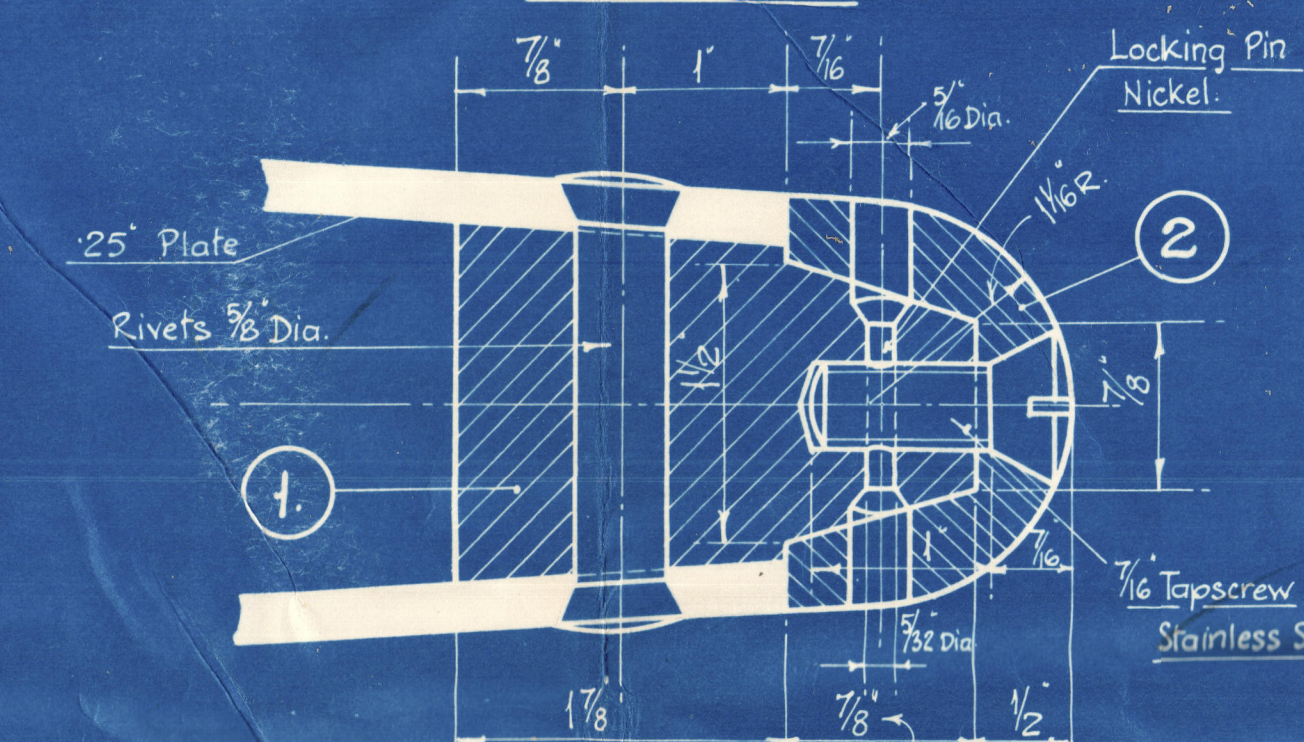


Nos OFF FOR ONE SHIP.					
SYMBOL	N <sup>o</sup> OFF	DESCRIPTION.	MATERIAL.	REMARKS.	TENSILE STRENGTH TONS / IN <sup>2</sup>
(1)	2	Rudderframe.	Cast Steel.		
(2)	6	Zinc Protection	Zinc		
(3)	-	Rudderplating with Angles.	S.M. Steel.		
(4)	2	Rudderstock.	5 Per Cent Nickel Alloy Steel.	Forged Down from an Ingot.	50 20
(5)	2	Bush in Rudderstock. Above.	Brass.		
(6)	2	" " " " Under.	Stainless Steel.	Hardened.	
(7)	2	Spindle for Fin.	S.M. Steel.		C <sup>A</sup> 32 C <sup>A</sup> 28
(8)	2	Sleeve for Spindle. Under.	Stainless Steel.		
(9)	2	" " " " Above.	"		
(10)	2	Fin Stock.	S.M. Forged Steel.		C <sup>A</sup> 32 C <sup>A</sup> 28
(11)	-	Finplating and Flat Steel.	S.M. Steel.		
(12)	2	Upper Bearing for Fin (in Halves).	S.M. Forged Steel.		
(13)	6	1/2" Screwbolt for N <sup>o</sup> 12.	Stainless Steel.	Fitted Bolts.	C <sup>A</sup> 38 C <sup>A</sup> 25
(14)	2	Bush for N <sup>o</sup> 12 (in Halves).	"	Hardened.	
(15)	2	Sleeve for Finstock. Above.	"		
(16)	2	Bush for Lower Fin Bearing.	"	Hardened.	
(17)	2	Sleeve for Finstock Under.	"		
(18)	2	Disk for Lower Fin Bearing.	"	Hardened.	
(19)	6	Ring for Fin Bearings.	Leather.		
(20)	16	Coupling Bolt with Nut.	Stainless Steel.	1 1/2" W.W. Thread.	C <sup>A</sup> 38 C <sup>A</sup> 25
(21)	4	Yoke.	"		
(22)	4	Capnut for Yoke with Lock Screw.	"		
(23)	4	Connection Rod.	"		
(24)	8	Bush for N <sup>o</sup> 23.	"	Hardened.	
(25)	8	Pin " " " "	"		
(26)	2	Protecting Casing.	S.M. Steel.		
(28)	2	Distance Piece (in Halves).	"		

To Lloyd's and B.O.T. Requirements.

SECTION G-H.

FULL SIZE.



NOTICE.

**RYVETING:** All Rivets in Rudderplating Resp. Rudderframe are 5/8" Dia. Through Rivets Countersunk. Pitch of Rivets in Outer Rudderframe (At the Outer Edges of Plating) 7". All other Rivets in Rudderplating spaced about 3 3/4" apart.

The Inside of the Plates of Rudder and Fin to be covered with Bitumastic.

This measure has been altered and must be rectified in Drawing N<sup>o</sup> 2270. "Rudder Frame"

Area of One Rudder, Total = 28.10 Sq. Ft.  
 Area of One Rudder without Fin = 24.44 "  
 Area of Fin = 3.66 "  
 Speed of Vessel = 12 Knots.

F. W. ROWLANDS & CO.

PROJ. A 1846.  
 DRAWING N<sup>o</sup> 2265.



<sup>16</sup>  
Cammell Laird & Co  
999.

Hettner Rudder &  
Stock

S. S. Royal Daffodil II  
LIVERPOOL  
Report No. 104171



© 2020

Lloyd's Register  
Foundation