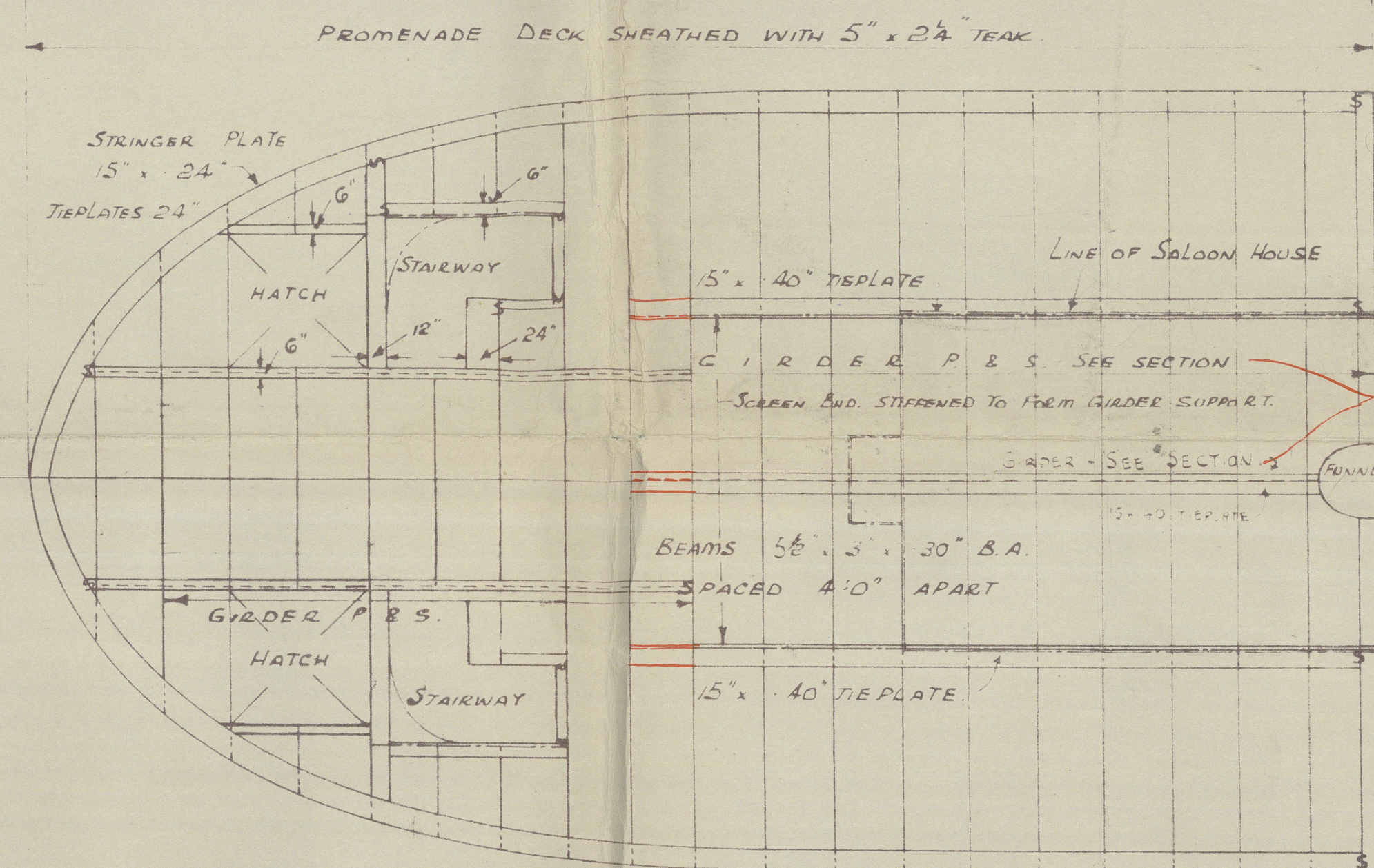
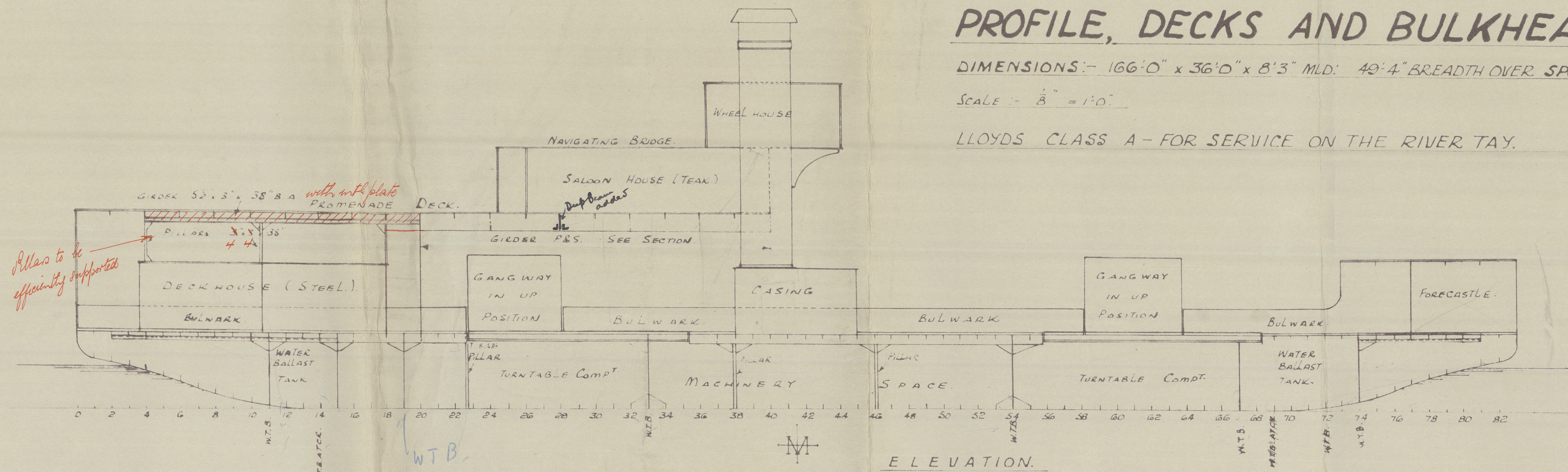


YARD N^o. 550.
MOTOR FERRYBOAT.
PROFILE, DECKS AND BULKHEADS.

DIMENSIONS:- 166'0" x 36'0" x 8'3" MLD. 49'4" BREADTH OVER SPONSONS.

SCALE - $\frac{1}{8}" = 1'0"$

LLOYDS CLASS A - FOR SERVICE ON THE RIVER TAY.



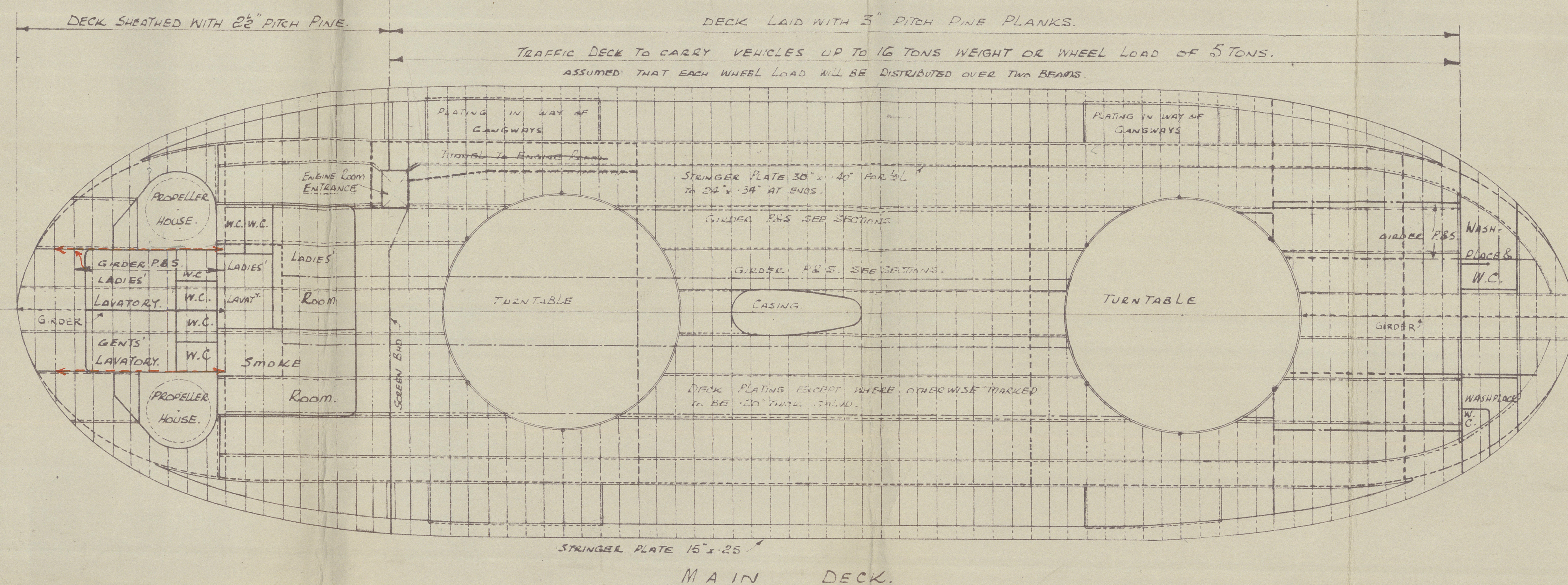
PROMENADE DECK.

SEE SEPARATE PLAN FOR SCANTLINGS AND ARRANGEMENTS OF TURNABLES, AND GIDERS AND PILLARS IN WAY.

FORECASTLE BUD. PLATES 24"
 DECK ANGLE 6'3" x 33"
 STIFFENERS 3' x 28" x 24"
 SPACED 30" APART.

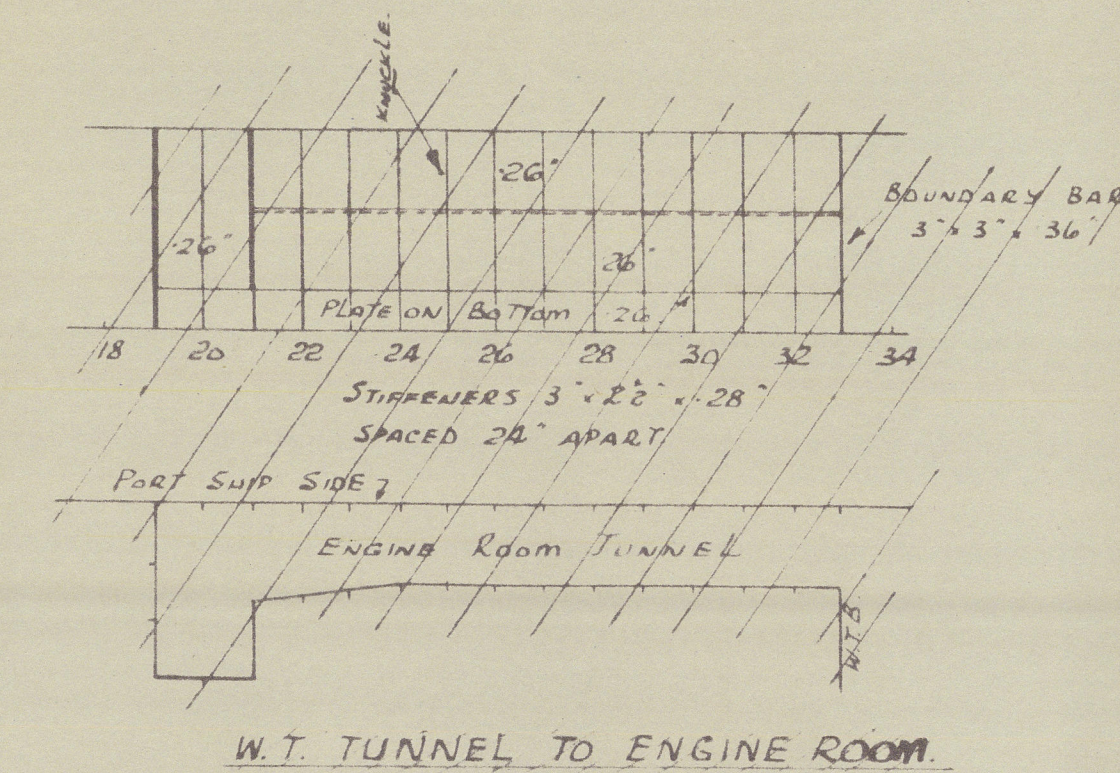
BEAMS 42' x 3' x 34" SPACED 4'0" APART.
 STRINGER PLATE 15' x 24"
 PLATING 20"
 STRINGER ANGLE 23' x 28' x 26".

FORECASTLE DECK.

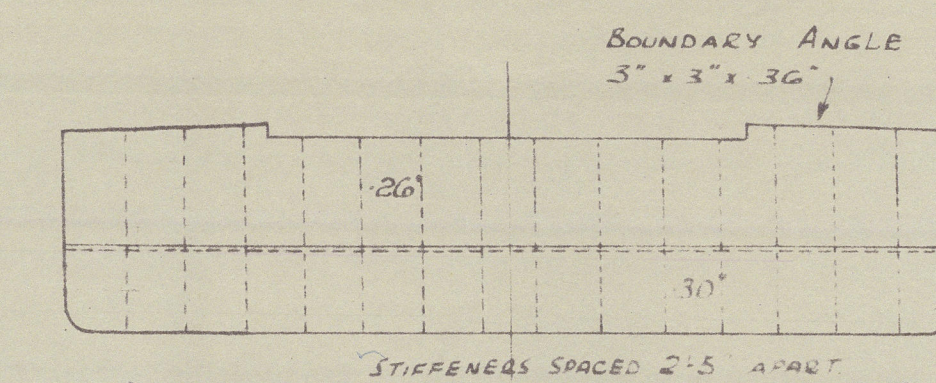


MAIN DECK.

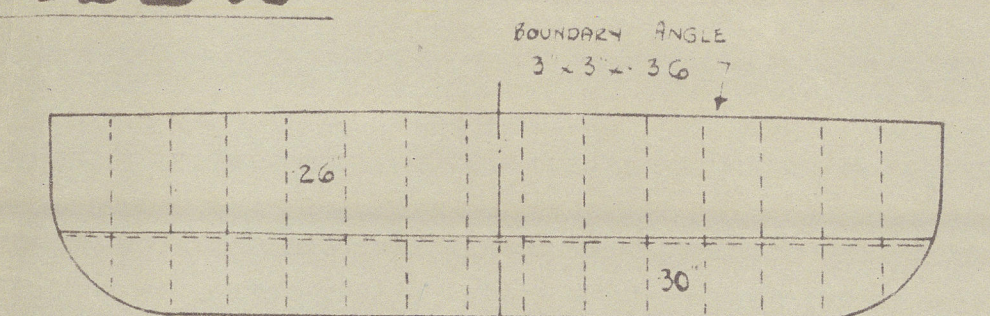
FLEMING & FERGUSON LTD.
SHIPBUILDERS & ENGINEERS
PHOENIX WORKS
PAISLEY.



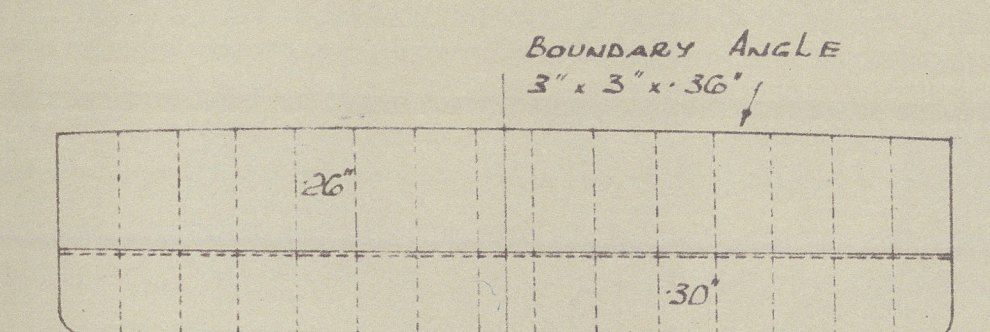
W.T. TUNNEL TO ENGINE ROOM.



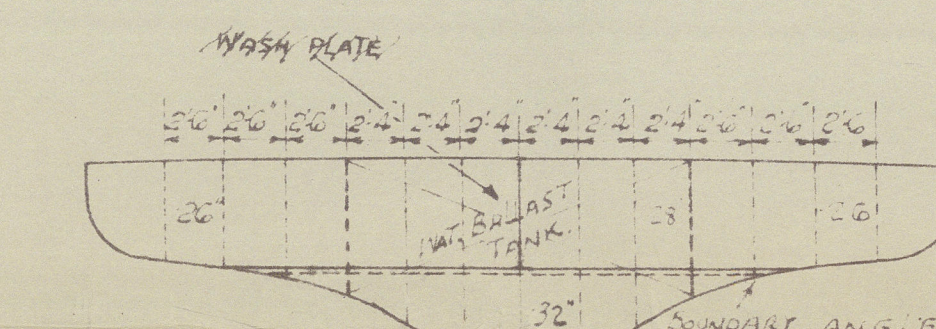
W.T. BULKHEAD No. 33.
 STIFFENERS 4' x 28" x 30" NO BRACKETS.



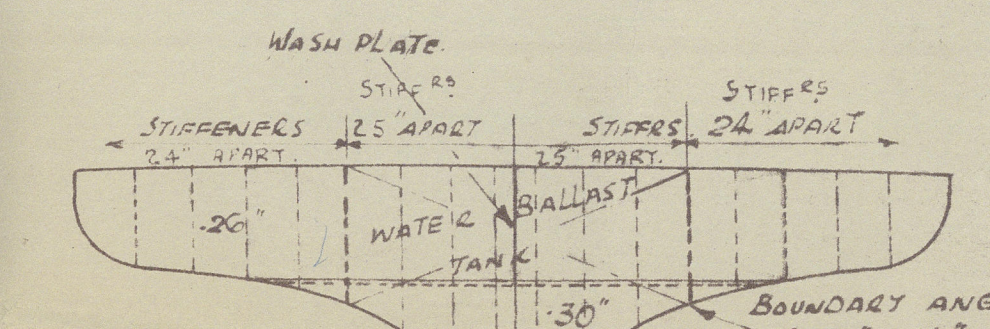
W.T. BULKHEAD No. 13.
 STIFFENERS 4' x 28" x 30".
 SPACED 2'5" APART - NO BRACKETS.



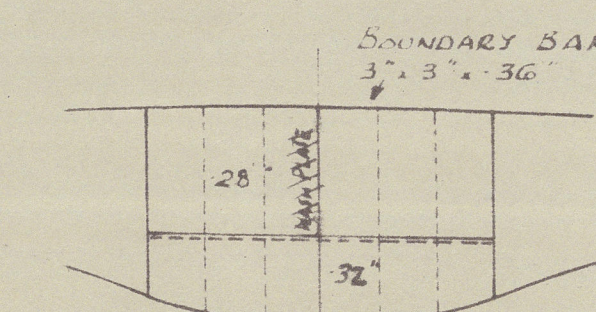
W.T. BULKHEAD No. 54.
 STIFFENERS 4' x 28" x 30".
 SPACED 2'5" APART - NO BRACKETS.



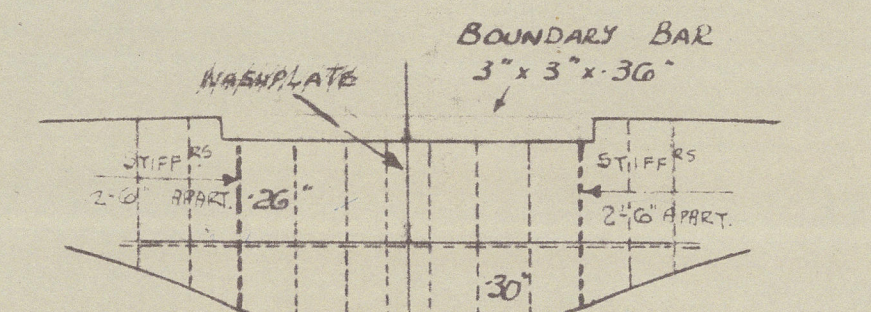
W.T. BULKHEAD No. 11.
 STIFFENERS 3' x 3' x 28" BRACKETED.
 TOP AND BOTTOM IN WAY OF TANK.



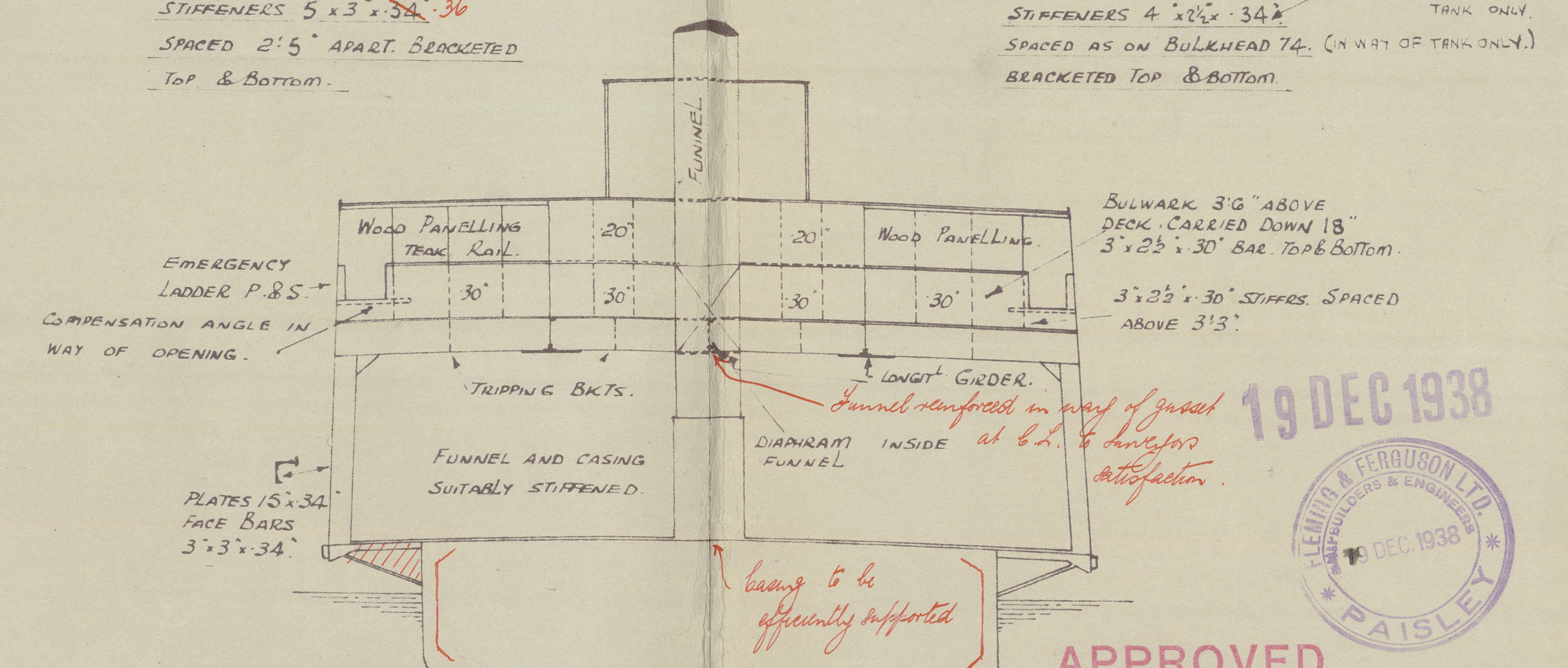
W.T. BULKHEAD No. 74.
 STIFFENERS 3' x 3' x 28" BRACKETED.
 TOP AND BOTTOM IN WAY OF TANK.



W.T. BULKHEAD No. 16.
 STIFFENERS 5' x 3' x 34" x 36".
 SPACED 2'5" APART. BRACKETED.
 TOP & BOTTOM.



W.T. BULKHEAD No. 67.
 STIFFENERS 5' x 3' x 34" x 36".
 SPACED AS ON BULKHEAD 74. (IN WAY OF TANK ONLY).
 BRACKETED TOP & BOTTOM.



SECTION AT FRAME 40.

APPROVED

LLOYD'S REGISTER OF SHIPPING

19 DEC 1938

PAISLEY

550.

14.

amb.

DATE 29/1/38

Foundation

Messrs. Fleming & Ferguson, Ltd.

No. 550

Amended Profile, deck & bulkheads.

No. 5

550 Abercraig
GLASGOW REPORT No. 61681

006797-006808-0244



© 2021

Lloyd's Register
Foundation

006797-006808-0244