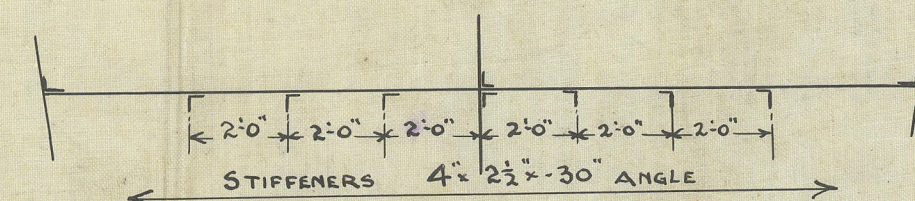
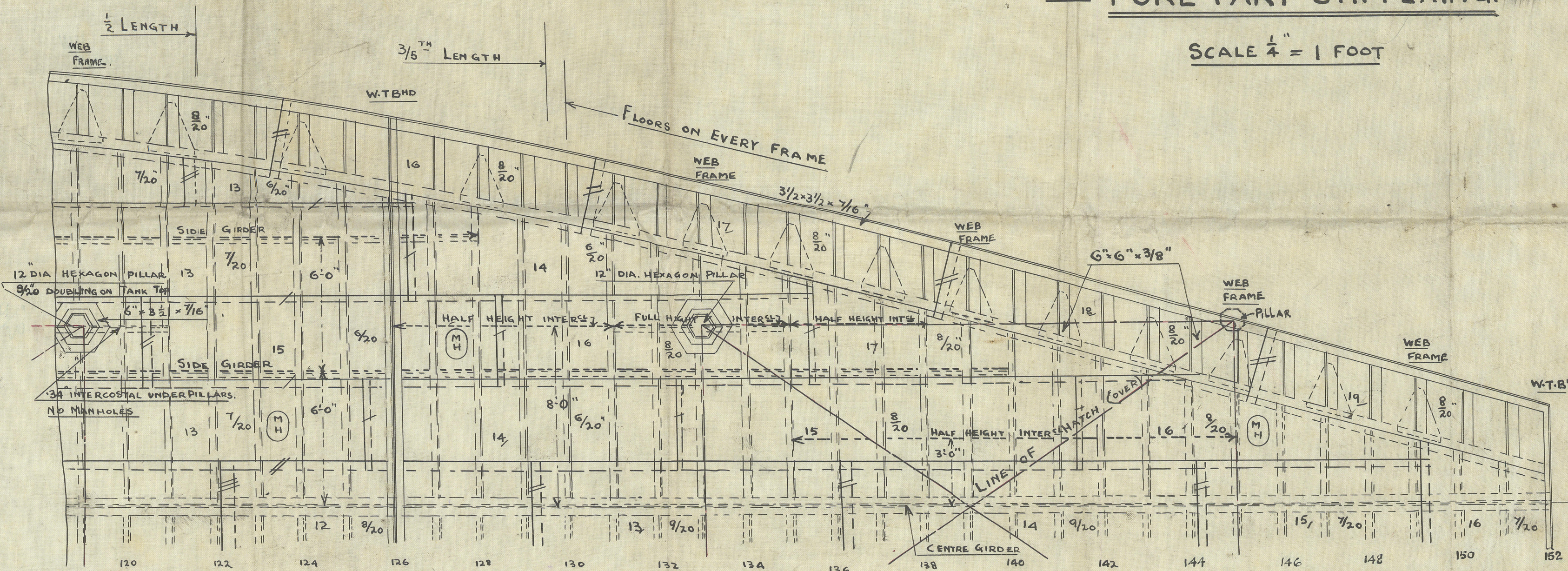


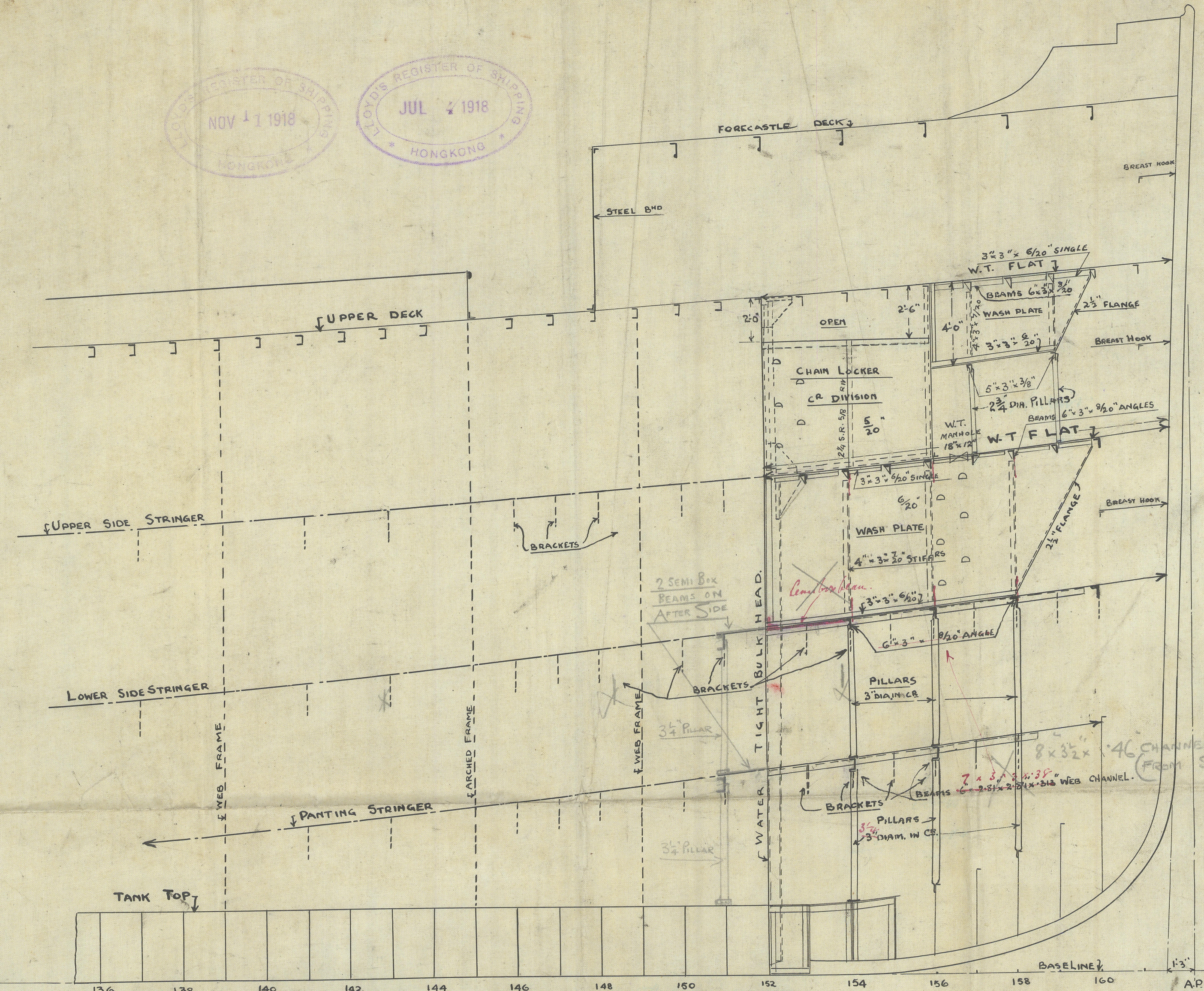
SECTION AT FB NO 156 SHEWING
CHAIN LOCKER BULKHEAD
LOOKING AFT.



SCALE $\frac{1}{4}'' = 1$ FOOT

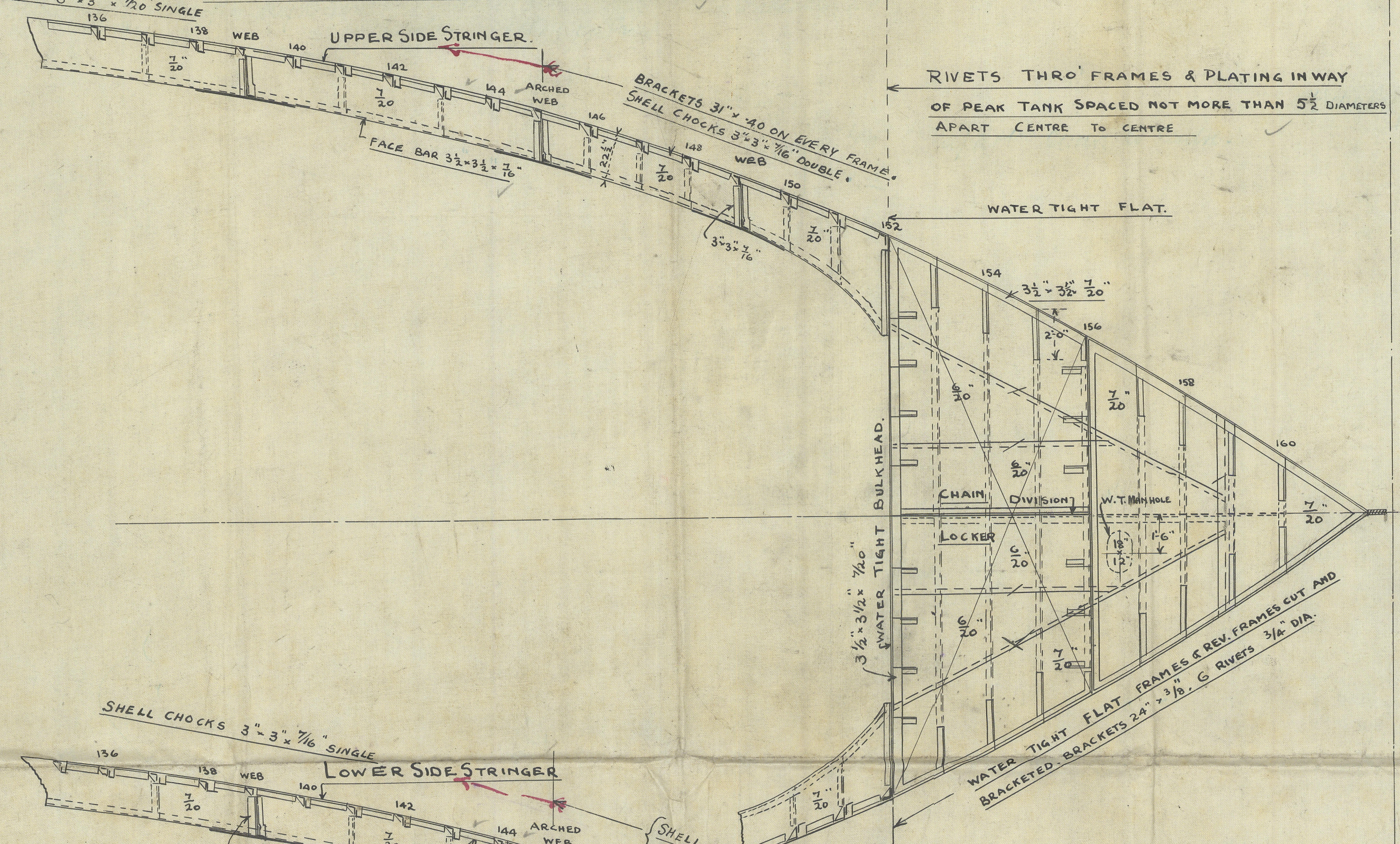


← FRAMES DOUBLED FROM MARGIN PLATE TO MARGIN PLATE FOR $\frac{3}{5}$ LENGTH.
3 STRAKES OF OUTSIDE PLATING NEXT KEEL MIDSHIP THICKNESS
MAINTAINED TO RULE POSITION OF COLLISION BULKHEAD.

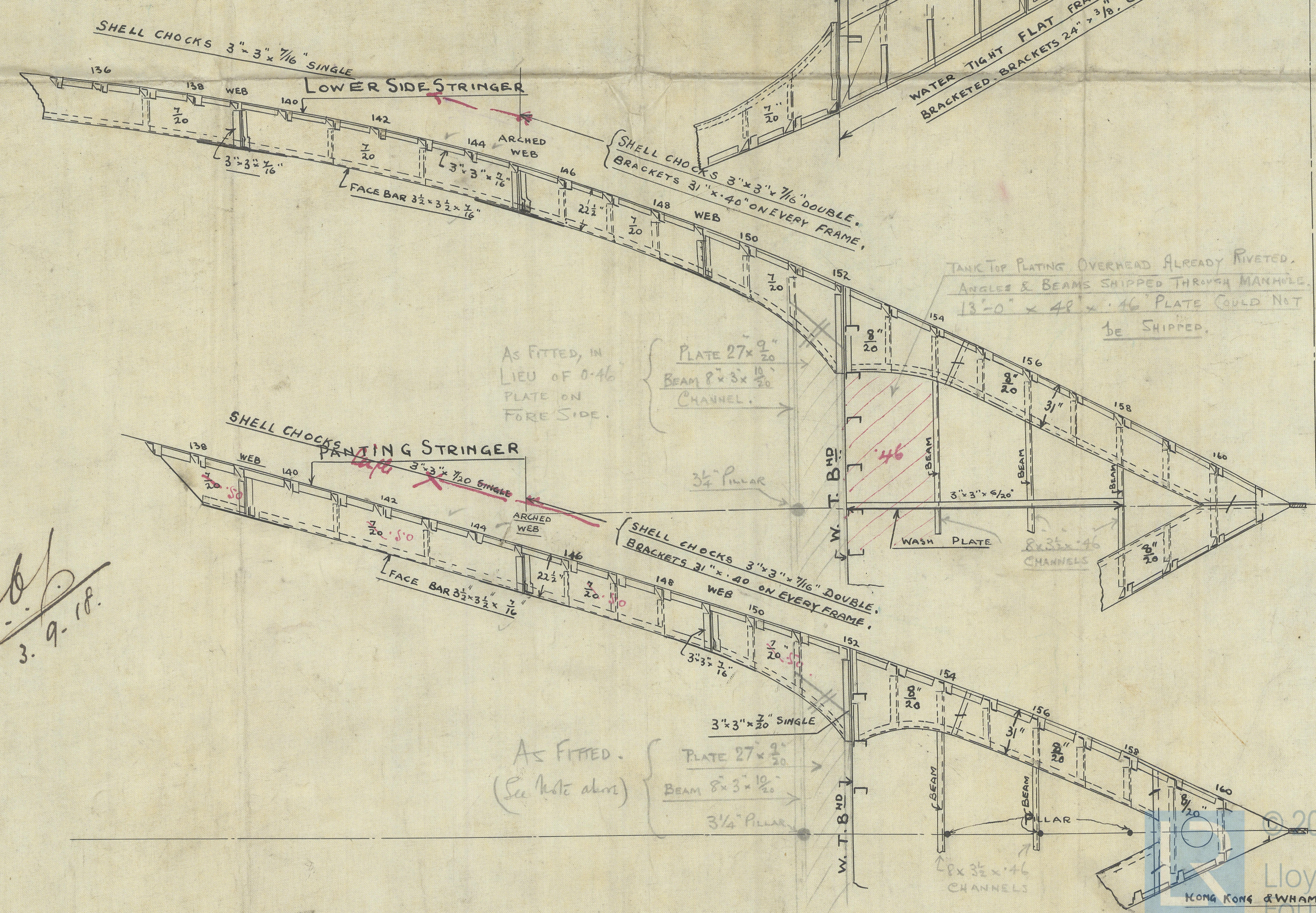


SHELL CHOCKS 3" x 3" x 1/2" RIVETS IN PLAYING & FRAMES ON BOTTOM FORWARD OF $\frac{3}{5}$ th LENGTH SPACED NOT MORE THAN $5\frac{1}{2}$ DIAMETERS CENTRE TO CENTRE.

RIVETS THRO' FRAMES & PLATING IN WAY
OF PEAK TANK SPACED NOT MORE THAN $5\frac{1}{2}$ DIAMETERS
APART CENTRE TO CENTRE ✓



TANK TOP PLATING OVERHEAD ALREADY RIVETED.
ANGLES & BEAMS SHIPPED THROUGH MANHOLE.
13'-0" x 48" x .46" PLATE COULD NOT
be SHIPPED.



AS FITTED. { PLATE $27 \times \frac{9}{16}$
(See Note above) { BEAM $8 \times 3 \times \frac{19}{16}$ }

Fore Part Steffening

H.Kg. 1802.

Grandtun

006787-006796-0276



© 2021

Lloyd's Register
Foundation