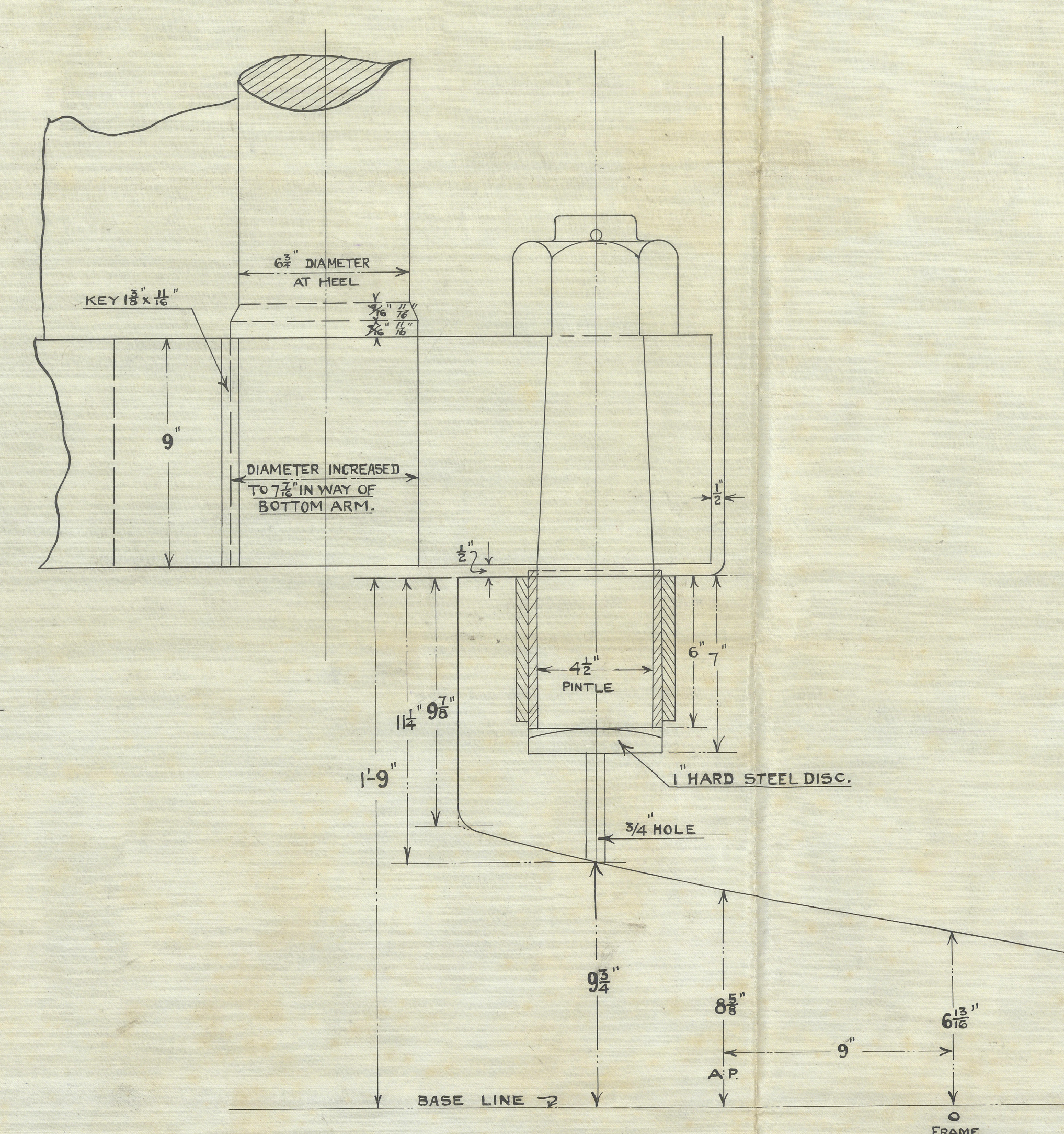
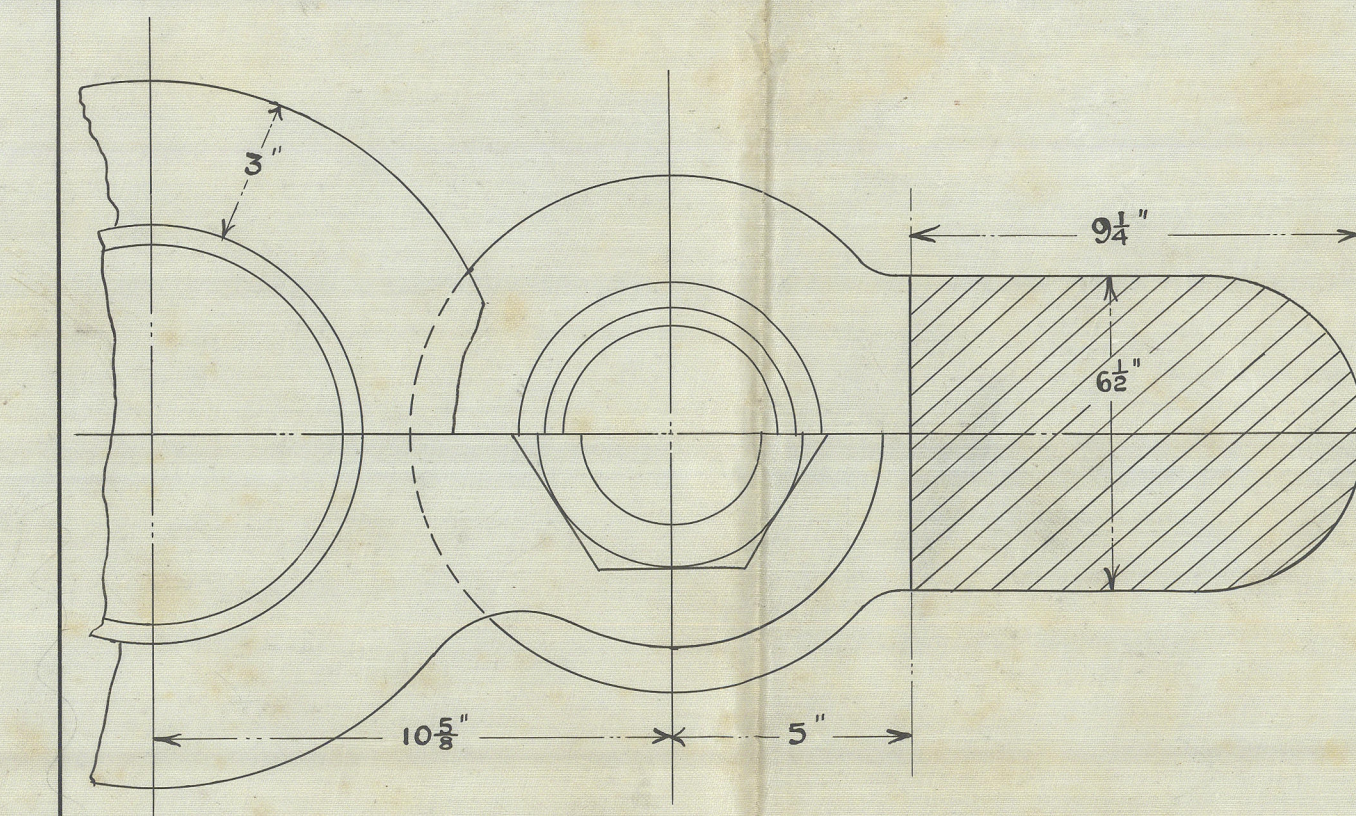


(STERN FRAME) FINISHED WEIGHT TONS CWTs QRS LBS = 17645 LBS.



— DETAIL OF BOTTOM GUDGEON. —
3" SCALE.



REGISTER OF SHIPBUILDING
JUL 4 1918
HONGKONG

BOW CHOCK.

3'-9"

FORECASTLE DECK.

7'-9"

UPPER DECK.

STEM TAPERS FROM 2 1/2" IN THICKNESS AT 22'-0" ABOVE BASE TO 1 1/8" AT HEAD

STEM HEAD ABOVE BASE LINE 46'-0"

22'-0"

2 1/2"

1 1/8"

(TOTAL LENGTH 59'-0" CORRECT LENGTH TO BE TAKEN FROM LOFT)

7'-6" RADIUS

C8 TO C13 REELED.

159

160

161

14'-0"

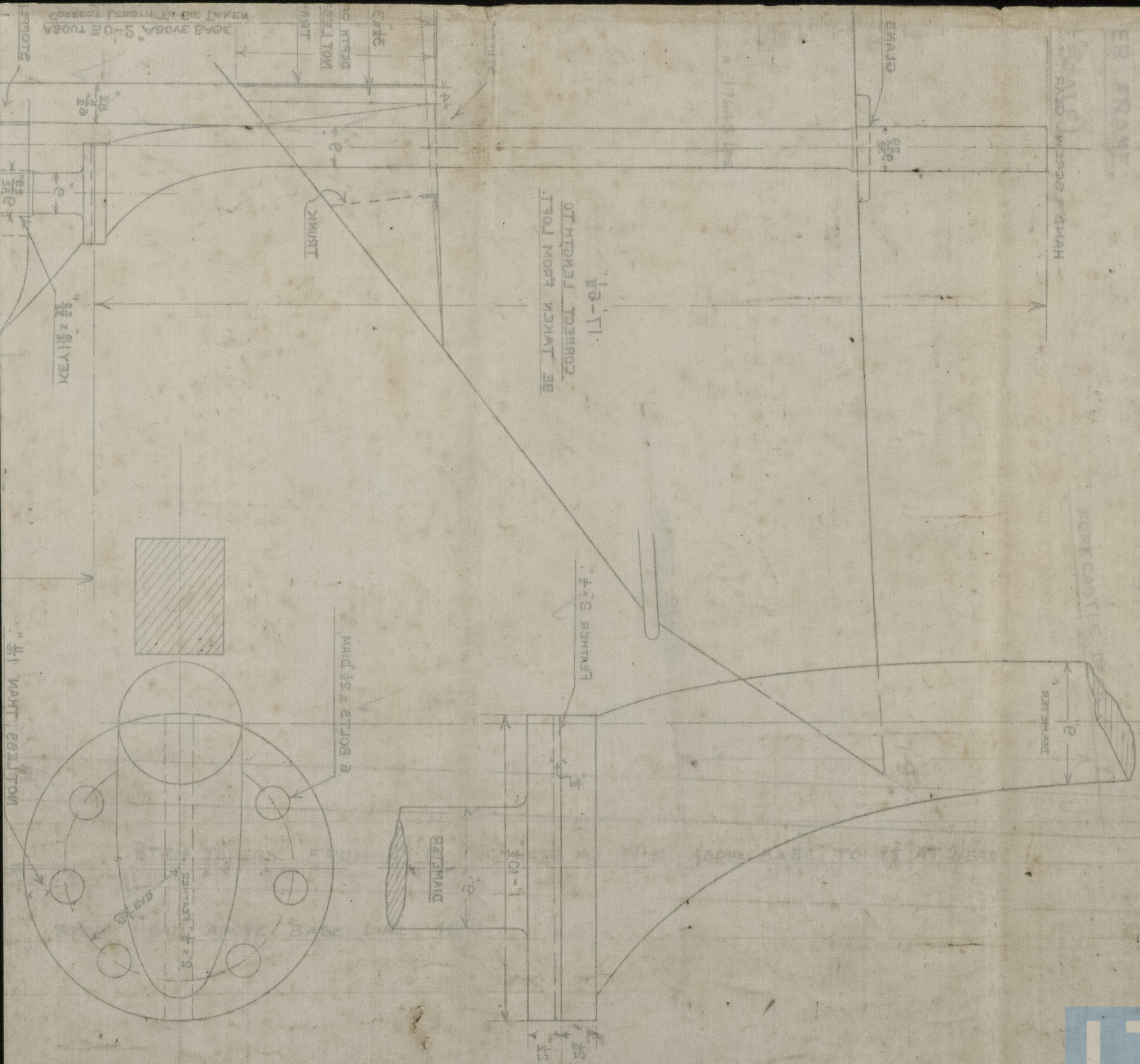
BASE LINE

FRAMES SPACED 24"

2'-3"

SHEER HEIGHT 34'-0"

FORE EDGE WELL ROUNDED - FROM STEM HEAD.



STEM, STERN POST & RUDDER FRAME SHIP No 567.



© 2021

Lloyd's Register
Foundation

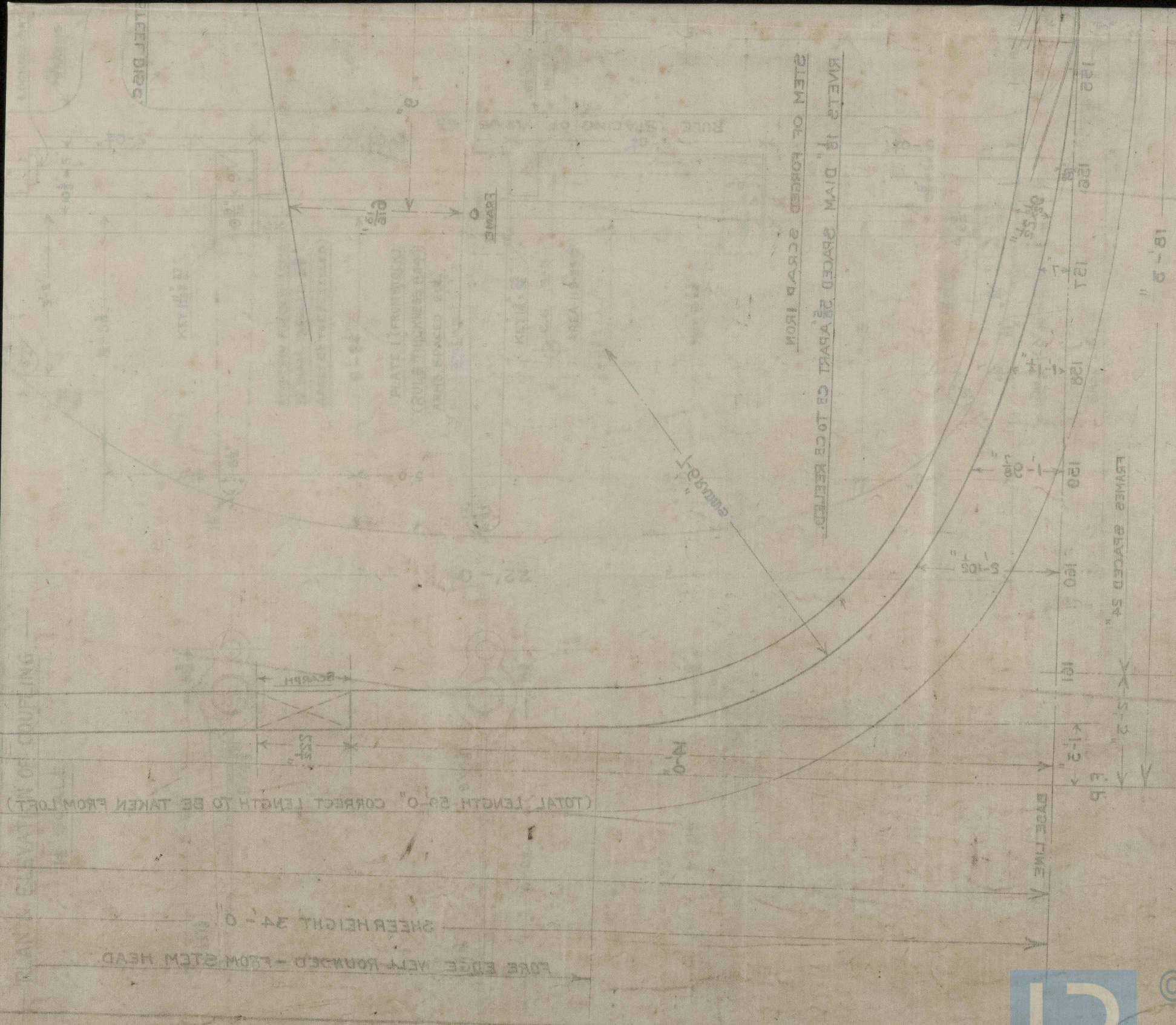
006787-006796-0273

DRAWING NO. 11-11
HONG KONG & WHARF DOCK CO.



© 2021
Lloyd's Register
Foundation

STEM, STERN POST & RUDDER FRAME SHIP NO 561



006782-006796-0273

Nº 667

SINGLE SCREW STEAM

325'-0" BP x 45'-0" x 26'

STEM, STERN POST AND RUDDER

SCALE $\frac{1}{4}$ " = 1 FT (DETAIL $\frac{3}{8}$ " = 1 FT)

Grandlier

Stern post & rudder

H Ky. 1802



© 2021

Lloyd's Register
Foundation

006787-006796-0273