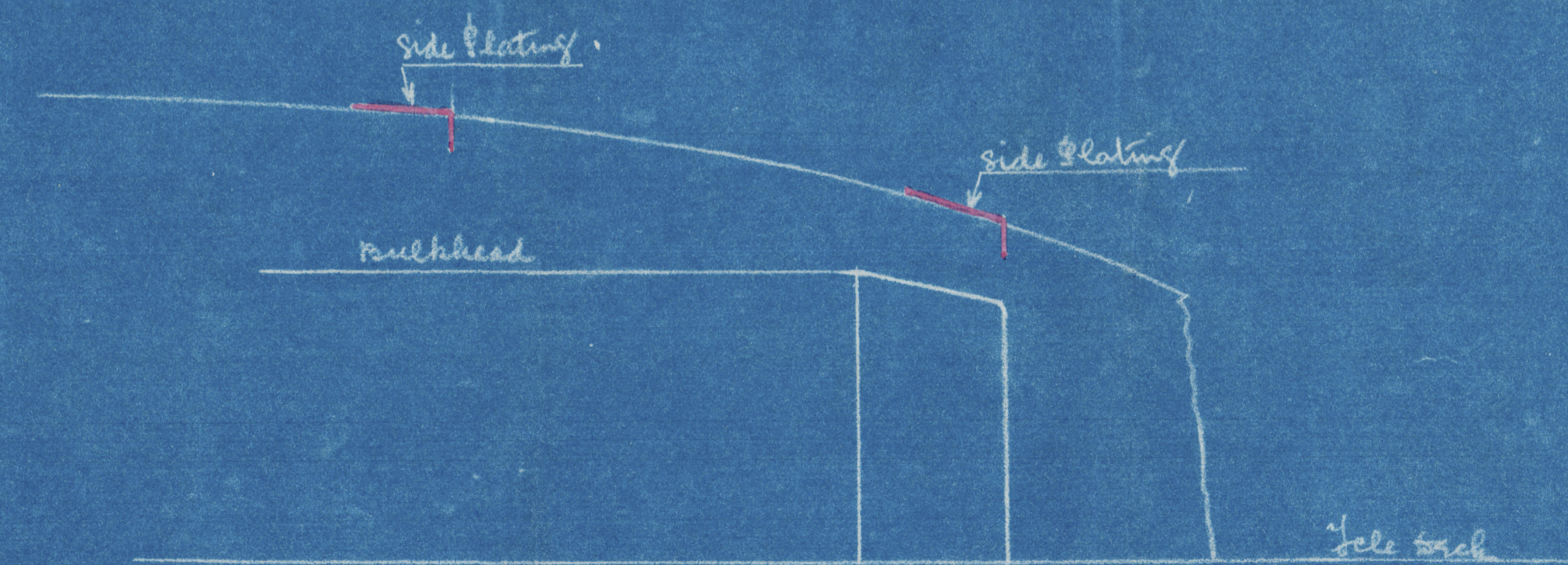
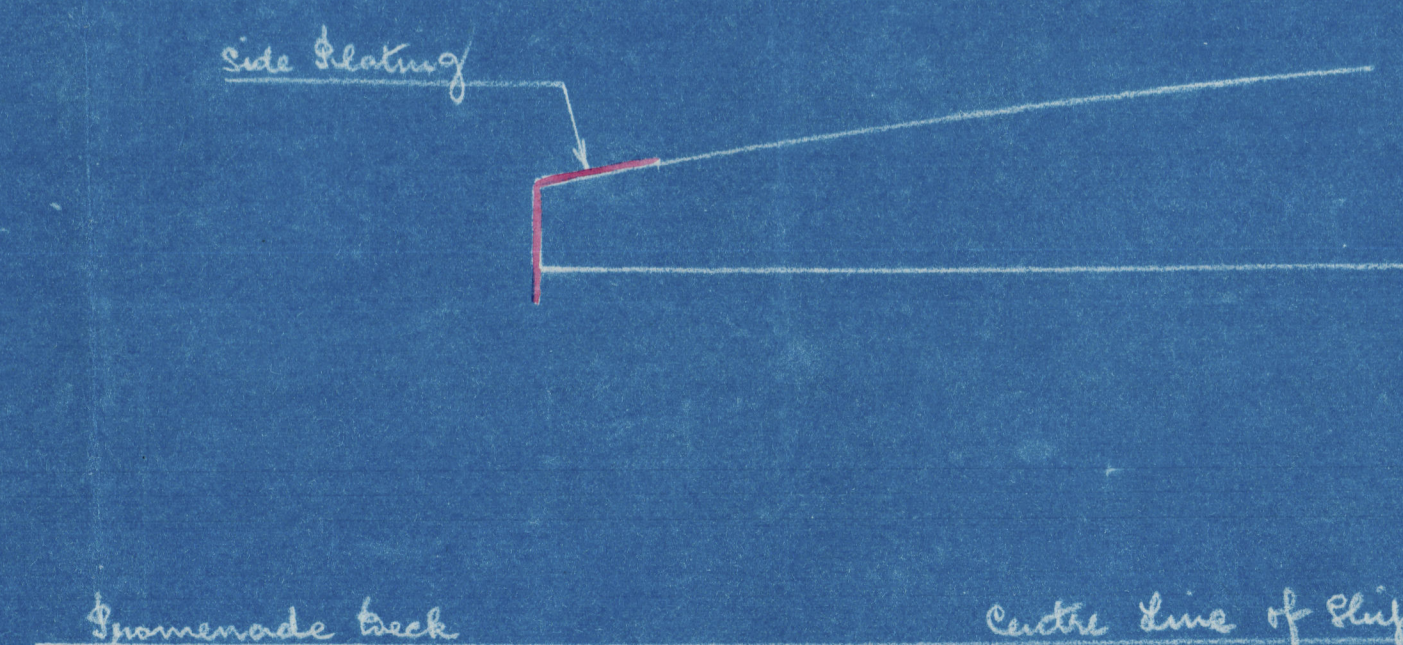
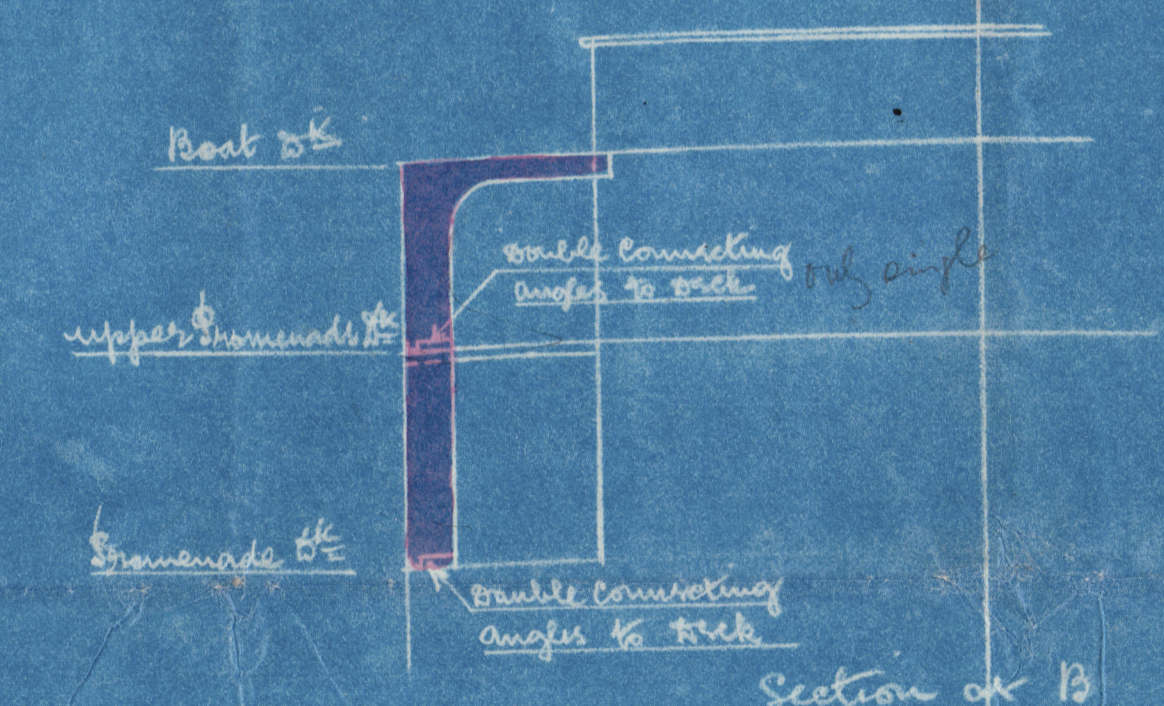
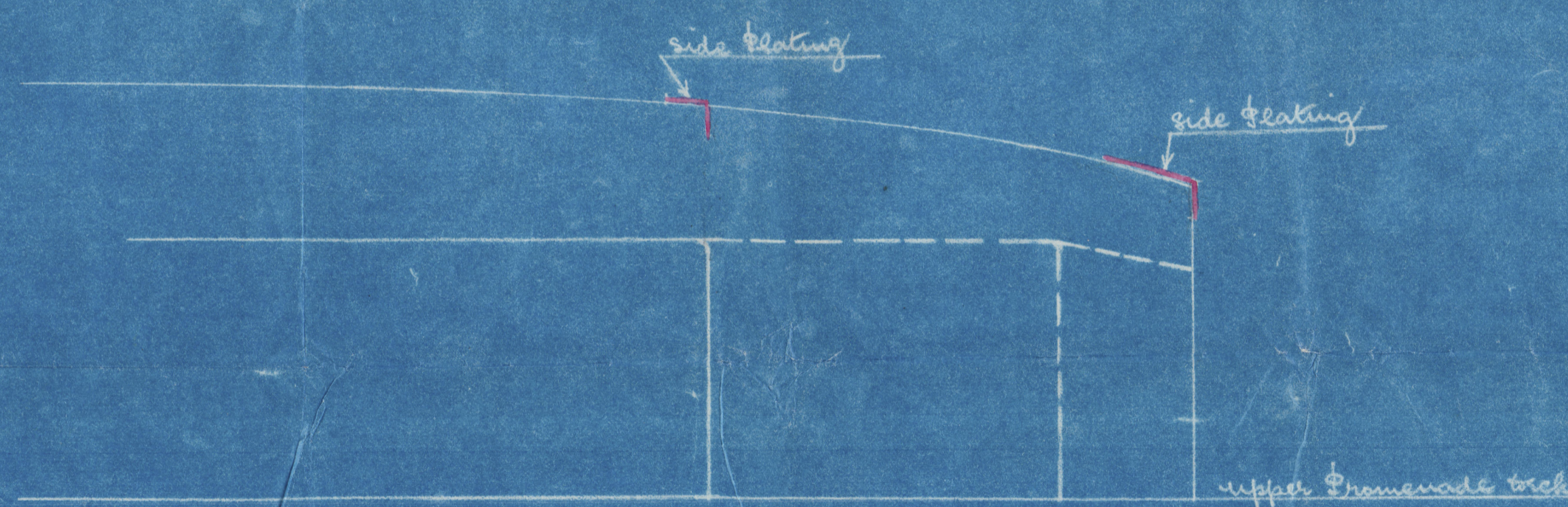
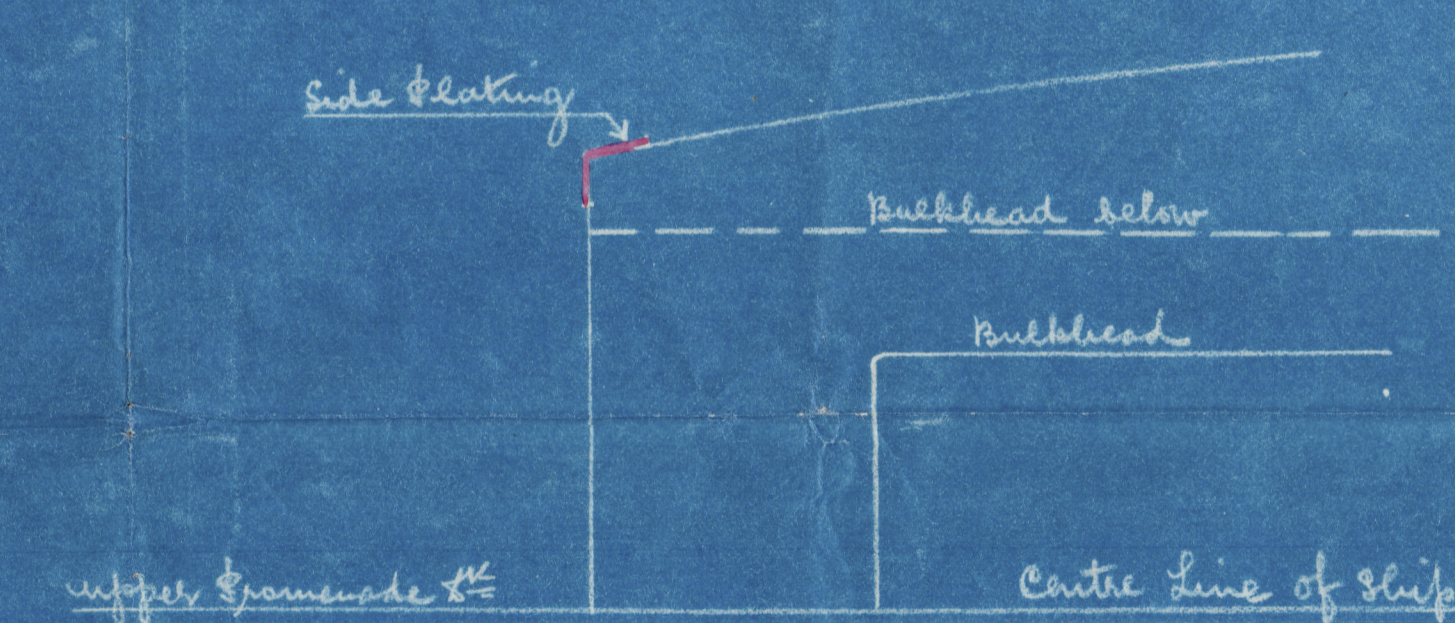
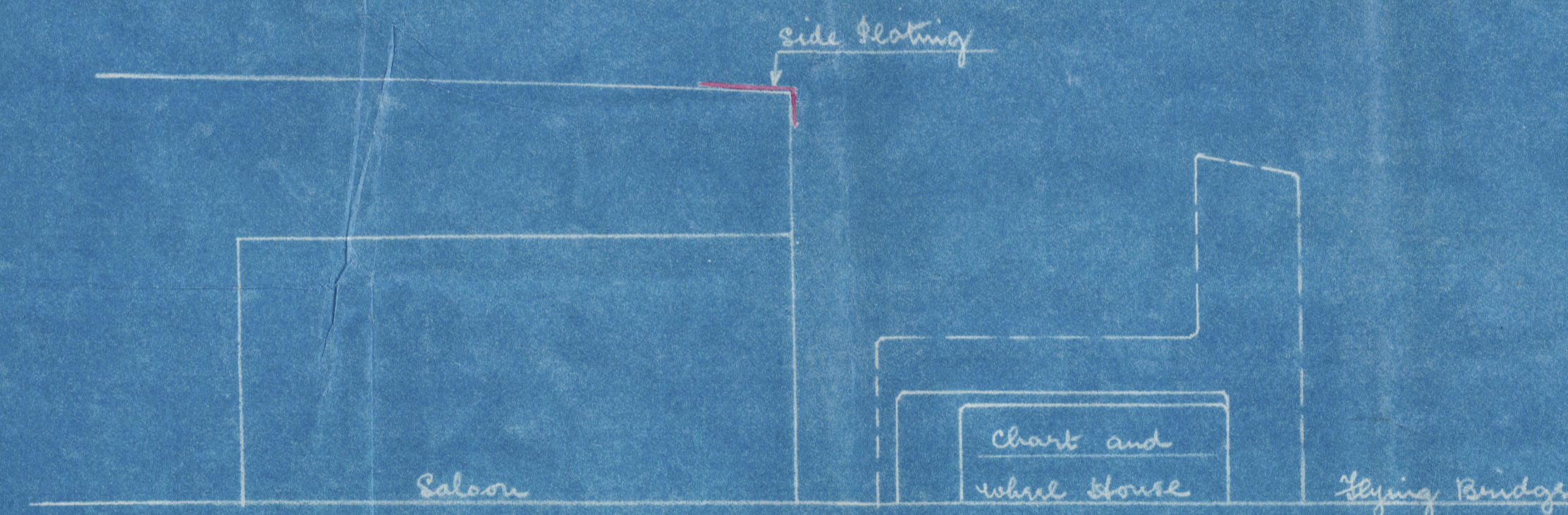
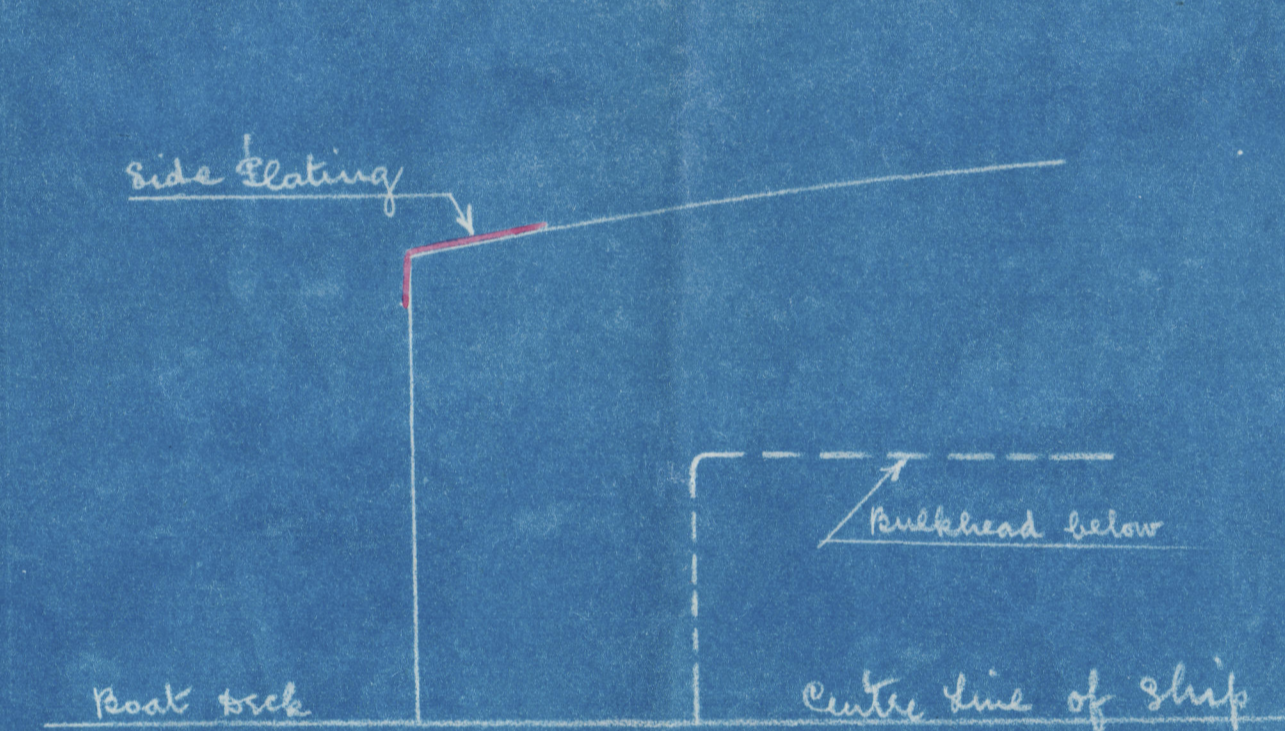
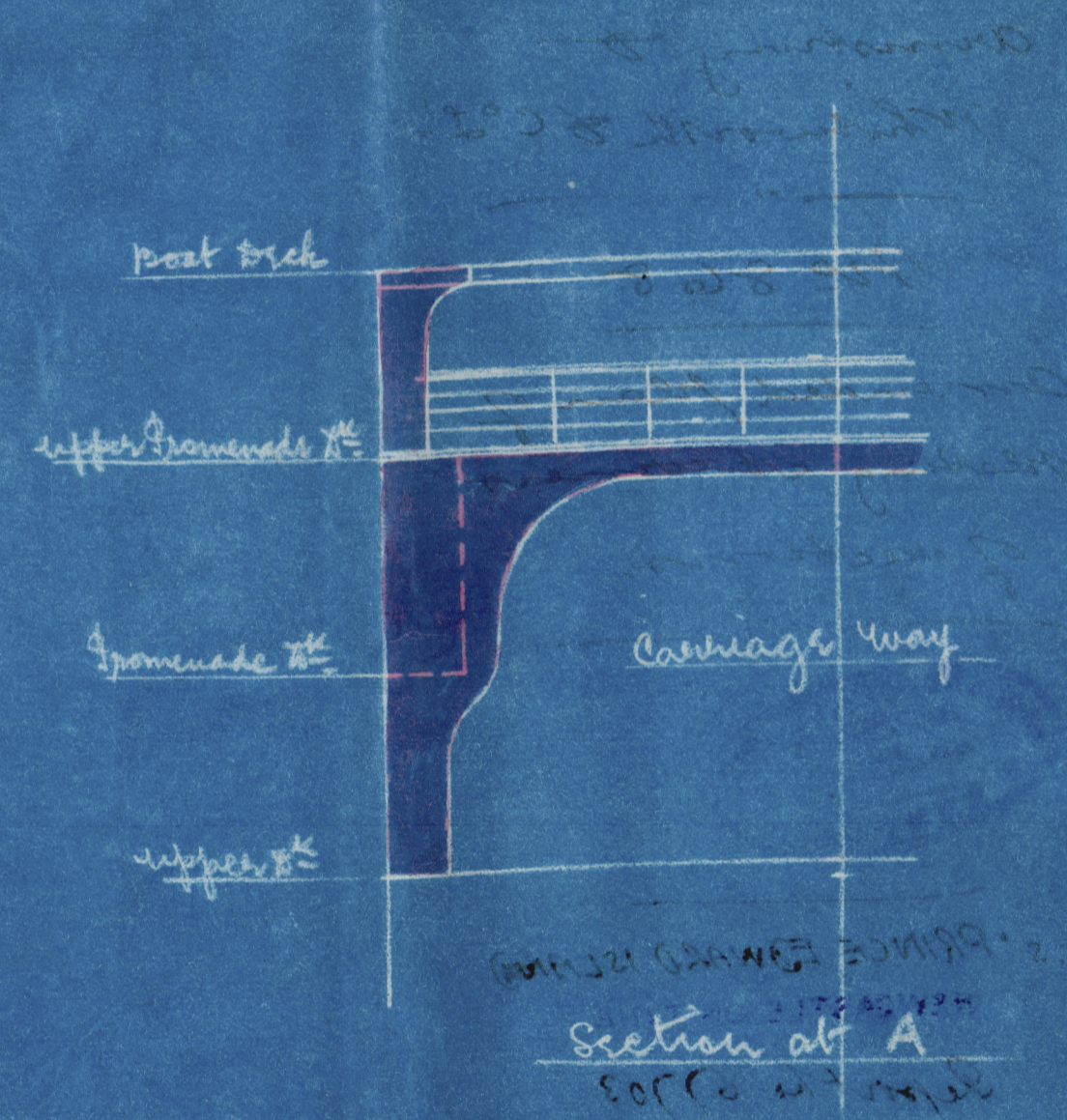
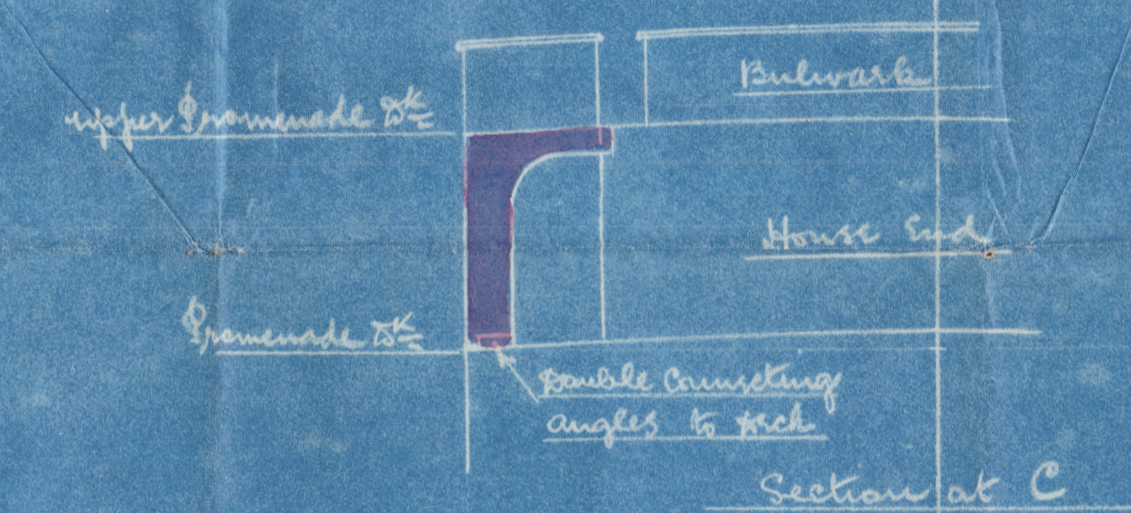
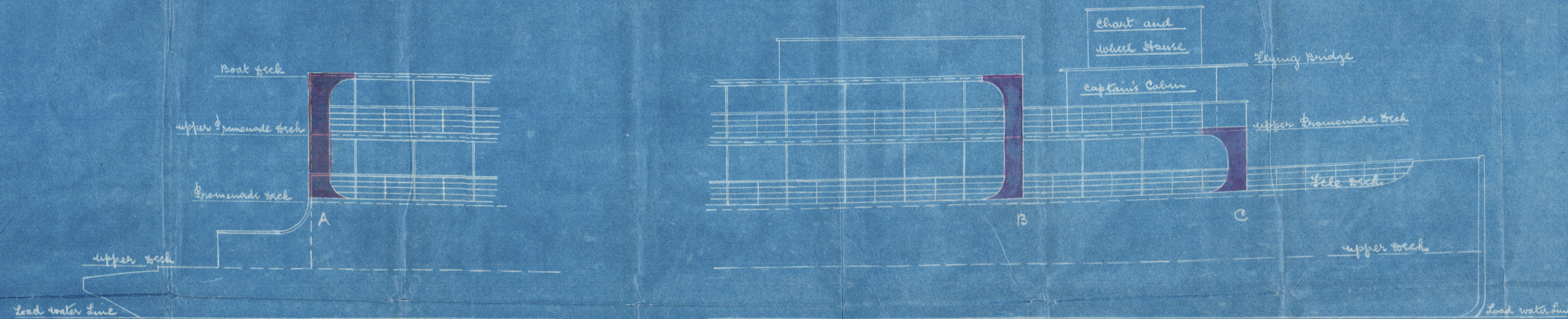
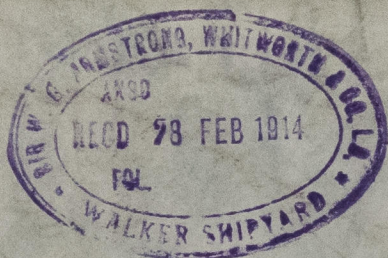


No 868 Ship  
 Arrangement of Plating at Ship's Side at Corners  
 and Ends of Deck Projections  
 Scale 1/8" = 1 foot



Sir W. G. ARMSTRONG, WHITWORTH & CO. LIMITED  
 NEWCASTLE-UPON-TYNE,  
 No 3863 DATE 26.2.14  
 WALKER SHIPYARD.

J.S.S.  
 27.2.14



27/2/14

Lloyd's

Received with Lloyd's

Armstrong &  
Whitworth & Co. Ltd.

No 868.

Amended plan of  
plating at corners  
of sections.



S.S. "PRINCE EDWARD ISLAND"  
NEWCASTLE-ON-TYNE.

Report No 67703



006780-006786-0145