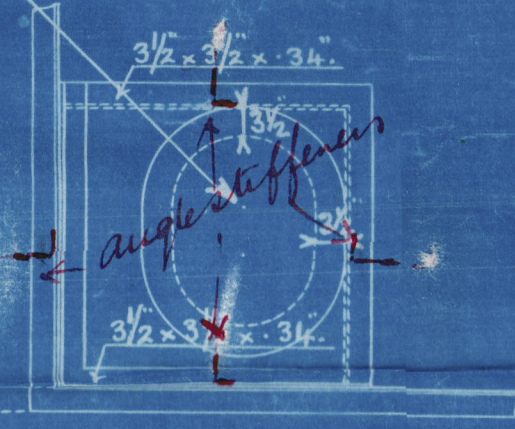


27.5.14
19.6.14

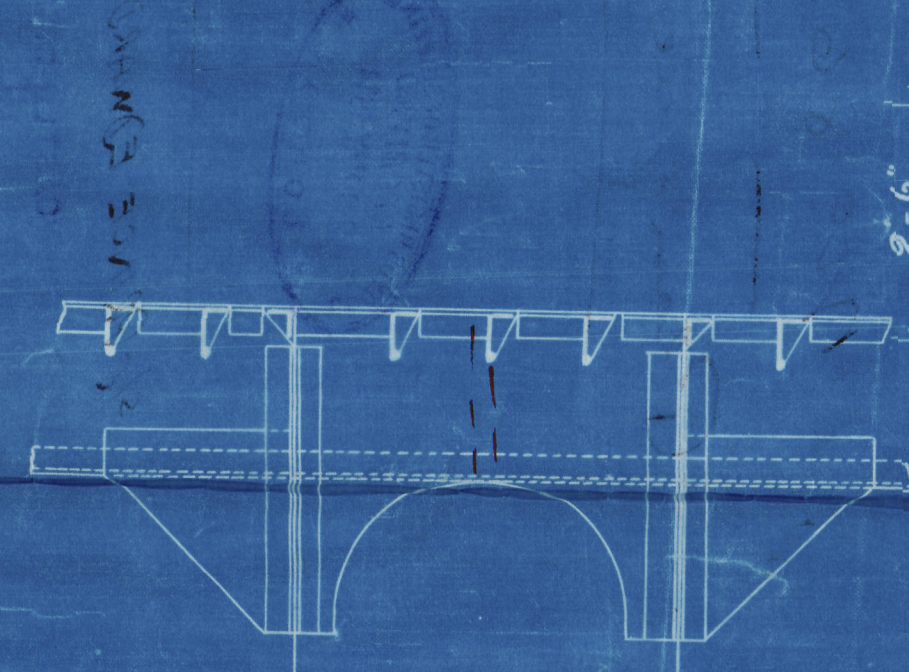
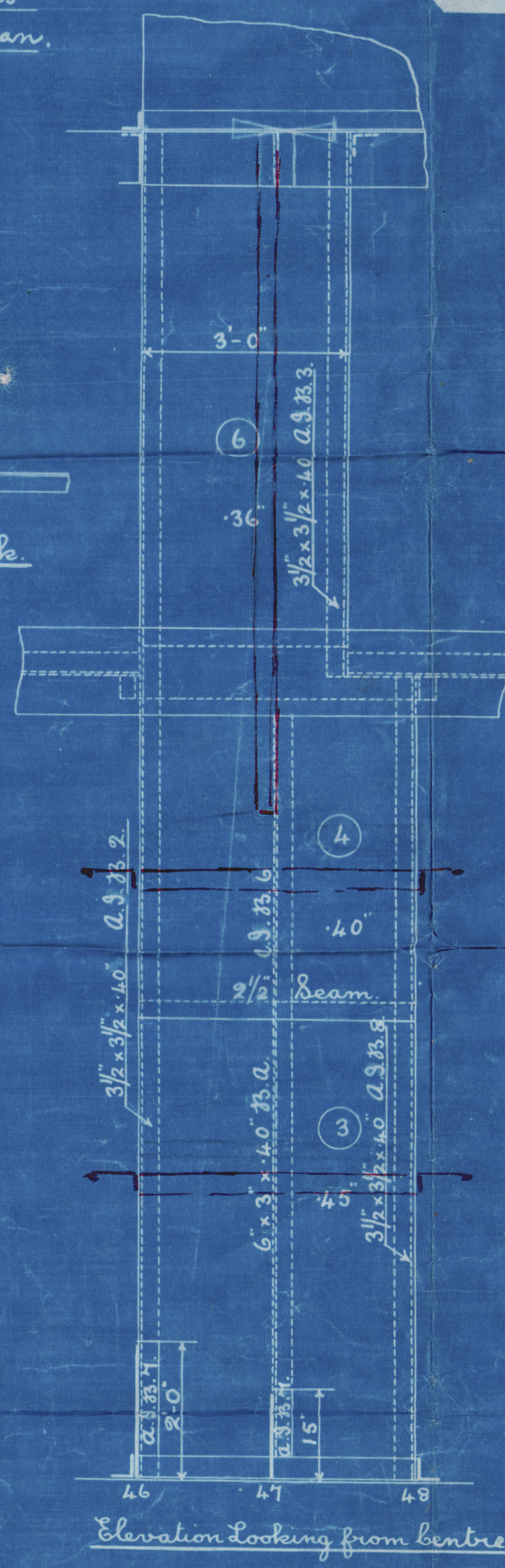
N^o 868

- N^o 868 Ship -
Plan of Ice boxes.

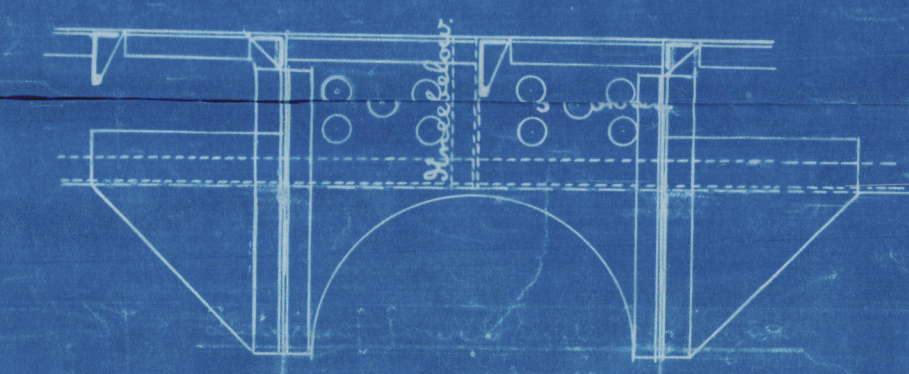
Scale 1/2" = One foot



Plan on Upper Deck



Detail of Upper Side Stringer in way of Ice Box



Detail of Lower Side Stringer in way of Ice Box

After Ice Box.

P. & S.



Section at No. 47 Frame
Looking Forward.

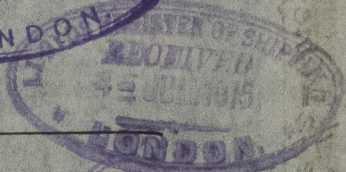
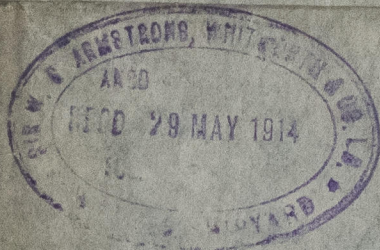
S.W. G. ARMSTRONG, WHITWORTH & CO. LIMITED
NEWCASTLE-UPON-TYNE.
No 4051. DATE 18-5-14
WALKER SHIPYARD.

Armstrong

Whitworth & Co

No 868

Plan of ice boxes.



S/C PRINCE EDWARD ISLAND

NEWCASTLE-ON-TYNE

Depth 67703



file 828376
2020

Lloyds Register
Foundation