

16 JUL 13

16.7.13
24.7.13

WALKER SHIPYARD
NEWCASTLE-UPON-TYNE

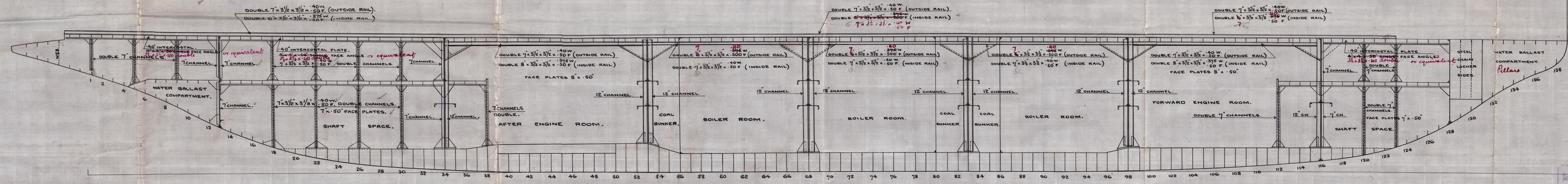
WALKER SHIPYARD
NEWCASTLE-UPON-TYNE

SIR W. G. ARMSTRONG & CO. LTD.
WALKER SHIPYARD
NEWCASTLE-UPON-TYNE

No 868 SHIP.

RAIL GIRDERS AND PILLARING.

SCALE 1/8" = 1 FOOT.



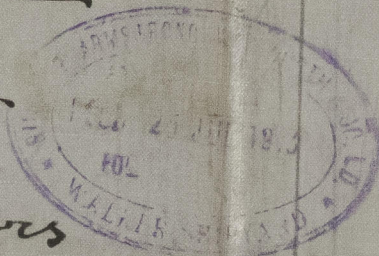
16.7.13

SIR W. G. ARMSTRONG & CO. LTD.
NEWCASTLE-UPON-TYNE
No 3458 DATE 8-7-13.
WALKER SHIPYARD.

arms strong
Whitworth & Co Ltd

No 868

Rail girders
& purling.



S.S. PRINCE EDWARD ISLAND
NEWCASTLE-ON-TYNE

Report No 67703

SAILING 19.1913



© 2020

Lloyd's Register
Foundation

006780-003786-0142