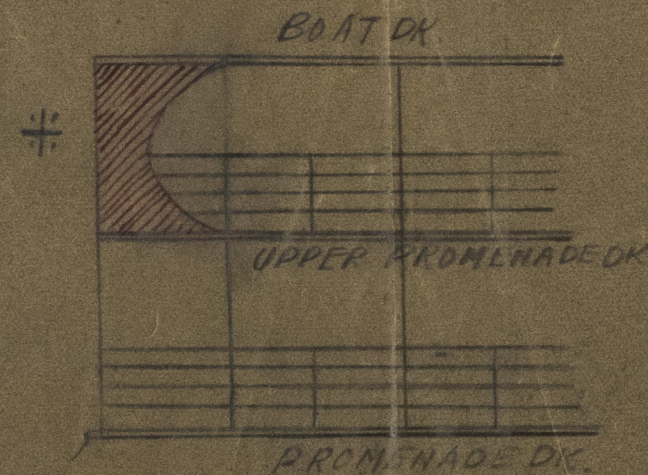


MESSRS ARMSTRONG WHITWORTH & CO'S No 868.

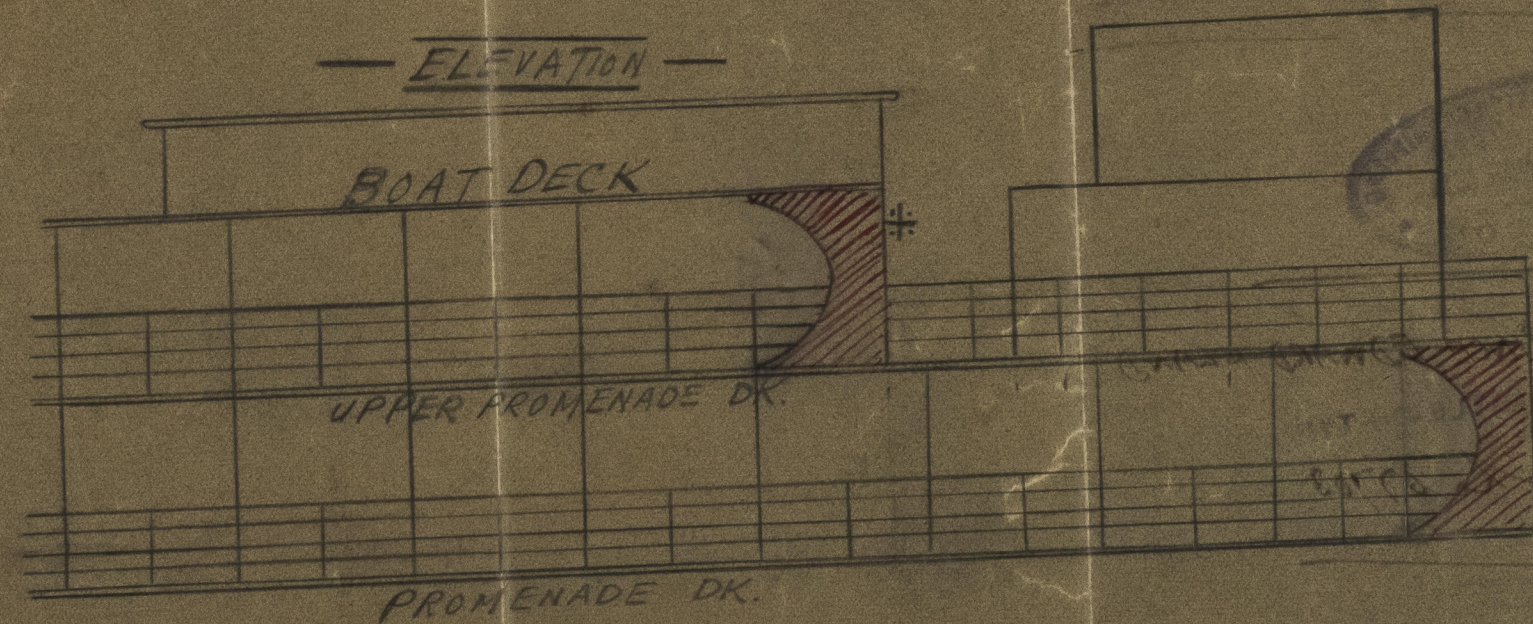
Sketch of Plating at Ship's sides at the corners and ends of the Deck sections.

23.7.14

ELEVATION

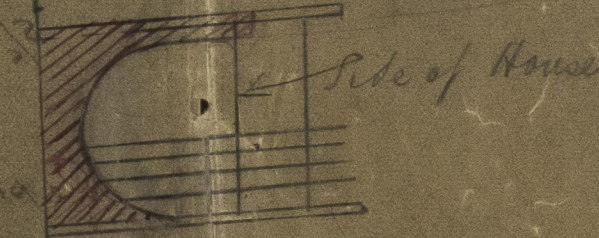


ELEVATION



SECTION

WHERE MARKED



C.B.

21.2.14



© 2020

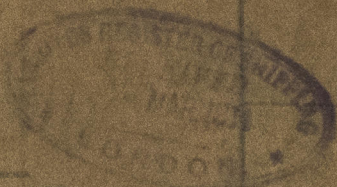
Lloyd's Register
Foundation

006780-006786-0142

Amstrong Whitworth
& Co. Ld.

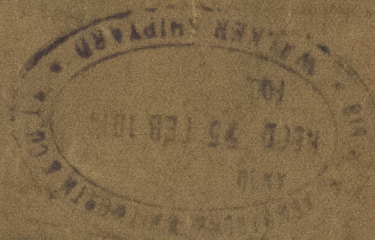
No 868

Strong turning at corners
of erections on erections



S/ PRINCE EDWARD ISLAND

Report No 67703



© 2020

Lloyd's Register
Foundation