



STERN & RUDDER FORGINGS.

No 461.

SCALE 1" = 1 FT.

TO BE TESTED TO LLOYDS' REQUIREMENTS
& TO SURVEYORS' SATISFACTION.

TOTAL AREA = 25.9 SQ FT - SPEED 10.2 KNOTS.

C OF G ABAFT CENTRE OF PINTLEG = 2.33 FT.

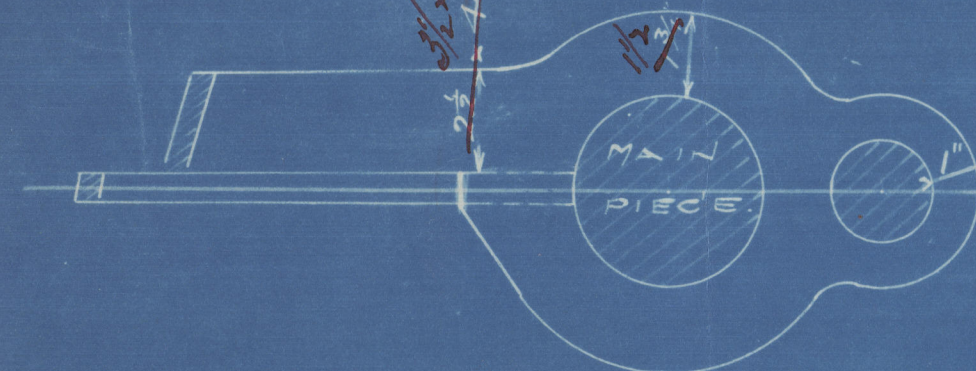
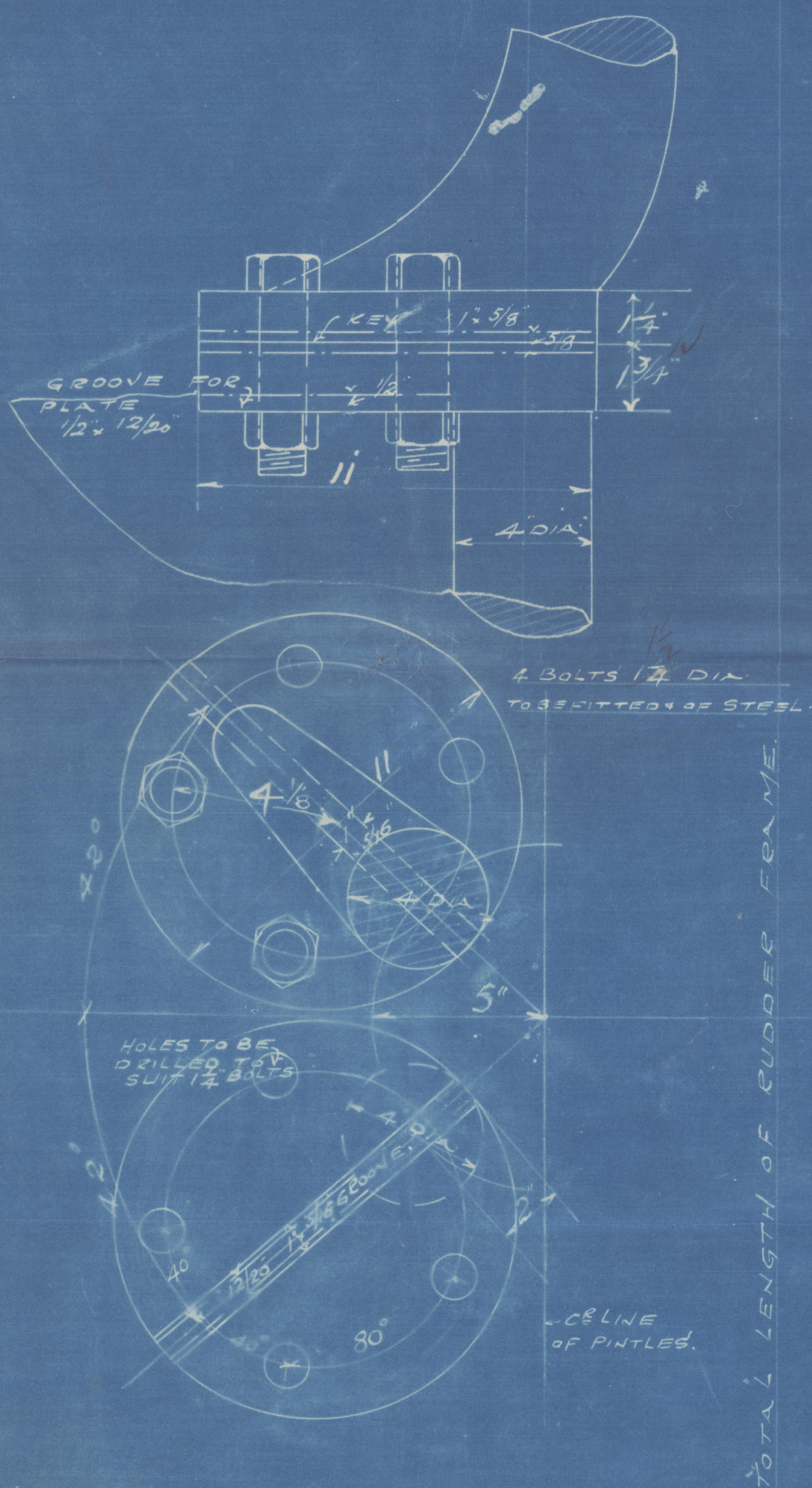
A & D = 60.35

FOR RIVER PURPOSES ONLY.

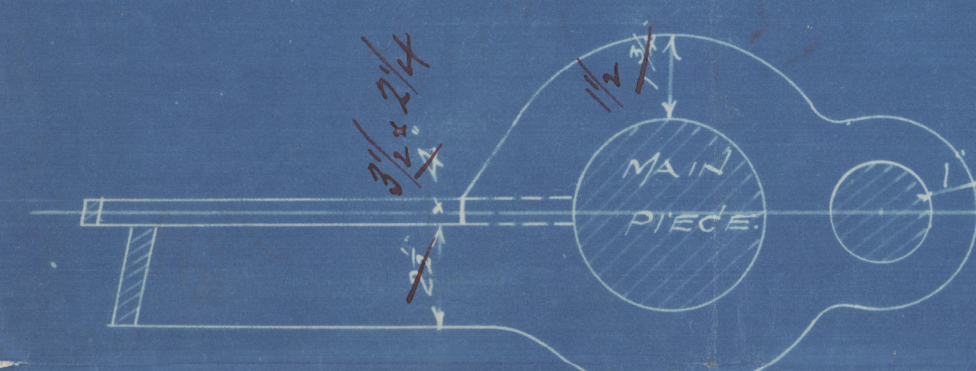
MATERIAL: FORGED IRON.

DETAIL OF COUPLING.

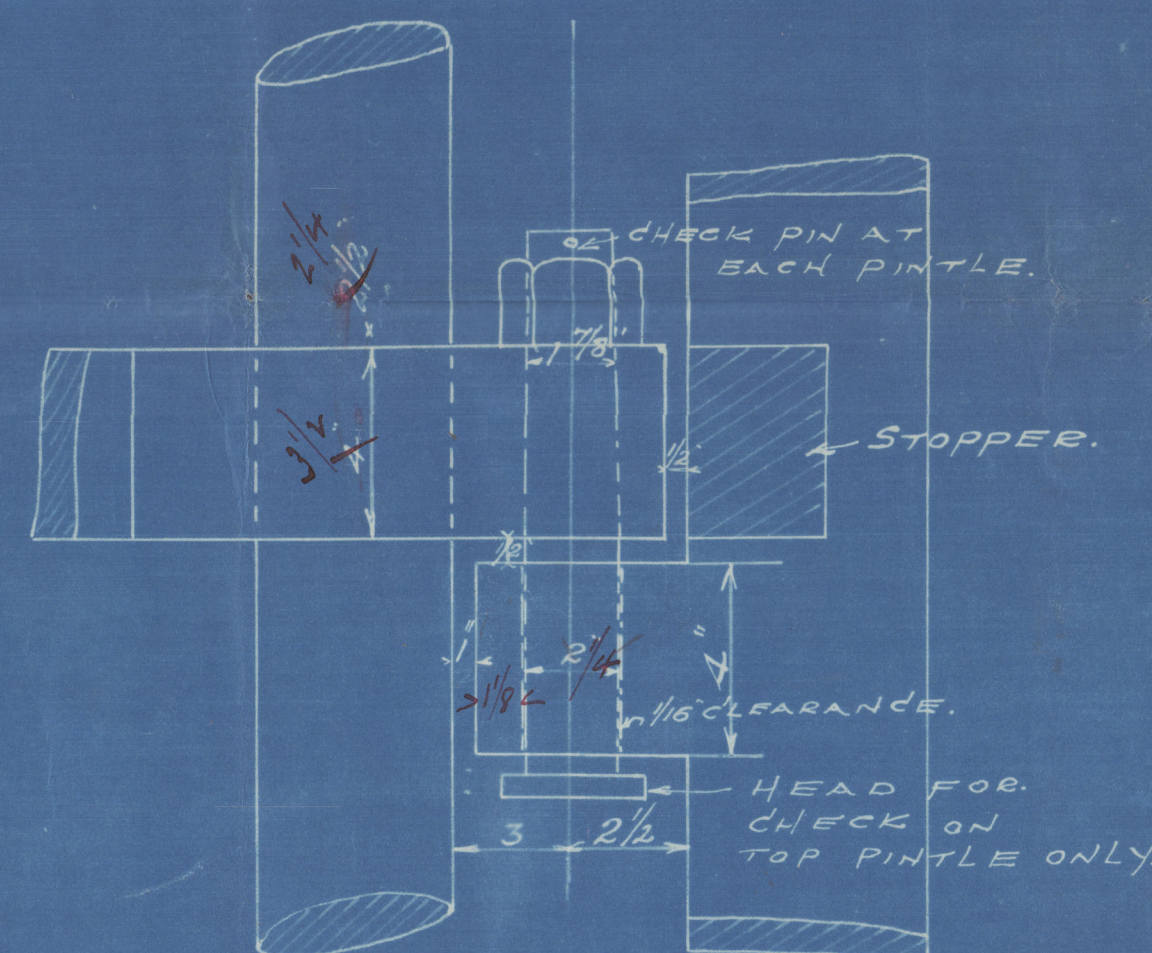
SCALE 3" = 1 FT.



TOP ARM.

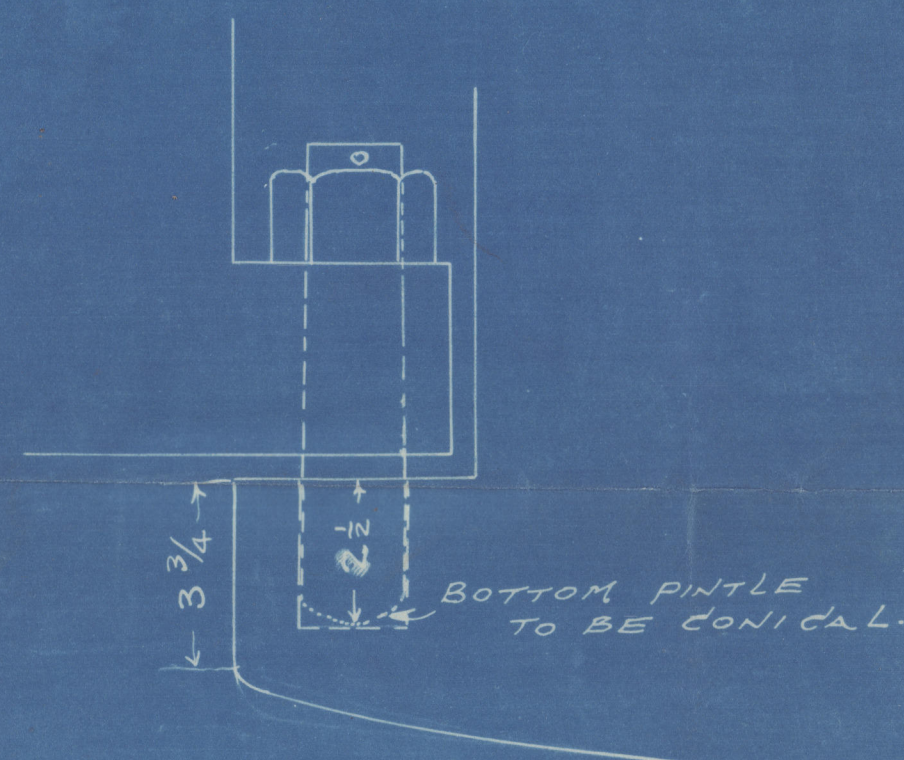


BOTTOM ARM.



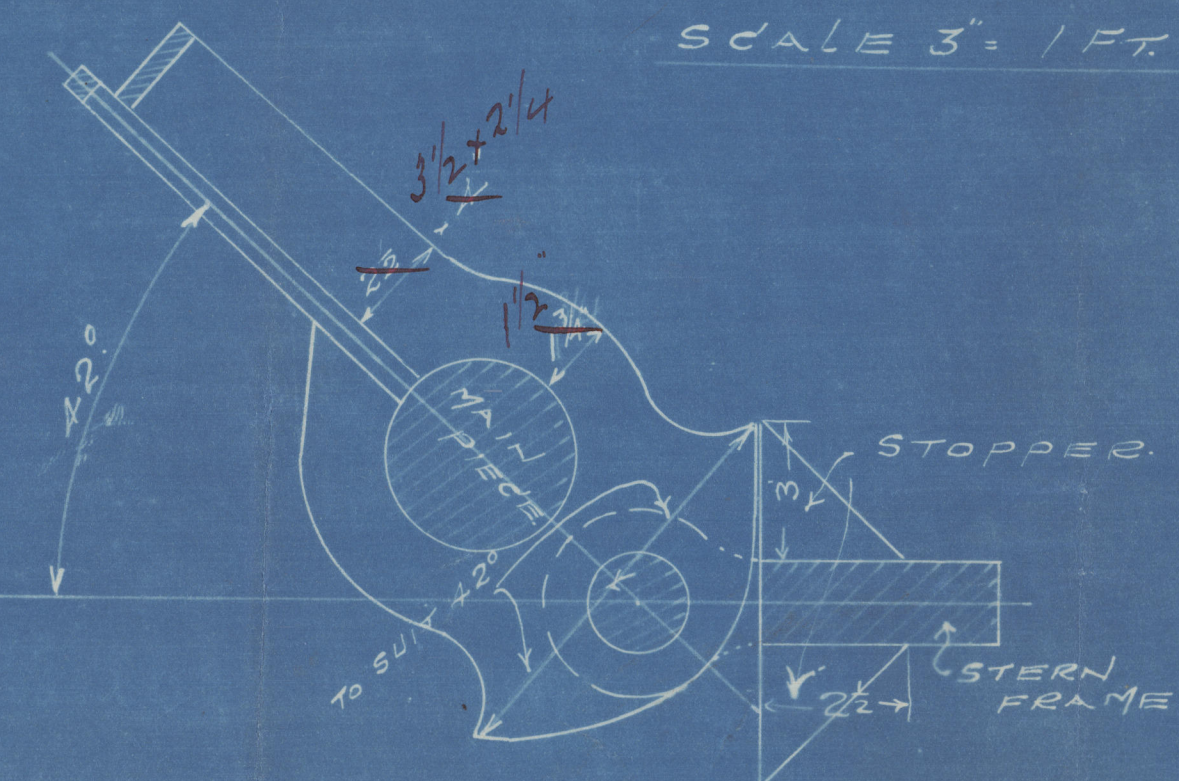
DETAIL OF PINTLES 90.

SCALE 3" = 1 FT.



DETAIL OF HEEL GUDGEON.

SCALE 3" = 1 FT.



DETAIL OF STOPPER.

SCALE 3" = 1 FT.

RIVETING:

RIVET HOLES IN RUDDER ARMS 1 1/8" DIA.
SPACED 3" APART C/B TO C/B.

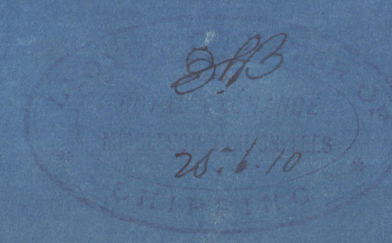
RIVET HOLES IN STERN FRAME 1 1/8" DIA.
SPACED 4 3/8" APART C/B TO C/B.

ARMS TO BE SURUNG, & KEVED
AT SIDES TO RUDDER MAIN PIECE.

Main piece of Rudder to be
swelled out in way of arms.



C.B.,
29.6.10.



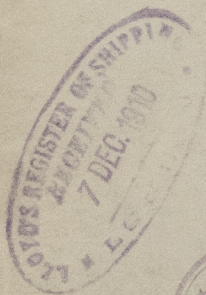
© 2020
Lloyd's Register
Foundation

Smith Dock Co.

No 461.

Forged iron stem &
rudder frame

"Barão de Lameta"
Hull Report 691



006723-006730-0281



© 2020

006723-006730-0281

Lloyd's Register
Foundation