

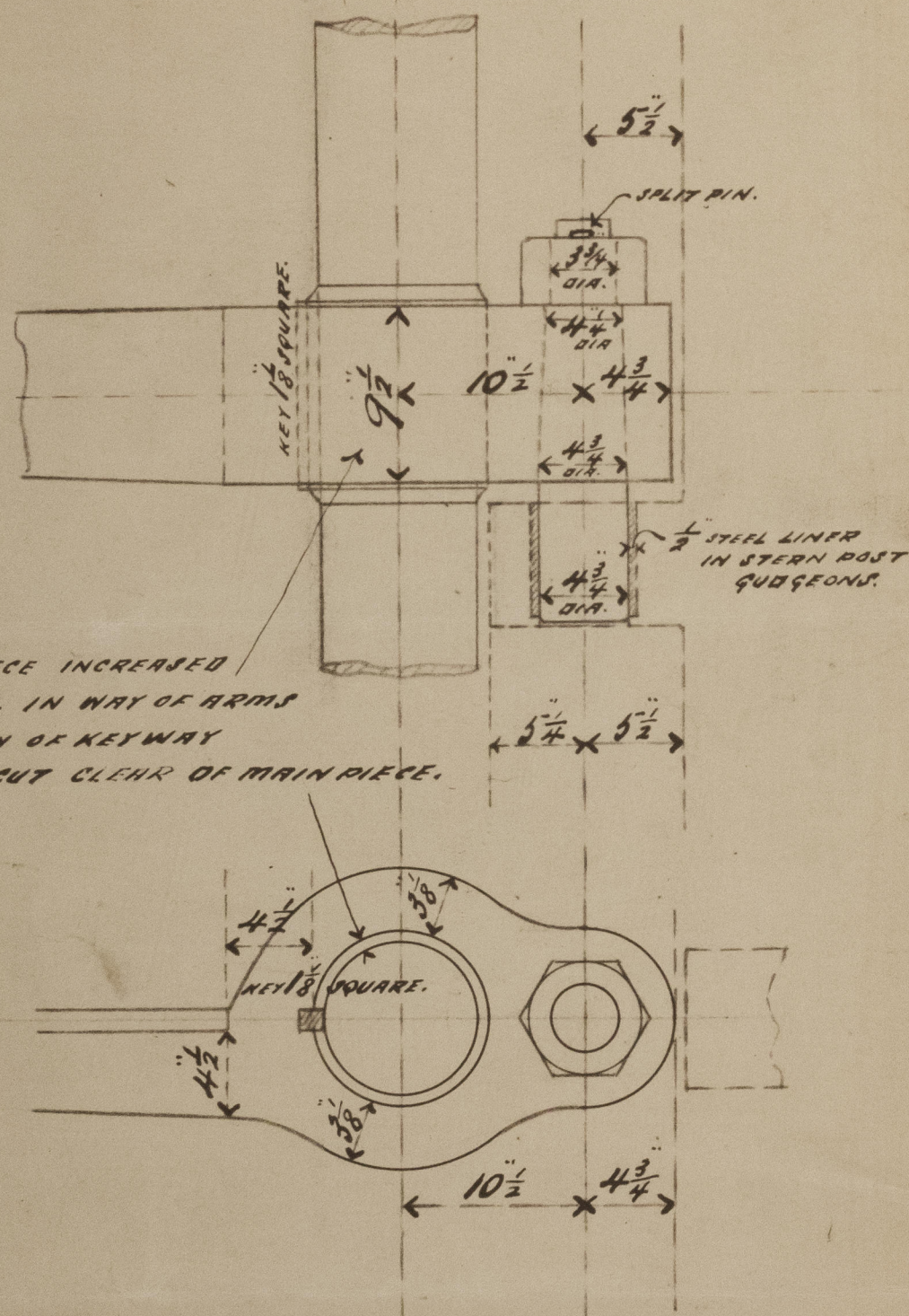
S. S. 478.

SCALE  $\frac{1}{2}'' = 1$  FOOT.

AREA 140.38  
x C. G. 3.16  
443.60 = A. x D.

SPEED = 10 KNOTS.

DETAIL OF GUDGEONS  
& PINTLES, SCALE  $\frac{1}{2}$ " = 1 FOOT.



MAIN PIECE INCREASED  
1 IN DIA. IN WAY OF ARMS  
TO ALLOW OF KEYWAY  
BEING CUT CLEAR OF MAIN PIECE.

COUPLING  $23\frac{1}{2}$ " DIA.  $\times$   $2\frac{5}{8}$ "  
WITH 6 BOLTS  $2\frac{5}{8}$ " DIA.

SINGLE PLATE  
1.02 THICK.

1 1/4" RIVETS IN ARMS  
5 5/8" APART C. TO C.

A circular purple ink stamp. The outer ring contains the text "LLOYD'S REGISTER OF" at the top and "SHIPPING" at the bottom, separated by two small stars. In the center, the text "J.S.S." is written in a stylized red font, followed by "SUNDERLAND" in a plain black font, and the date "17-3-10" in a red script font.



RUDDER 478 1/2.

J. L. Thompson  
of Son. J.

Terrier

Sld 24719

M "RYUNAN MARU"



© 2020

Lloyd's Register  
Foundation

006723-006730-0132