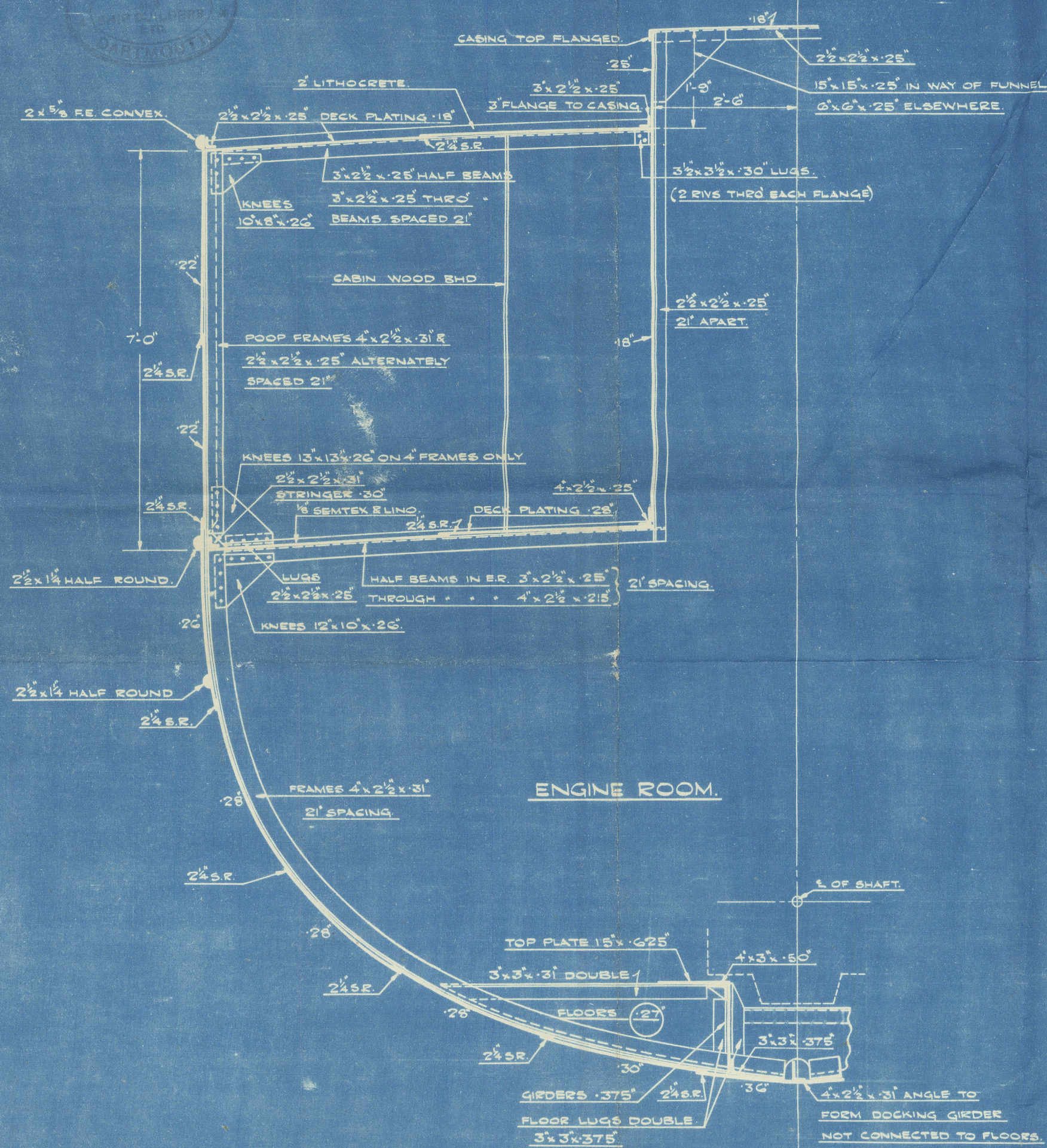


DRAWING N^o 1129/7

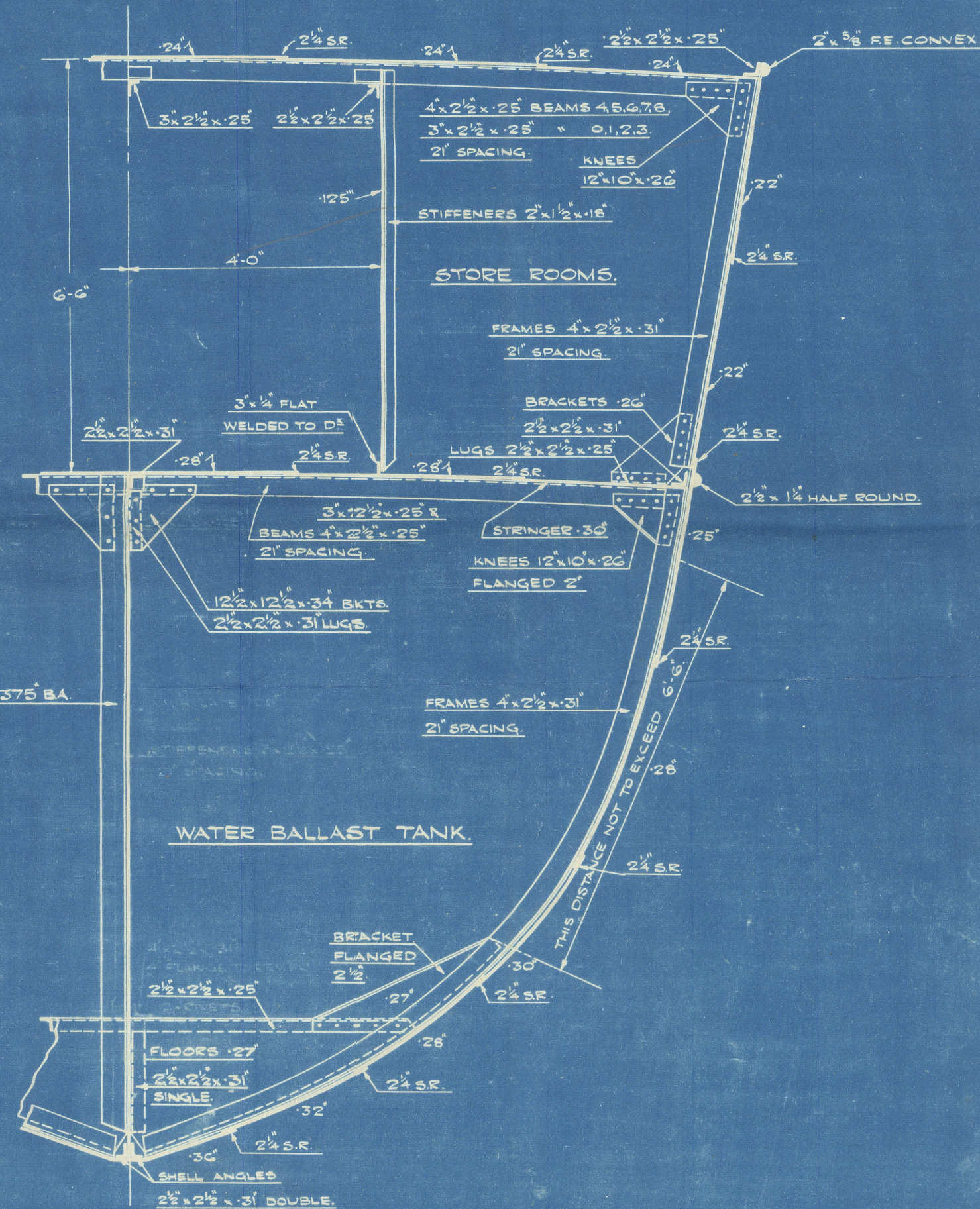
NAVAL ARMAMENT VESSEL.

TRANSVERSE SECTIONS.

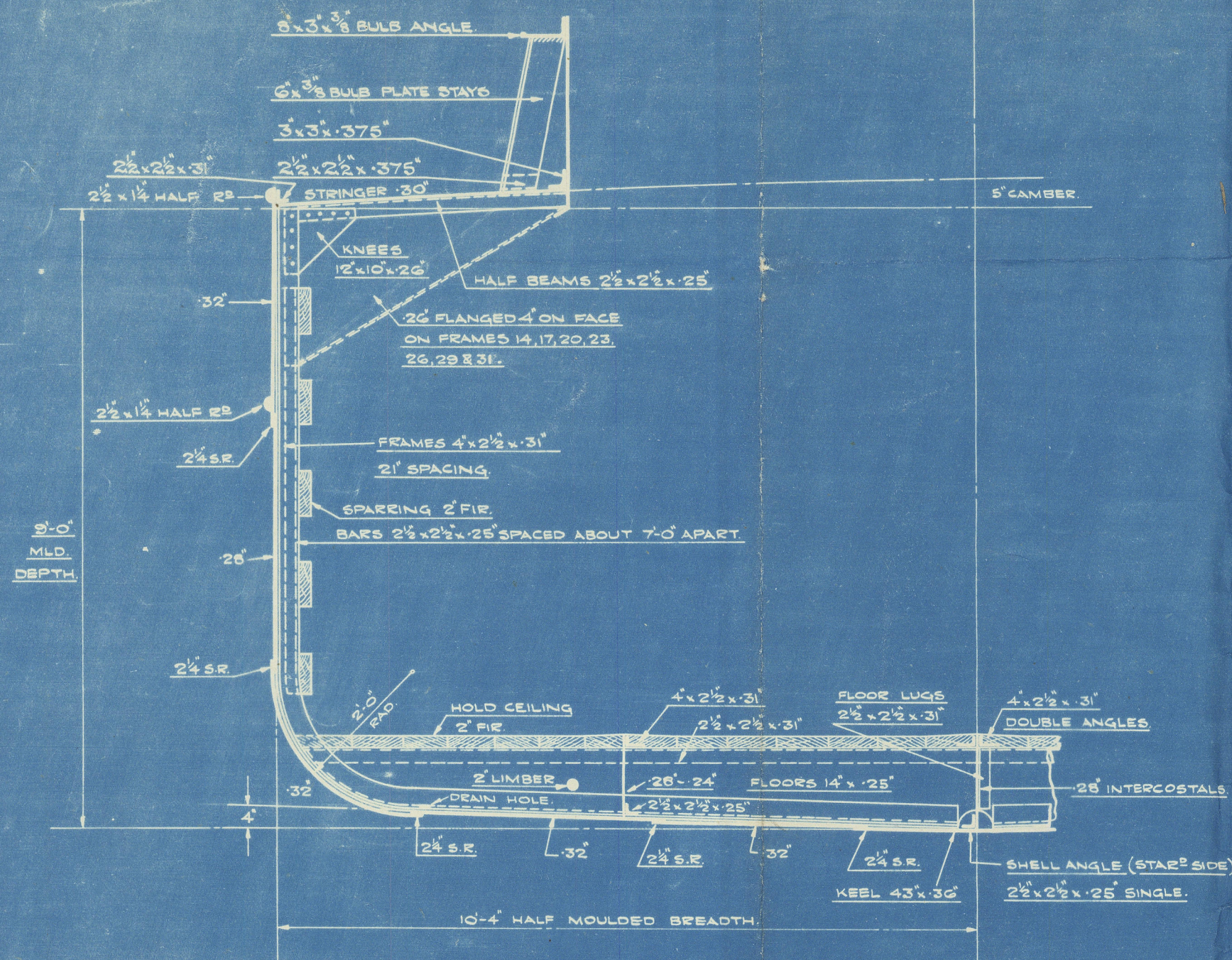
SCALE: $\frac{1}{2}$ = 1 FOOT.



HALF SECTION THRO' ENGINE ROOM
LOOKING AFT.



HALF SECTION THRO' FORE PEAK.
LOOKING FORWARD.



MIDSHIP SECTION.

CLASS 100 A.I. "FOR COASTAL SERVICE HOME TRADE"
EQUIPMENT.

- 2 BOWER ANCHORS EACH 5 1/4 CWTs - STOCKLESS
- 1 STREAM ANCHOR 1 1/4 CWTs. EX-STOCK
- 120 FATHOMS 1 1/2" STUD LINK CHAIN CABLE.
- 90 FATHOMS 4 1/2" MANILLA HAWSER
- 90 FATHOMS 3" MANILLA HAWSER.
- 90 FATHOMS 2 1/2" GFSWR.

YARD N^o 1129/1130.

MIDSHIP SECTION

MATCH LOCK * DRT Rpt 7749

FLINT LOCK " 7750.



© 2021

Lloyd's Register
Foundation

006666-006679-0185