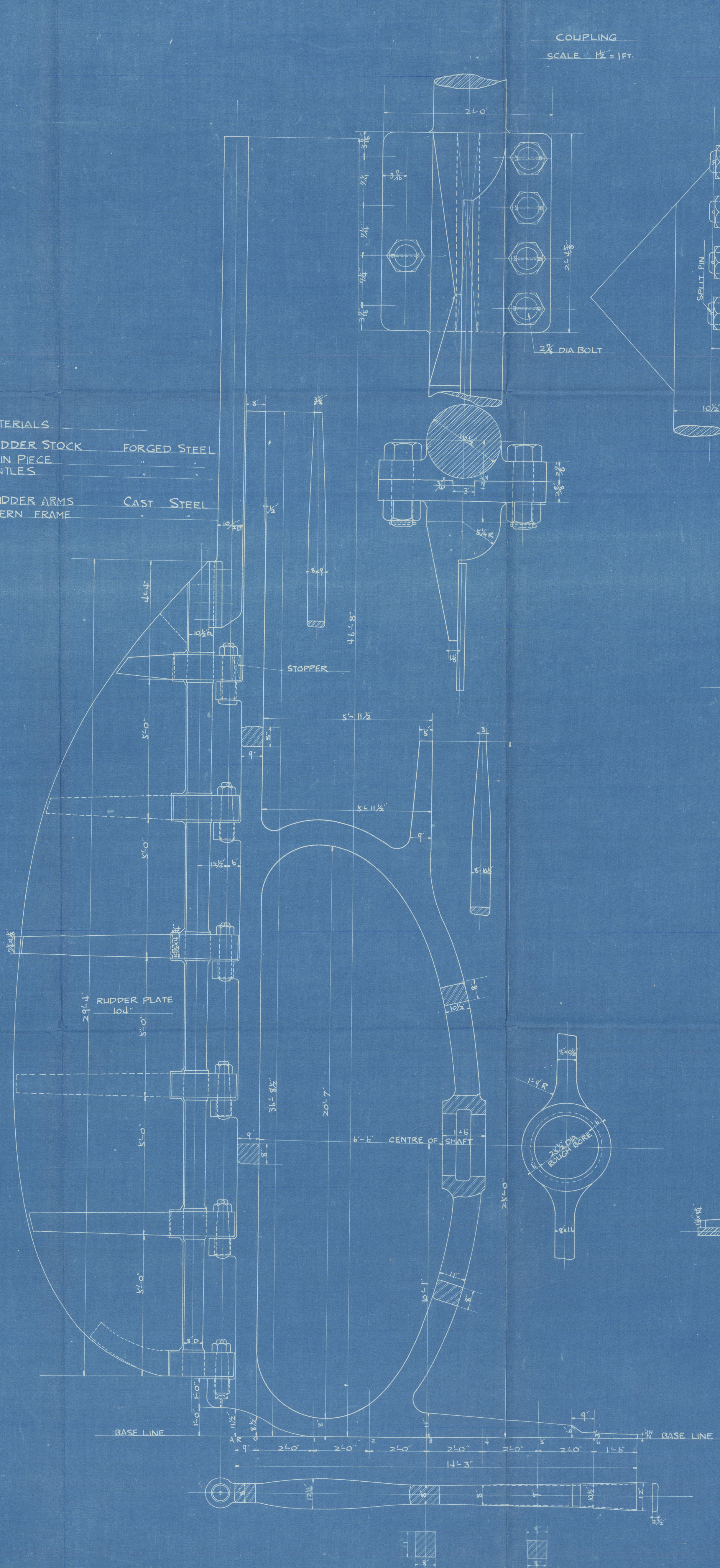


S. S. "YIPRES MARU".

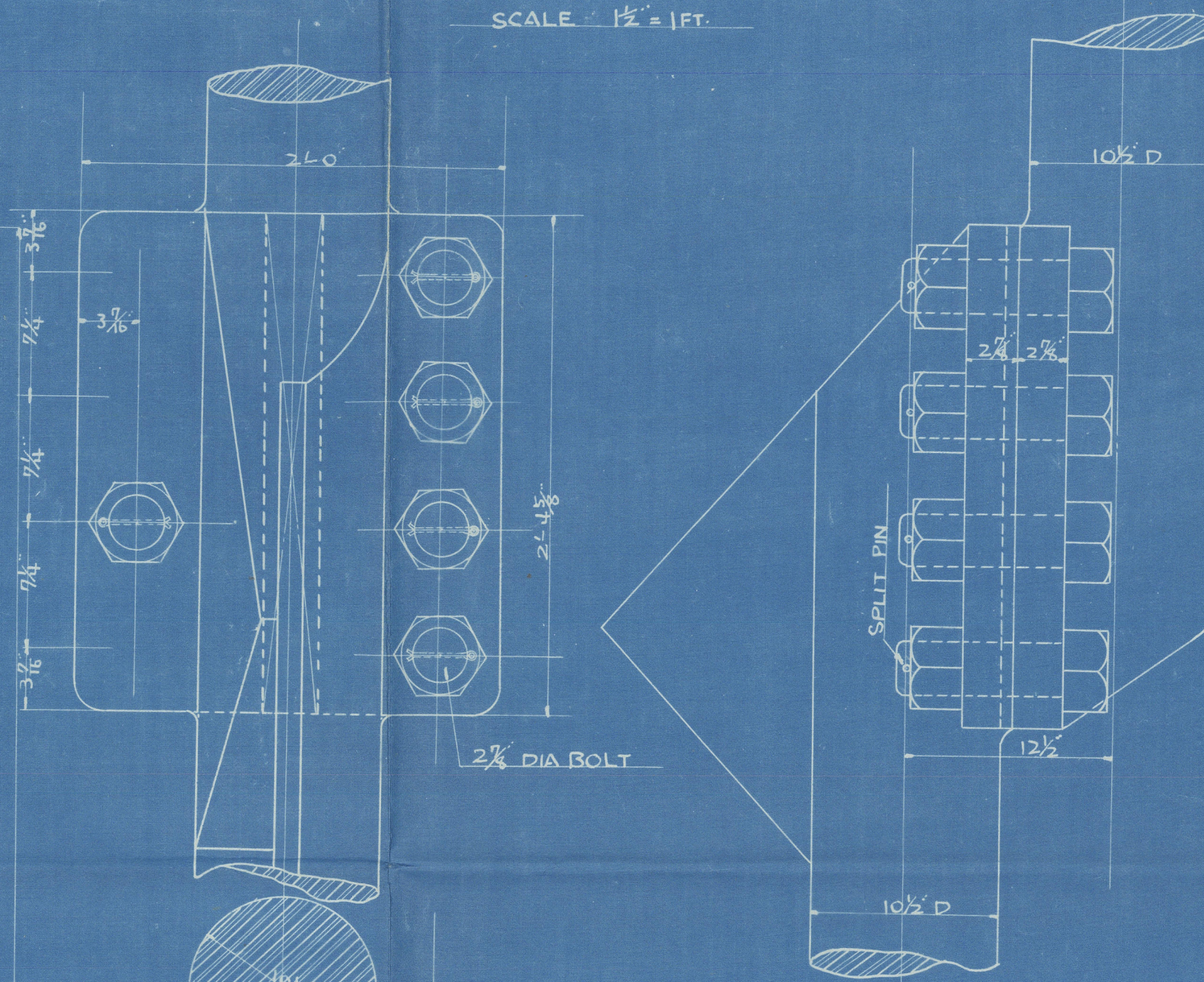
STERN FRAME & RUDDER.

SCALE $\frac{1}{2}$ " TO ONE FOOT.

MATERIALS
 RUDDER STOCK FORGED STEEL
 MAIN PIECE
 PINTLES
 RUDDER ARMS CAST STEEL
 STERN FRAME

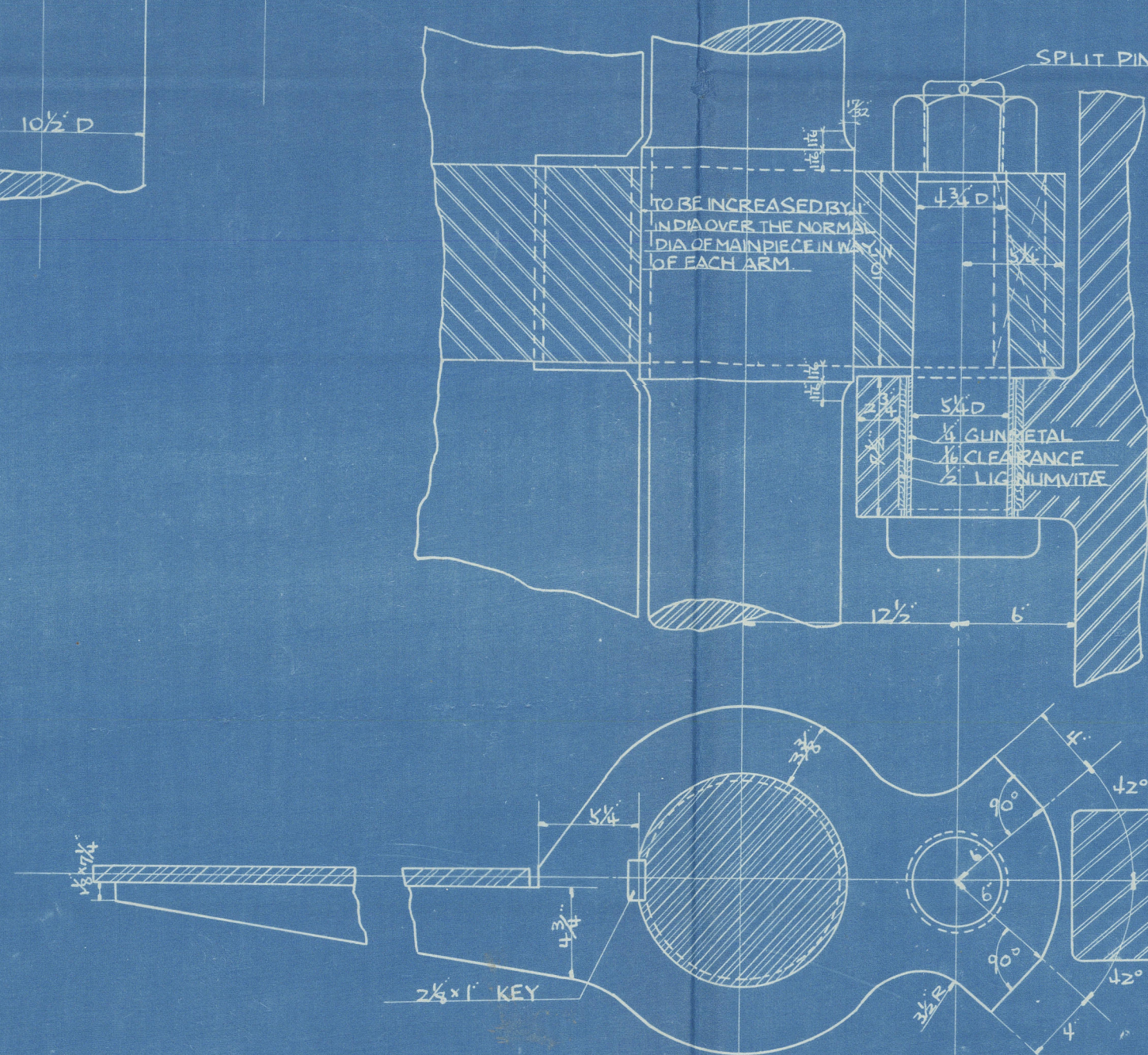


COUPLING
 SCALE $\frac{1}{2}$ " = 1 FT.

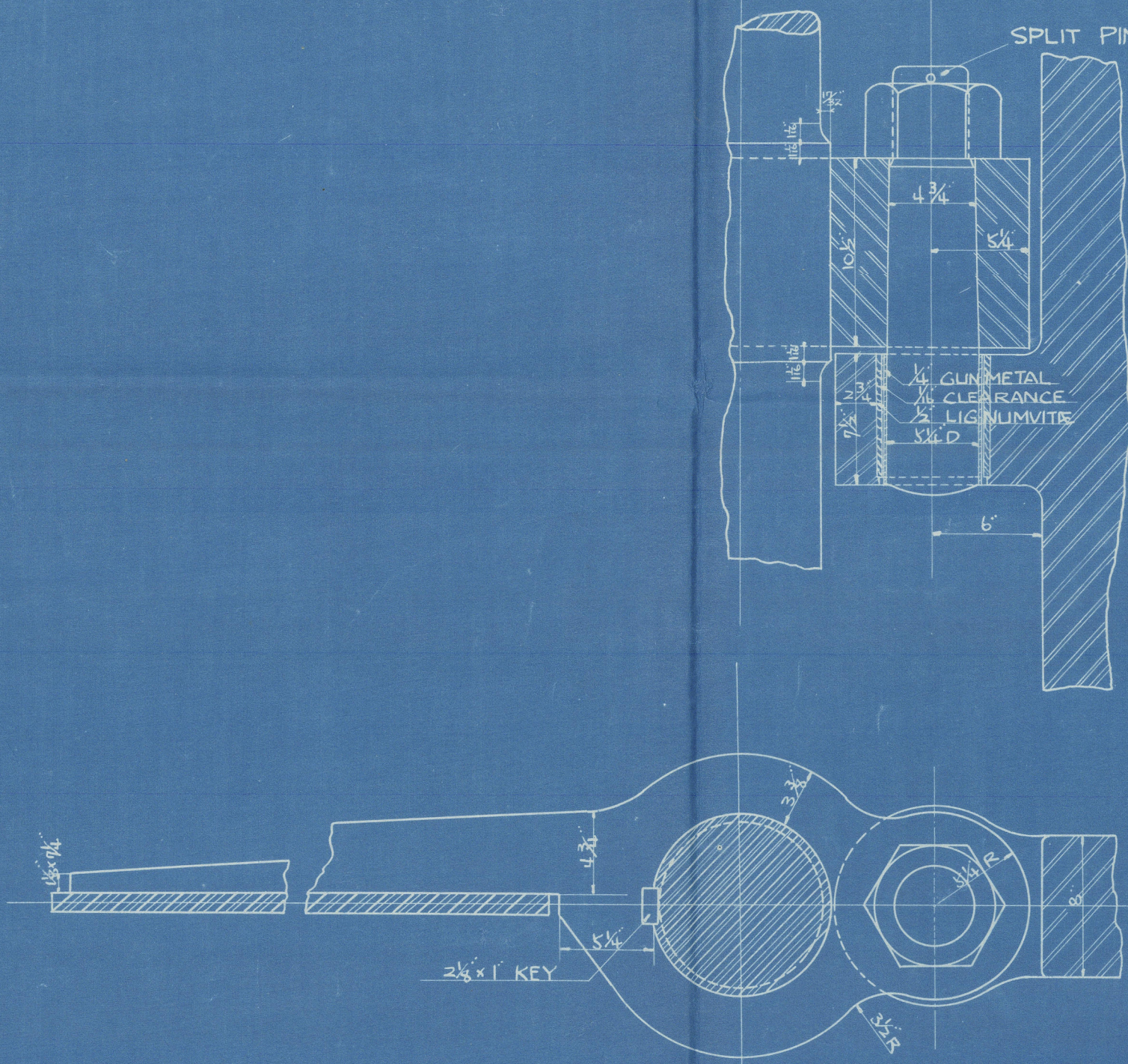


RUDDER AREA = 156.49 SQ. FT.
 C.G. OF RUDDER ABAFT C. OF PINTLE = 3.6 FT.
 $A \times D = 156.49 \times 3.6 = 563.364$
 SPEED NOT EXCEEDING 12 KNOTS.

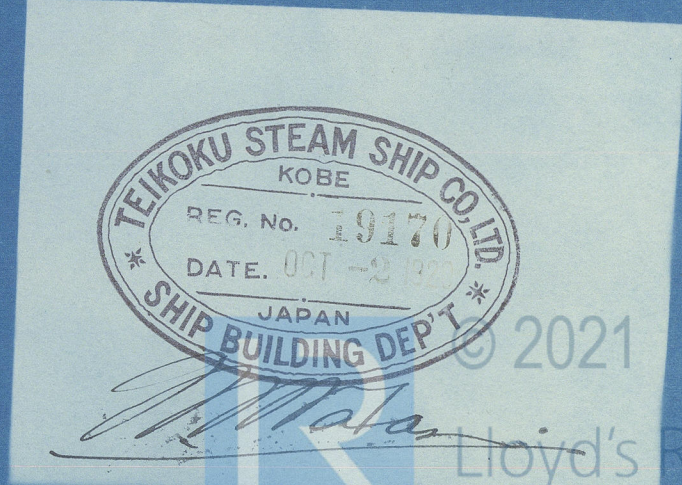
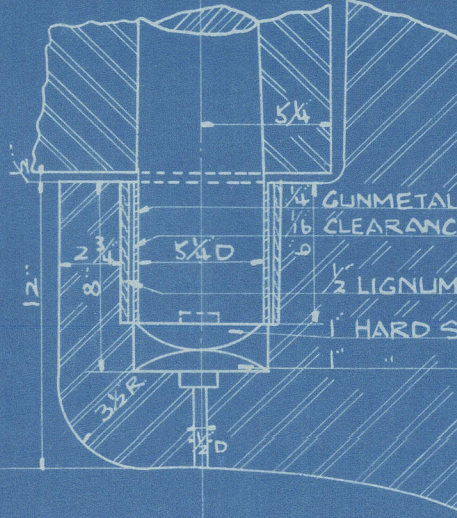
LOCKING PINTLE & STOPPER ARM
 SCALE $\frac{1}{2}$ " = 1 FT.



PINTLE & ARM



HEEL GLIDGEON



2021

Lloyd's Register Foundation

T. S.S. Form No. 36.

"KYOKKOH. MARU."

HARIMA YARD No. 45

Ship's Name: "YPRES MARU"

Kot. 2994.

STEM. STERNFRAME & RUDDER.

No. _____

TEIKOKU STEAMSHIP CO., LTD., KOBE, JAPAN.



© 2021

Lloyd's Register
Foundation

006666-006679-0134