

## Lloyd's Register of Shipping.

Index No. 37407  
(For London Office only).

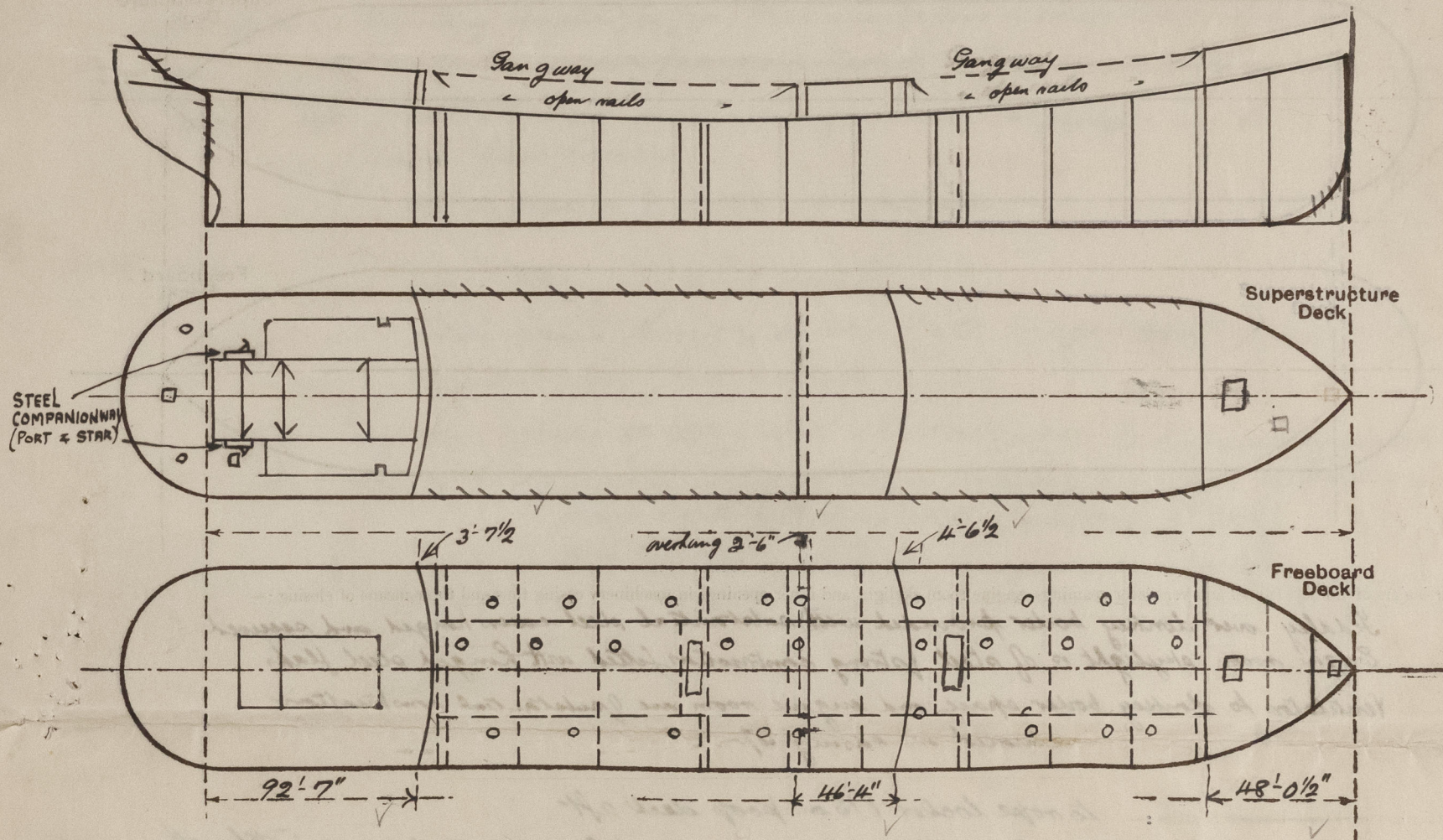
## SURVEYS FOR FREEBOARD.

F49

(CONDITIONS OF ASSIGNMENT.)

Ship's Name *Empire Traveller*Port of Survey *Belfast + Glasgow*Official Number *168530*Surveyor's Signature *Wm. Belfast and H. J. Lyle*Nationality and Port of Registry *British. Belfast*Date of Survey *during construction.*

Disposition and dimensions of superstructures, trunks, deckhouses and machinery casings to be inserted in the diagrams and tabular statement:—



Particulars of Superstructures, Trunks, Casings, Deckhouses.

	Coaming	Plating	Stiffeners	Spacing	End Attachments of Stiffeners	Size of Openings	Height of Sills	Height of Casings
Poop Bulkhead ...	.44	.44	10 x 3 1/2 x 7/16 BA	26-30	welded top/bottom	2' 0" 5' 0" 3' 6"	18"	7' 6"
Raised Quarter Deck Bulkhead ...								
Bridge, After Bulkhead ...	.30	.30	6 x 3 BA AND 4 x 2 1/2 x 7/16 BA	26-30	none	2' 0" 5' 3" 13' 0" 1' 0" 5' 0" 13' 0"	18"	7' 6"
Bridge, Forward Bulkhead ...	.44	.44	9 x 3 1/2 x 7/16 BA	26-30	welded top/bottom	1' 0" 5' 0" 13' 6"	18"	7' 6"
Forecastle Bulkhead ...	.30	.30	4 x 2 1/2 x 7/16 BA	26-30	none	1' 0" 5' 0" 13' 0" 2' 0" 5' 0" 13' 6" 1' 0" 5' 0" 13' 0"	13 18"	7' 6"
Trunk, Aft ...								
Trunk, Forward ...								
Exposed Machinery Casings on Freeboard or Raised Quarter Decks ...								
Exposed Machinery Casings on Superstructure Decks ...	.30	.26	4 x 3 x 3/32	31"	none	where exposed none		7' 6"
Machinery Casings within Superstructures not fitted with Class I Closing Appliances ...								
Deckhouses on Flush Deck Ships ...								

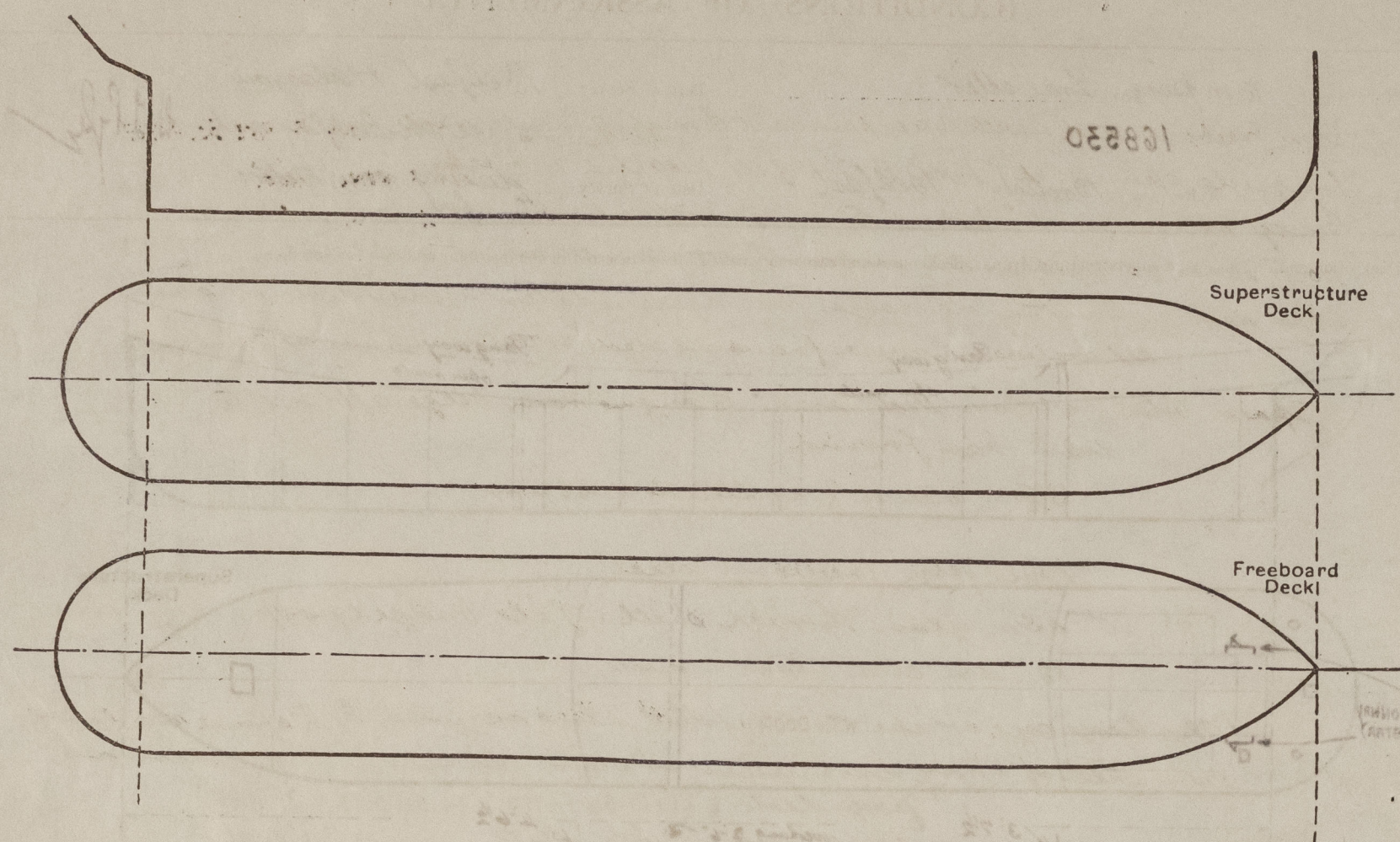
Particulars of Closing Appliances (state if capable of being manipulated from both sides).

Poep Bulkhead ...	2 Hinged steel W.T. doors
Raised Quarter Deck Bulkhead ...	
Bridge, After Bulkhead ...	one hinged steel W.T. door; two openings with portable steel stiffened plates secured by hook bolts
Bridge, Forward Bulkhead ...	1 Hinged steel W.T. door
Forecastle Bulkhead ...	one hinged steel W.T. door; one hinged steel door; one opening with portable steel stiffened plate secured by hook bolts
Exposed Machinery Casings on Freeboard or Raised Quarter Decks ...	
Exposed Machinery Casings on Superstructure Decks ...	no openings
Machinery Casings within Superstructures not fitted with Class I Closing Appliances ...	
Deckhouses on Flush Deck Ships ...	(All hinged doors capable of being manipulated from both sides)



# PARTICULARS OF PROTECTION TO OPENINGS, ETC.

The following diagrams should be used to indicate the positions of cargo and coaling hatchways, gangway, cargo and coaling ports, ventilators, companionways, etc., which would affect the seaworthiness of the ship:—



Particulars of fiddle, funnel and ventilator coamings, engine room skylight and other openings in machinery casing tops and their means of closing:—

Fiddle and donkey boiler provided with substantial steel covers hinged and secured.  
Engine room skylight of steel strong construction fitted with hinged steel flaps.  
Ventilator to donkey boiler space and engine room are of substantial construction situated in casing top.

Particulars of Flush Bulkhead Scuttles:— to rope locker P15 on poop deck aft

The openings have a 7" B.A. coaming with flanged steel cover fitted with hemp packing secured by spindle, strong back and butterfly nut.

Particulars of Companionways:— One door in fore bulkhead to pump room 60" x 24" sill 18" hinged steel

W.T. door secured by toggles. Access to pump rooms (cargo) in strong steel deckhouse, one each well, house 7'6" high. 32 plating stiffeners 6 x 3 x 30 B.A. in front; 4 x 2 1/2 x 516 B.A. in side & aft end spaced 27" to 30". Door 58" x 30" x 18" hinged steel W.T. door secured by toggles. STEEL COMPANIONWAY (P45) on poop aft end door leading to stairway to deck below. hinged solid wood door 24" x 64" sill 18".

Particulars of Ventilators in exposed positions on freeboard and superstructure decks:—

On fore castle deck: 7 at 10" dia; 10 at 8" dia; 20 at 6" dia coam 36" x 1/2 inch thickness to spaces in fore castle and below freeboard deck, 1-5 DIAM. S.N. VENT TO STORE 29" HIGH.

On bridge deck: 7 at 6" dia coam 30" x 32 to spaces in bridge

On poop deck: 20 at 10" dia; 6 at 6" dia coam 30" x 1/2 inch thickness to tween deck steering gear 15" S.N.V. 8" x 2" cast steel 36" to upper & lower tween decks

Low well: 2 at 2" dia derrick posts to vents to pump room apparently supported

Aft well: 2 at 2" dia

Boat deck: 6 at 8", 10", 12" dia coam 30" x 1/2 inch thickness to poop tween decks

Low ventilators on fore and poop provided with W.T. steel covers or wood plugs or canvas covers

Particulars of Air Pipes in exposed positions on freeboard, raised quarter, or superstructure decks:—

On fore castle deck: 10 at 4" to fore peak; 4 at 4" to deep tanks 30" high

On freeboard deck: 10 at 3" to fore peak; 4 at 3" to deep tanks 30" high

On poop deck: 2 at 3" to aft peak; 4 at 3" to deep tanks 30" high

On bridge deck: 2 at 3" to aft peak; 4 at 3" to deep tanks 30" high

On Coaling top: 2 at 3" to aft peak; 4 at 3" to deep tanks 30" high

Air pipes on fore castle, freeboard deck & poop deck provided with wire gauge or canvas covers or wood plugs

Particulars of Gangway Cargo and Coaling Ports:—

None

Particulars of Scuppers and Sanitary Discharge Pipes:—

From freeboard deck wells: 6 scuppers cut through gunwale angle AND 3 PIPE SCUPPERS (P.S.)

Forecastle spaces: 1" hole P15 in fore bulkhead with brass screw plug.

Bridge spaces: 1" hole P15 in aft bulkhead with brass screw plug.

Poop spaces: 1" hole P15 in aft bulkhead with brass screw plug.

Upper deck: 1. Sanitary discharges from accommodation on bridge deck as above led ashore above freeboard deck with storm valves at ship's side

Spaces below freeboard deck drain to engine room bilges aft and to drain hatch forward

Storm valves of malleable cast iron

Particulars of Side Scuttles:—

None below freeboard deck

8", 10" clear glass through shell of fore bridge & poop & pump rooms.

12' dia clear glass in hull houses

Also large eye escape W.T. DOOR fitted above required by Defence regulations one in shell of strong construction at stern between freeboard deck and poop deck (21' x 21" sq FITTED WITH HANDLES, 21" HIGH.)

Side SCUTTLES fitted with hinged deadlights.

Vertical distance of Sill of lowest Side Scuttle above top of keel

None below freeboard deck

Particulars of Guard Rails:—

On poop, bridge & fore castle and between bulwarks well 3'6" high, 3 rails stanchions 4'6" to 5 ft apart

Particulars of Gangways, Lifelines, etc.:— Fore and aft gangway wells 7'6" high; channel stringer 6 x 3 x 3/8 P15 connected by 3 x 3 x 3/8 transverse angles spaced 4'0" apart. Gangway plated 32 with transverse strips welded to plating with nails, 2 each side. Gangway supported by bracing to deck 4' x 4' x 1/2 angles spaced 8'0" apart and spaced 5'3" transverse at deck. Supports braced from vessel by 3 x 3 x 7/16 angle diagonals and longitudinally by ties 3 1/2 x 3 1/2 x 3/8 angles fitted diagonally in alternate spaces

## Particulars of Freeing Arrangements.

	Length of Bulwark	Height of Bulwark	Size of Freeing Ports	Number each side	Area each side	Rule area each side
After Well 130' - 4"	at poop 15 ft	3' 8"	3' 0" x 1' 3"	1	over 50 sq ft	✓
Forward Well 120' - 8"	at bridge 16 ft	3' 8"	3' 0" x 1' 3"	1	over 50 sq ft	✓

State position of each freeing port ... (After Well:—

(F. and A. position and height above deck edge) (Forward Well:—

State whether the freeing ports are fitted with shutters, bars, or rails, and give particulars of such:—

Additional area where sheer is less than standard.



# PARTICULARS OF PROTECTION TO OPENINGS, ETC.

HATCHWAYS ON FREEBOARD AND SUPERSTRUCTURE DECKS.									
Description of Hatchway		Fore end of deck Fore peak		Forehold		Freeboard deck Cargo tanks		Forehold	
Dimensions of Hatchway		30' x 30'		8' x 8'		27' x 4' 0" inc 8' 0" x 18"		39' x 39'	
COAMINGS	Height above Deck	9" B.A.		30"		10"		6' ch	
	Thickness	46		50		3/4"		46	
	Stiffeners	4		5		4		5	
	Brackets, Stays	4		4		4		4	
HATCH BEAMS	Number	4		4		4		4	
	Spacing	4		4		4		4	
FORE AND AFTERS	Number	4		4		4		4	
	Spacing	4		4		4		4	
HATCH COVERS	Material	Steel		Steel		Steel		Steel	
	Thickness	50		50		50		50	
HATCH COVERS	How fitted	hinged		hinged		hinged		hinged	
	Bearing Surface	W.T.		W.T.		W.T.		W.T.	
Spacing of Cleats		toggles		toggles		toggles		toggles	
Number of Tarpaulins		18 apart		18 apart		20 apart		20 apart	

\*Are wood fore and afters steel shod at all bearing surfaces?  
 Are battens and wedges efficient and in good condition?  
 Are tarpaulins in good condition and in accordance with rule requirements?  
 Are lashings provided in accordance with rule requirements?

Particulars of any special features:—

Endorsement at first survey and at surveys for renewal of Certificate:—

The fittings and appliances are in accordance with the particulars shown on this form (or as now modified) and are in good condition.



© 2021

Lloyd's Register  
Foundation