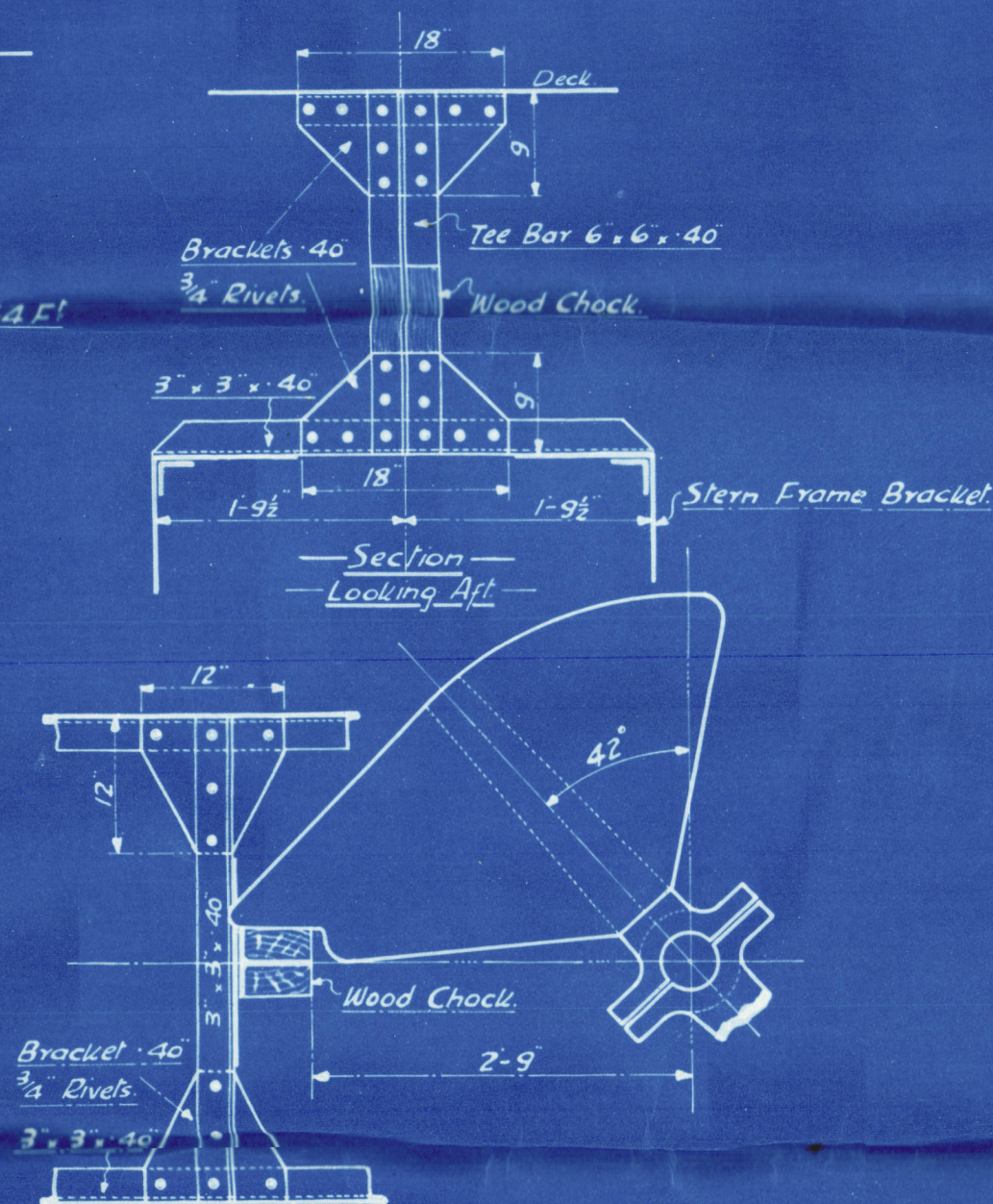
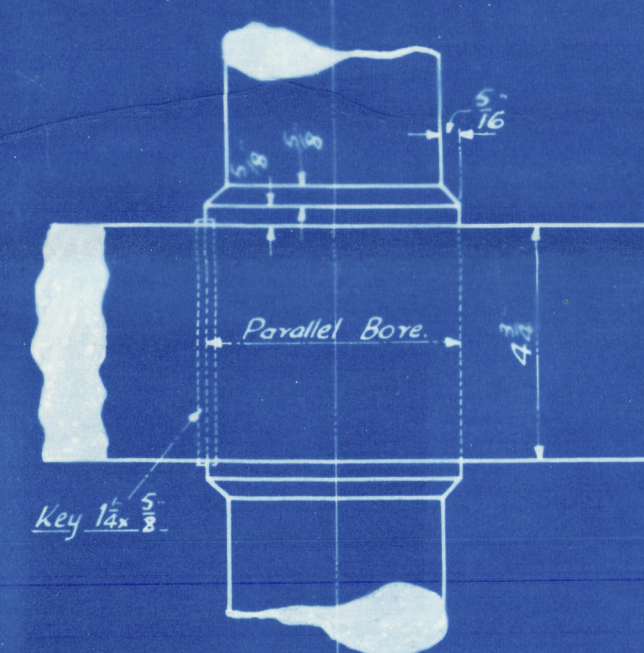


SCALE $\frac{3}{4}"=1\text{ FT}$

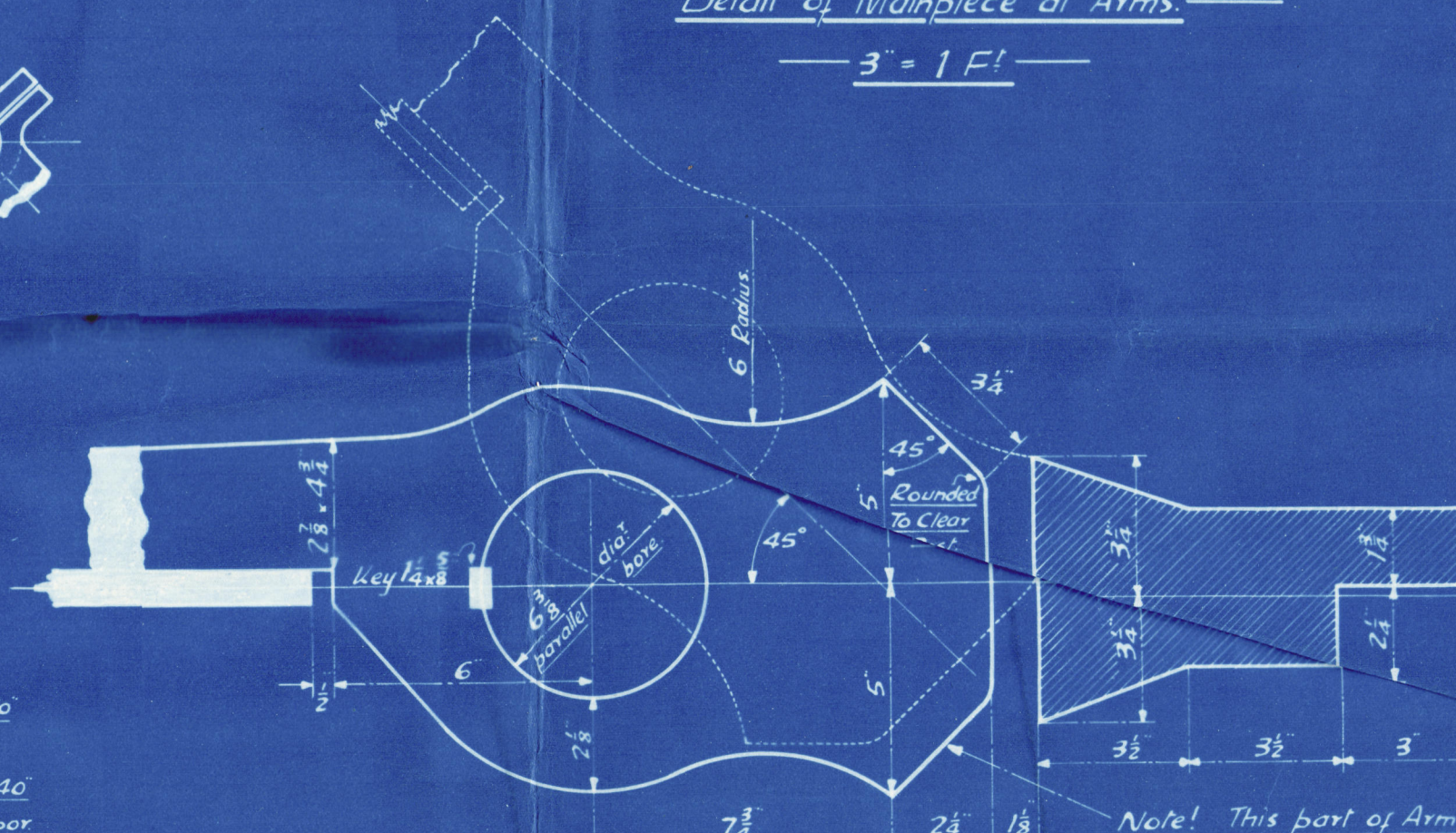
Steering Rods $\frac{13}{16}$ dia^r



-Detail of Quadrant Stop.



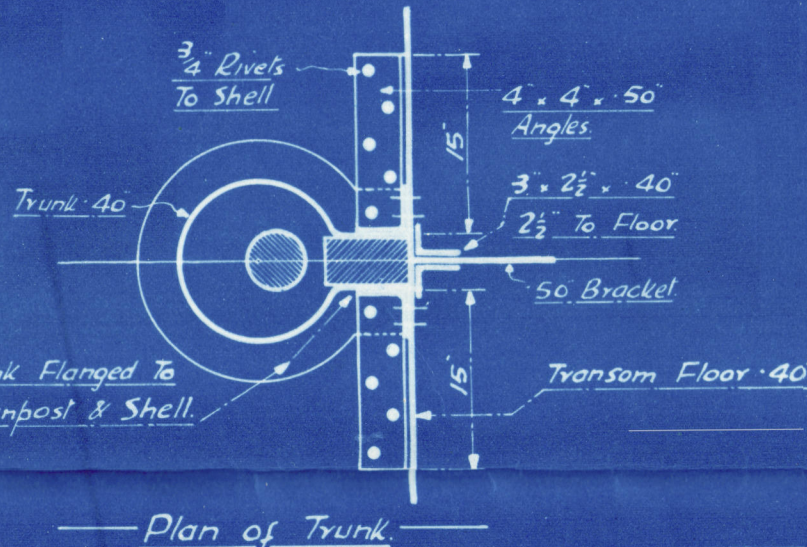
— Detail of Mainpiece at Arms.

$$-3'' = 1 F!$$


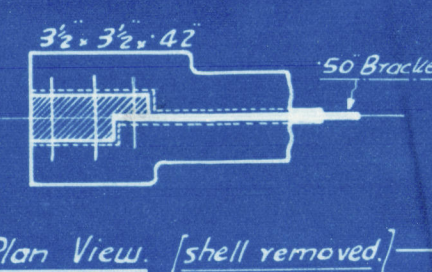
—Detail of Stopper

———— 3" = 1 F! ————

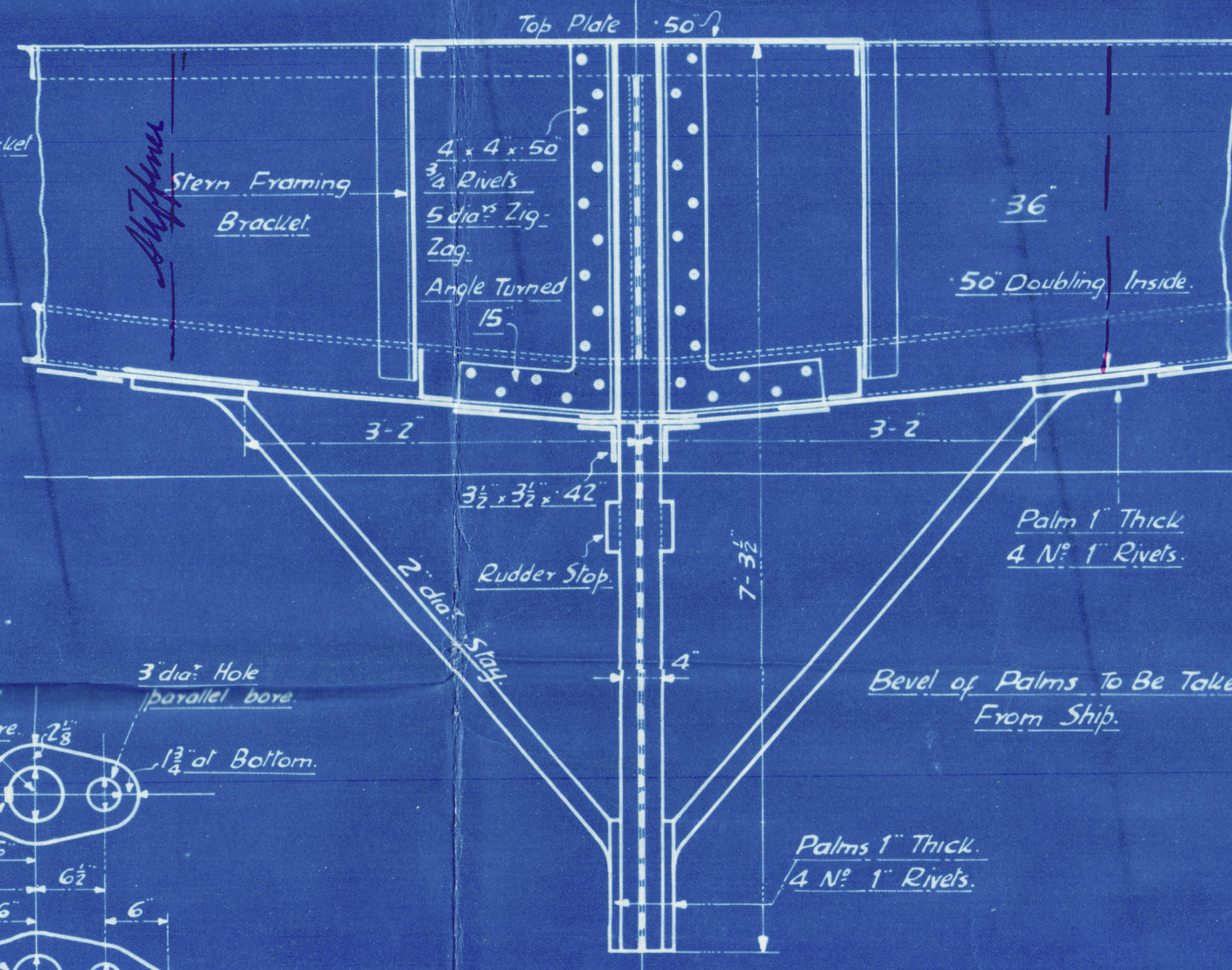
Note! This part of Arm
To Be Carefully Cut or Chipped
To Allow Rudder To Go Over
To 45° , also To Have a Bearing
of 3' against Post.



- Plan of Trunk.

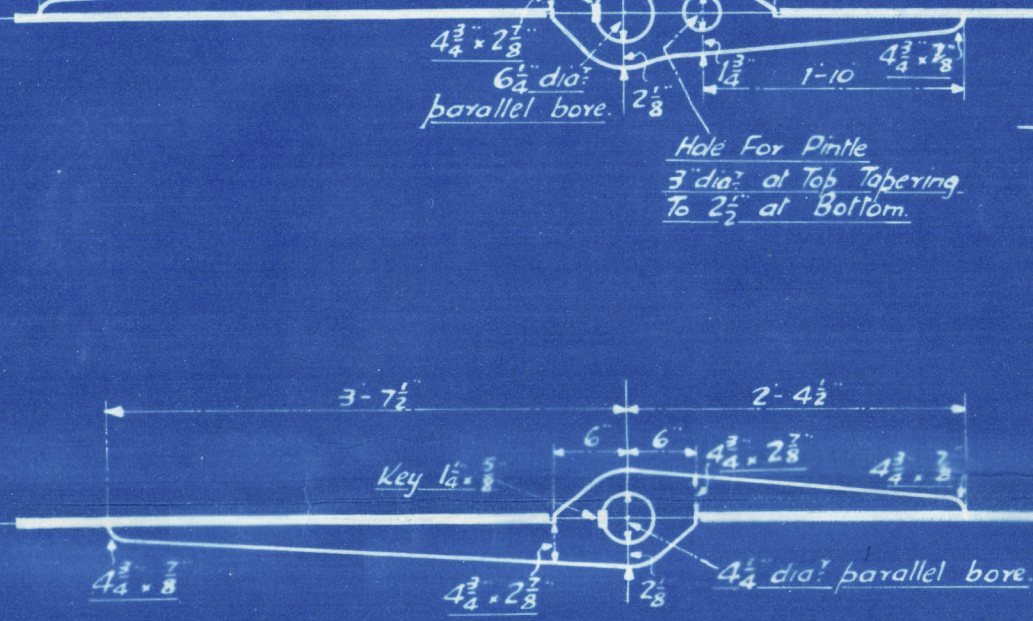


- Plan View. [shell removed.

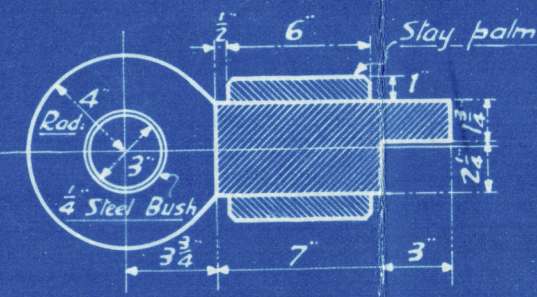


—Section at Transom Floor.

—Looking Forward.



Sternpost & Rudder Frame of Forged Steel.



- Plan of Bottom of Sternpost.

$$1\frac{1}{2}'' = 1 F!$$

- Drawing N° 8794 - "S" -

Philip & Son

No. 691.

Rudder & Stetnham

$\frac{8}{5}$ Plymouth

Disel
813.



© 2020

Plymouth

Lloyd's Register
Foundation

006523-006535-0004