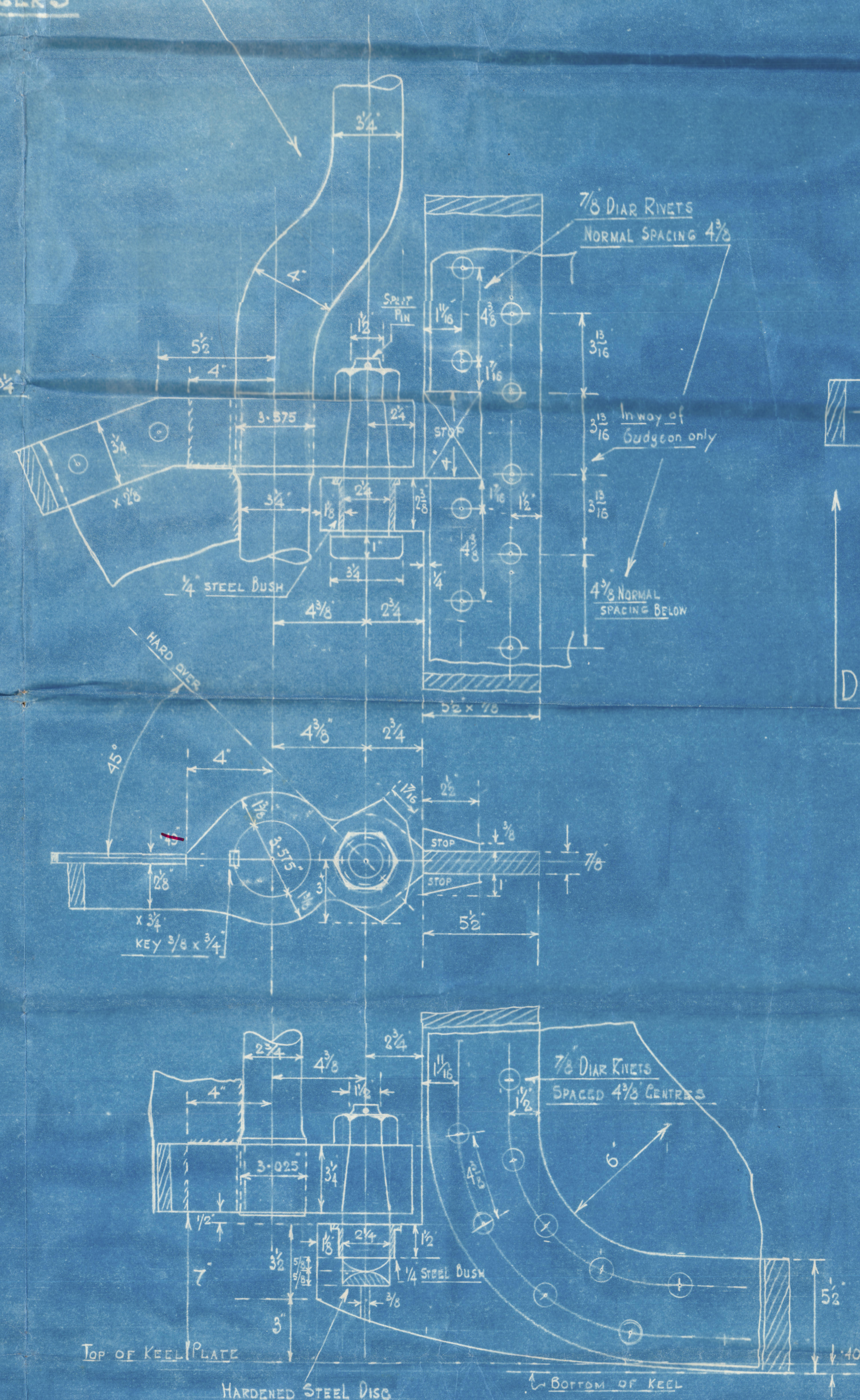


TWIN SCREW STEEL PASSENGER FERRYBOAT. YARD NO 51.
FOR THE TYNE IMPROVEMENT COMMISSION.
STERNFRAME AND RUDDER
SCALE 1" & 3" = 1 FOOT

for 2000 tons on the River Tyne
VESSEL TO CLASS LLOYDS 100A WITH FREEBOARD
FOR RIVER SERVICES AND TO REQUIREMENTS OF
BOARD OF TRADE FOR A PASSENGER FERRYBOAT
OPERATING ON RIVER TYNE.
ST. 5 CERTIFICATE FOR 270 PASSENGERS

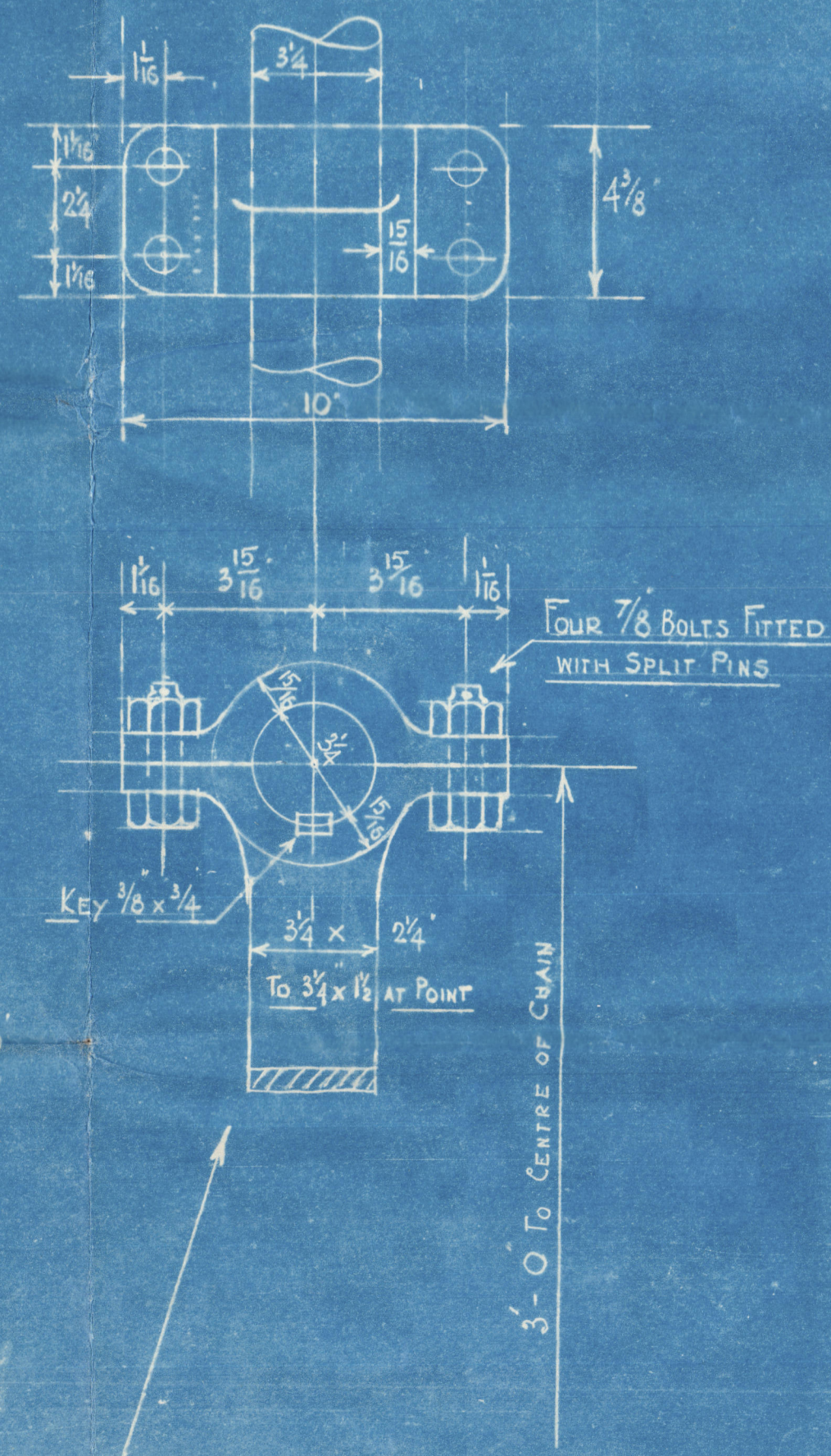
AREA OF RUDDER 14.29 SQ FT.
 C.G. ABAFT CENTRE LINE OF PINTLES 1.37 FEET. A x D = 19.57
 SPEED BELOW 12 KNOTS. (MAX. 9 1/2 KNOTS)
 LLOYDS DIAB. 2.7" OWNERS REQUIREMENTS + 1/2" = 3.2" DAY 2 1/2"
 HARD OVER TO HARD OVER 90"
 DIAB. OF CHAINS = 1/2" PROOF TEST 3 TONS
 DIAB. OF RODS = 9/16"
 DIAB. OF STEERING SHEAVES 8" CENTRES.
 PROOF TEST ON STEERING BUFFERS & SCREWS 3 1/4 TONS
 DIAB. OF RUDDER HEAD 3 1/4". HEEL 2 3/4"
 PINTLES 2 1/4". RUDDER ARMS 3 1/4" x 2 1/4" TO 3 1/4" x 1/4" AT POINT
 ARM THICKNESS AROUND MAINPIECE 1 1/8"
 RUDDER PLATE 1 1/2" (ARMS 35" APART)

DETAIL OF UPPER RUDDER ARM & GUDGEON
SCALE 3" = 1 FOOT

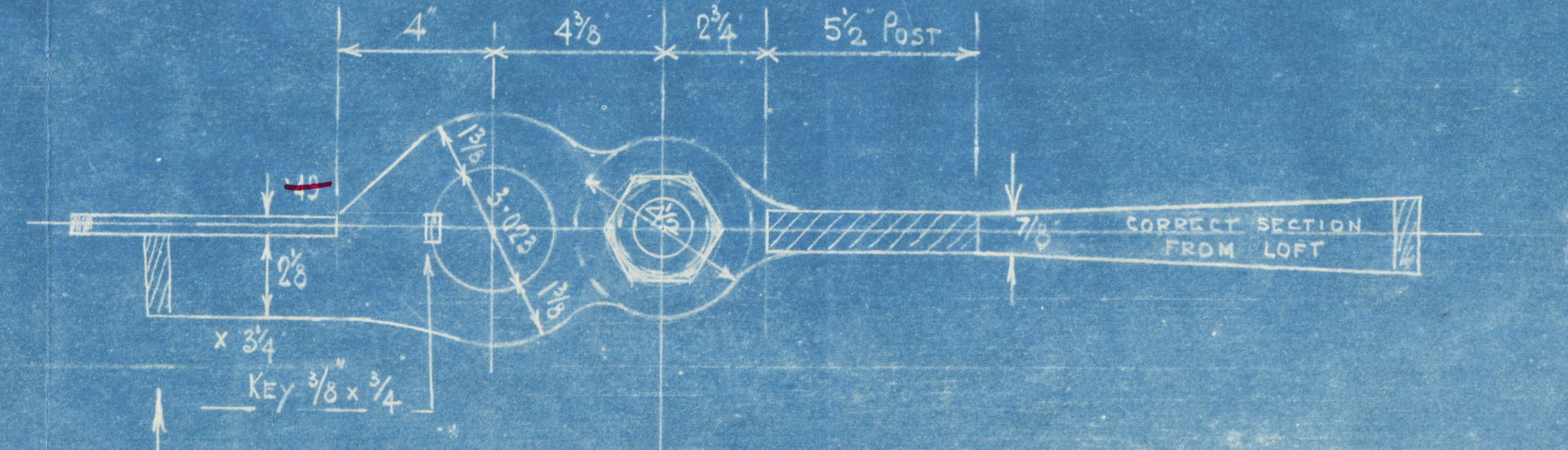


STERNFRAME OF FORGED SCRAP STEEL
RUDDER STOCK OF FORGED INGOT STEEL
RUDDER ARMS OF FORGED SCRAP STEEL
QUADRANT ARM & HAND TILLER OF WROUGHT IRON.
ALL TO LLOYDS & B.O.T REQUIREMENTS
AND TESTS

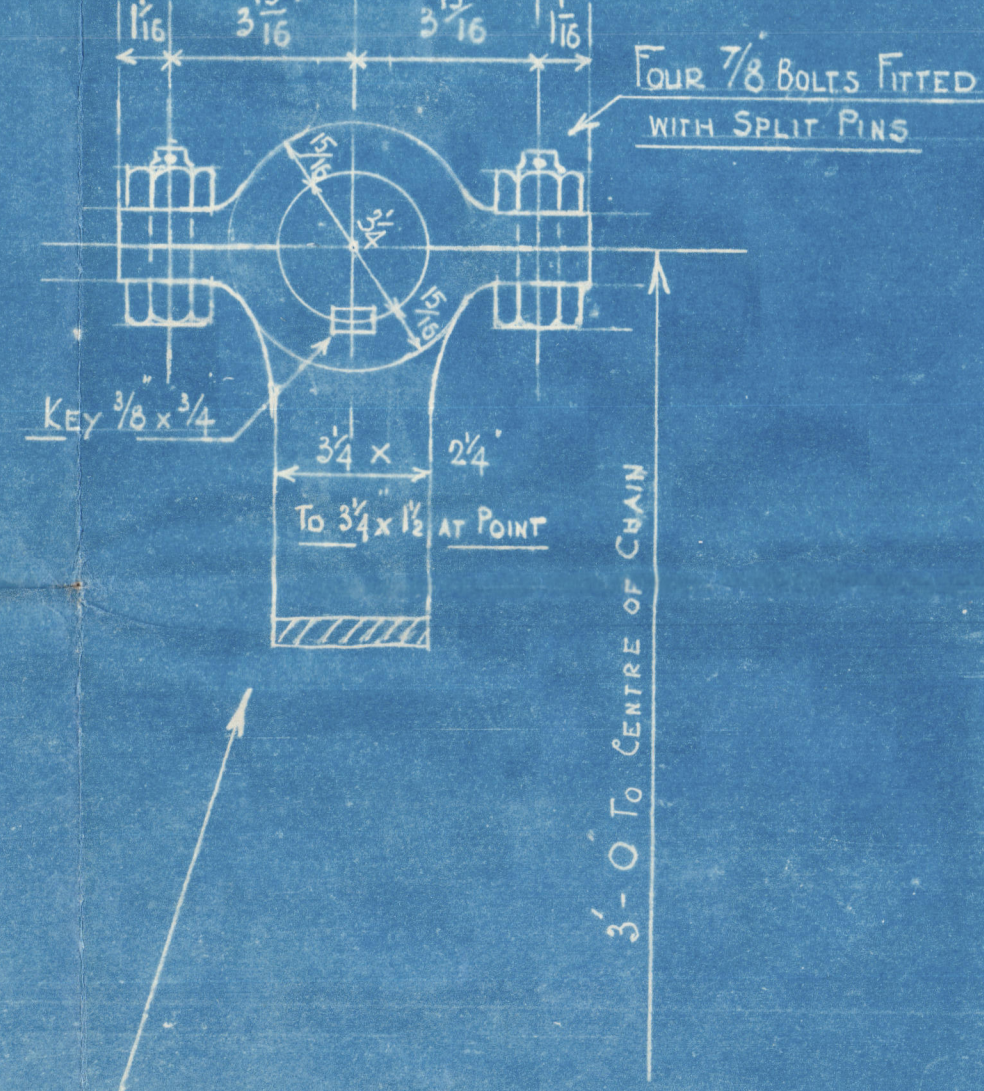
DETAIL OF INTERMEDIATE RUDDER ARM & BEARING PINTLE
SCALE 3" = 1 FOOT



DETAIL OF LOWER RUDDER ARM & HEEL GUDGEON
SCALE 3" = 1 FOOT



DETAIL OF QUADRANT ARM
SCALE 3" = 1 FOOT

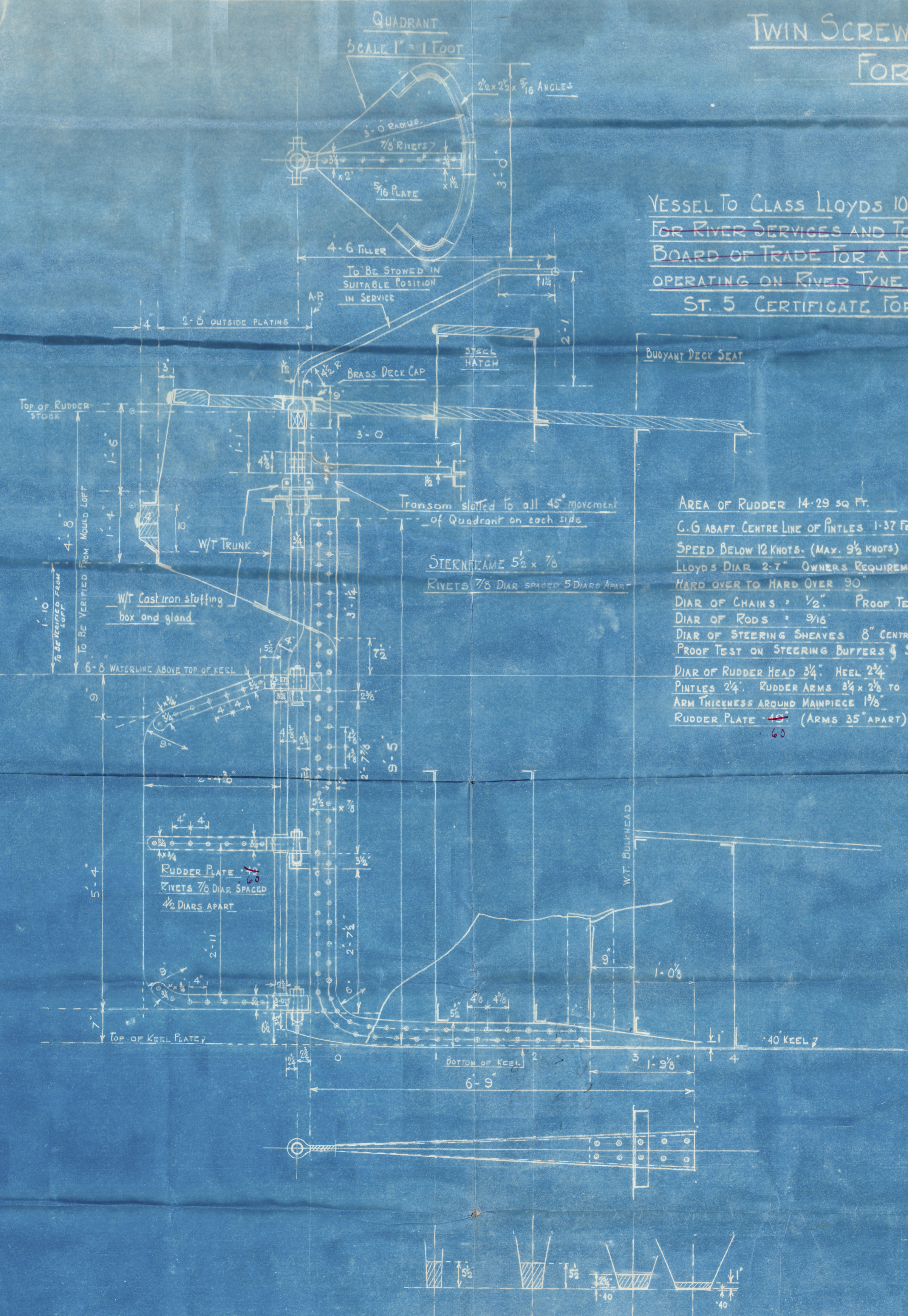


CLELANDS (SUCCESSORS) LTD.
 WILLINGTON- QUAY- ON TYNE.

W.T.
 11.5.39

PLAN NO. 3690
 PRINT NO. 12678

FRAME 1 FRAME 2 FRAME 3
 CORRECT SECTIONS WILL BE SUPPLIED FROM MOULD LOFT



Nº 51.

STERNFRAME &
RUDDER

CLELAND'S

A. S. S. "Sollingwood"

NEWCASTLE ON TYNE.

Report No. 98510.

006467-00641-0030



© 2020

Lloyd's Register
Foundation