

# Nº126

## MIDSHIP SECTION

SCALE  $\frac{1}{2}$ "=1 FOOT

### DIMENSIONS

LENGTH BETWEEN P.P. 186'0"  
BREADTH MOULDED 29'0"  
DEPTH 16'2"

27.6-00 } Lino to A.R. Brown in Barham  
5.7-00 } Co. (No.)  
12.7-00

### NUMERALS

$\frac{1}{2}$  BREADTH 14.5  
DEPTH 16.916  
 $\frac{1}{2}$  GIRTH 28.771  
60.19 1<sup>ST</sup> NR  
x 184.83  
11124.9177 2<sup>ND</sup> NR

### PROPORTIONS

L:D 1092  
L:B 637

### EQUIPMENT NUMBER

11125 x  $\frac{1}{2}$  = 1390.62  
x 121.25  
168612.67  
906.52 914.4 = 12037  
11125 11125  
12037 EQUIPMENT NUMBER

### EQUIPMENT

15% C.W.T.S. EX STOCK  
BOWER ANCHOR 15%  
13  
STREAM ANCHOR 5%  
KEDGE 2%  
STUD CHAIN CABLE 1 1/2" DIA. 210 FATHOM ON EVERY BEAM  
Special FLEXIBLE STEEL WIRE 2 1/2" GIRTH DO " test 22 tons  
FOR STREAM ANCHOR  
FLEXIBLE STEEL WIRE 3" 90"  
TOWLINE  
HAWSEERS 6" 90"  
WARPS 5" 90"

STEM 7x2 1/2"

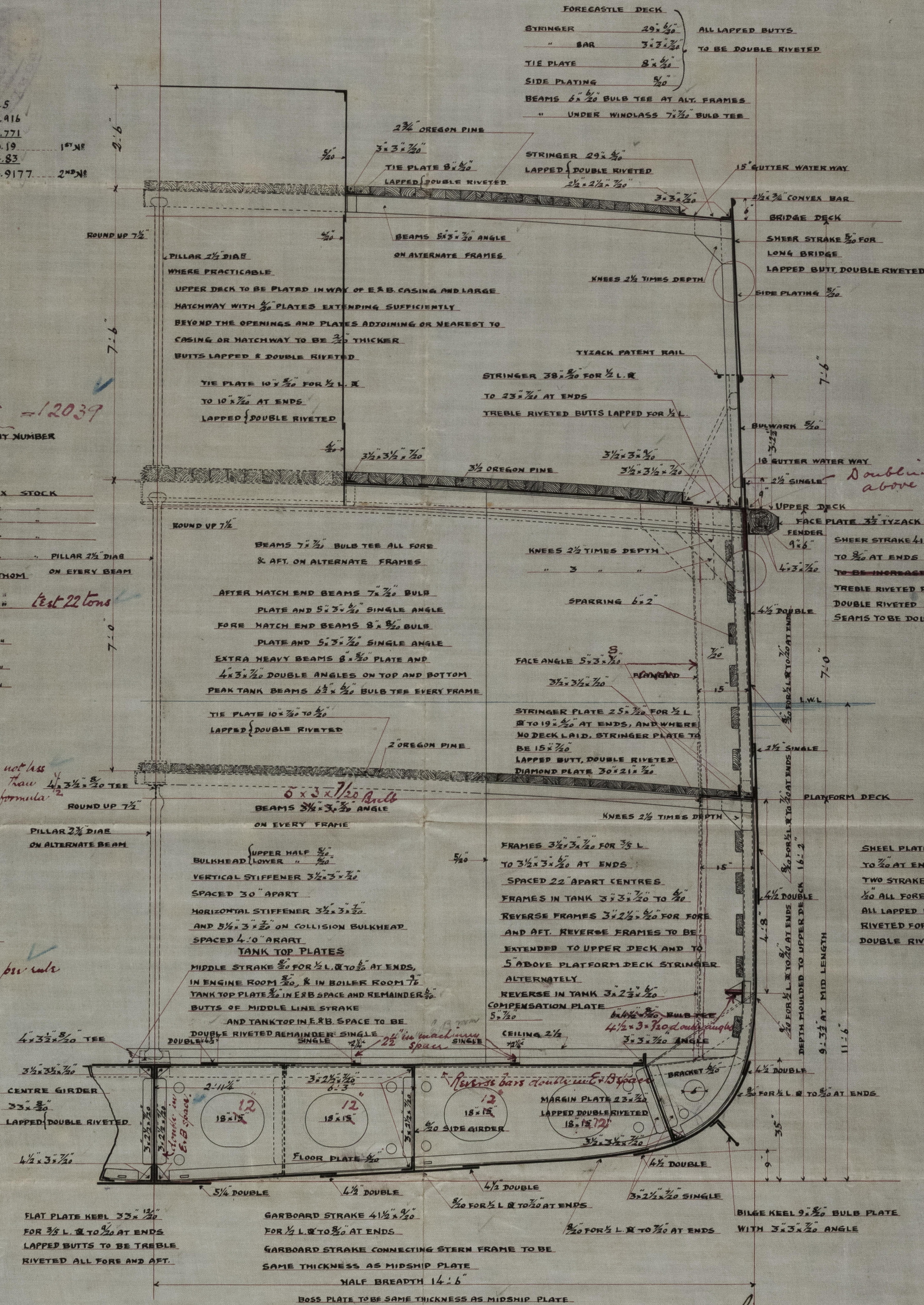
STERN FRAME 7x4 1/2"

RUDDER HEAD 4 1/2"  
PINITE 2 1/2"  
PLATE 130  
MAIN PIECE AT HEEL 3 1/2"

ORDINARY FLOOR 17 1/2" x 3/4" FOR 3/4" L  
TO 1/2" AT ENDS

### SPECIAL NOTE

THE FLOOR PLATES AND OTHER PARTS  
OF THE INNER BOTTOM IN THE E.S.B.  
SPACE TO BE AS PER RULE  
increased in Boiler Space 2 1/2" as per rule  
SHAFT TUNNEL PLATE TO BE 5/8"  
VERTICAL STIFFENER 3 1/2" x 3/4"  
SPACED 24" APART



A. L. Jones

17/10  
26/10  
5.7.00

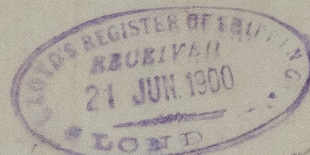
MITSUBISHI  
DOCKYARD & ENGINE WORKS  
NAGASAKI  
Drawn by  
Traced by  
Checked by  
Date

© 2020

Lloyd's Register  
Foundation



Melita Bishi  
No 126 Sfs  
Riadhip Section



Pura Maru  
Nag. 234



*Handwritten notes in vertical column:*  
No 126  
Sfs  
Riadhip  
Section  
No 126  
Sfs  
Riadhip  
Section

NO 126 SFS RIADHIP SECTION

NO 126

SCAFFOLD - 1000

DIMENSIONS  
LENGTH BETWEEN PERPENDICULARS  
BREADTH MOUNTED  
DEPTH



© 2020

Lloyd's Register Foundation

006364-006386