

There are no load line markings on the ship's side at present, nor are there any certificates on board.

Index No. 38186  
(For London Office only).

Lloyd's Register of Shipping.

SURVEYS FOR FREEBOARD.

(CONDITIONS OF ASSIGNMENT.)

EMPIRE TIGOMBO

Ship's Name *ex* "HOWACHT"

Port of Survey *FLENSBURG & GRANTEMOUTH.*

Official Number *186759.*

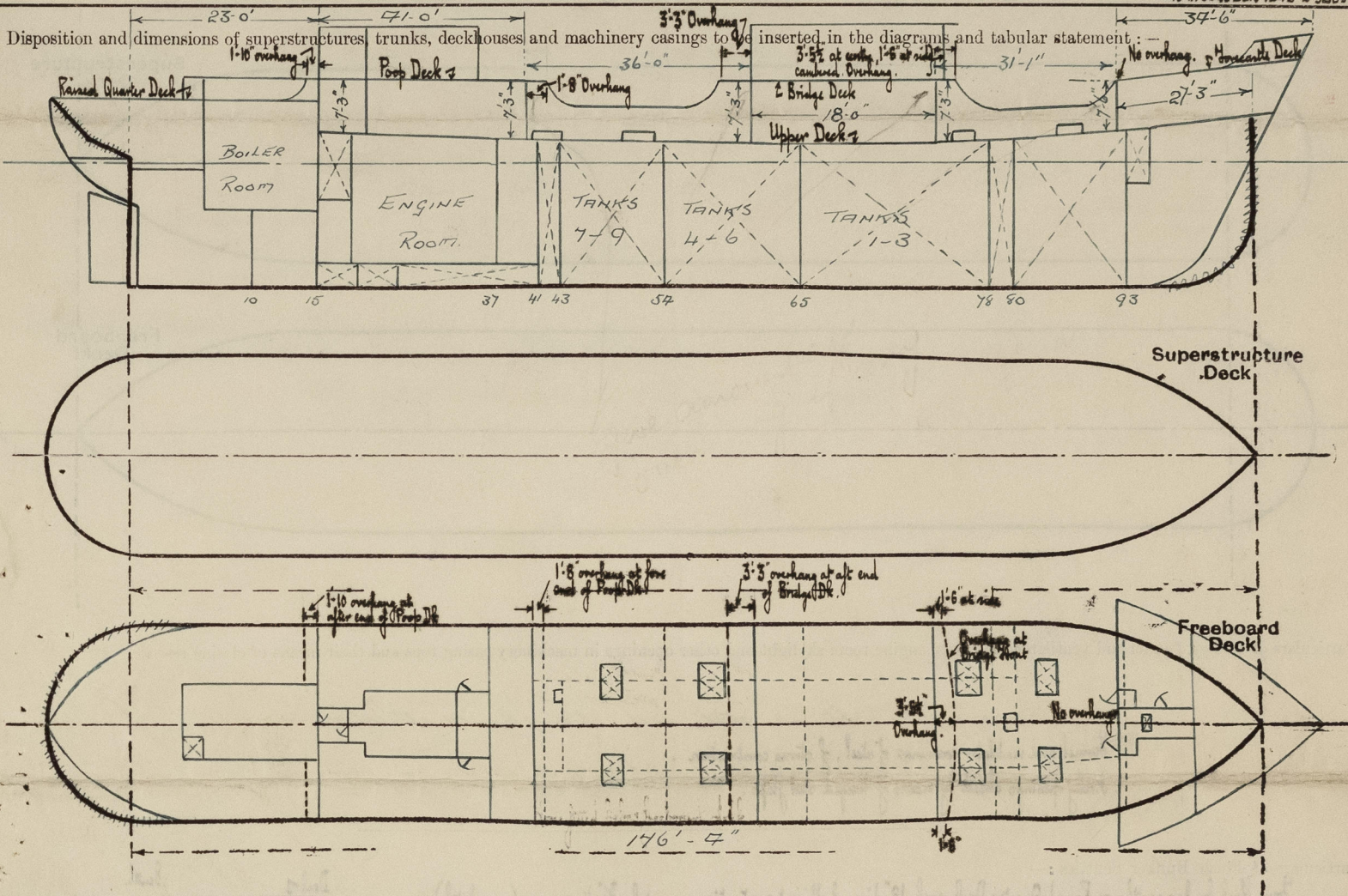
Surveyor's Signature *R. E. Pritchard.*

*James M. Windsor*

Nationality and Port of Registry *BRITISH. LONDON.*

Date of Survey *10<sup>th</sup>, 17<sup>th</sup> & 22<sup>nd</sup> August, 1945.*

*15<sup>th</sup> OCTOBER 1945 & SUBSEQUENT DATES.*



Particulars of Superstructures, Trunks, Casings, Deckhouses.

	Coaming	Plating	Stiffeners	Spacing	End Attachments of Stiffeners	Size of Openings	Height of Sills	Height of Casings
Poop Bulkhead ...	45" x 30"	30"	5" x 2 1/2" x 32" O.A. welded toe on.	25 1/2"	Welded direct top and bottom.	1 at 5'-3" x 23 1/2"	17 1/2"	7'-3"
Raised Quarter Deck Bulkhead ...								
Bridge, After Bulkhead ...	29 1/2" x 30"	30"	3" x 2" x 30" O.A. welded toe on.	27"	None	3 at 5'-3" x 23 1/2" 1 at 5'-3" x 44"	17"	7'-3"
Bridge, Forward Bulkhead ...	33" x 38"	38"	4" x 3" x 35" O.A. welded toe on.	23"	Welded direct to deck at bottom. No connection at top.	Intact	-	7'-3"
Forecastle Bulkhead ...	27 1/2" x 30"	30"	3" x 2 1/2" x 30" O.A. welded toe on.	27 1/2" to 32 1/2"	None.	2 at 5'-3" x 23 1/2"	18 1/2"	7'-6"
Trunk, Aft ...								
Trunk, Forward ...								
Exposed Machinery Casings on Freeboard or Raised Quarter Decks ...	18" x 30"	25"	4" x 3" x 38" O.A. welded toe on.	20"	Bracketed at top. No connection at bottom.	1 at 20 1/2" x 18 1/2"	19 1/2"	4'-9"
Exposed Machinery Casings on Superstructure Decks ...								
Machinery Casings within Superstructures not fitted with Class I Closing Appliances ...								
Deckhouses on Flush Deck Ships ...								

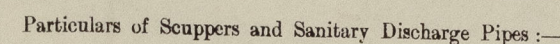
Particulars of Closing Appliances (state if capable of being manipulated from both sides).

Poop Bulkhead ...	One hinged steel watertight door, capable of being operated from both sides.
Raised Quarter Deck Bulkhead ...	
Bridge, After Bulkhead ...	Three hinged steel watertight doors, each capable of being operated from both sides. One hinged steel double watertight door, capable of being operated from both sides.
Bridge, Forward Bulkhead ...	Intact.
Forecastle Bulkhead ...	Two Hinged steel doors, operated from both sides 5'-3" x 2'-0", height of sill 1'-6"
Exposed Machinery Casings on Freeboard or Raised Quarter Decks ...	One hinged steel door, capable of being operated from one side only (ash hoist).
Exposed Machinery Casings on Superstructure Decks ...	
Machinery Casings within Superstructures not fitted with Class I Closing Appliances ...	
Deckhouses on Flush Deck Ships ...	



Empire Tigombo.

Particulars of Gangway Cargo and Coaling Ports:—



W.C. Washbasin and Sucker Discharge from crew's washbasins in house and after bridge led overboard below futwared deck fitted with automatic non-return valves at steeper side.  
Washbasin Discharges from forward bridge led out through bridge bulkhead & thence overboard through bulkhead above futwared deck, no valve fitted.  
Sucker from refrigerated space in bridge led overboard above futwared deck fitted with automatic non-return valve at steeper side & stopcock at inward end in an accessible position.  
W.C. Washbasin and Sucker Discharges from lower bridge deck led overboard below futwared deck, no valves fitted.

side-scuttles in after bridge. 12" dia. of strong construction.  
All fitted with efficient hinged headlights.

Engine room skylight is steel and strongly constructed.  
Hunnel and ventilator coverings of steel, of strong construction.  
Hobley openings closed by means of hinged steel flaps.

Flush bunker scuttles on Raised Quarter Deck, each 12" diam., of efficient construction, secured by  $\frac{3}{4}$ " diam. screws (see sketch).  
with chain attachment *none*.



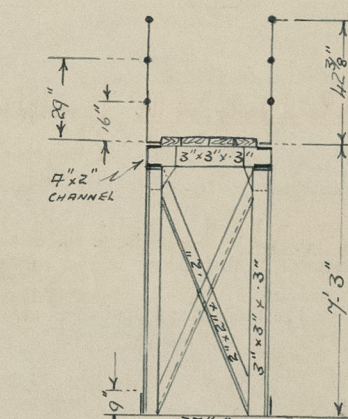
On Raised Quarter Deck Off: Incorporated in after end of boiler casing, giving access to crew accommodation aft, one opening  $5'3" \times 2\frac{1}{2}'$ , sill  $18\frac{1}{2}"$ , closed by means of hinged steel watertight door, capable of being operated from both sides.

Particulars of Ventilators in exposed positions on freeboard and superstructure decks :—

2-6" " " " " 36" x 1/4" to Engin' room.

Efficient means of closing provided

Forecastle front and sides, bridge deck sides, quarter deck and poop deck.



Between Poop and Bridge Decks and between Bridge and Forecastle Decks across

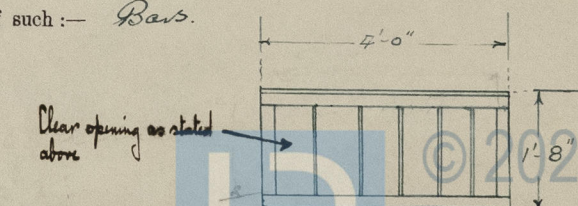
Fore and after well decks.

{ support at mid-length in fore well, spaced 12'-0" from bridge front.)  
" " " " after " " " 18'-0" " " " end.)

State position of each freeing port	... ..	{	After Well:—	Two, p 25
(F. and A. position and height above deck edge)			Forward Well:—	Two, p 2

State whether the freeing ports are fitted with shutters, bars, or rails, and give particulars of such:— *Bars.*

Additional area where sheer is less than standard.





# PARTICULARS OF PROTECTION TO OPENINGS, ETC.

HATCHWAYS ON FREEBOARD <del>AND SUPERSTRUCTURE</del> DECKS.										
Description of Hatchway	...	...	...	Ballast Tank	h.o.1 Cargo Tank P&S	h.o.2 Cargo Tank P&S	h.o.3 Cargo Tank P&S	h.o.4 Cargo Tank P&S	4th Offendain P.S.	7th Offendain 4/L
Dimensions of Hatchway	...	...	...	27" x 27"	24" x 24"	24" x 24"	24" x 24"	24" x 24"	18" x 16"	18" x 16"
COAMINGS	{	Height above Deck	...	27"	27"	27"	27"		24"	9"
		Thickness { Sides	...							
		Ends	...							
		Stiffeners	...							
Brackets, Stays	...									
HATCH BEAMS	{	Number	...							
		Spacing	...							
		Scantling and Sketch	...							
Bearing Surface	...									
FORE AND AFTERS	{	Number	...							
		Spacing	...							
		Unsupported Lengths	...							
		Scantling and Sketch	...							
Bearing Surface	...									
HATCH COVERS	{	Material	...	40" hinged steel	40" hinged steel	40" hinged steel	40" hinged steel	25" hinged steel	36" hinged steel	
		Thickness	...	W.T. covers secured by 7-1/8 dia toggle bolts	P.T. covers secured by 7-1/8 dia toggle bolts	P.T. covers secured by 7-1/8 dia toggle bolts	P.T. covers secured by 7-1/8 dia toggle bolts	W.T. covers secured by 5-1/8 dia toggle bolts	W.T. covers secured by 5-1/8 dia toggle bolts	
		How fitted	...							
		Bearing Surface	...							
Spacing of Cleats	...									
Number of Tarpaulins	...									

\*Are wood fore and afters steel shod at all bearing surfaces? -

Are battens and wedges efficient and in good condition? -

Are tarpaulins in good condition and in accordance with rule requirements? -

Are lashings provided in accordance with rule requirements? -

Particulars of any special features:—

Skylight on Rained Quarter Deck aft. of steel and of strong construction, fitted with hinged steel flap secured by means of 5 toggle bolts.

Skylight at fore end of Poop Deck. of steel and of strong construction, fitted with hinged steel flap secured by means of 3 toggle bolts.

Endorsement at first survey and at surveys for renewal of Certificate:—

The fittings and appliances are in accordance with the particulars shown on this form (or as now modified) and are in good condition.



© 2021

Lloyd's Register Foundation