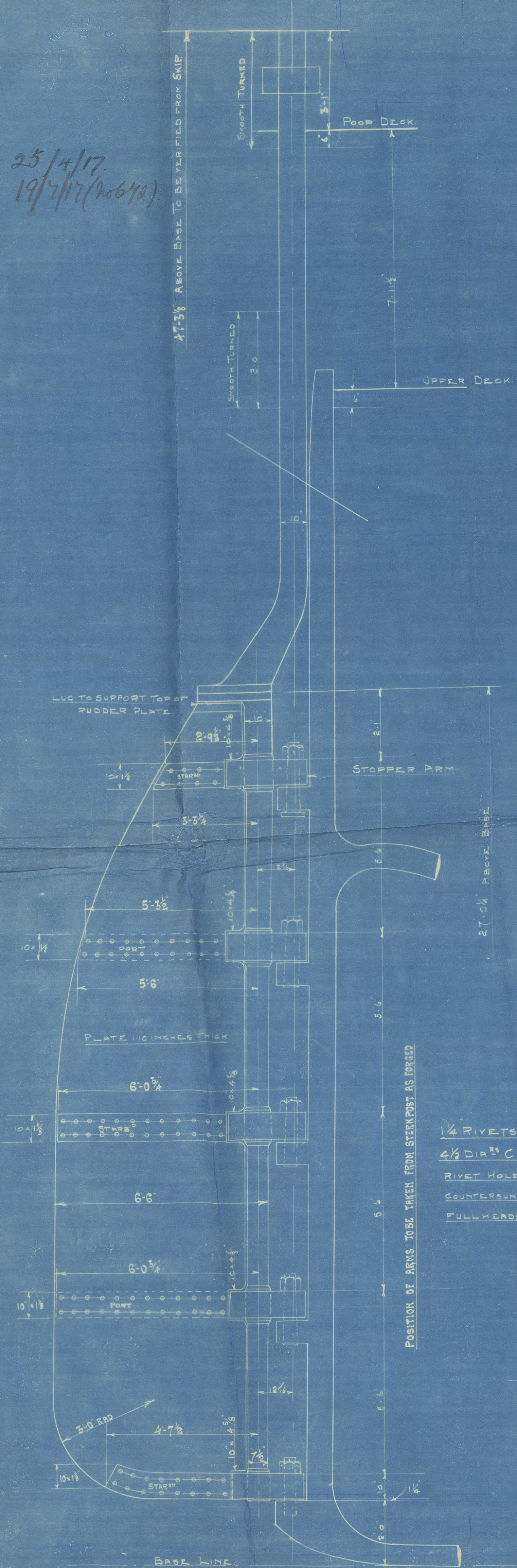
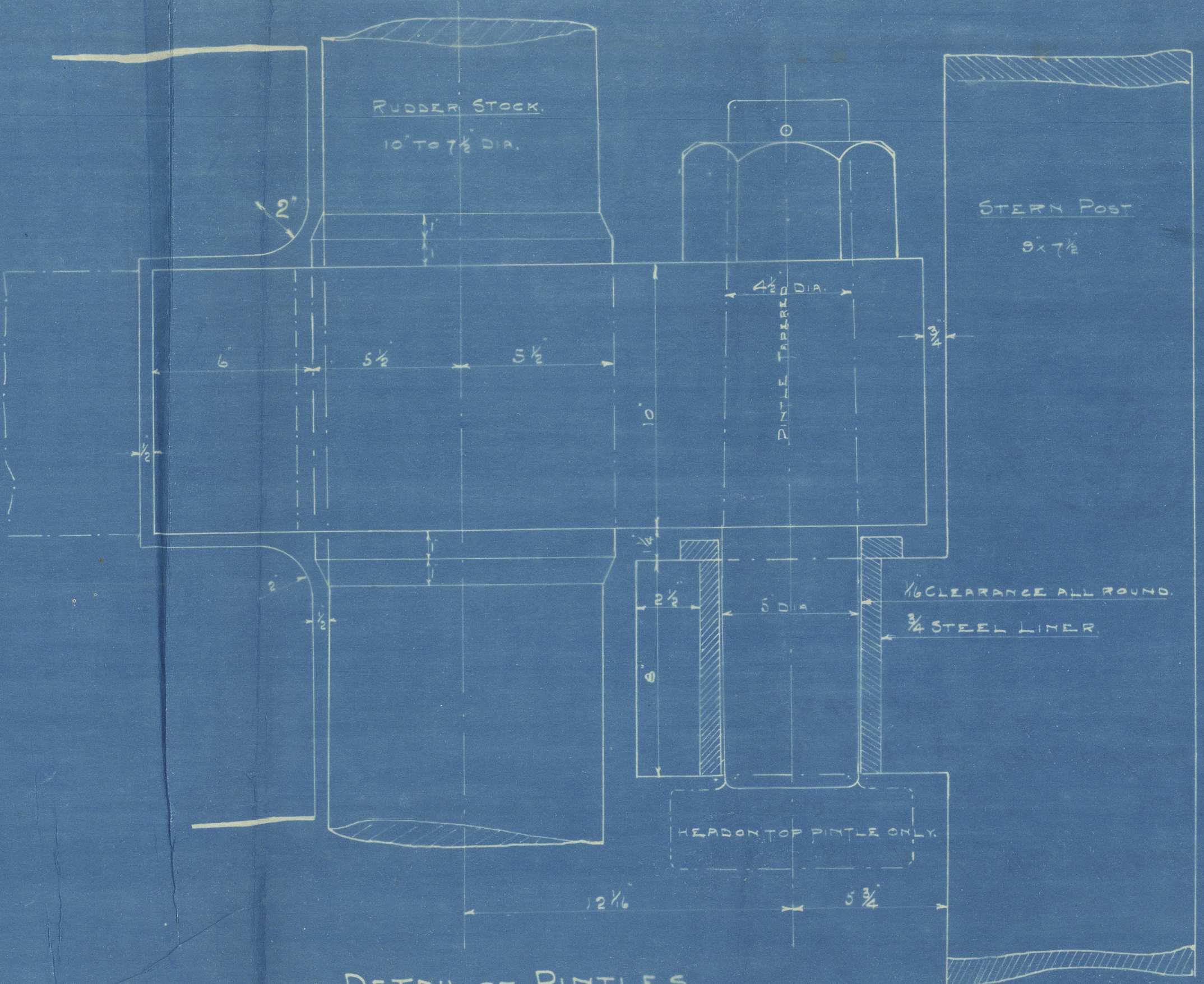


25/4/17.
19/7/17 (20672)

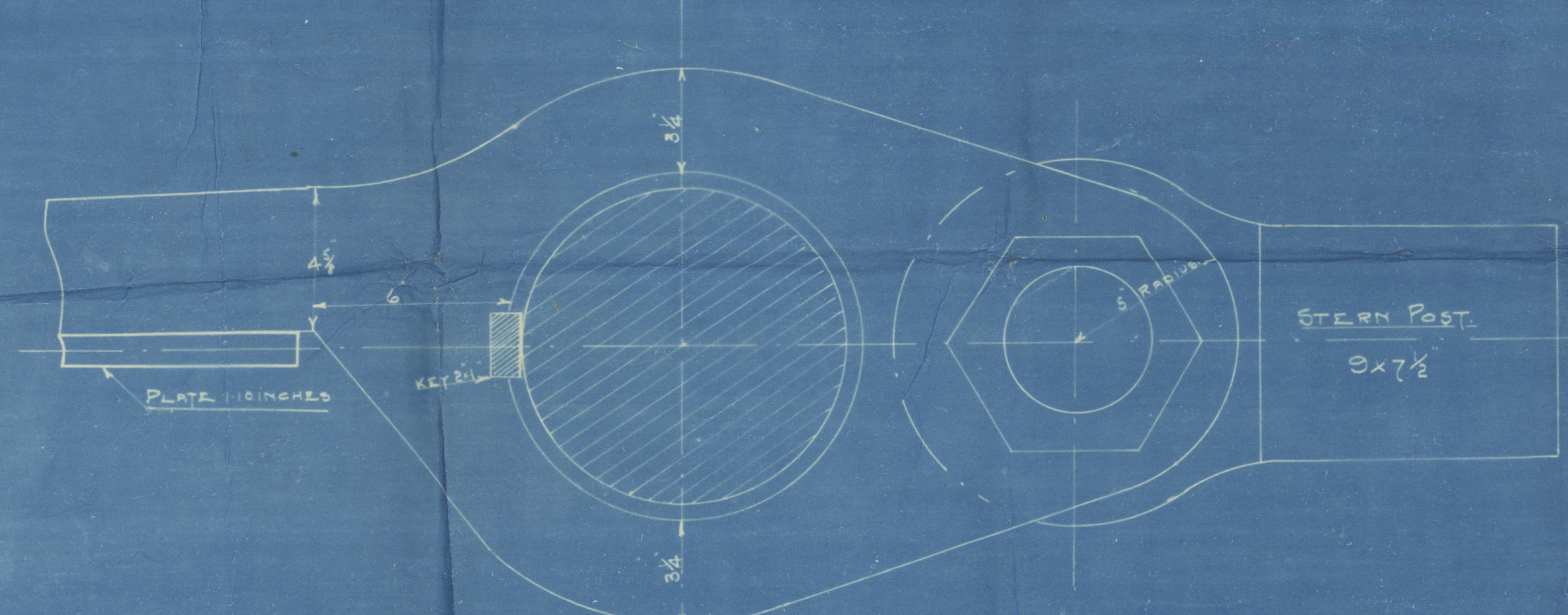


POSITION OF ARMS TO BE TAKEN FROM STERNPOST AS INDICED

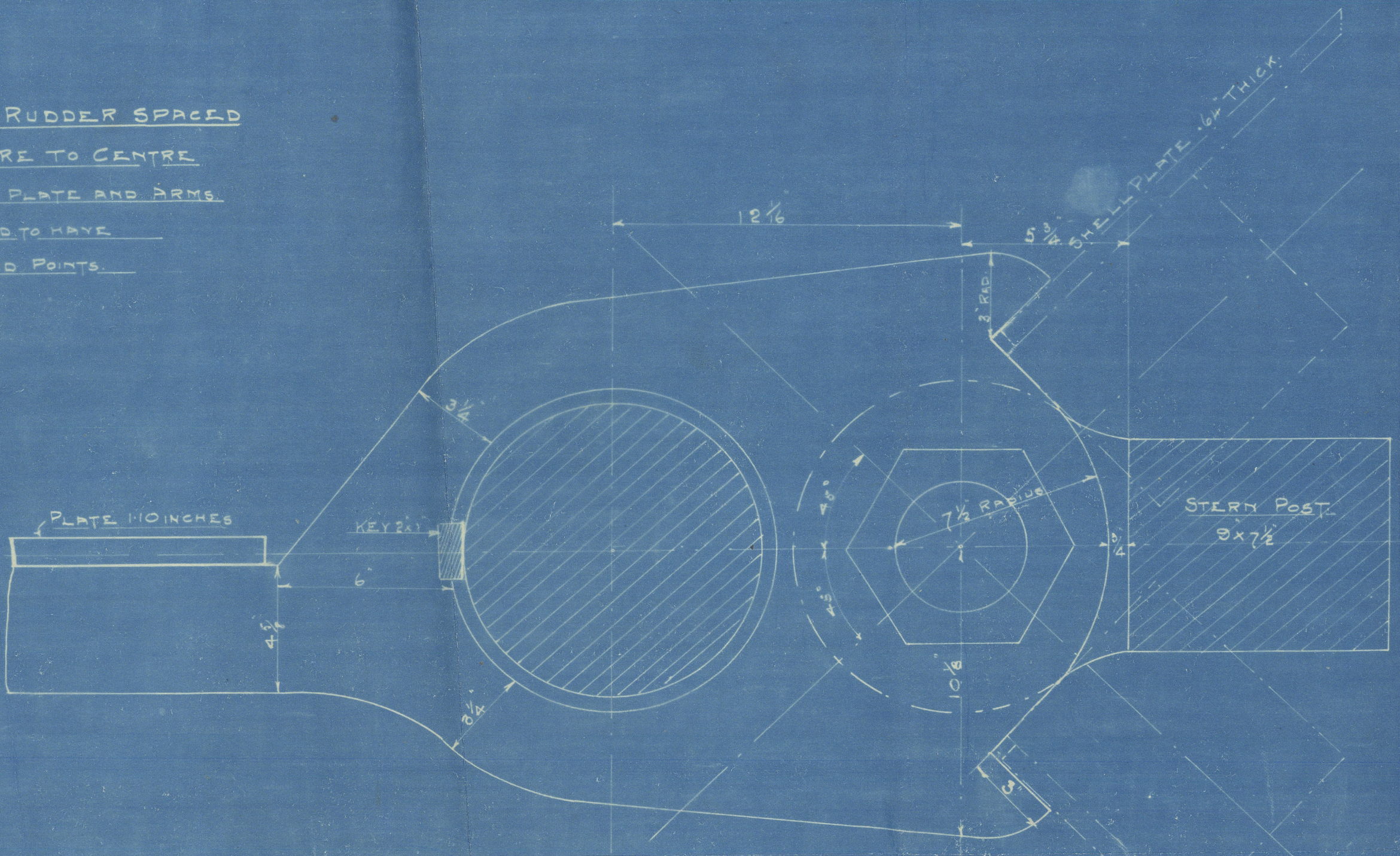
1 1/2 RIVETS IN RUDDER SPACED
4 1/2 DIA. CENTRE TO CENTRE
RIVET HOLES IN PLATE AND ARMS
COUNTERSUNK AND TO HAVE
FULLHEADS AND POINTS



DETAIL OF PINTLES



DETAIL OF ARMS



DETAIL OF STOPPER ARM

RUDDER PLAN FOR 400' STANDARD STEAMERS.

SCALE 1/2 INCH = 1 FOOT.

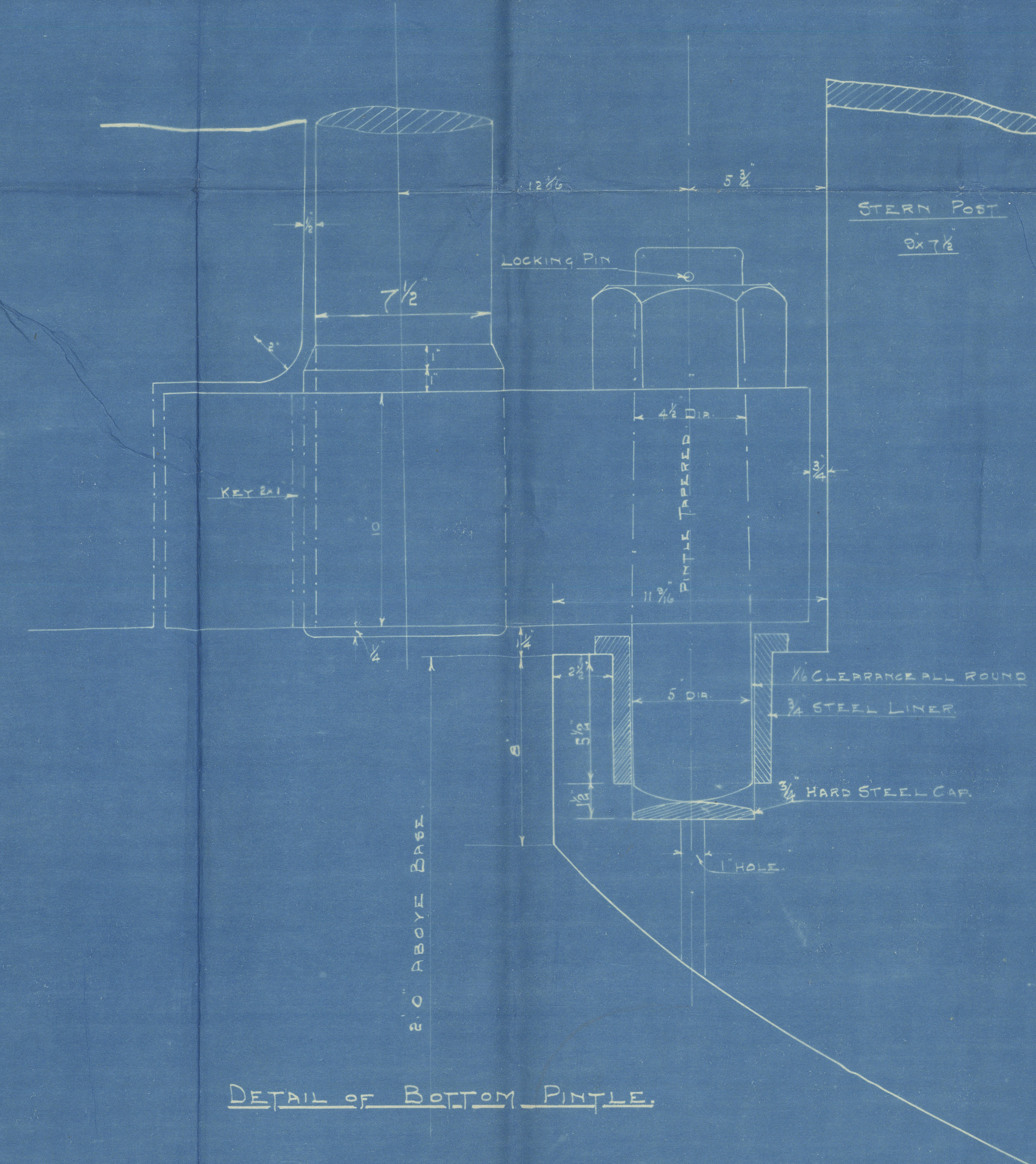
DETAILS 3 INCHS = 1 FOOT.

RUDDER HEAD 10" DIA. PINTLES 5" DIA. SPEED UNDER 12 KNOTS.

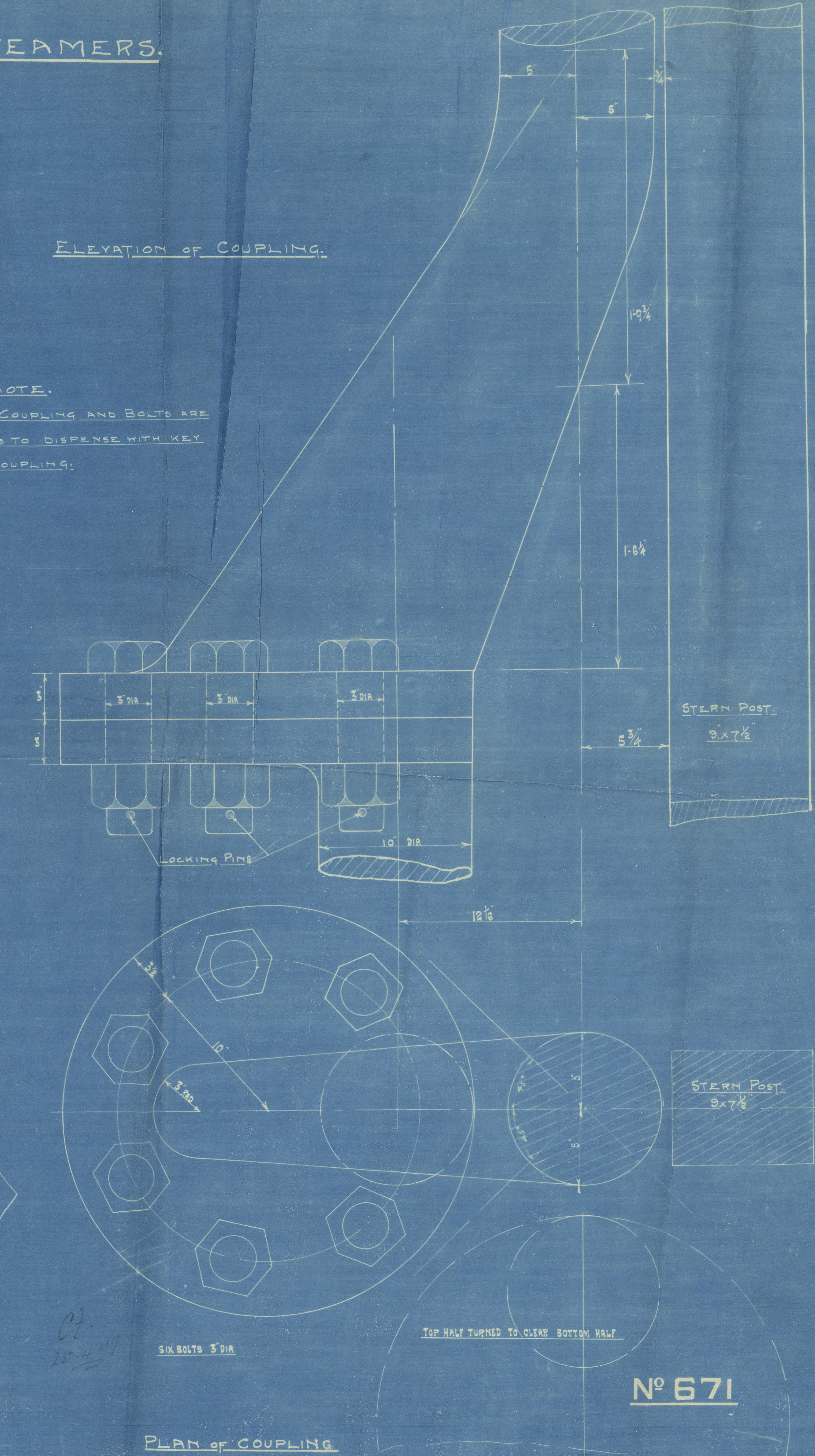
RUDDER STOCK 10" DIA. AT HEAD TO 7 1/2" AT HEEL
WITH STRAIGHT TAPER BETWEEN, EXCEPT IN
WAY OF ARMS, WHERE IT IS TURNED 1" LARGER
THAN DIA. OF STOCK ABOVE ARM, AND IS PARALLEL
FOR 1" ABOVE AND BELOW ARM.
NUTS ON TOP OF PINTLES TO BE 6 3/4" OVER THE FLATS AND 4 1/2" DEEP.

NOTE.

DIMENSIONS OF COUPLING AND BOLTS ARE
ARRANGED SO AS TO DISPENSE WITH KEY
IN COUPLING.



DETAIL OF BOTTOM PINTLE



07.
25.4.17

SIX BOLTS 5" DIA.

TOP HALF TURNED TO CLEAR BOTTOM HALF

PLAN OF COUPLING

Nº 671



Messrs Richardson & Co
No 671, 672

Rudder plan showing
revised coupling

Standard "B"

No 671. Hs. War Vulture
Missesbrough Report 10132

No 672. Hs. War Petrich
Missesbrough No. 10183.



10/10

081
168
21
24

006272-006280-0163