

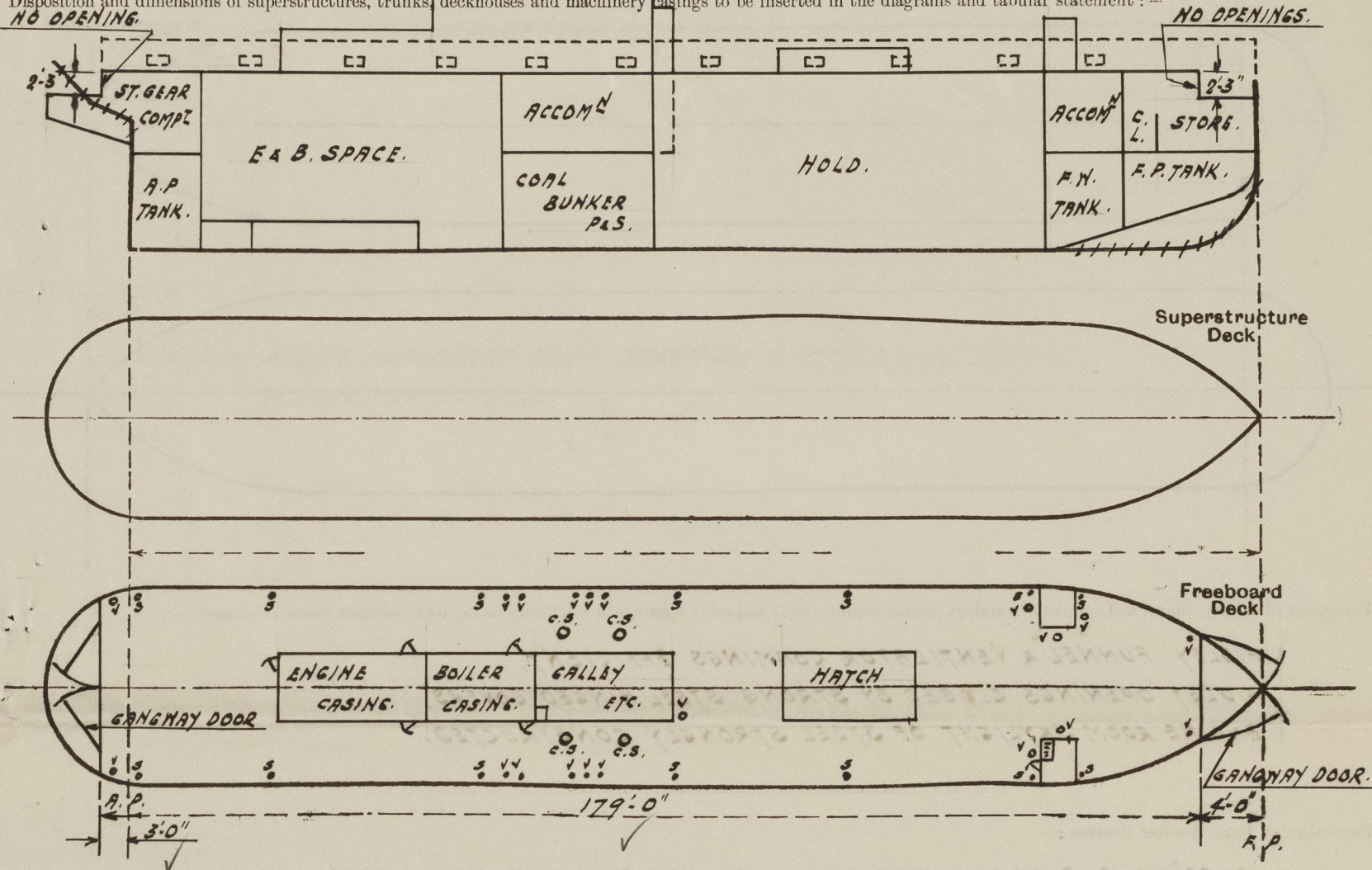
Lloyd's Register of Shipping.
SURVEYS FOR FREEBOARD.
(CONDITIONS OF ASSIGNMENT.)

Index No. _____
(For London Office only).

GRK. REPORT N° 21564.

Ship's Name "DARICA." Port of Survey PORT GLASGOW.
Official Number _____ Surveyor's Signature J. A. Jamison
Nationality and Port of Registry TURKISH. ISTANBUL. Date of Survey WHILE BUILDING.

Disposition and dimensions of superstructures, trunks, deckhouses and machinery casings to be inserted in the diagrams and tabular statement: —



Particulars of Superstructures, Trunks, Casings, Deckhouses.

	Coaming	Plating	Stiffeners	Spacing	End Attachments of Stiffeners	Size of Openings	Height of Sills	Height of Casings
Poop Bulkhead	✓							
Raised Quarter Deck Bulkhead ...	✓							
Bridge, After Bulkhead	✓							
Bridge, Forward Bulkhead	✓							
Forecastle Bulkhead	✓							
Trunk, Aft	✓							
Trunk, Forward	✓							
Exposed Machinery Casings on Freeboard or Raised Quarter Decks ...	34"	30"	4"x3"x5/16"	22"-33"	BKTS. TOP.	5'0"4'10"x2'0"	18"	7'0"x12'0" ✓
Exposed Machinery Casings on Superstructure Decks	✓							
Machinery Casings within Superstructures not fitted with Class I Closing Appliances	✓							
Deckhouses on Flush Deck Ships ...	✓							

Particulars of Closing Appliances (state if capable of being manipulated from both sides).

Poop Bulkhead	✓
Raised Quarter Deck Bulkhead ...	✓
Bridge, After Bulkhead	✓
Bridge, Forward Bulkhead	✓
Forecastle Bulkhead	✓
Exposed Machinery Casings on Freeboard or Raised Quarter Decks ...	HINGED STEEL DOORS, MANIPULATED FROM BOTH SIDES. ✓
Exposed Machinery Casings on Superstructure Decks	✓
Machinery Casings within Superstructures not fitted with Class I Closing Appliances	✓
Deckhouses on Flush Deck Ships ...	✓



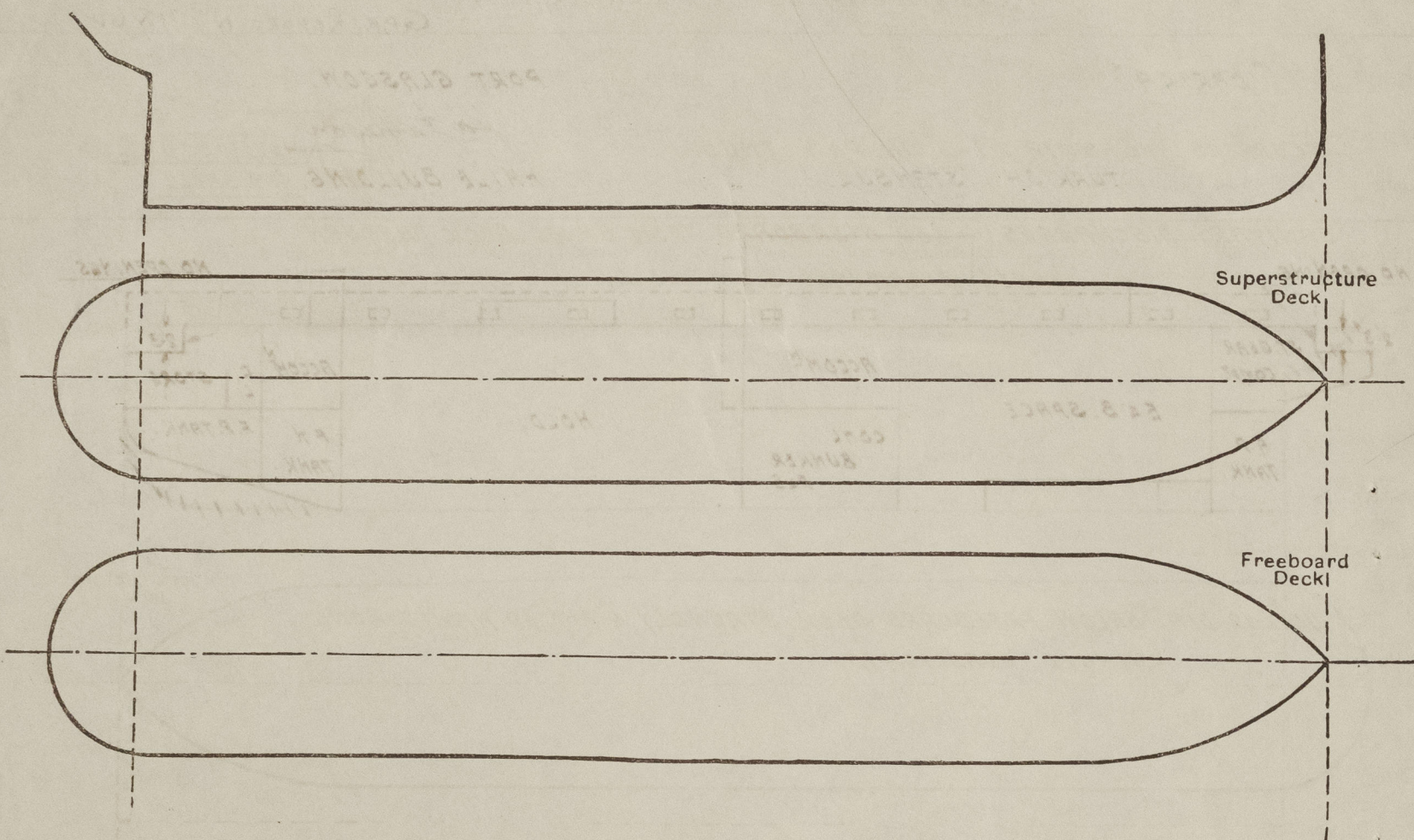
© 2020

Lloyd's Register Foundation

006258-006271-0148 1/2

PARTICULARS OF PROTECTION TO OPENINGS, ETC.

The following diagrams should be used to indicate the positions of cargo and coaling hatchways, gangway, cargo and coaling ports, ventilators, companionways, etc., which would affect the seaworthiness of the ship:—



Particulars of fiddle, funnel and ventilator coamings, engine room skylight and other openings in machinery casing tops and their means of closing:—

FIDLEY, FUNNEL & VENTILATOR COAMINGS EFFICIENT.
FIDLEY OPENINGS CLOSED BY STRONG STEEL HINGED COVERS.
ENGINE ROOM SKYLIGHT OF STEEL STRONGLY CONSTRUCTED.

Particulars of Flush Bunker Scuttles:—

2-20" DIA. P&S ON FREEBOARD DECK TO COAL BUNKERS. CAST IRON
BAYONET JOINT. WITH CHAIN ATTACHMENT.

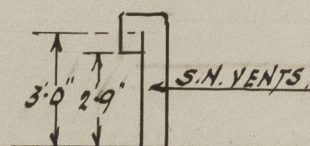
Particulars of Companionways:—

TO FORWARD ACCOMMODATION. STEEL HOUSE, STRONGLY CONSTRUCTED, WITH DOOR
4'-10" x 2'-0", 18" COAMING, MANIPULATED FROM BOTH SIDES.

Particulars of Ventilators in exposed positions on freeboard and superstructure decks:—

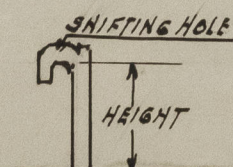
1-15" DIA. P&S. 4'-6" x 36" COAMING. TO HOLD. SUPPORTED.
1-9" DIA. PORT. 3'-0" x 32" " " CREWS' ACCOMM.
1-15" DIA. STARBOARD 3'-0" x 36" " " HOLD
1-8" DIA. PORT. 3'-0" x 32" " " FIREMEN'S ACCOMM.
7-8" x 4" S.N. P&S. 2'-9" x 32" " " BUNKERS ETC.
1-6" x 4" " " " " DRYING ROOM.

ALL VENTILATOR COAMINGS CLOSED WITH WOOD PLUGS & CANVAS COVERS.



Particulars of Air Pipes in exposed positions on freeboard, raised quarter, or superstructure decks:—

2-2 1/2" DIA. TO FORE PEAK TANK. 36" HIGH.
2-3" " " FRESH WATER TANK 36" " (AIR & FILLING)
2-2 1/2" " " FEED TANK 36" " " "
1-2 1/2" " " AFTER PEAK TANK. 36" " "
ALL AIR PIPES PROVIDED WITH WOOD PLUGS.



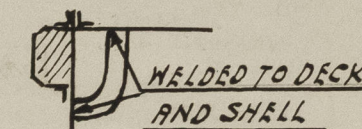
Particulars of Gangway ^{DOORS} Cargo and Coaling Ports:—

AT FORE & AFTER ENDS IN WAY OF BULWARKS, STRONGLY CONSTRUCTED.
(SEE ALSO SKETCH) ✓

Particulars of Scuppers and Sanitary Discharge Pipes:—

SCUPPERS: 6-5" DIA & 1-3" DIA. P&S. THUS: ✓

SANITARY DISCHARGES: LED OVERBOARD FROM UPPER DECK THROUGH
BRASS STORMVALVES ON SHELL. ✓



Particulars of Side Scuttles:—

10" x 12" DIA. BELOW FREEBOARD DECK. STRONGLY & FITTED WITH STRONG
HINGED DEADLIGHTS. ✓

Vertical distance of Sill of lowest Side Scuttle above top of keel 12'-10" ✓

Particulars of Guard Rails:—

NONE ✓

Particulars of Gangways, Lifelines, etc.:—

PROVISION MADE FOR RIGGING LIFELINES IN ALL PARTS OF THE VESSEL WHICH
MIGHT HAVE TO BE USED BY THE CREW IN THE REGULAR WORKING THEREOF. ✓

Particulars of Freeing Arrangements.						
	Length of Bulwark	Height of Bulwark	Size of Freeing Ports	Number each side	Area each side	Rule area each side
After Well	179'-0" 176'-0"	3'-9"	3'-0" x 1'-1 1/2"	11	374	24.6 sq ft for 7L.
Forward Well						

State position of each freeing port { After Well:— AS APPROVED

(F. and A. position and height above deck edge) { Forward Well:— 7'

State whether the freeing ports are fitted with shutters, bars, or rails, and give particulars of such:—HINGED FLAPS & ONE HORIZONTAL BAR.

Additional area where sheer is less than standard.

PARTICULARS OF PROTECTION TO OPENINGS, ETC.

HATCHWAYS ON FREEBOARD AND SUPERSTRUCTURE DECKS.											
Description of Hatchway			Nº 1 CARGO	TO F.P. STORE							
Dimensions of Hatchway			25'-8 1/2'	2'-3" x 1'-6"							
COAMINGS	{	Height above Deck ...	30"	6'							
		Thickness { Sides ...	50"	40"							
			Ends ...	44"	40"						
		Stiffeners ...	AS	✓							
		Brackets, Stays ...	APPROVED	✓							
HATCH BEAMS	{	Number ...	4								
		Spacing ...	5'-1 3/8								
		Scantling and Sketch ...	H. B. R. SECTION ✓ 10" x 6" x 40 LBS								
		Bearing Surface ...	3" ✓								
FORE AND AFTERS	{	Number ...									
		Spacing ...									
		Unsupported Lengths ...									
		Scantling* and Sketch ...	✓	✓							
		Bearing Surface ...									
HATCH COVERS	{	Material ...	PINE	STEEL							
		Thickness ...	2 1/2"	N.T.							
		How fitted ...	F & A	HINGED							
		Bearing Surface ...	3" ✓	3/8" ✓							
Spacing of Cleats			24"	✓							
Number of Tarpaulins			2	✓							
<p>*Are wood fore and afters steel shod at all bearing surfaces ? ✓</p> <p>Are battens and wedges efficient and in good condition ? YES ✓</p> <p>Are tarpaulins in good condition and in accordance with rule requirements ? YES ✓</p> <p>Are lashings provided in accordance with rule requirements ? YES.</p>											

Particulars of any special features :—

Endorsement at first survey and at surveys for renewal of Certificate :—

The fittings and appliances are in accordance with the particulars shown on this form (or as now modified) and are in good condition.



© 2020

Lloyd's Register
Foundation