

NOS 47586 STERN AND RUDDER PLAN

SCALE 1 INCH = 1 FOOT

TO BE TESTED TO THE SATISFACTION
OF LLOYDS SURVEYOR.

MATERIAL: FORGED IRON
2 OFF

AREA = 40.7 SQ. FT.

COF. = 2.01 FT. AHEAD OF PINTLES

A/D = 31.3

SPEED = 9.99 KNOTS

RIVETING IN STERN FRAME

HOLES 1 1/8" DIA. SPACED 5" APART CENTRE TO CENTRE.

RIVETING IN RUDDER FRAME

HOLES 1 1/8" DIA. SPACED 4 1/2" APART CENTRES.

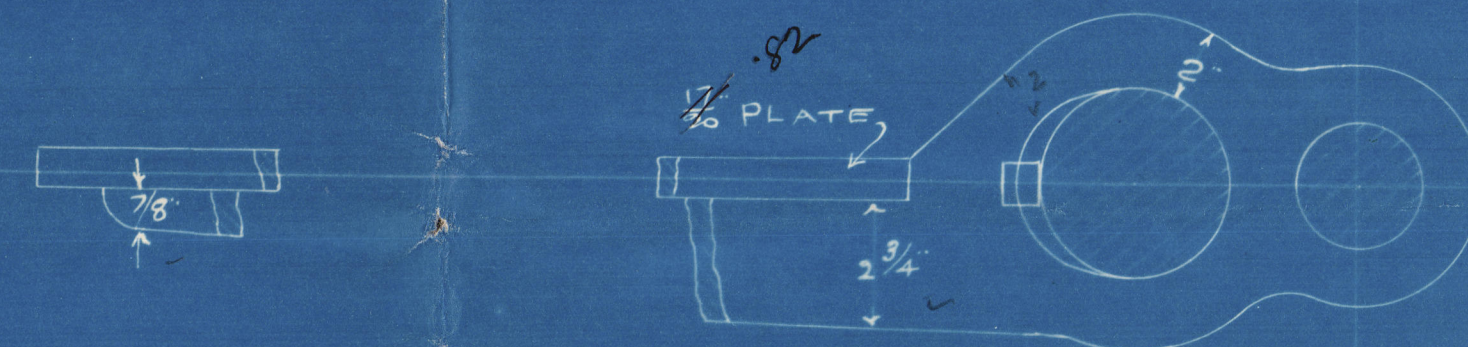
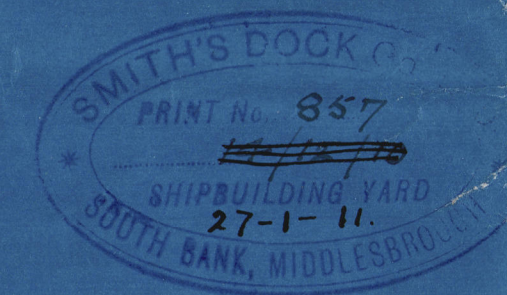
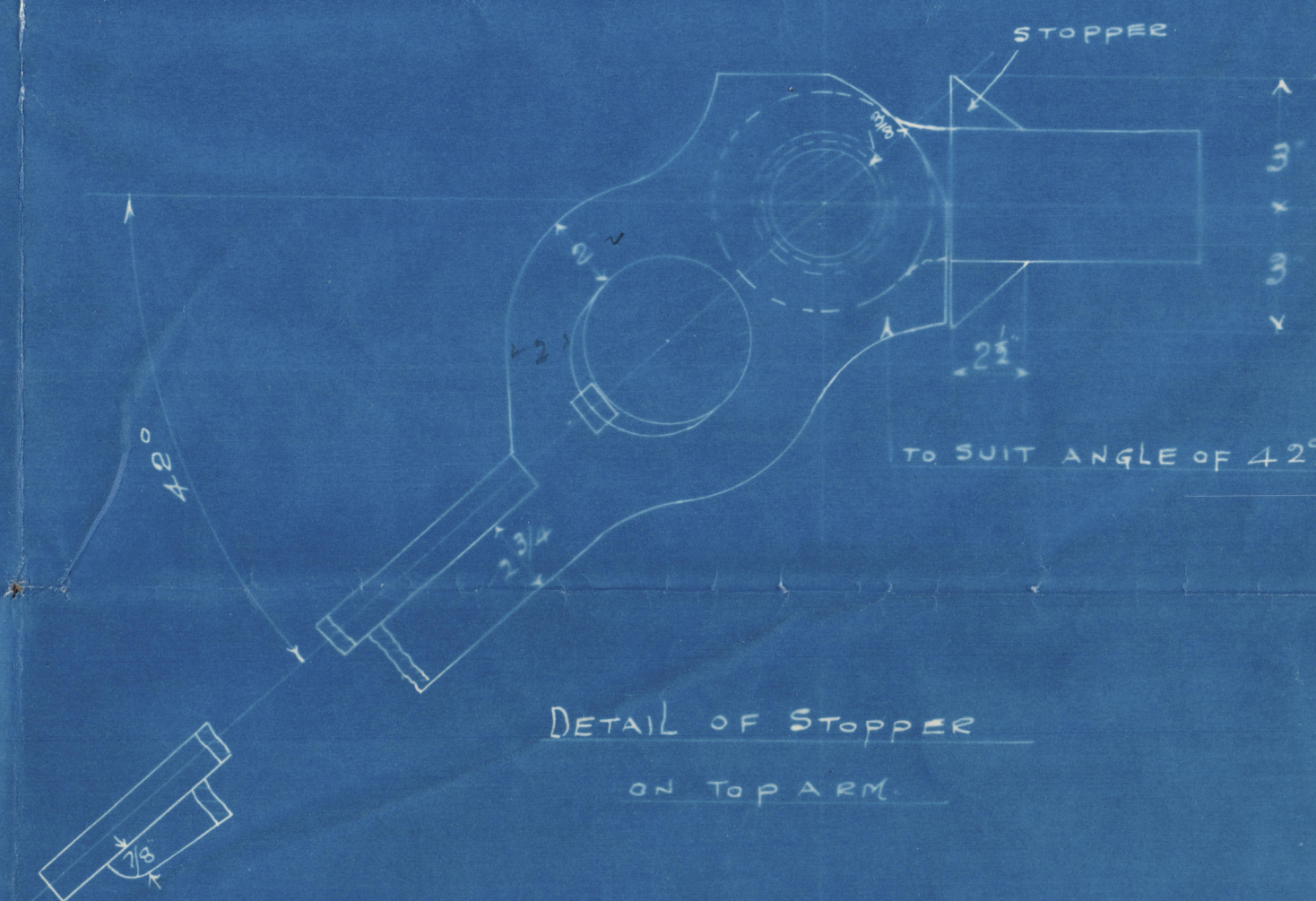
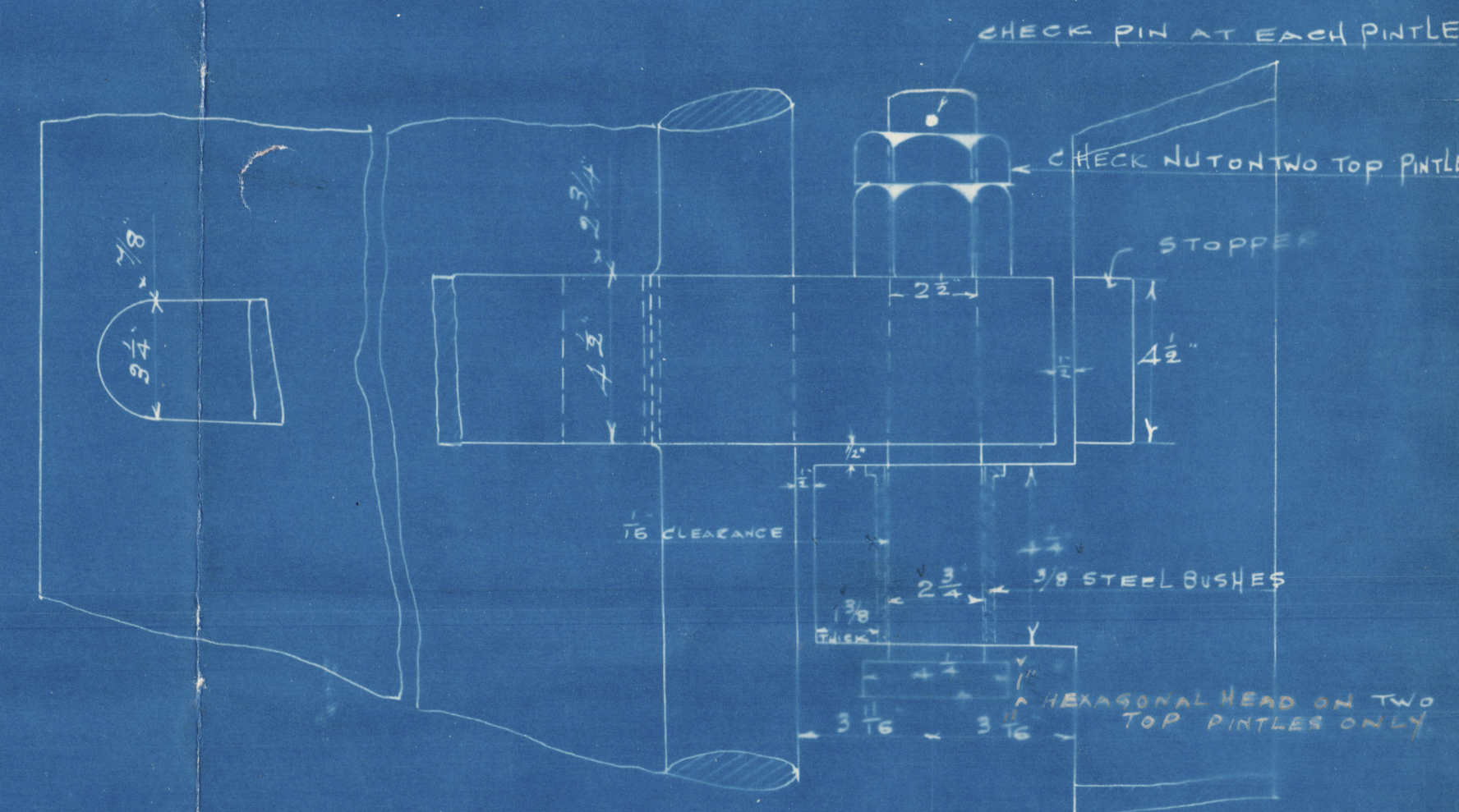
RIVETING IN SCARPH: HOLES SPACED
AS SHOWN IN SKETCH.

3/4" RIVETS 13" WHERE SHOWN FOR CONNECTING TRANSOM, & RUDDER

TRUNK, RIVETS SPACED 5" APART IN FRONT ROW, & 3 3/4" APART IN BACK ROW.

NOTE: ARMS SHRUNK, & KEYPED ON TO MAIN PIECE.

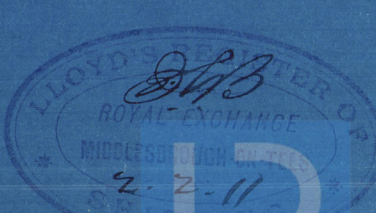
MAIN PIECE SWELLED IN WAY OF KEYS
TO LLOYDS REQUIREMENT.



DETAIL OF ARMS



DETAIL OF SCAPH



Miss Smith Dock Co.

nos 475 to 481 + 482.

570 + 571

Stem + Rudder frames

Kodama

510 - "Katauo"

511 - "Fuji"

Met. Repous 7 1/2" 7 1/2"



© 2020

Lloyd's Register
Foundation

60 6248-006257-0182