

S.S. Nos 475 & 6.

ELEVATION.

OF 2

STEEL SCREW TRAWLERS

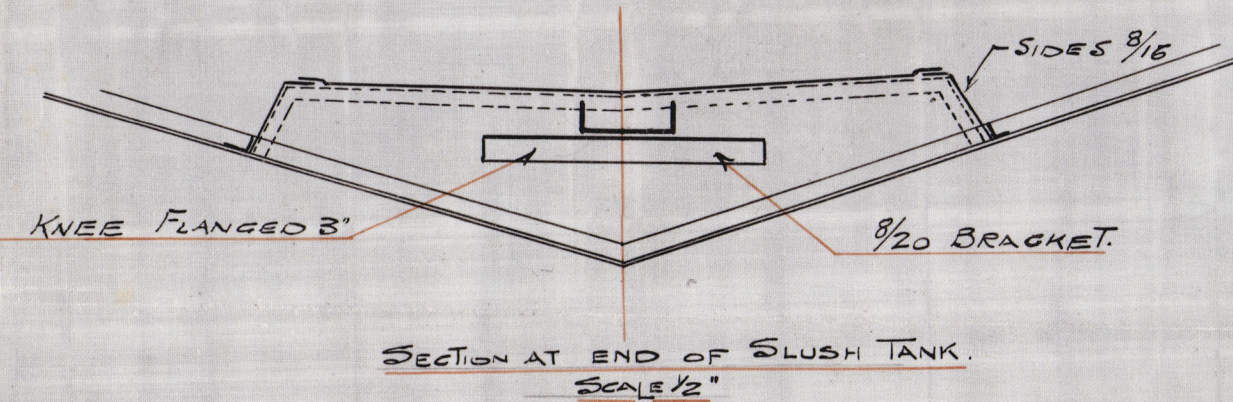
TO CLASS 100.A.I. LLOYDS

SCALE $\frac{1}{4}$ " = 1 FOOT.

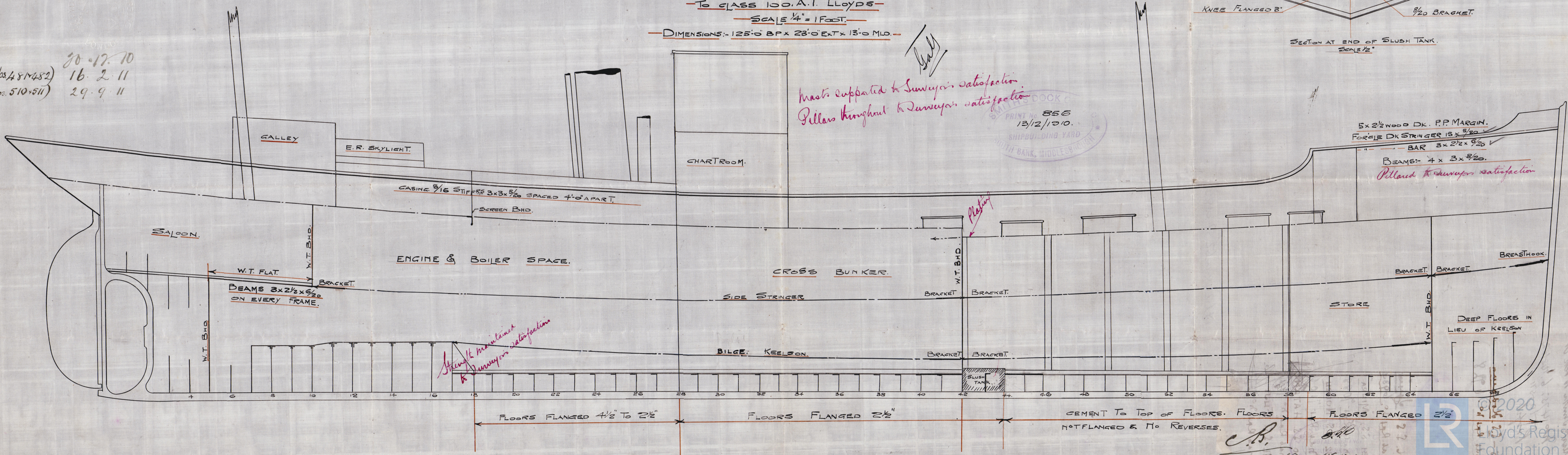
DIMENSIONS: 125'-0" BP x 23'-0" EXT x 13'-0" MLD.

Masts supported to Surveyor's satisfaction.
Pillars throughout to Surveyor's satisfaction.

SMITH'S DOCK
PRINT NO. 856
13/12/1910.
SHIPBUILDING YARD
SOUTH BANK, MIDDLESEX



(Nos. 481482) 20.12.10
(Nos. 5104511) 16.2.11
29.9.11



C.B.
20.12.10
15.12.10

© 2020
Lloyd's Register
Foundation
006248-006257-01806

Mount Smith Arch Cr

No 475; 6.7481+2

55105511

Profile

475 - S.S. Nodama

Mat. Rpt no. 6928

476. S.S. Ijima

Mat. Rpt no. 6934

481 S.S. Mihra

Mat. Rpt 7088

482 S.S. Nodzu

Mat. Rpt 7101

510 S.S. HATANO

Mat. Rpt. no 7374

511. S.S. Fuji

Mat. Rpt. no 7373

06248-06257-0180



© 2020

Lloyd's Register
Foundation