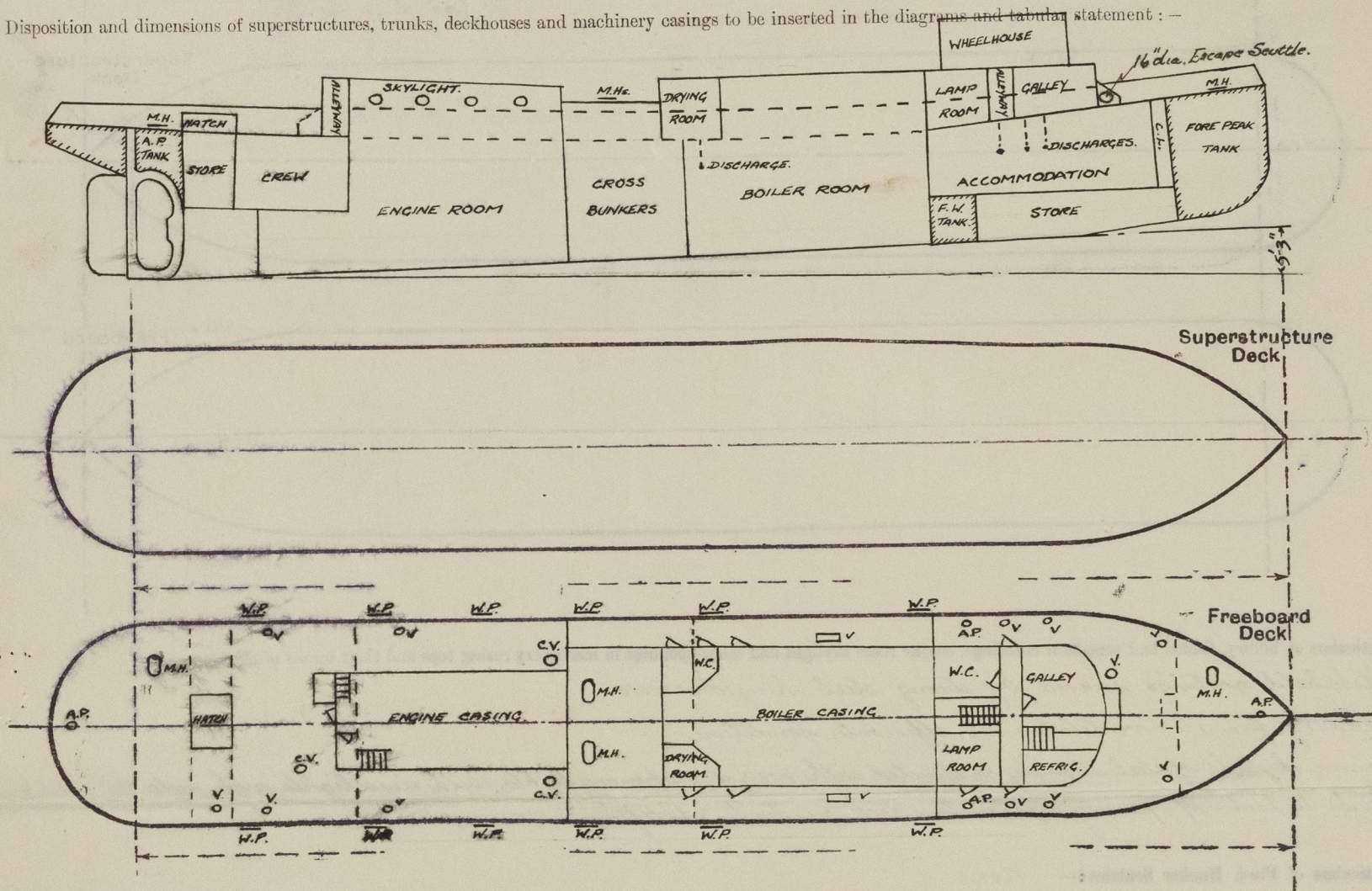


Lloyd's Register of Shipping.  
SURVEYS FOR FREEBOARD.  
(CONDITIONS OF ASSIGNMENT.)

Ship's Name "EMPIRE HARLEQUIN" Port of Survey ABERDEEN  
Official Number 165264 ✓ Surveyor's Signature Jas. Stevenson  
Nationality and Port of Registry BRITISH. Aberdeen Date of Survey WHILST BUILDING.

Disposition and dimensions of superstructures, trunks, deckhouses and machinery casings to be inserted in the diagrams and tabular statement:—



Particulars of Superstructures, Trunks, Casings, Deckhouses.

	Coaming	Plating	Stiffeners	Spacing	End Attachments of Stiffeners	Size of Openings	Height of Sills	Height of Casings
Poop Bulkhead ... ..								
Raised Quarter Deck Bulkhead ...								
Bridge, After Bulkhead ... ..								
Bridge, Forward Bulkhead ... ..								
Forecastle Bulkhead ... ..								
Trunk, Aft ... ..								
Trunk, Forward ... ..								
Exposed Machinery Casings on Freeboard or Raised Quarter Deck ...	E.C. 30"	✓	3" x 2½" x 30"	ABOUT 36"	✓	COMP 2'-11" x 1'-10"	2'-0"	5'-6" to 5'-0"
Exposed Machinery Casings on Superstructure Decks ... ..	B.C. 30"	26"	"	30"	BRACKETS TOP	4'-1½" x 1'-10"	2'-0"	7'-6" MEAN.
Machinery Casings within Superstructures not fitted with Class I Closing Appliances ... ..								
Deckhouses on Flush Deck Ships ...	26"	26"	3" x 2½" x 30"	ABOUT 30"	BRACKETS TOP	4'-0" x 1'-10"	2'-0"	7'-0" MEAN.

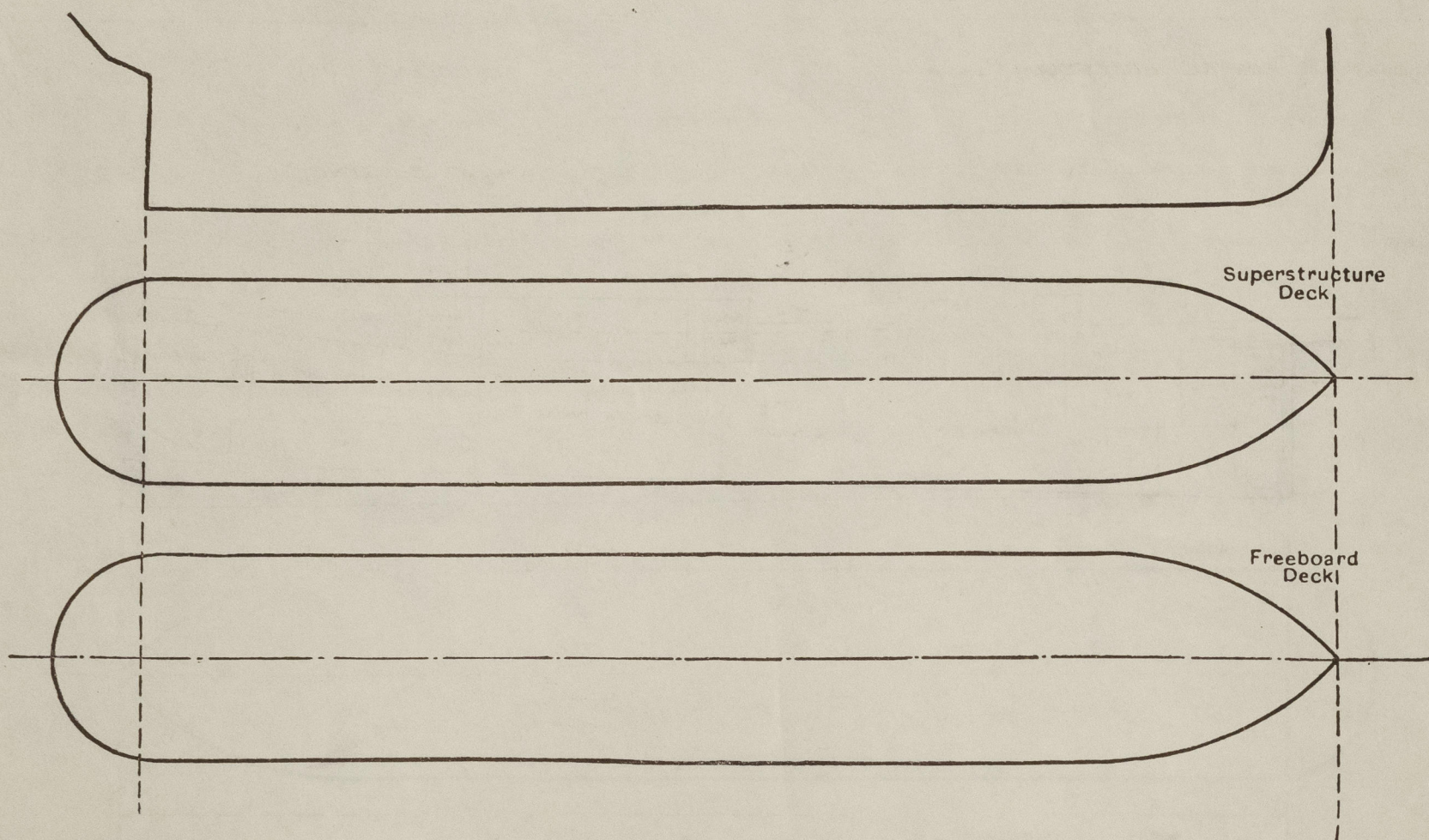
Particulars of Closing Appliances (state if capable of being manipulated from both sides).

Poop Bulkhead ... ..	
Raised Quarter Deck Bulkhead ...	
Bridge, After Bulkhead ... ..	
Bridge, Forward Bulkhead ... ..	
Forecastle Bulkhead ... ..	E.CASING. STEEL DOOR, MANIPULATED BOTH SIDES. ✓
Exposed Machinery Casings on Freeboard or Raised Quarter Deck ...	B.CASING. STEEL DOORS. " " " ✓
Exposed Machinery Casings on Superstructure Decks ... ..	
Machinery Casings within Superstructures not fitted with Class I Closing Appliances ... ..	
Deckhouses on Flush Deck Ships ...	STEEL DOOR P+S. MANIPULATED BOTH SIDES. ✓



# PARTICULARS OF PROTECTION TO OPENINGS, ETC.

The following diagrams should be used to indicate the positions of cargo and coaling hatchways, gangway, cargo and coaling ports, ventilators, companionways, etc., which would affect the seaworthiness of the ship:—



Particulars of fiddle, funnel and ventilator coamings, engine room skylight and other openings in machinery casing tops and their means of closing:—

Stokehold gratings covered by strong steel hinged covers. ✓  
 Fiddle, funnel & ventilators in efficient condition. ✓  
 Engine skylight of steel strongly constructed with 4-12" dia. opening lights with deadlights each side. ✓  
 Height to centre of opening lights above deck 3'-0" Fore, 3'-6" Aft. ✓

Particulars of Flush Bunker Scuttles:— None ✓

Particulars of Companionways:— After end of Engine Room skylight. Entrance to bunks accommodation. ✓

Opening 2'-11" x 1'-10", Sill 2'-0". Steel door. ✓

Entrance to Accommodation Fore Opening 4'-0" x 1'-10". Sill 2'-0". Steel door P. & S. ✓

Particulars of Ventilators in exposed positions on freeboard and superstructure decks:—

2 C.I. gooseneck vents 5" dia, 2'-0" high to crew space Aft, 2 to Engine Room, 6 to Accommodation Fore. ✓

1 C.I. gooseneck vent 3" dia. 2'-½" high to stove room Aft. ✓

1-6" dia. cowl vent to crew space Aft. boaming 30". 2'-6" high. ✓

1-12" dia. cowl vents (P. & S.) to Engine Room. boaming 30". 3'-0" high. ✓

1-15" x 6½" Exhaust vents (P. & S.) from Boiler Room. boaming 30". 3'-0" high. ✓

1-6" dia. French type vent, intake to Fore Accommodation Fan. boaming 30". 3'-6" high through gun platform. ✓

Wood plugs & canvas covers supplied to all vents. ✓

Particulars of Air Pipes in exposed positions on freeboard, raised quarter, or superstructure decks:—

1 to Fore Peak, 3" dia. C.I. gooseneck 2'-½" above deck. canvas cover fitted. ✓

1 " Aft " 3" " " 2'-½" " " " " " " " " ✓

2 to Oil Fuel Tanks, 5" " " 2'-0" above tank top. gauge wire fitted. ✓

2 to Feed Water Tanks, 4" dia. M.S. " 2'-5" " deck. canvas cover fitted. ✓

Particulars of Gangway Cargo and Coaling Ports:— None

Particulars of Scuppers and Sanitary Discharge Pipes:—

Six 2" dia. elbow scuppers cut through sheer strake P. & S. ✓

One sanitary discharge (galley sink) Port side Fore 2" dia. fitted with storm valve, cut 2'-0" below Freeboard Deck. ✓

" " " Officer's washbasin, Port " 2" " " " " " 1'-6" " " " ✓

" " " from deck house Fore on Port side, 4" " " " " " 2'-0" " " " ✓

" " " amidships on Port side, 4" " " " " " 2'-6" " " " ✓

Particulars of Side Scuttles:— None ✓

Vertical distance of Sill of lowest Side Scuttle above top of keel ✓

Particulars of Guard Rails:—

Steel bulwarks. All Fore & Aft on Freeboard Deck. 3'-0" high raised to 3'-3" at Stem. ✓

Efficiently constructed & supported. ✓

Particulars of Gangways, Lifelines, etc.:—

Storm rails fitted round casings & deck houses. ✓

## Particulars of Freeing Arrangements.

	Length of Bulwark	Height of Bulwark	Size of Freeing Ports	Number each side	Area each side	Rule area each side
After Well ... ..	105'-0"	3'-0"	2'-0" x 1'-0"	6	12.0 #	✓
All Fore & Aft.						
Forward Well ... ..						

State position of each freeing port ... .. After Well:— Fore of A.P. 9'-0", 20'-0", 30'-0", 40'-0", 51'-0", 72'-0".

(F. and A. position and height above deck edge) Forward Well:— ½" above deck edges.

State whether the freeing ports are fitted with shutters, bars, or rails, and give particulars of such:— Hinged plate shutters with one rod.

Additional area where sheer is less than standard.



## PARTICULARS OF PROTECTION TO OPENINGS, ETC.

HATCHWAYS ON FREEBOARD AND SUPERSTRUCTURE DECKS.									
Description of Hatchway	...	...	...	...	...	...	...	...	...
Dimensions of Hatchway	...	...	...	...	...	...	...	...	...
COAMINGS	Height above Deck	...	2'-0"						
	Thickness	Sides	...	26"					
	Stiffeners	Ends	...	✓					
	Brackets, Stays	...	...	✓					
HATCH BEAMS	Number	...	...	None					
	Spacing	...	...	None					
	Scantling and Sketch	...	...	None					
	Bearing Surface	...	...	None					
FORE AND AFTERS	Number	...	...	None					
	Spacing	...	...	None					
	Unsupported Lengths	...	...	None					
	Scantling* and Sketch	...	...	None					
	Bearing Surface	...	...	None					
HATCH COVERS	Material	...	...	W.P.					
	Thickness	...	...	2 1/2"					
	How fitted (method)	...	...	Stewardships					
	Bearing Surface	...	...	2 1/2"					
Spacing of Cleats	...	...	...	2'-0"					
Number of Tarpaulins	...	...	...	2					
<p>*Are wood fore and afters steel shod at all bearing surfaces? ✓</p> <p>Are battens and wedges efficient and in good condition? ✓</p> <p>Are tarpaulins in good condition and in accordance with rule requirements? ✓</p> <p>Are lashings provided in accordance with rule requirements? ✓</p>									

Particulars of any special features:— These particulars obtained whilst the vessel is building

First Entry report will follow on completion. ✓

The particulars given herewith are relating to items not yet fitted, are as proposed and completion of same will be advised with Verification Form.

Particulars of Displacement etc, as received from the Builders.

Mean Draught	External Displ.	Tons per Inch.
10'-8"	491 Tons S.W.	5.72
11'-0"	556 " "	5.96
12'-0"	621 " "	6.21

Copies of Midship Section & Profile are enclosed for reference. ✓

Endorsement at first survey and at surveys for renewal of Certificate:—

The fittings and appliances are in accordance with the particulars shown on this form (or as now modified) and are in good condition.



© 2020

Lloyd's Register  
Foundation