

# N<sup>o</sup>504. PLAN OF FORGINGS

SCALE 1" = 1 FOOT.

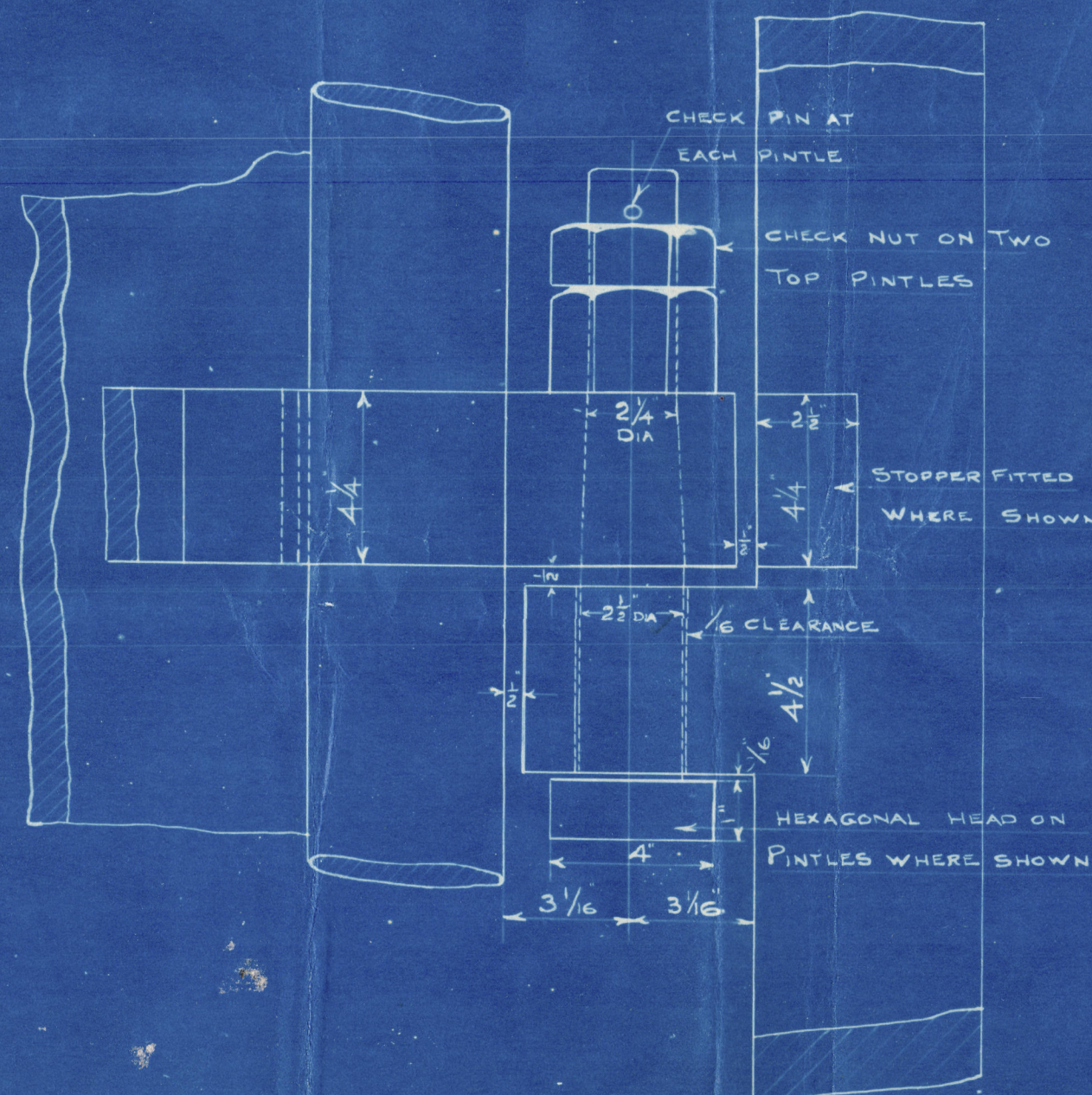
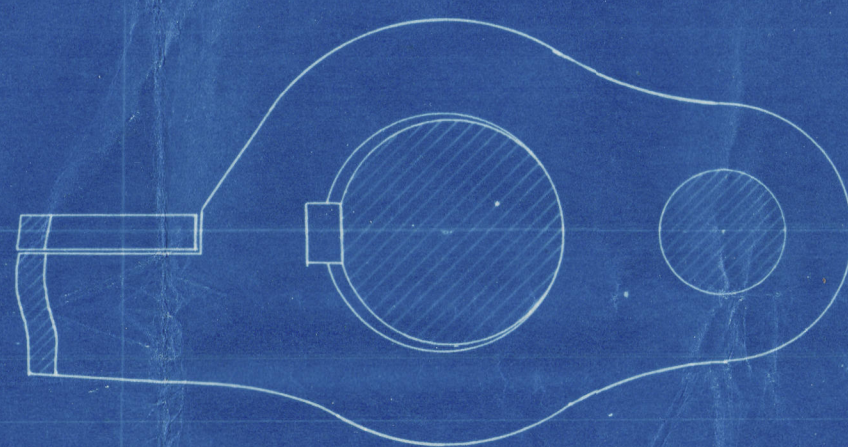
DETAILS 3" = 1 FOOT.

TO BE TESTED TO THE SATISFACTION OF  
LLOYD'S SURVEYOR

NOTE:- ARMS SHRUNK & KEYED ON TO MAIN PIECE  
MAIN PIECE BEING INCREASED IN DIA<sup>n</sup> IN WAY OF EACH ARM  
TO ADMIT OF AN EFFICIENT KEY-WAY BEING CUT (TO SURVEYOR'S SATISFACTION)

A x D = 72.72

SPEED:- UNDER 10 KNOTS.



DETAIL OF PINTLES STOPPER ETC.

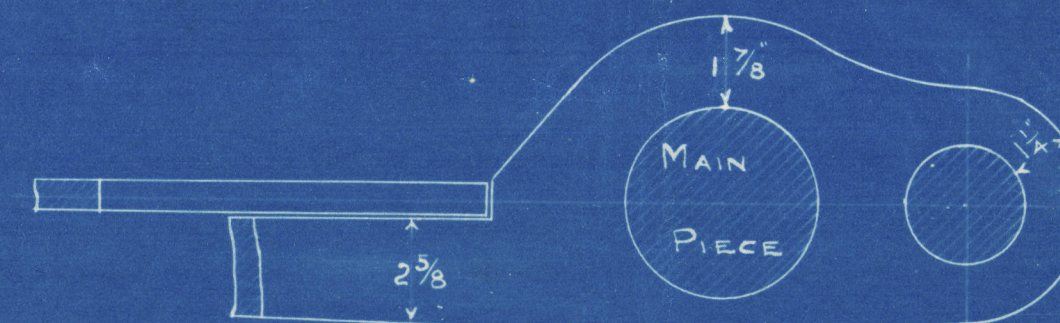
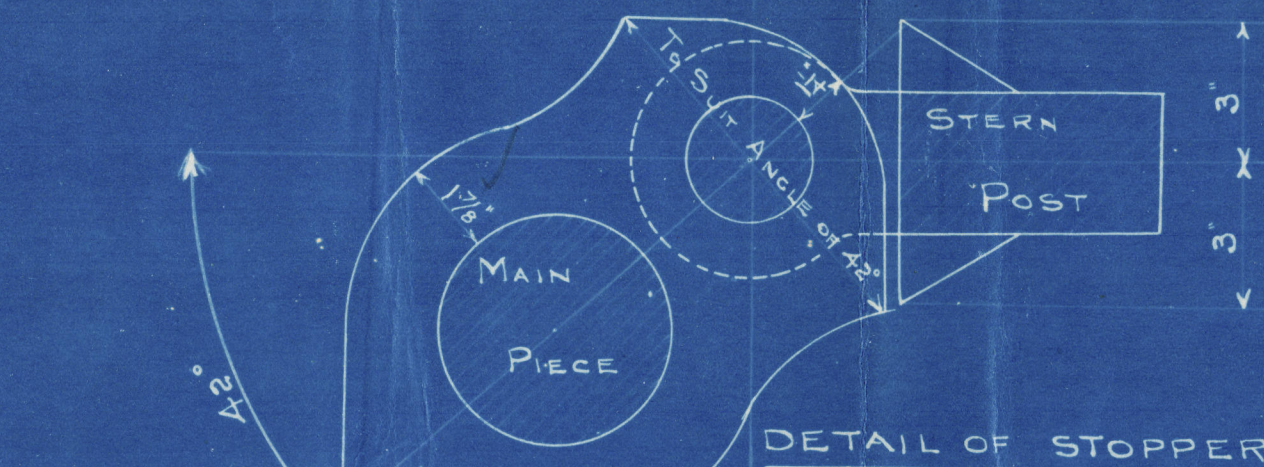
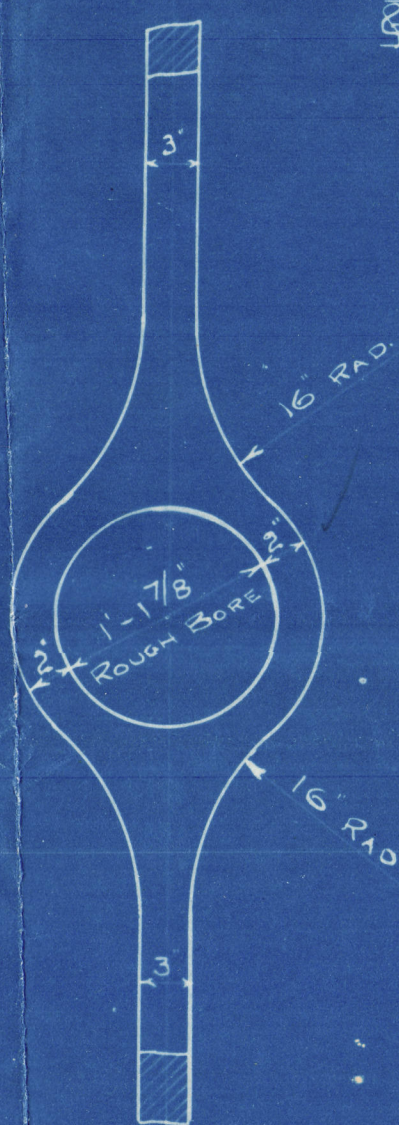
## RIVETING

RIVETING IN STERN FRAME:- HOLES 1/16" DIA SPACED 5" APART CENTRE TO CENTRE

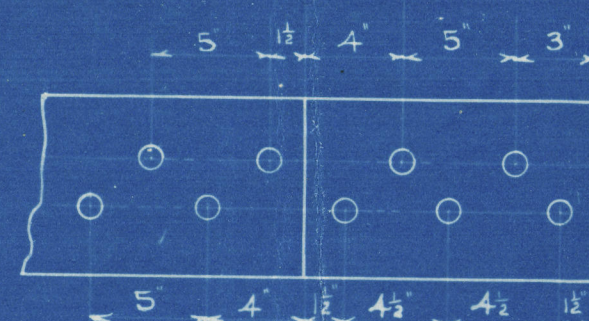
RIVETING IN RUDDER FRAME:- HOLES 1/16" DIA SPACED 4 1/2" APART CR TO CR

HOLES TO BE COUNTERSUNK IN RUDDER FRAME ONLY (ON OUTSIDE OF ARMS)

3/4" RIVETS HOLES 13/16" IN STERN POST WHERE SHOWN FOR CONNECTING  
TRANSOM & RUDDER TRUNK RIVETS SPACED 5" APART IN THE FORWARD ROW  
& 3 3/4" APART CR TO CR ON AFTER ROW.



DETAIL OF ARM.



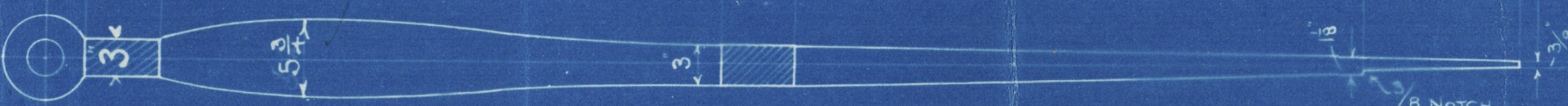
DETAIL OF SCARP.

TOTAL LENGTH OF RUDDER FRAME 19'-6 3/4"

TOTAL LENGTH OF STERN FRAME 18'-4"

RUDDER PLATE .80"

(Double plate)  
(ready fitted)  
4 1/2 inches  
(for plate on trunk)  
(R.D.)



Lloyd's Register of Shipping  
Foundations



Smiths Dock Co

Stern frame. <sup>unfilled</sup> Rudder

No. 504

S. S. Victoria

Drawn Lps. 20/1/14



This rudder was not  
fitted in ship.  
Similar plain rudder  
fitted. (See plan of same  
as above).



© 2021

Lloyd's Register  
Foundation