

16.1.08

PROPOSED SINGLE-PLATE RUDDER

FORGED IRON.

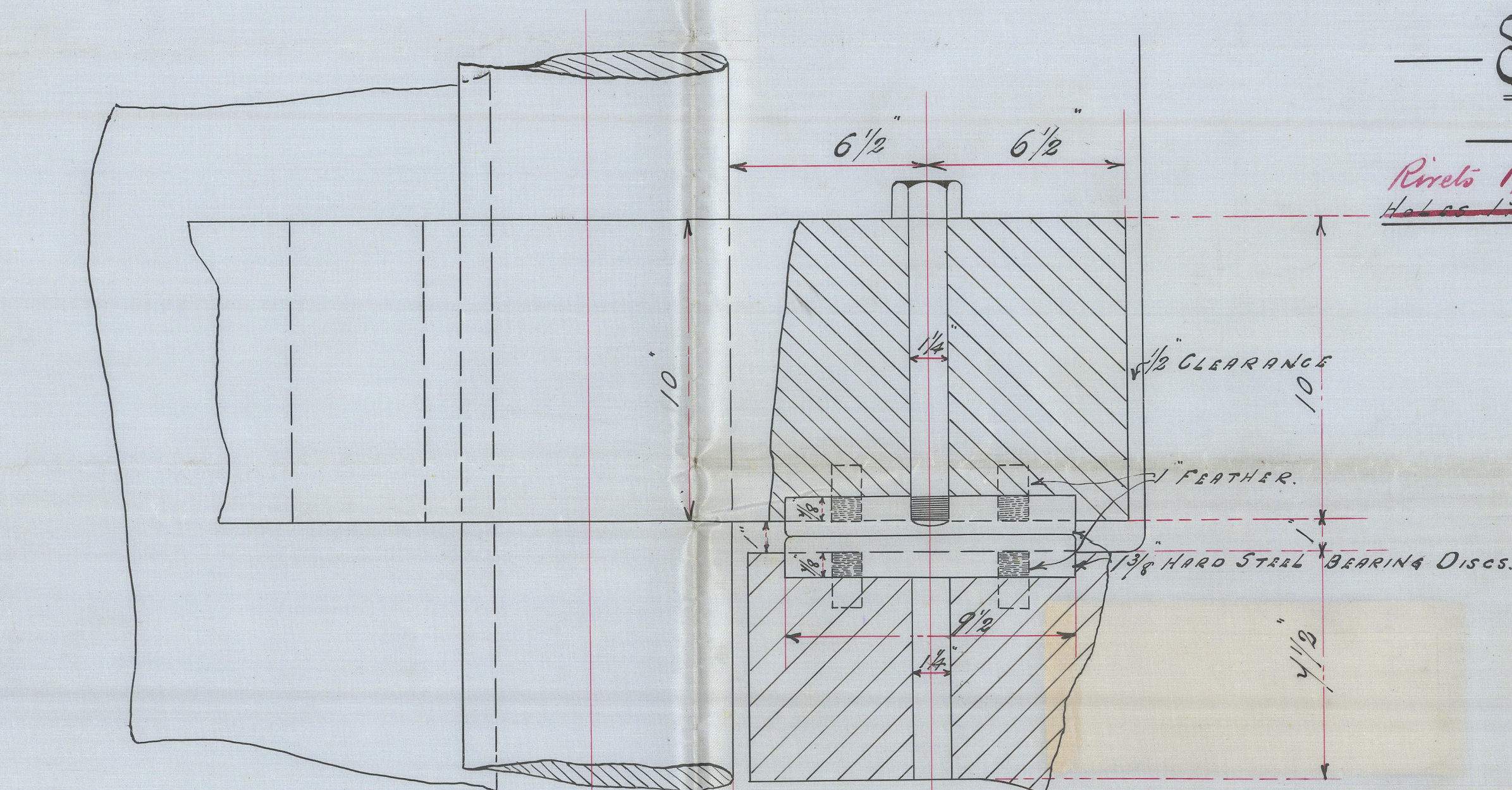
S.S. No 142

SCALE 1/2" = 1 FT.

Rivets 1 1/4" DIA. SPACED 4 1/2" DIAM. AND COUNTERSUNK ON OUTSIDE

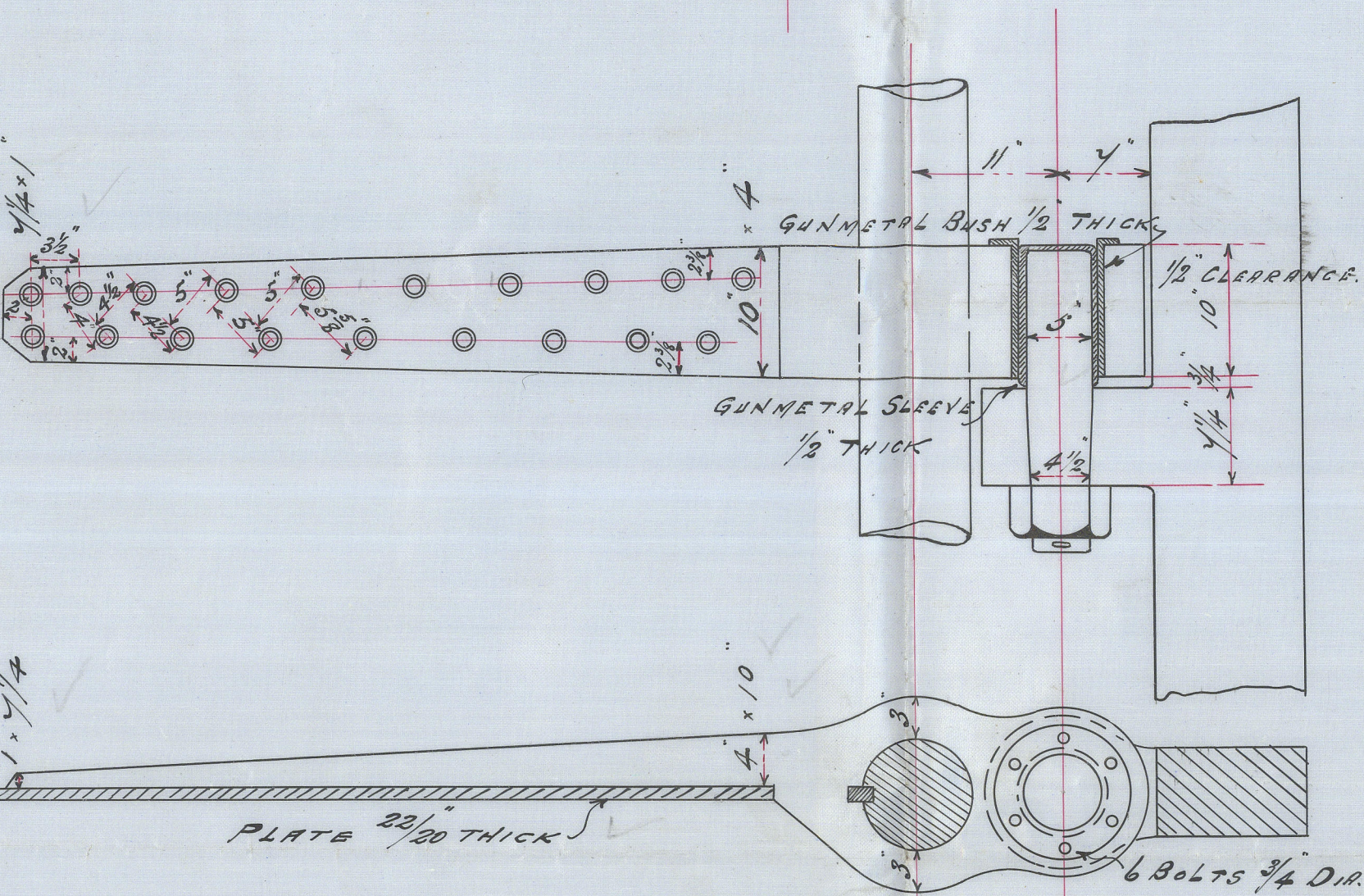
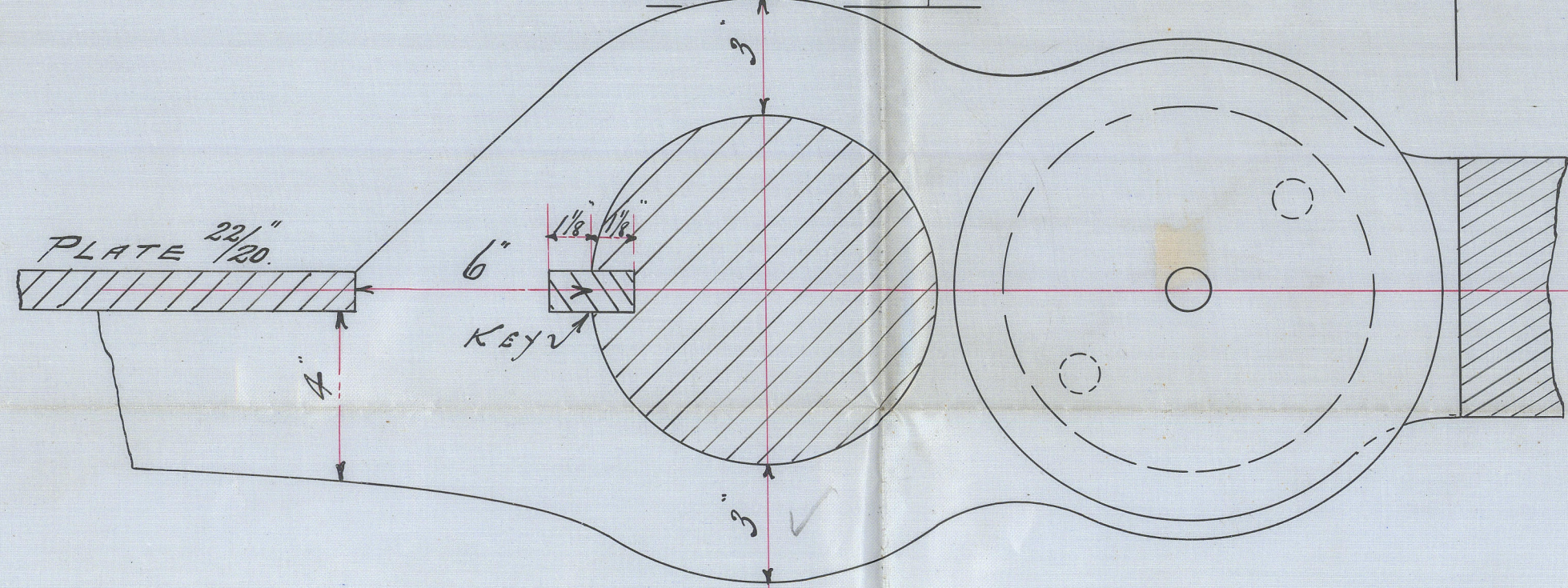
PLATING No

Speed of vessel 9 1/2 knots

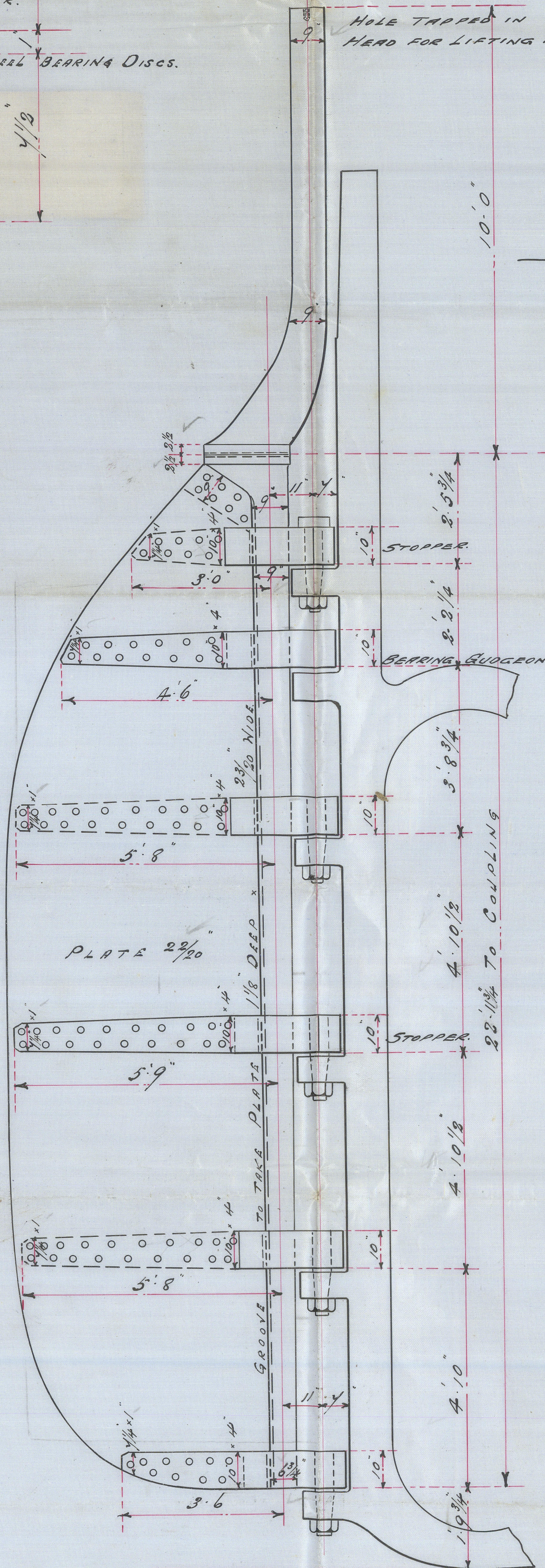
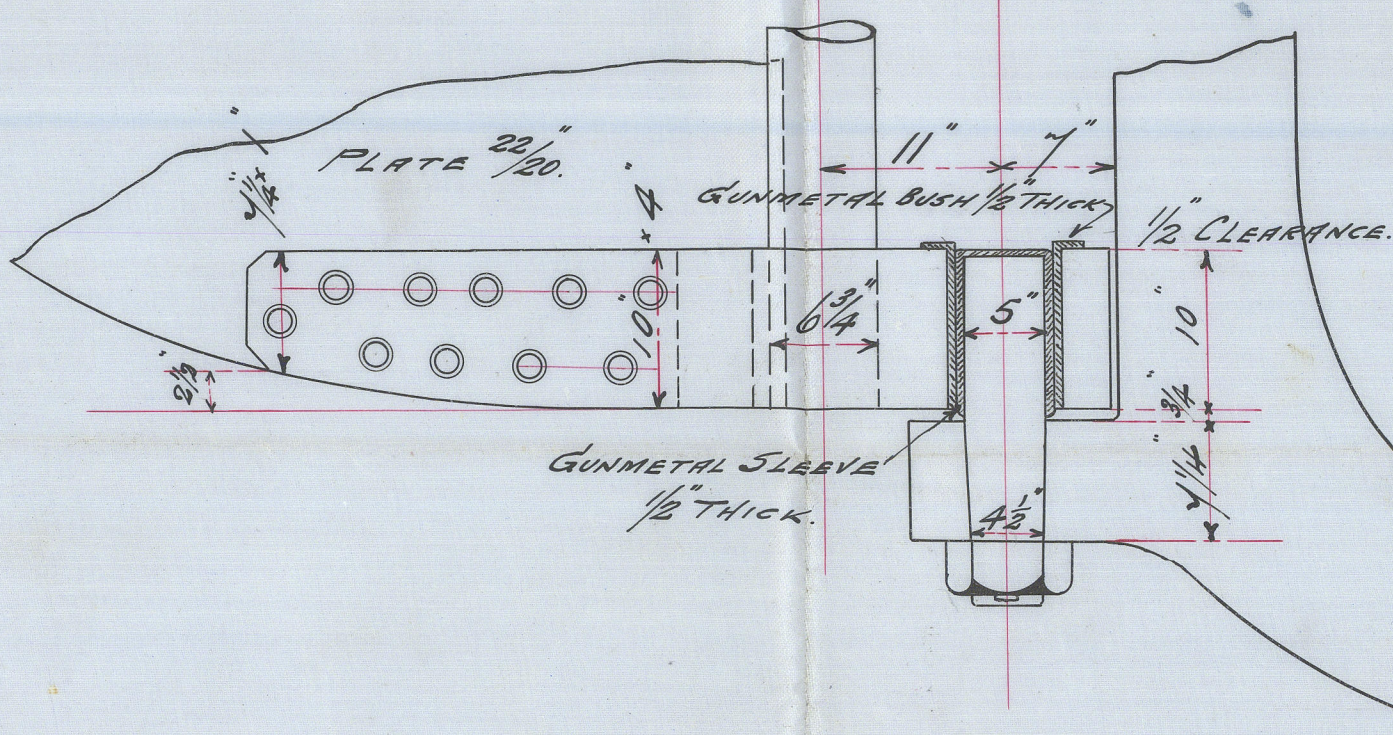


SKETCH OF BEARING GUDGEON

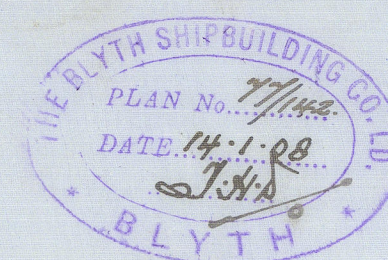
SCALE 3" = 1 FT.



6 BOLTS 3/4" DIA.



COUPLING
6 BOLTS 2 1/2" DIA.



BLYTH SHIPBUILDING CO., LTD., BLYTH.

ENCLOSURE
FOR

Lloyds.

2/2

Blyth S.S. N^o 142
Newcastle-on-Tyne
Redder Plan

15-1-08

G. A. D. J.

at
1/2
part of
1/2

SECTION OF THE COASTLINE OF NEWCASTLE

16.1.08

Grange Padua

S.S. WERRIBEE

Newcastle Report

No. 55991



© 2021

Lloyd's Register
Foundation