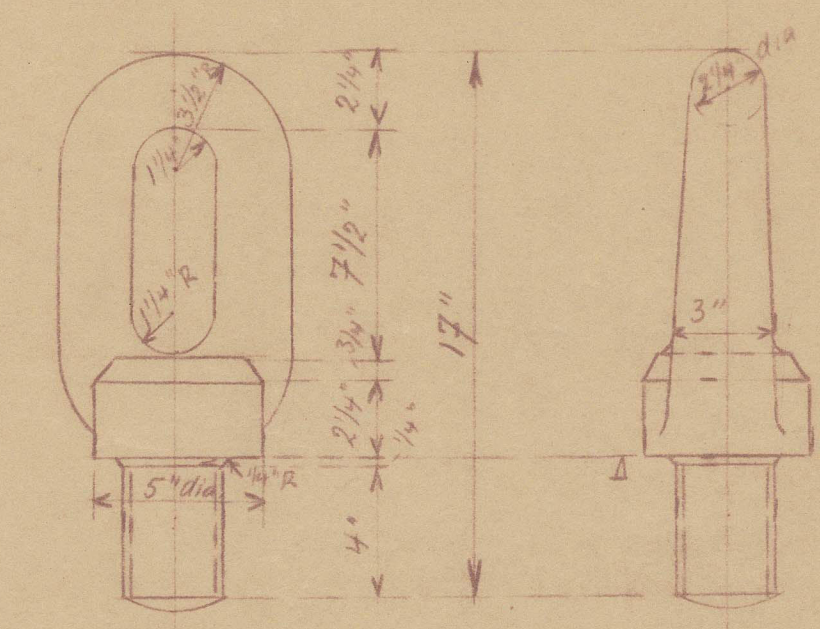


23/1/34
S. 12.35 - No. 169
Eye-bolt for lifting rudder
and rudder head
9" x 1"



Elevation of backpost
Scale 1" = 1'

Draught 27'-5 1/4"

Steering gear

Rudder bearing
cons. as guide-bearing
and stuffing-box
(Pulitzer-Patent
or similar)

Upper deck

*AP = Fr. 0.

only midships.

Rudderhead frame
Owner's requirements

Store deck

Recess midships

Transomplate 9 1/2"

Painting opening
as large as necessary

Guide-body

22 1/2" dia. base

9 1/2" brass lining
8 1/2" to 10 1/2" to 4 1/2" to
off to be well struck on

Notes:
The upper bearing requires
is to be struck on
to the rudderhead
coupling, after being
checked in properly
fixed in place.

5 1/2" brass lining
off to be well struck on

Back-out 5 1/4" thread
7 1/2" split pin

Base-line

*AP = Fr. 0

Frame spacing 2'-0"

All edges
3/4" radius

Base-line

*AP = Fr. 0

Frame spacing 2'-0"

All edges
3/4" radius

Base-line

*AP = Fr. 0

Frame spacing 2'-0"

All edges
3/4" radius

Base-line

Section J-K
Scale 1" = 1'

8-23/4" fitted bolts
split pins 3/4" dia.

The casting to be welded
all around to the rudder-body

To be filled in
flush with cement

1" rivets - 4" dia.
where necessary
1 1/2" rivets - 5" dia.

Frame 1
Scale 1" = 1'

1 1/2" Rivets
Spacing 3'-0"

1 1/2" Rivets
Spacing 3'-0"

1 1/2" Rivets
Spacing 3'-0"

1 1/2" Rivets
Spacing 3'-0"

1 1/2" Rivets
Spacing 3'-0"

1 1/2" Rivets
Spacing 3'-0"

1 1/2" Rivets
Spacing 3'-0"

1 1/2" Rivets
Spacing 3'-0"

1 1/2" Rivets
Spacing 3'-0"

1 1/2" Rivets
Spacing 3'-0"

1 1/2" Rivets
Spacing 3'-0"

1 1/2" Rivets
Spacing 3'-0"

1 1/2" Rivets
Spacing 3'-0"

1 1/2" Rivets
Spacing 3'-0"

1 1/2" Rivets
Spacing 3'-0"

1 1/2" Rivets
Spacing 3'-0"

1 1/2" Rivets
Spacing 3'-0"

1 1/2" Rivets
Spacing 3'-0"

1 1/2" Rivets
Spacing 3'-0"

1 1/2" Rivets
Spacing 3'-0"

1 1/2" Rivets
Spacing 3'-0"

1 1/2" Rivets
Spacing 3'-0"

1 1/2" Rivets
Spacing 3'-0"

1 1/2" Rivets
Spacing 3'-0"

1 1/2" Rivets
Spacing 3'-0"

Section L-M
Scale 1" = 1'

8-23/4" fitted bolts
split pins 3/4" dia.

The casting to be welded
all around to the rudder-body

To be filled in
flush with cement

1" rivets - 4" dia.
where necessary
1 1/2" rivets - 5" dia.

Frame 1
Scale 1" = 1'

1 1/2" Rivets
Spacing 3'-0"

1 1/2" Rivets
Spacing 3'-0"

1 1/2" Rivets
Spacing 3'-0"

1 1/2" Rivets
Spacing 3'-0"

1 1/2" Rivets
Spacing 3'-0"

1 1/2" Rivets
Spacing 3'-0"

1 1/2" Rivets
Spacing 3'-0"

1 1/2" Rivets
Spacing 3'-0"

1 1/2" Rivets
Spacing 3'-0"

1 1/2" Rivets
Spacing 3'-0"

1 1/2" Rivets
Spacing 3'-0"

1 1/2" Rivets
Spacing 3'-0"

1 1/2" Rivets
Spacing 3'-0"

1 1/2" Rivets
Spacing 3'-0"

1 1/2" Rivets
Spacing 3'-0"

1 1/2" Rivets
Spacing 3'-0"

1 1/2" Rivets
Spacing 3'-0"

1 1/2" Rivets
Spacing 3'-0"

1 1/2" Rivets
Spacing 3'-0"

1 1/2" Rivets
Spacing 3'-0"

1 1/2" Rivets
Spacing 3'-0"

1 1/2" Rivets
Spacing 3'-0"

1 1/2" Rivets
Spacing 3'-0"

1 1/2" Rivets
Spacing 3'-0"

1 1/2" Rivets
Spacing 3'-0"

Section N-O
Scale 1" = 1'

8-23/4" fitted bolts
split pins 3/4" dia.

The casting to be welded
all around to the rudder-body

To be filled in
flush with cement

1" rivets - 4" dia.
where necessary
1 1/2" rivets - 5" dia.

Frame 1
Scale 1" = 1'

1 1/2" Rivets
Spacing 3'-0"

1 1/2" Rivets
Spacing 3'-0"

1 1/2" Rivets
Spacing 3'-0"

1 1/2" Rivets
Spacing 3'-0"

1 1/2" Rivets
Spacing 3'-0"

1 1/2" Rivets
Spacing 3'-0"

1 1/2" Rivets
Spacing 3'-0"

1 1/2" Rivets
Spacing 3'-0"

1 1/2" Rivets
Spacing 3'-0"

1 1/2" Rivets
Spacing 3'-0"

1 1/2" Rivets
Spacing 3'-0"

1 1/2" Rivets
Spacing 3'-0"

1 1/2" Rivets
Spacing 3'-0"

1 1/2" Rivets
Spacing 3'-0"

1 1/2" Rivets
Spacing 3'-0"

1 1/2" Rivets
Spacing 3'-0"

1 1/2" Rivets
Spacing 3'-0"

1 1/2" Rivets
Spacing 3'-0"

1 1/2" Rivets
Spacing 3'-0"

1 1/2" Rivets
Spacing 3'-0"

1 1/2" Rivets
Spacing 3'-0"

1 1/2" Rivets
Spacing 3'-0"

1 1/2" Rivets
Spacing 3'-0"

1 1/2" Rivets
Spacing 3'-0"

1 1/2" Rivets
Spacing 3'-0"

Section P-Q
Scale 1" = 1'

8-23/4" fitted bolts
split pins 3/4" dia.

The casting to be welded
all around to the rudder-body

To be filled in
flush with cement

1" rivets - 4" dia.
where necessary
1 1/2" rivets - 5" dia.

Frame 1
Scale 1" = 1'

1 1/2" Rivets
Spacing 3'-0"

1 1/2" Rivets
Spacing 3'-0"

1 1/2" Rivets
Spacing 3'-0"

1 1/2" Rivets
Spacing 3'-0"

1 1/2" Rivets
Spacing 3'-0"

1 1/2" Rivets
Spacing 3'-0"

1 1/2" Rivets
Spacing 3'-0"

1 1/2" Rivets
Spacing 3'-0"

1 1/2" Rivets
Spacing 3'-0"

1 1/2" Rivets
Spacing 3'-0"

1 1/2" Rivets
Spacing 3'-0"

1 1/2" Rivets
Spacing 3'-0"

1 1/2" Rivets
Spacing 3'-0"

1 1/2" Rivets
Spacing 3'-0"

1 1/2" Rivets
Spacing 3'-0"

1 1/2" Rivets
Spacing 3'-0"

1 1/2" Rivets
Spacing 3'-0"

1 1/2" Rivets
Spacing 3'-0"

1 1/2" Rivets
Spacing 3'-0"

1 1/2" Rivets
Spacing 3'-0"

1 1/2" Rivets
Spacing 3'-0"

1 1/2" Rivets
Spacing 3'-0"

1 1/2" Rivets
Spacing 3'-0"

1 1/2" Rivets
Spacing 3'-0"

1 1/2" Rivets
Spacing 3'-0"

Section R-S
Scale 1" = 1'

8-23/4" fitted bolts
split pins 3/4" dia.

The casting to be welded
all around to the rudder-body

To be filled in
flush with cement

1" rivets - 4" dia.
where necessary
1 1/2" rivets - 5" dia.

Frame 1
Scale 1" = 1'

1 1/2" Rivets
Spacing 3'-0"

1 1/2" Rivets
Spacing 3'-0"

1 1/2" Rivets
Spacing 3'-0"

1 1/2" Rivets
Spacing 3'-0"

1 1/2" Rivets
Spacing 3'-0"

1 1/2" Rivets
Spacing 3'-0"

1 1/2" Rivets
Spacing 3'-0"

1 1/2" Rivets
Spacing 3'-0"

1 1/2" Rivets
Spacing 3'-0"

1 1/2" Rivets
Spacing 3'-0"

1 1/2" Rivets
Spacing 3'-0"

1 1/2" Rivets
Spacing 3'-0"

1 1/2" Rivets
Spacing 3'-0"

1 1/2" Rivets
Spacing 3'-0"

1 1/2" Rivets
Spacing 3'-0"

1 1/2" Rivets
Spacing 3'-0"

1 1/2" Rivets
Spacing 3'-0"

1 1/2" Rivets
Spacing 3'-0"

1 1/2" Rivets
Spacing 3'-0"

1 1/2" Rivets
Spacing 3'-0"

1 1/2" Rivets
Spacing 3'-0"

1 1/2" Rivets
Spacing 3'-0"

1 1/2" Rivets
Spacing 3'-0"

1 1/2" Rivets
Spacing 3'-0"

1 1/2" Rivets
Spacing 3'-0"

Section T-U
Scale 1" = 1'

8-23/4" fitted bolts
split pins 3/4" dia.

The casting to be welded
all around to the rudder-body

To be filled in
flush with cement

1" rivets - 4" dia.
where necessary
1 1/2" rivets - 5" dia.

Frame 1
Scale 1" = 1'

1 1/2" Rivets
Spacing 3'-0"

1 1/2" Rivets
Spacing 3'-0"

1 1/2" Rivets
Spacing 3'-0"

1 1/2" Rivets
Spacing 3'-0"

1 1/2" Rivets
Spacing 3'-0"

1 1/2" Rivets
Spacing 3'-0"

1 1/2" Rivets
Spacing 3'-0"

1 1/2" Rivets
Spacing 3'-0"

1 1/2" Rivets
Spacing 3'-0"

1 1/2" Rivets
Spacing 3'-0"

1 1/2" Rivets
Spacing 3'-0"

1 1/2" Rivets
Spacing 3'-0"

1 1/2" Rivets
Spacing 3'-0"

1 1/2" Rivets
Spacing 3'-0"

1 1/2" Rivets
Spacing 3'-0"

1 1/2" Rivets
Spacing 3'-0"

1 1/2" Rivets
Spacing 3'-0"

1 1/2" Rivets
Spacing 3'-0"

1 1/2" Rivets
Spacing 3'-0"

1 1/2" Rivets
Spacing 3'-0"

1 1/2" Rivets
Spacing 3'-0"

1 1/2" Rivets
Spacing 3'-0"

1 1/2" Rivets
Spacing 3'-0"

1 1/2" Rivets
Spacing 3'-0"

1 1/2" Rivets
Spacing 3'-0"

Section V-W
Scale 1" = 1'

8-23/4" fitted bolts
split pins 3/4" dia.

The casting to be welded
all around to the rudder-body

To be filled in
flush with cement

1" rivets - 4" dia.
where necessary
1 1/2" rivets - 5" dia.

Frame 1
Scale 1" = 1'

1 1/2" Rivets
Spacing 3'-0"

1 1/2" Rivets
Spacing 3'-0"

1 1/2" Rivets
Spacing 3'-0"

1 1/2" Rivets
Spacing 3'-0"

1 1/2" Rivets
Spacing 3'-0"

1 1/2" Rivets
Spacing 3'-0"

1 1/2" Rivets
Spacing 3'-0"

1 1/2" Rivets
Spacing 3'-0"

1 1/2" Rivets
Spacing 3'-0"

1 1/2" Rivets
Spacing 3'-0"

1 1/2" Rivets
Spacing 3'-0"

1 1/2" Rivets
Spacing 3'-0"

1 1/2" Rivets
Spacing 3'-0"

1 1/2" Rivets
Spacing 3'-0"

1 1/2" Rivets
Spacing 3'-0"

D.S. 248

No. 4.

M/V "GENOTA"

Hamburg Report No. 21508

Revised plan of
Stanhope & Simplex Balance Rudder
Deutsche Werft's No. 156

Hamburg letter 18/1/34

006160-006174-0059



© 2020

Lloyd's Register
Foundation