

7.1.15

PROFILE.

Nº 180 & 1.

DIMENSIONS:- 117'0" B.P. x 22'0" EX. x 13'0" DEPTH MLD.

SCALE 1/4" INCH = ONE FOOT.

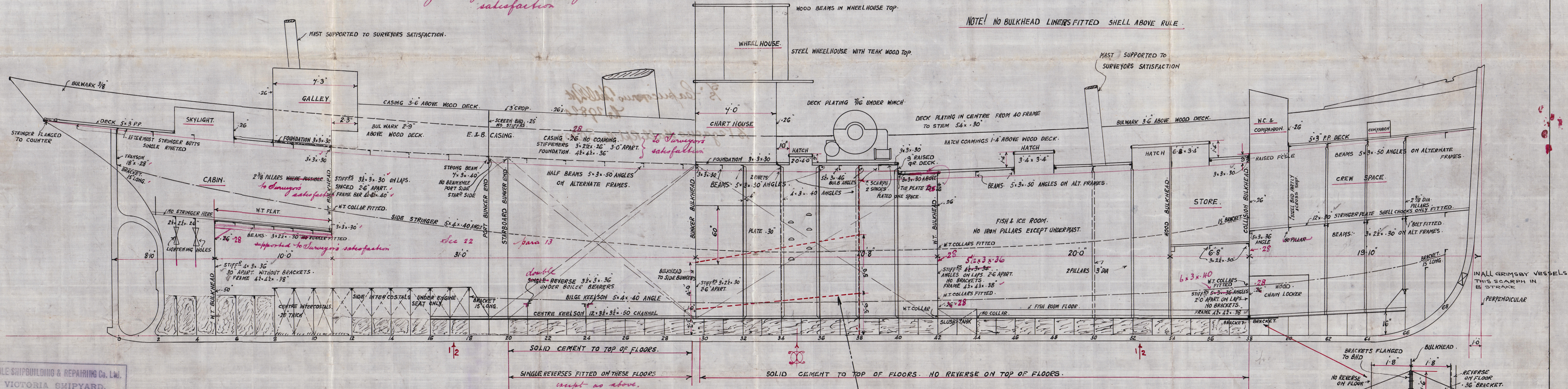
FRAME SPACING 20" THROUGHOUT.

TO CLASS 100A-1. AT LLOYDS. STEAM TRAWLER

Pillaring throughout to Surveyor's satisfaction

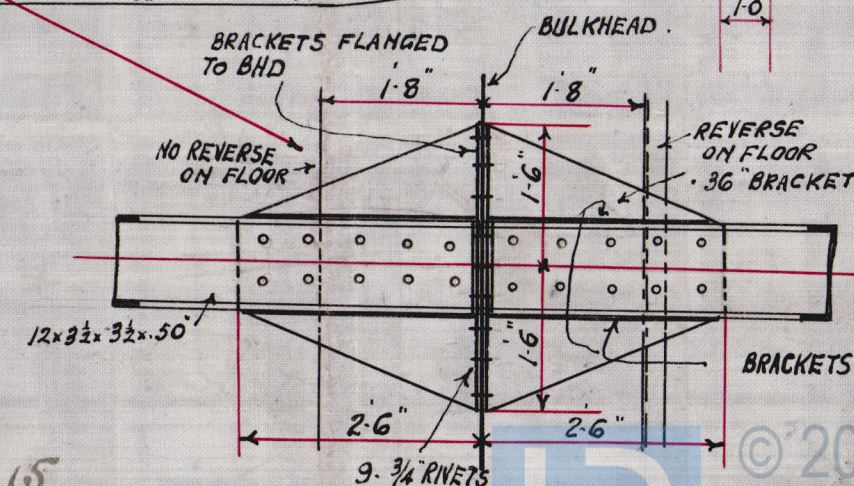
NOTE! 6" FIXED BOARDS UNDER FISH ROOM DIVISIONS.
THOSE BETWEEN PORTABLE WITH RING BOLTS FOR LIFTING.

SKETCH OF GUTTER IN FISH ROOM.
* UNDER STORE FORWARD.
SCALE 1/2" INCH = ONE FOOT.



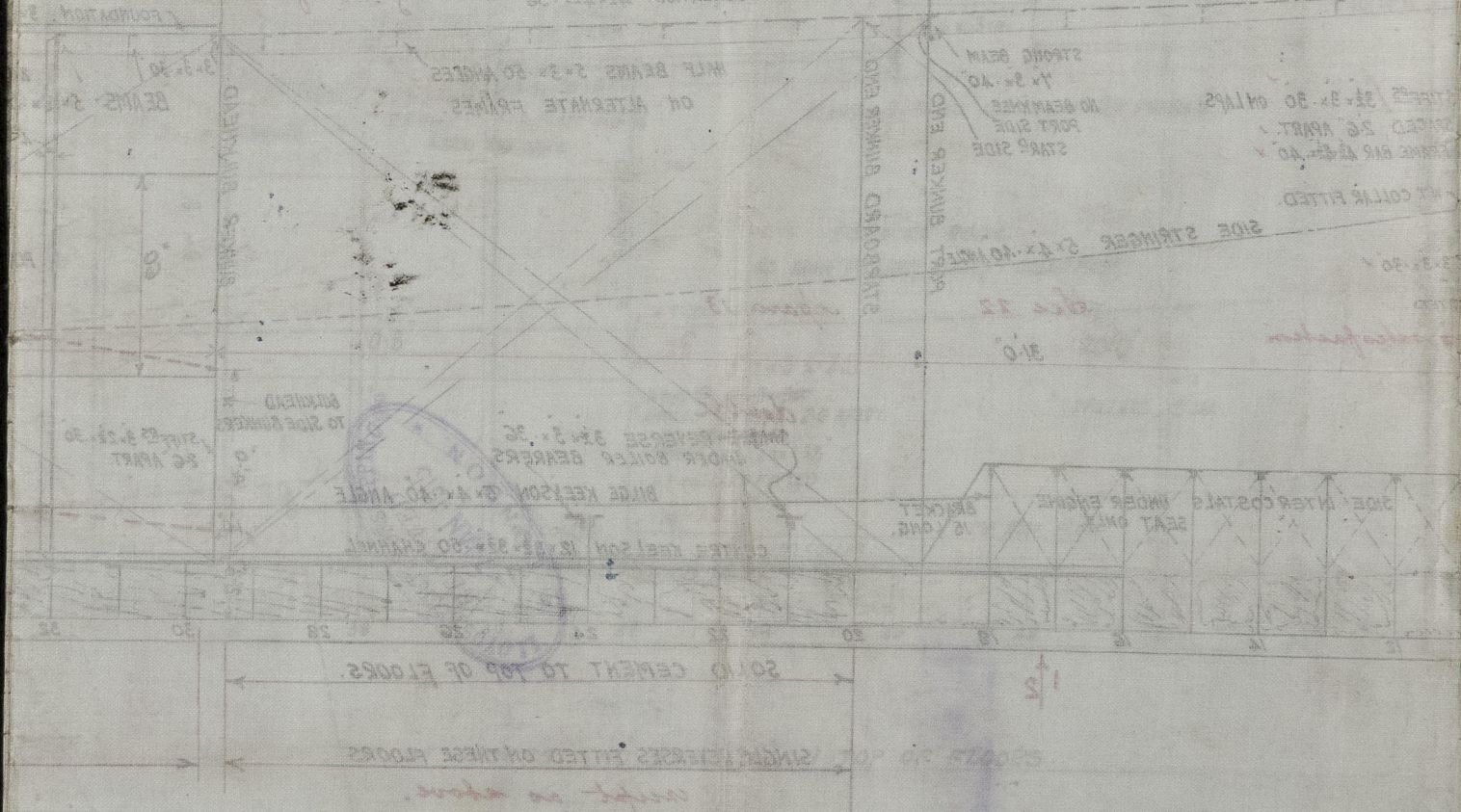
GOOLE SHIPBUILDING & REPAIRING Co. Ltd.
VICTORIA SHIPYARD,
GOOLE.
Drawing No. 615.
Made by Jue. Checked by H.W.
Date 5-1-15.

Nº 181 SHIP:- W.T. BHD CARRIED BACK
TO 38 FRAME, & W.T. TUNNEL FITTED
AS INDICATED BY RED DOTTED LINES.



*3/5 Capricornus Hull Rpt
No. 29820*

3/5 Pegasus Hull Rpt No 30207



No 181 2nd

To 35 ft

As ind

006140-006147-0114



© 2021

Lloyd's Register
Foundation